

LEGEND:

TEMPERATURE

68 DRY BULB TEMPERATURE YEAR ROUND 68± 2°F.

HUMIDITY

60 MAXIMUM 60% RELATIVE HUMIDITY

ROOM PRESSURE

+ / RM. ROOM PRESSURE 0.02" WATER COLUMN POSITIVE TO REFERENCE ROOM INDICATED

AIRFLOW / FILTRATION

8 ISO CLASS 8 (CL 100,000) BASIS OF DESIGN 20 AIR CHANGES PER HOUR.

NOTE:

1. SEE SHEET M-001 FOR LEGEND AND ABBREVIATIONS.

ROOM PRESSURE BALANCE PROCEDURE.

- COORDINATE BALANCING SCHEDULE WITH CONSTRUCTION MANAGER AND/OR OWNER'S REPRESENTATIVE.
- CLOSE ALL DOORS.
- AFTER LAST ROOM HAS BEEN SET, CONFIRM PRESSURE DIFFERENTIAL IN OTHER ROOMS. IF PRESSURE BALANCE IN ANY ROOM DOES NOT SATISFY DESIGN CRITERIA, REPEAT STEPS ABOVE UNTIL ALL ROOMS MEET CRITERIA.
- ALLOW OPERATORS TO OPEN DOORS PER THEIR REQUIREMENTS.

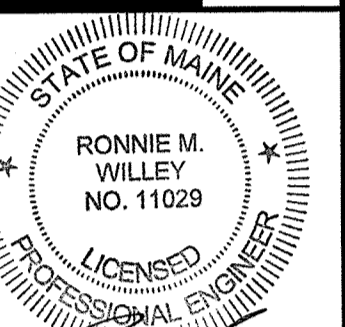
Hodess Construction Corp
100 John L. Dietrich Sq.
No. Attleboro, MA 02783
508-885-1100 (P) 508-885-3101 (F)



ARCHITECTURE
ENGINEERING
PLANNING
INTERIOR DESIGN
COMMISSIONING

SMRI
144 Fore Street
P.O. Box 618
Portland, Maine 04104

tel. (207) 772-3846
fax. (207) 772-1070
www.smriinc.com



PROJECT NORTH



IMMUCELL CORPORATION
CLEANROOM RENOVATION
PORTLAND, ME

ISSUED FOR PERMIT
1-9-14

CURRENT ISSUE STATUS:

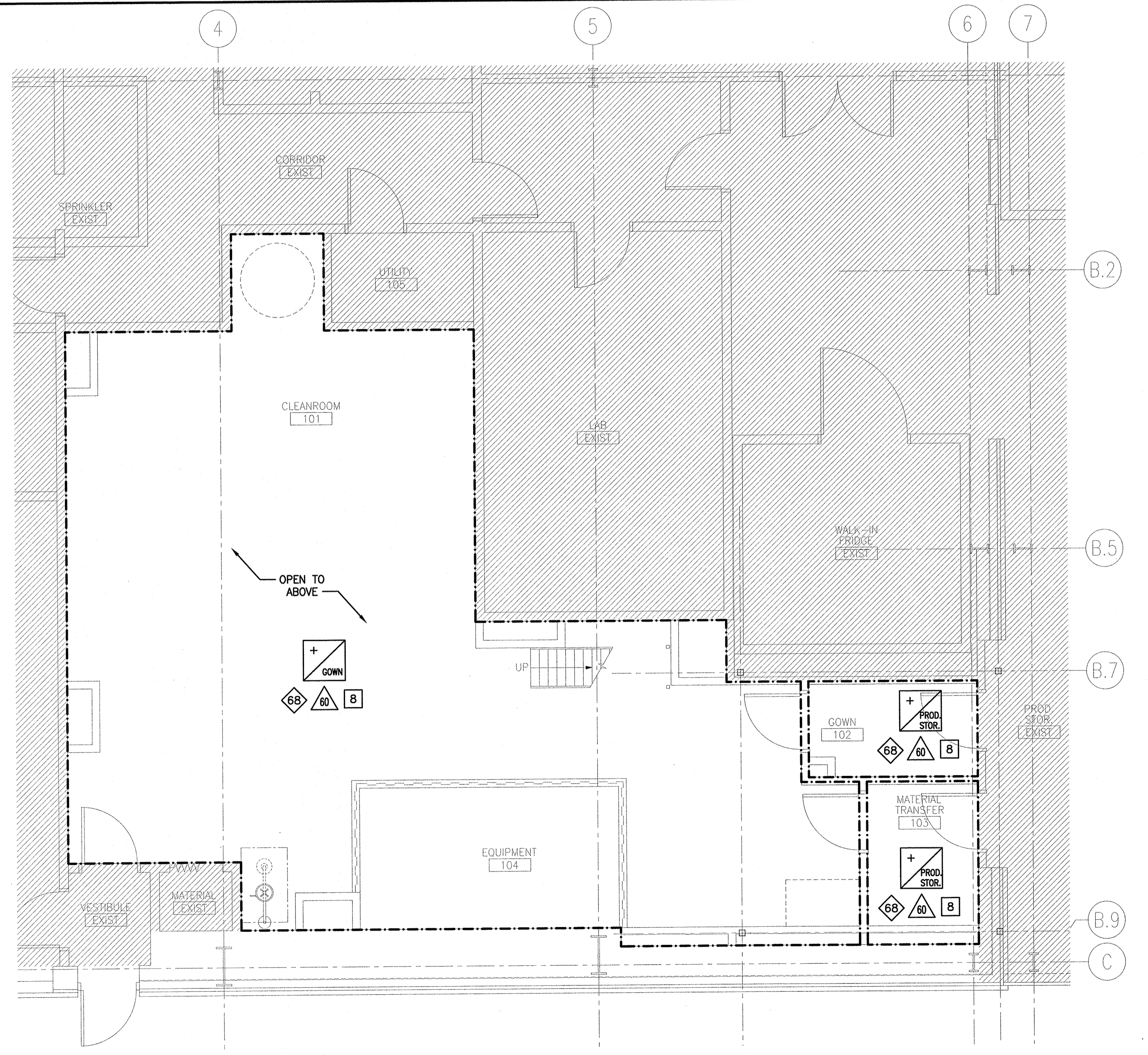
REV	DESCRIPTION	DATE
0	ISSUED FOR PERMIT	1-9-14

GRAPHIC SCALE:
0" 1"

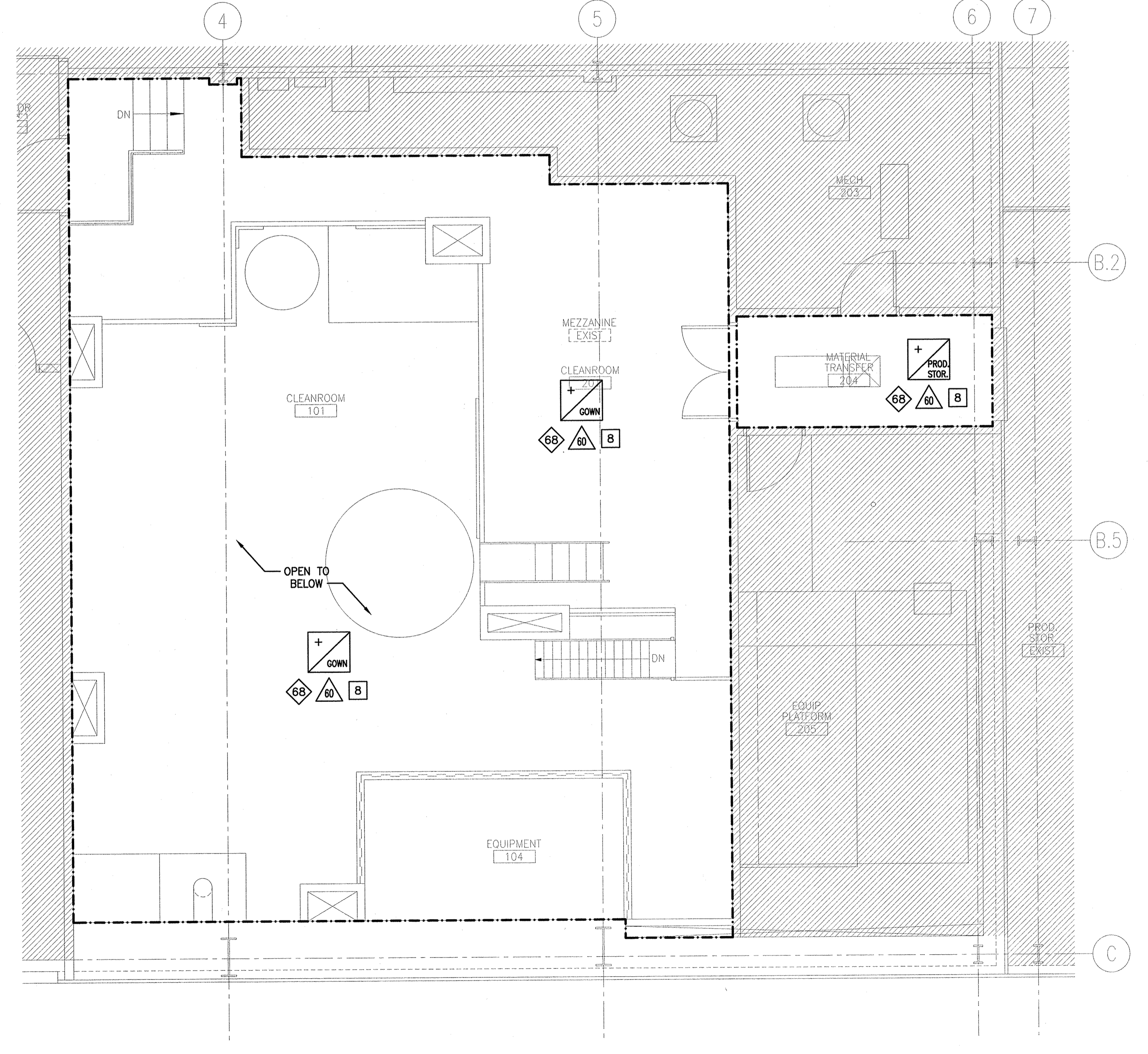
SCALE: 1/4"=1'-0"
PROJECT MANAGER: RAB
JC/DRAWN BY: KPB
A/E OF RECORD: RMW
CAD FILE: 13157-M-004
PROJECT NO: 13157
DATE: 1-9-14

SHEET TITLE:
HVAC ROOM CRITERIA PLANS

SHEET No.
M-004
© COPYRIGHT 2013 SMRI, INC.



A1 FIRST FLOOR HVAC ROOM CRITERIA PLAN
1/4" = 1'-0"



A9 SECOND FLOOR HVAC ROOM CRITERIA PLAN
1/4" = 1'-0"