
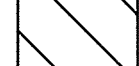



**AREA CLASSIFICATION**

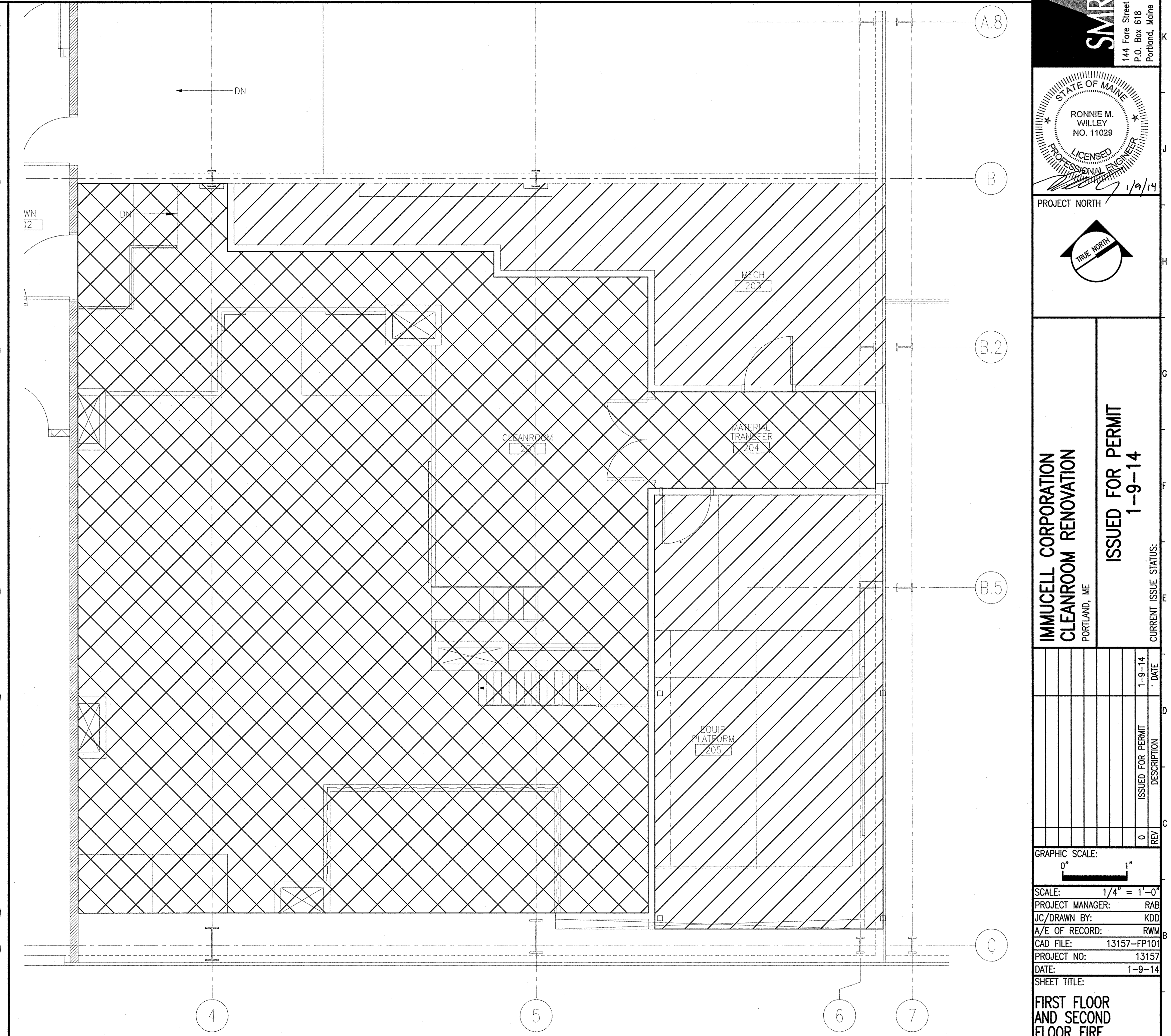
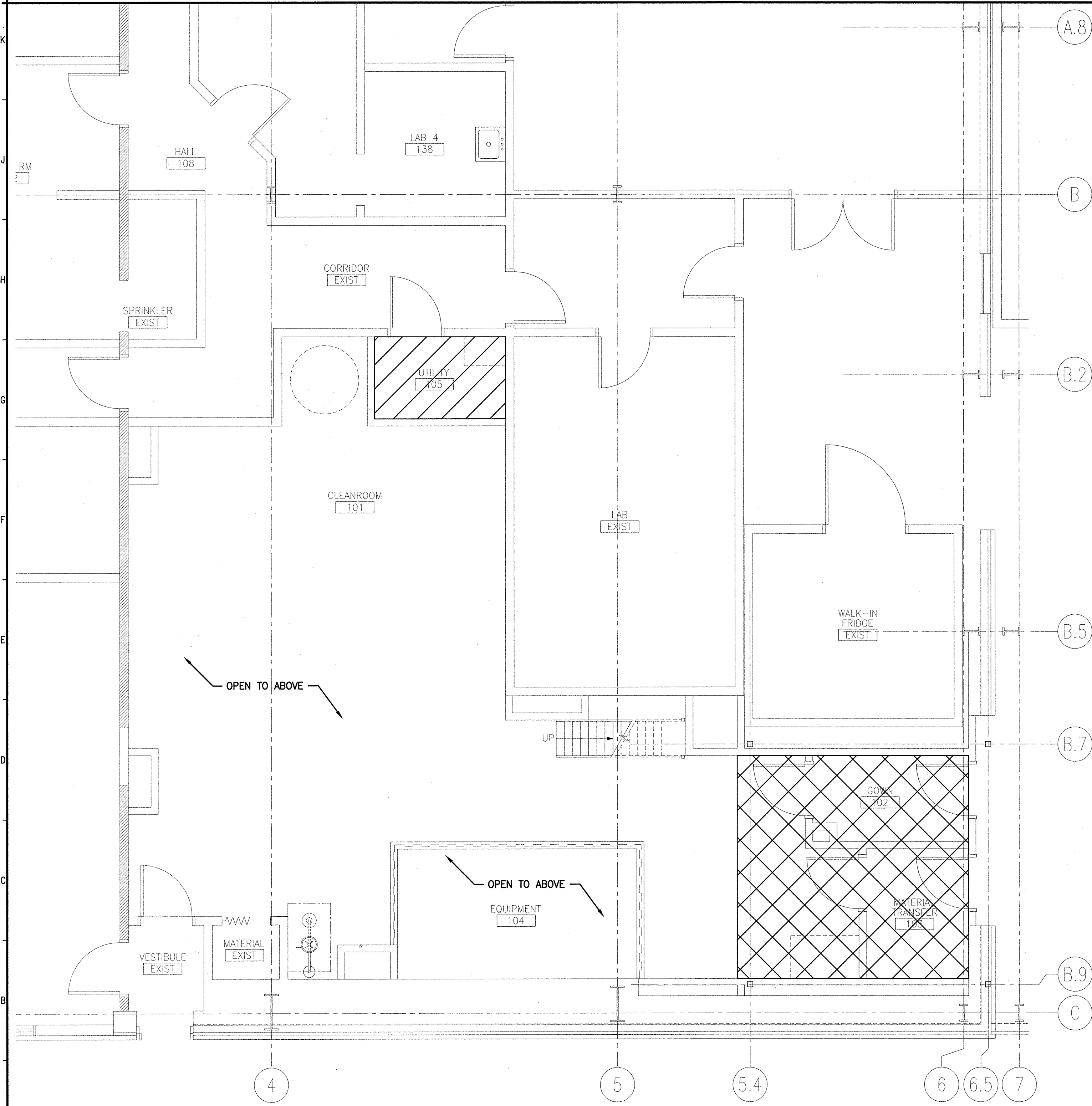
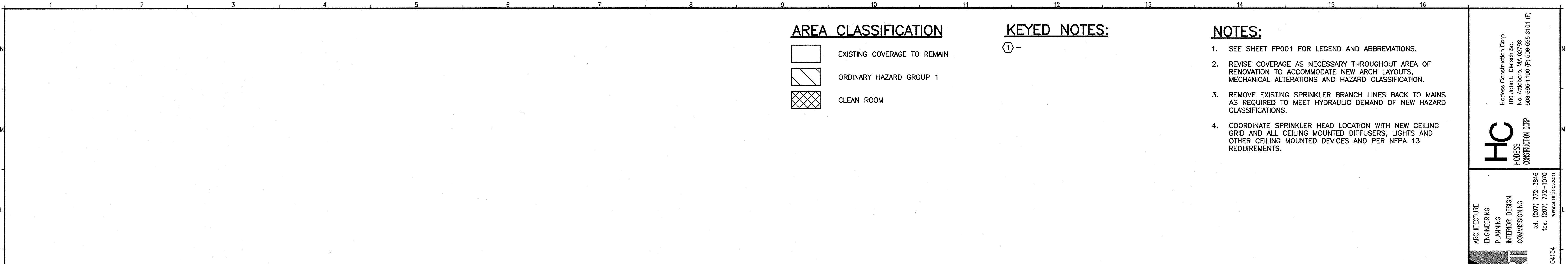
-  EXISTING COVERAGE TO REMAIN
-  ORDINARY HAZARD GROUP 1
-  CLEAN ROOM

**KEYED NOTES:**

① -

**NOTES:**

1. SEE SHEET FP001 FOR LEGEND AND ABBREVIATIONS.
2. REVISE COVERAGE AS NECESSARY THROUGHOUT AREA OF RENOVATION TO ACCOMMODATE NEW ARCH LAYOUTS, MECHANICAL ALTERATIONS AND HAZARD CLASSIFICATION.
3. REMOVE EXISTING SPRINKLER BRANCH LINES BACK TO MAINS AS REQUIRED TO MEET HYDRAULIC DEMAND OF NEW HAZARD CLASSIFICATIONS.
4. COORDINATE SPRINKLER HEAD LOCATION WITH NEW CEILING GRID AND ALL CEILING MOUNTED DIFFUSERS, LIGHTS AND OTHER CEILING MOUNTED DEVICES AND PER NFPA 13 REQUIREMENTS.



**HC**  
HODGES  
CONSTRUCTION CORP

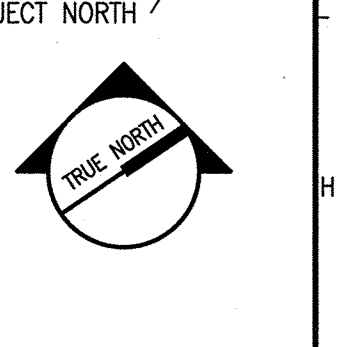
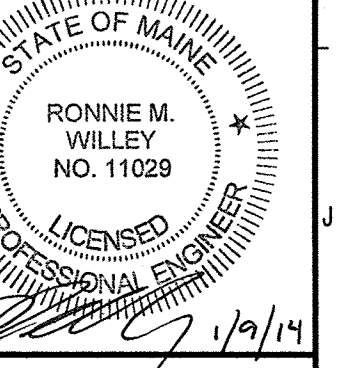
Hodges Construction Corp  
100 John L. Dieck Sq.  
No. Attleboro, MA 02763  
508-695-1100 (P) 508-695-3101 (F)

ARCHITECTURE  
ENGINEERING  
PLANNING  
INTERIOR DESIGN  
COMMISSIONING

tel. (207) 772-3846  
fax. (207) 772-1070  
www.smrinc.com

**SMRT**

144 Fore Street  
P.O. Box 618  
Portland, Maine 04104



**IMMUCELL CORPORATION**  
CLEANROOM RENOVATION  
PORTLAND, ME

**ISSUED FOR PERMIT**  
1-9-14

CURRENT ISSUE STATUS:

REV	DESCRIPTION	DATE
0	ISSUED FOR PERMIT	1-9-14

GRAPHIC SCALE:  
0" 1"

SCALE: 1/4" = 1'-0"

PROJECT MANAGER: RAB  
JC/DRAWN BY: KDS  
A/E OF RECORD: RWM  
CAD FILE: 13157-FP101  
PROJECT NO: 13157  
DATE: 1-9-14

SHEET TITLE:  
**FIRST FLOOR AND SECOND FLOOR FIRE PROTECTION PLANS**

SHEET No.  
**FP101**

© COPYRIGHT 2013 SMRT INC.

**A1** FIRST FLOOR PLAN  
1/4" = 1'-0"

**A9** SECOND FLOOR PLAN  
1/4" = 1'-0"