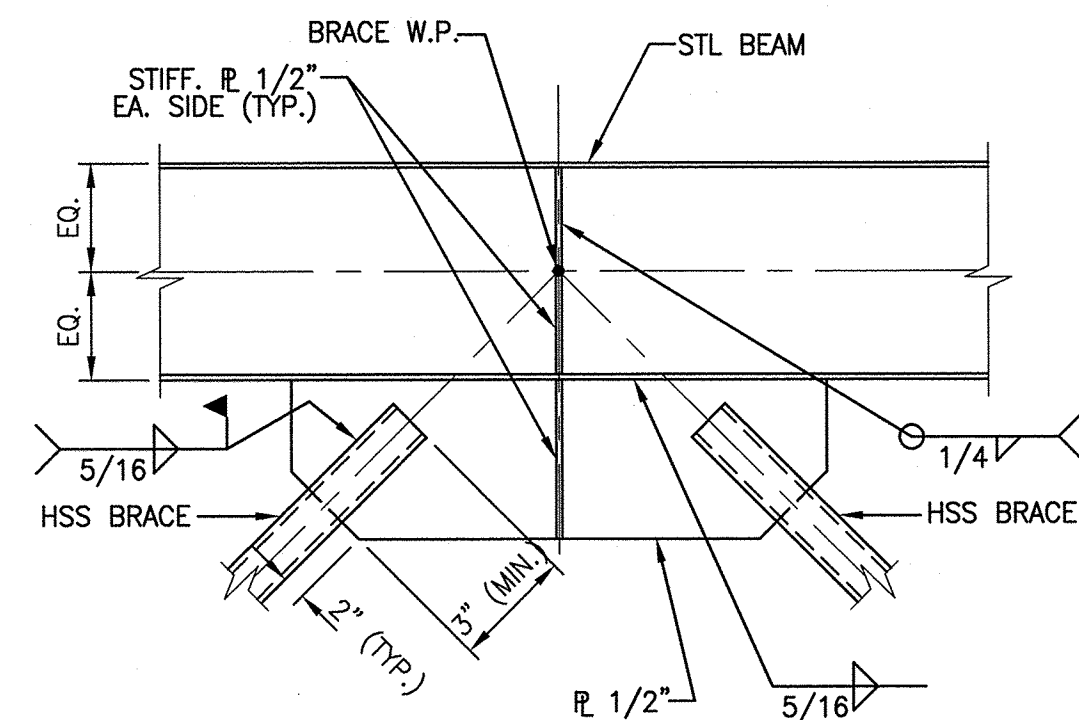


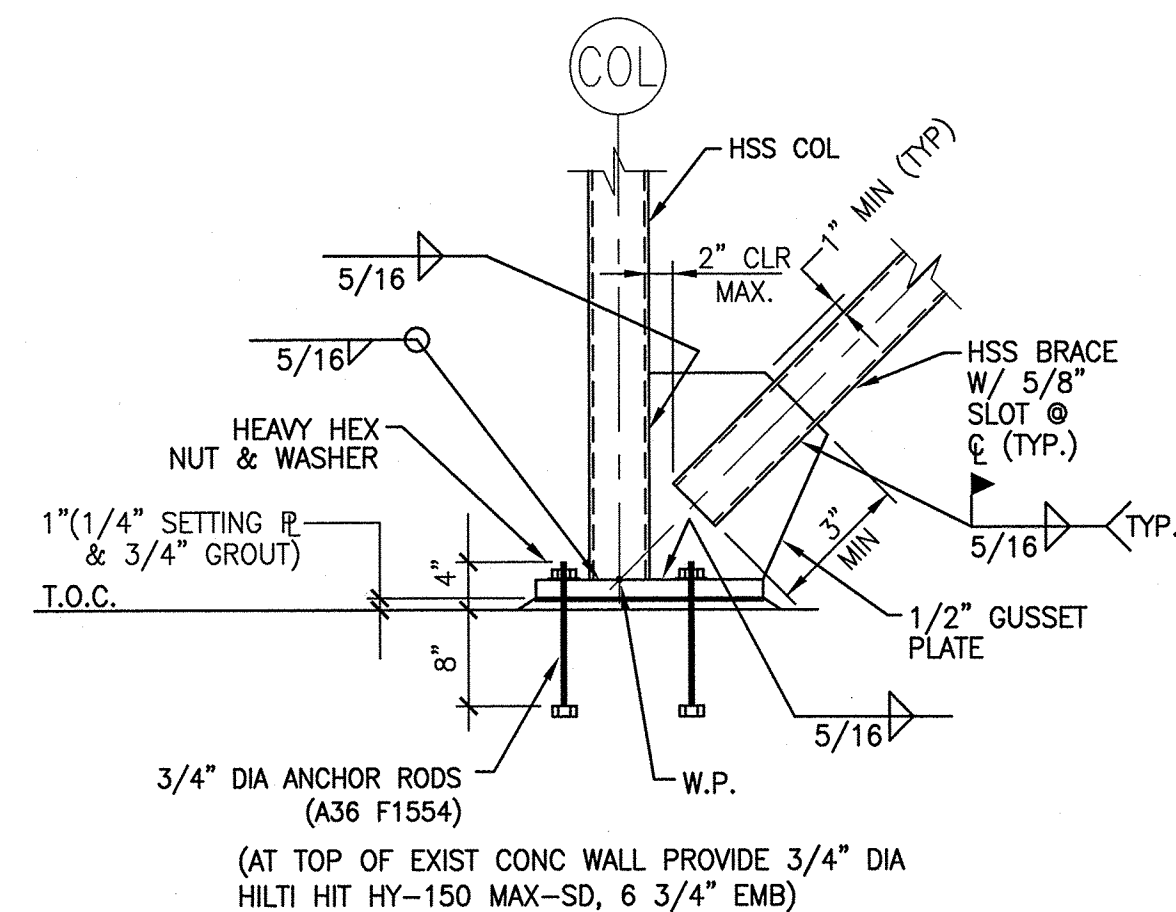
**K1 BRACE DETAIL**

3/4" = 1'-0"



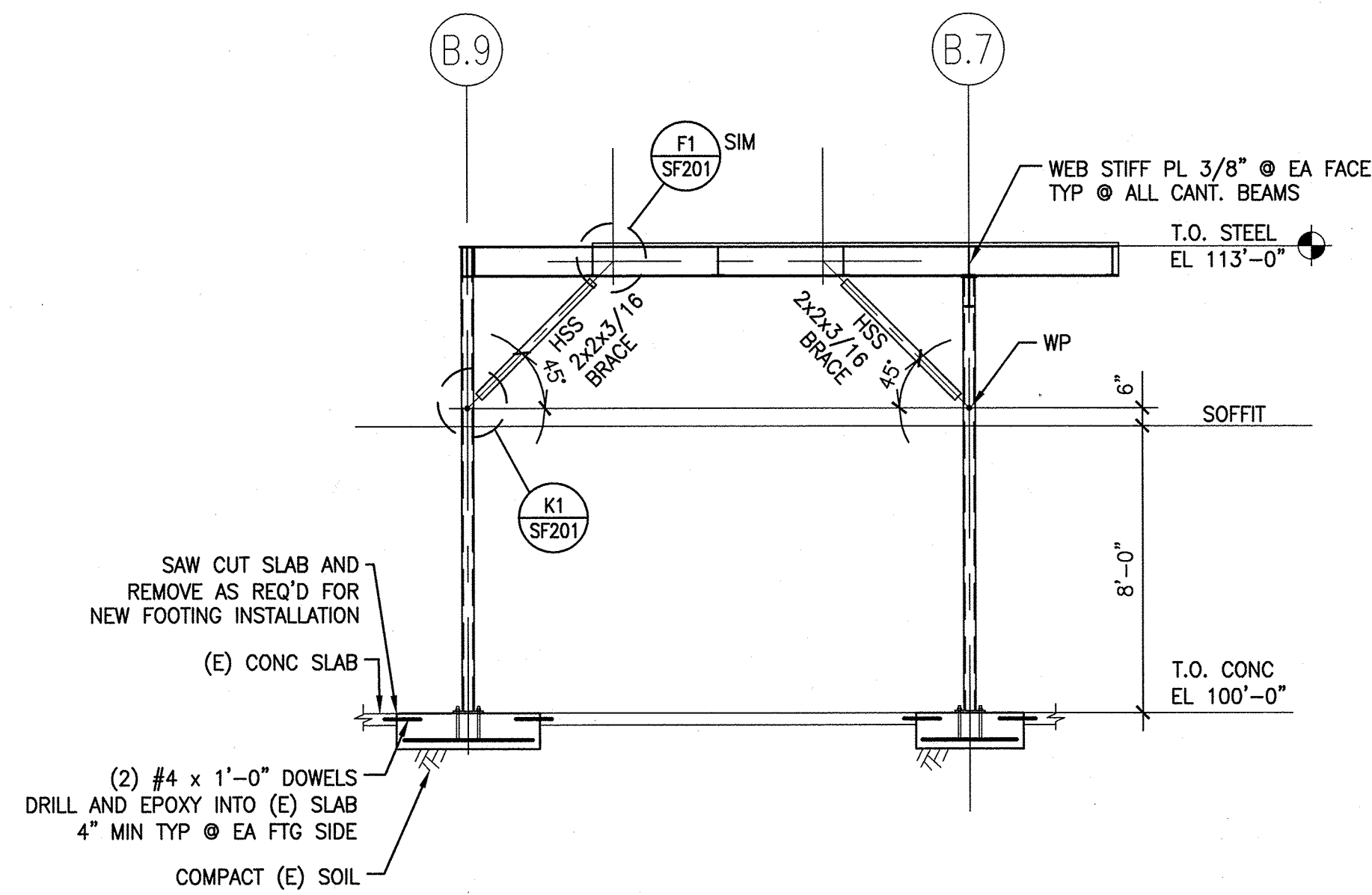
**F1 BRACE DETAIL**

3/4" = 1'-0"



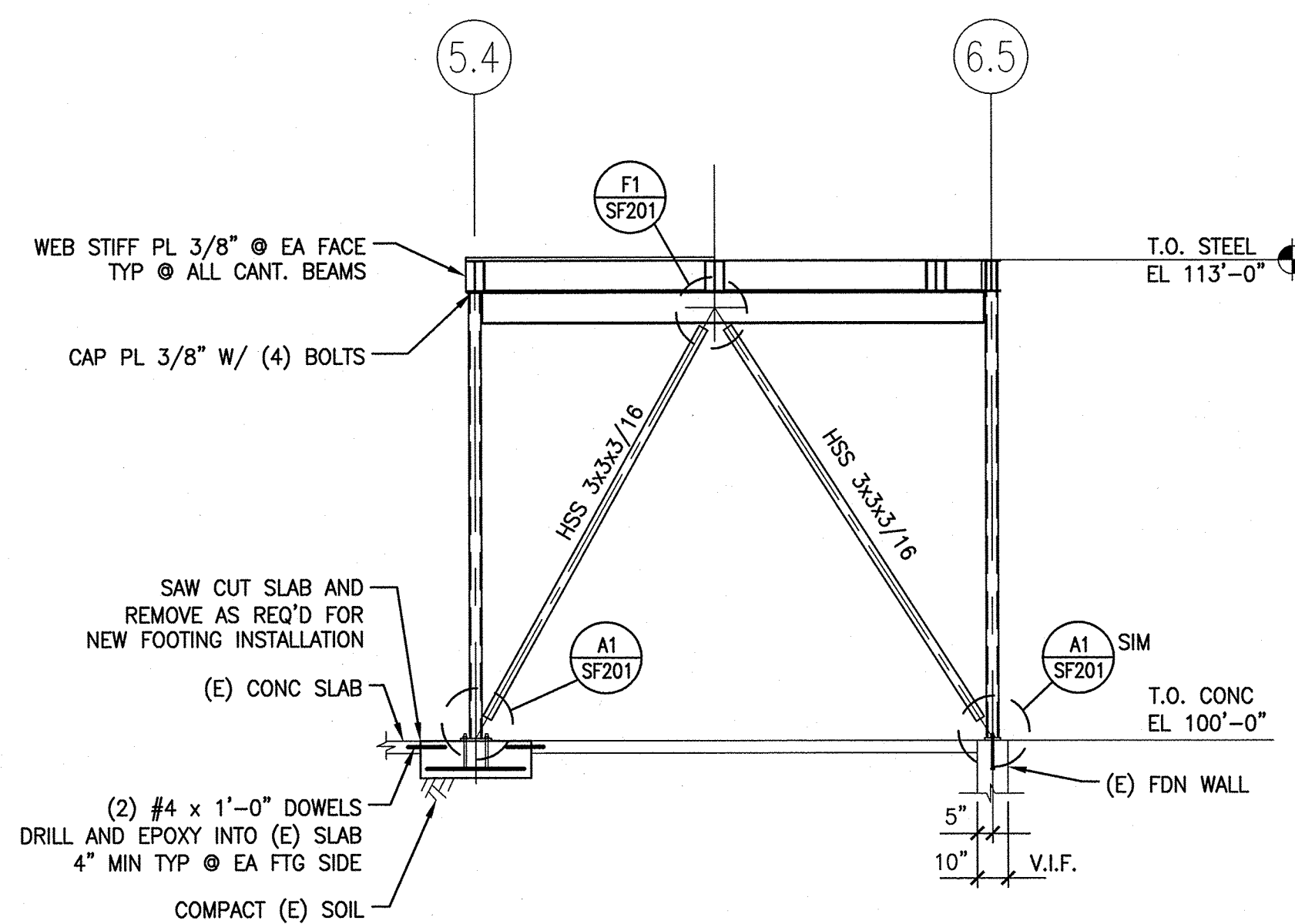
**A1 TYP BRACE DETAIL**

3/4" = 1'-0"



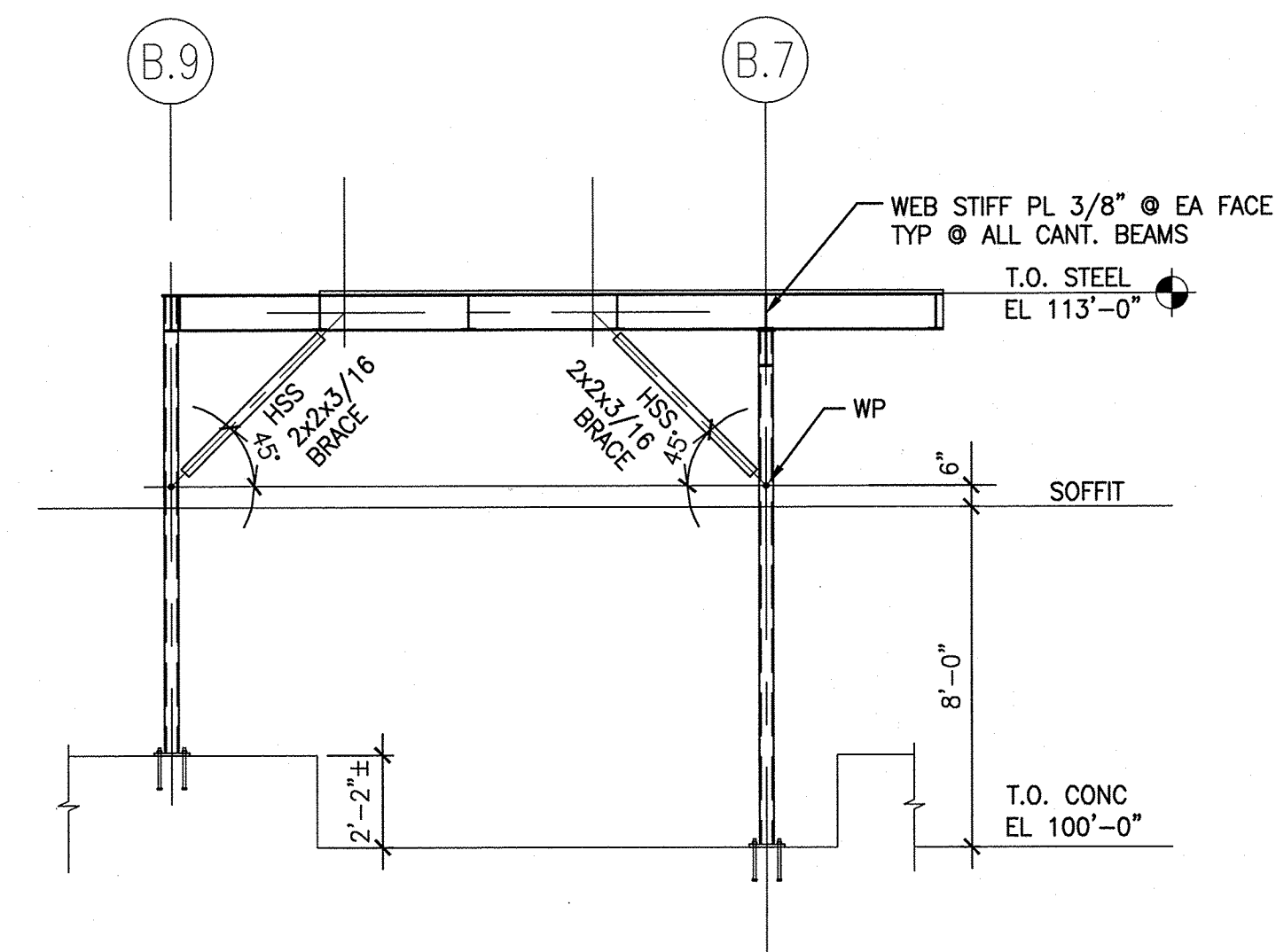
**F6 ELEVATION - LINE 5.4**

1/4" = 1'-0"



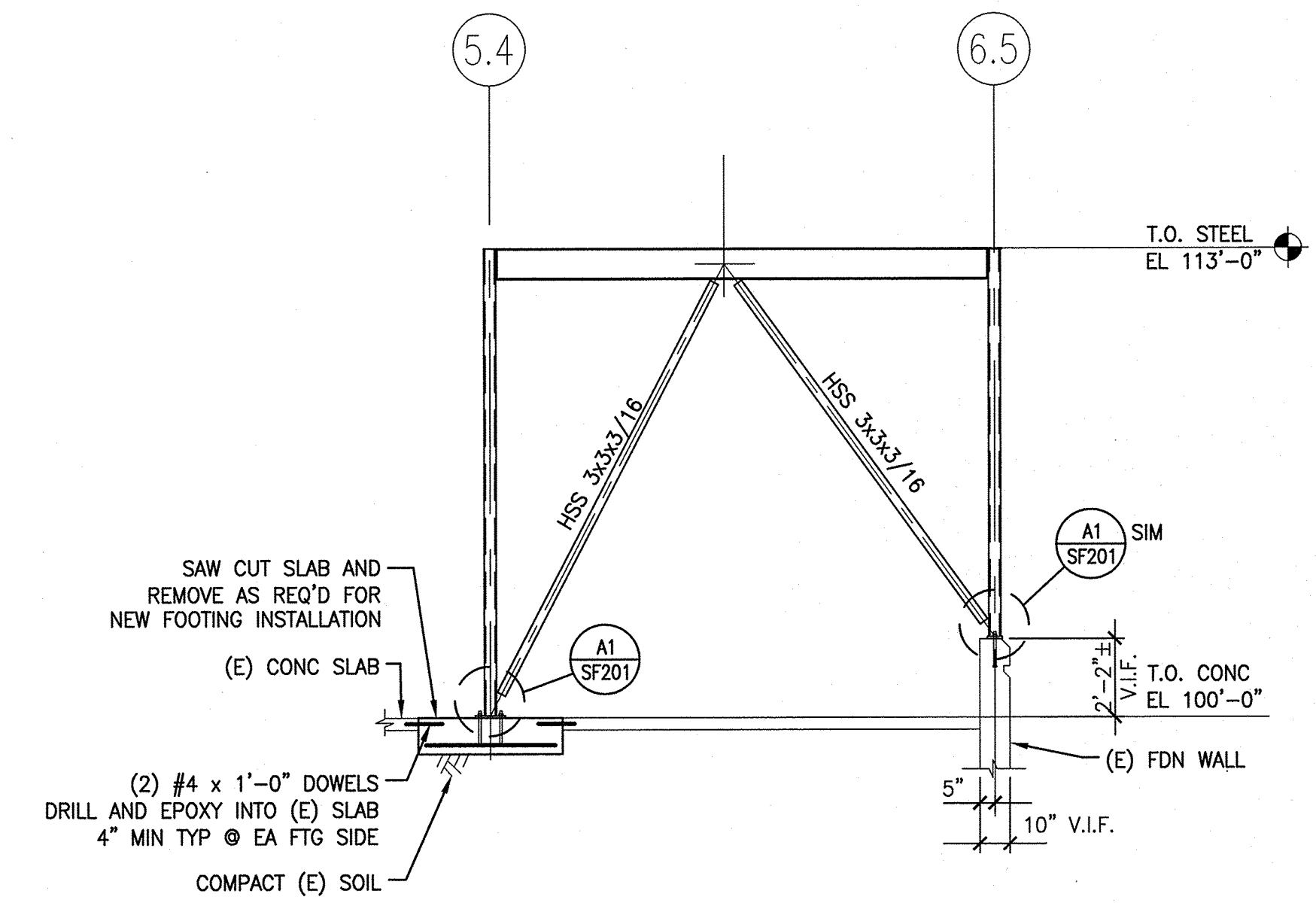
**A6 ELEVATION - LINE B.7**

1/4" = 1'-0"



**F11 ELEVATION - LINE 6.5**

1/4" = 1'-0"

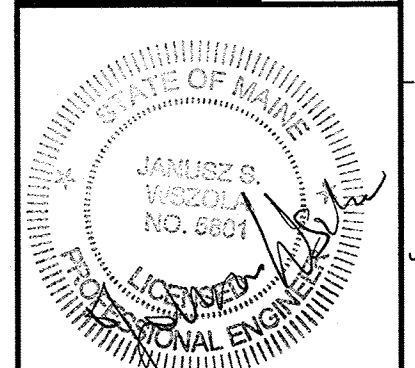


**A11 ELEVATION - LINE B.9**

1/4" = 1'-0"

**HC**  
 Hodess Construction Corp  
 100 John L. Deane St.  
 Portland, ME 04104  
 Tel: (207) 772-3846  
 Fax: (207) 772-1070  
 www.hcinc.com

**SMRI**  
 ARCHITECTURE  
 ENGINEERING  
 PLANNING  
 INTERIOR DESIGN  
 COMMISSIONING  
 144 Fore Street  
 P.O. Box 618  
 Portland, Maine 04104  
 Tel: (207) 772-3846  
 Fax: (207) 772-1070  
 www.smriinc.com



**IMMUCELL CORPORATION**  
 CLEANROOM RENOVATION  
 PORTLAND, ME

**ISSUED FOR PERMIT**  
 1-9-14

CURRENT ISSUE STATUS:  
 1-9-14 DATE

REV	DESCRIPTION	DATE
0	ISSUED FOR PERMIT	1-9-14

GRAPHIC SCALE: 1" = 10'-0"  
 SCALE: AS NOTED  
 PROJECT MANAGER: RAB  
 JC/DRAWN BY: SJF  
 A/E OF RECORD: JSW  
 CAD FILE: 13157-SF201  
 PROJECT NO: 13157  
 DATE: 1-9-14  
 SHEET TITLE: **FRAMING ELEVATIONS**  
 SHEET No. **SF201**  
 © COPYRIGHT 2013 SMRI INC.