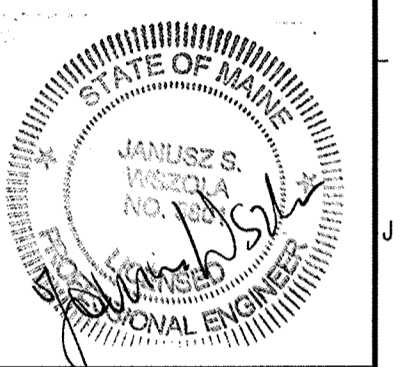


Hodess Construction Corp
100 John L. Diebst Sq.
No. Attleboro, MA 02763
508-895-1100 (P) 508-895-9101 (F)



ARCHITECTURE
ENGINEERING
PLANNING
INTERIOR DESIGN
COMMISSIONING
tel. (207) 772-3846
fax. (207) 772-1070
www.smrtdinc.com



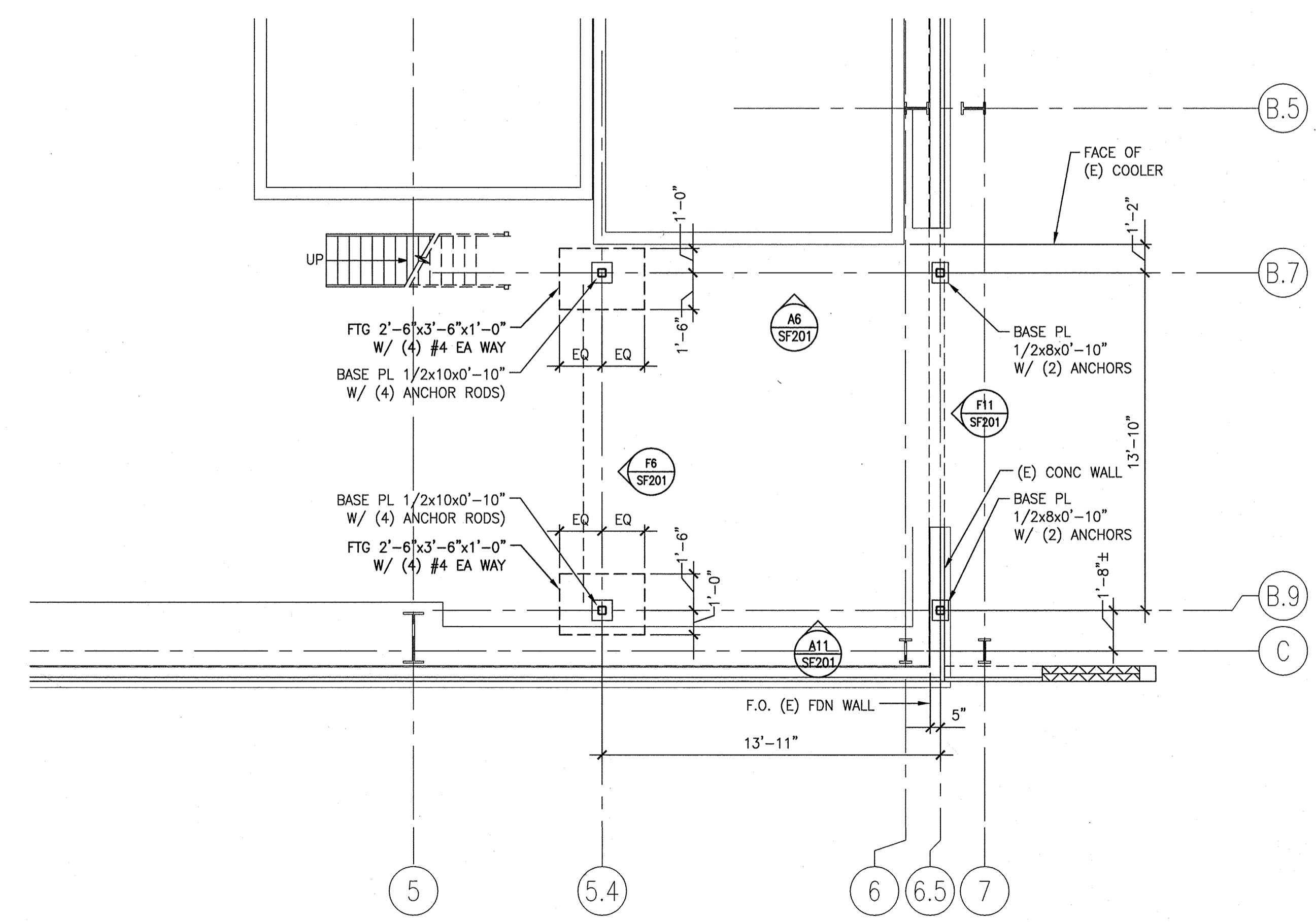
PROJECT NORTH



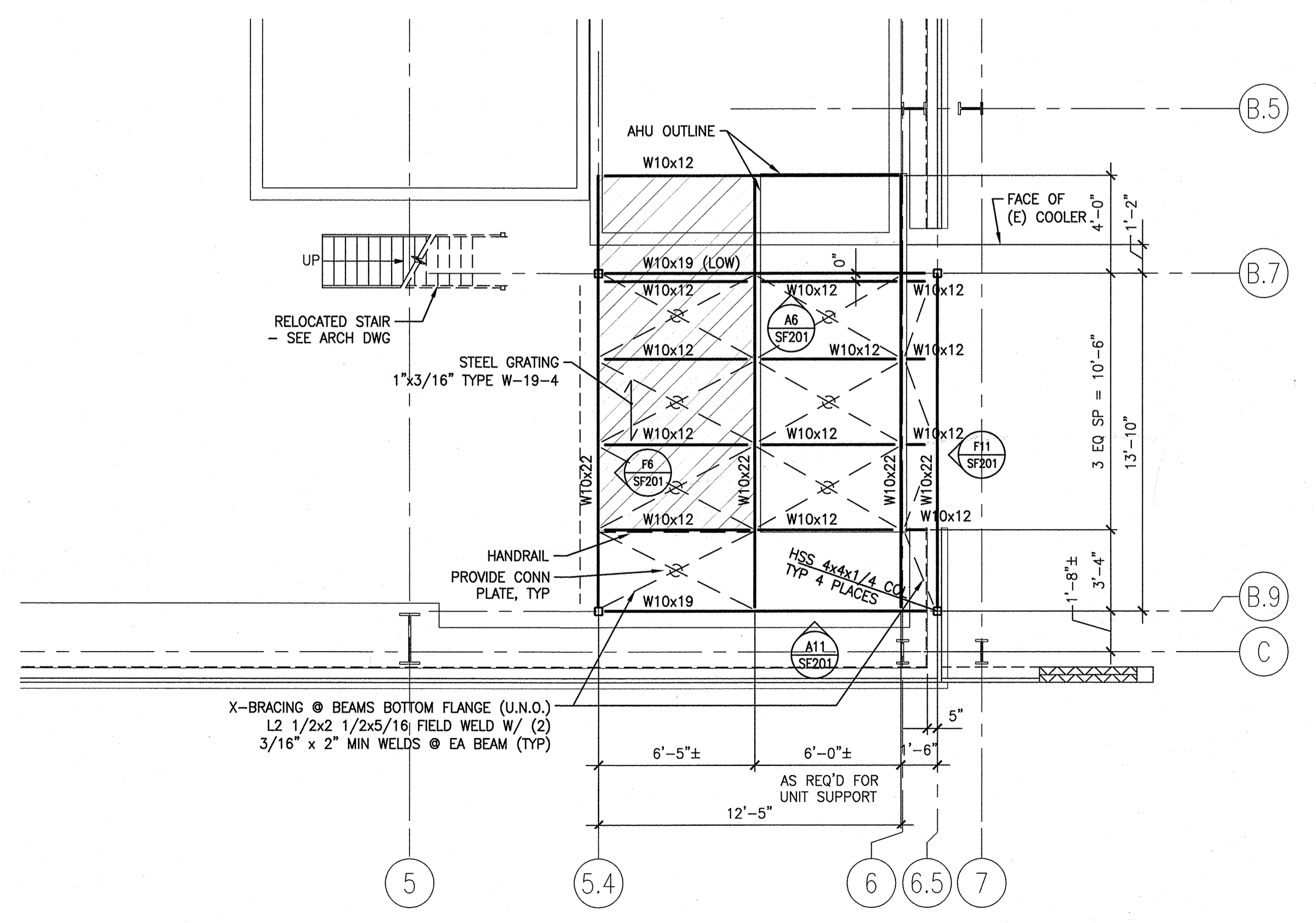
MECHANICAL UNITS SCHEDULE		
UNIT ID	UNIT WEIGHT (LBS)	APPROX UNIT SIZE (WxLxH)
AHU	3900	73"x175"x87"

- STRUCTURAL FRAMING WAS DESIGNED TO SUPPORT THE MECHANICAL UNITS LISTED ABOVE.
- G.C. SHALL COORDINATE SUPPORTING BEAMS LOCATIONS W/ MECHANICAL UNITS APPROVED SUBMITTAL BEFORE CONSTRUCTION.
- FINAL UNIT WEIGHTS, DIMENSIONS, LOCATIONS AND SUPPORT REQUIREMENTS SHALL BE SUBMITTED TO PROJECT STRUCTURAL ENGINEER FOR REVIEW PRIOR TO UNIT INSTALLATION.
- FRAMING MAY NEED TO BE REVISED OR REINFORCED IF UNIT WEIGHTS OR DIMENSIONS ARE CHANGED.

FOUNDATION PLAN NOTES:
1. TOP OF EXIST CONC SLAB ON GRADE EL = 100'-0".



FRAMING PLAN NOTES:
1. TOP OF STEEL ELEVATION = 113'-0".
2. DESIGN LIVE LOAD = 60 PSF (Ø GRATING AREA).



A1 FOUNDATION PLAN

1/4" = 1'-0" *

A9 FRAMING PLAN

1/4" = 1'-0" *

IMMUELL CORPORATION
CLEANROOM RENOVATION
PORTLAND, ME
ISSUED FOR PERMIT
1-9-14

REV	DESCRIPTION	DATE	ISSUE STATUS
0		1-9-14	

GRAPHIC SCALE:
0" 1"
SCALE: AS NOTED
PROJECT MANAGER: RAB
JC/DRAWN BY: SJF
A/E OF RECORD: JSW
CAD FILE: 13157-S-101
PROJECT NO: 13157
DATE: 1-9-14
SHEET TITLE:

FOUNDATION AND FRAMING PLANS AND DETAILS

SHEET No. S-101
© COPYRIGHT 2013 SMRT INC.