

# IMMUCELL CORPORATION CLEANROOM RENOVATIONS

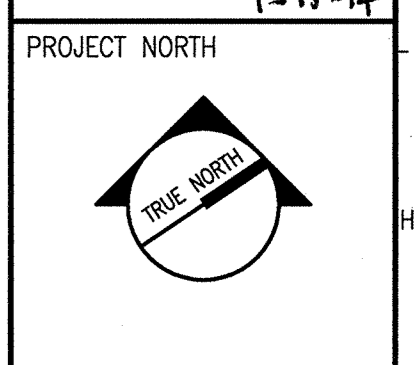
PORTLAND, MAINE

ISSUED FOR PERMIT  
1-9-14

**HC**  
HODESS CONSTRUCTION CORP  
100 John L. Dineen Sq.  
No. Atleboro, MA 02763  
508-695-1100 (P) 508-695-3101 (F)

**SMRT**  
ARCHITECTURE  
ENGINEERING  
PLANNING  
INTERIOR DESIGN  
COMMISSIONING  
144 Fore Street  
P.O. Box 618  
Portland, Maine 04104  
tel. (207) 772-3846  
fax. (207) 772-1070  
www.smrtinc.com

**DAVID A. MAINS**  
No. 3355  
1-15-14  
PROJECT NORTH

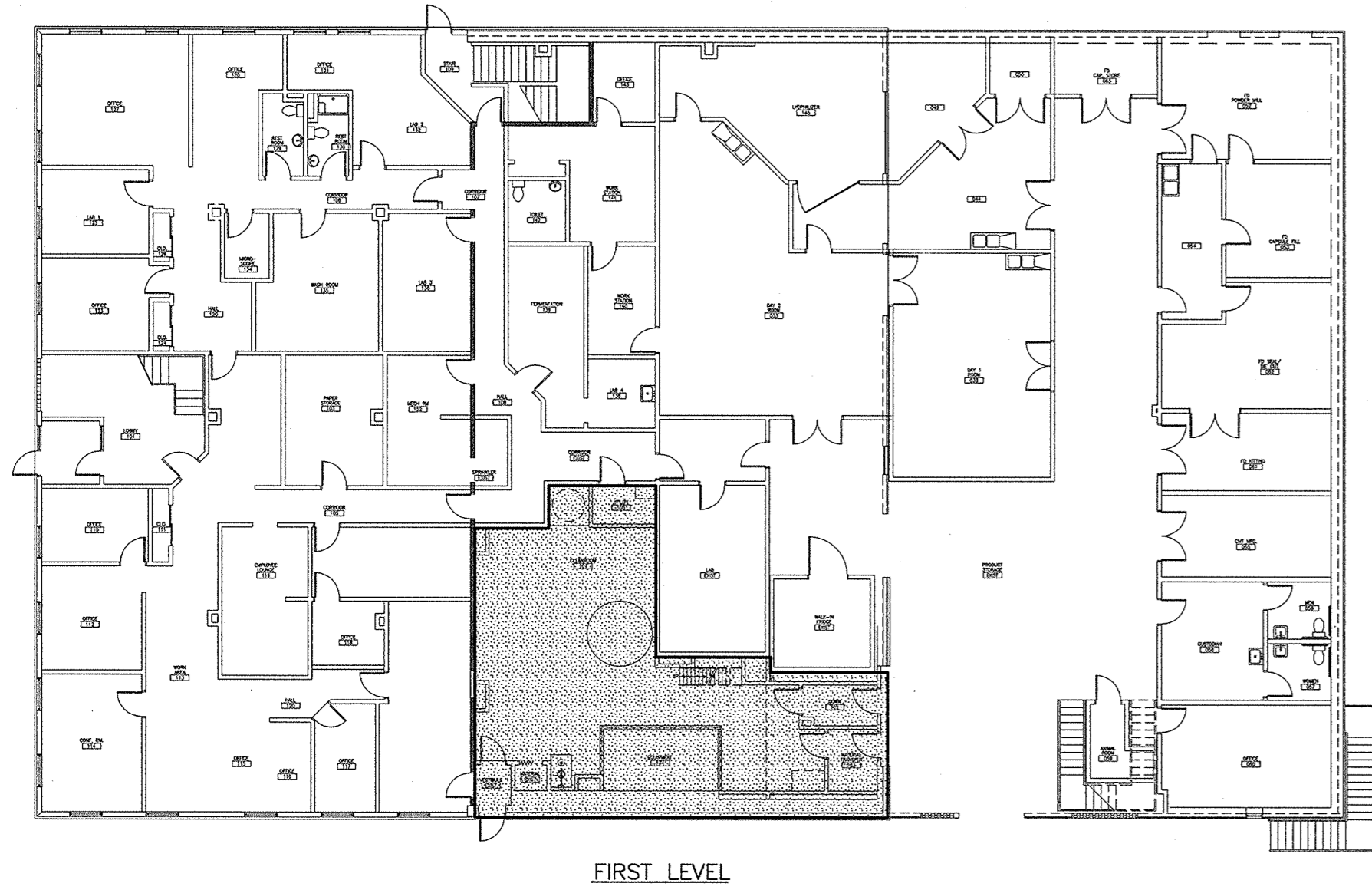
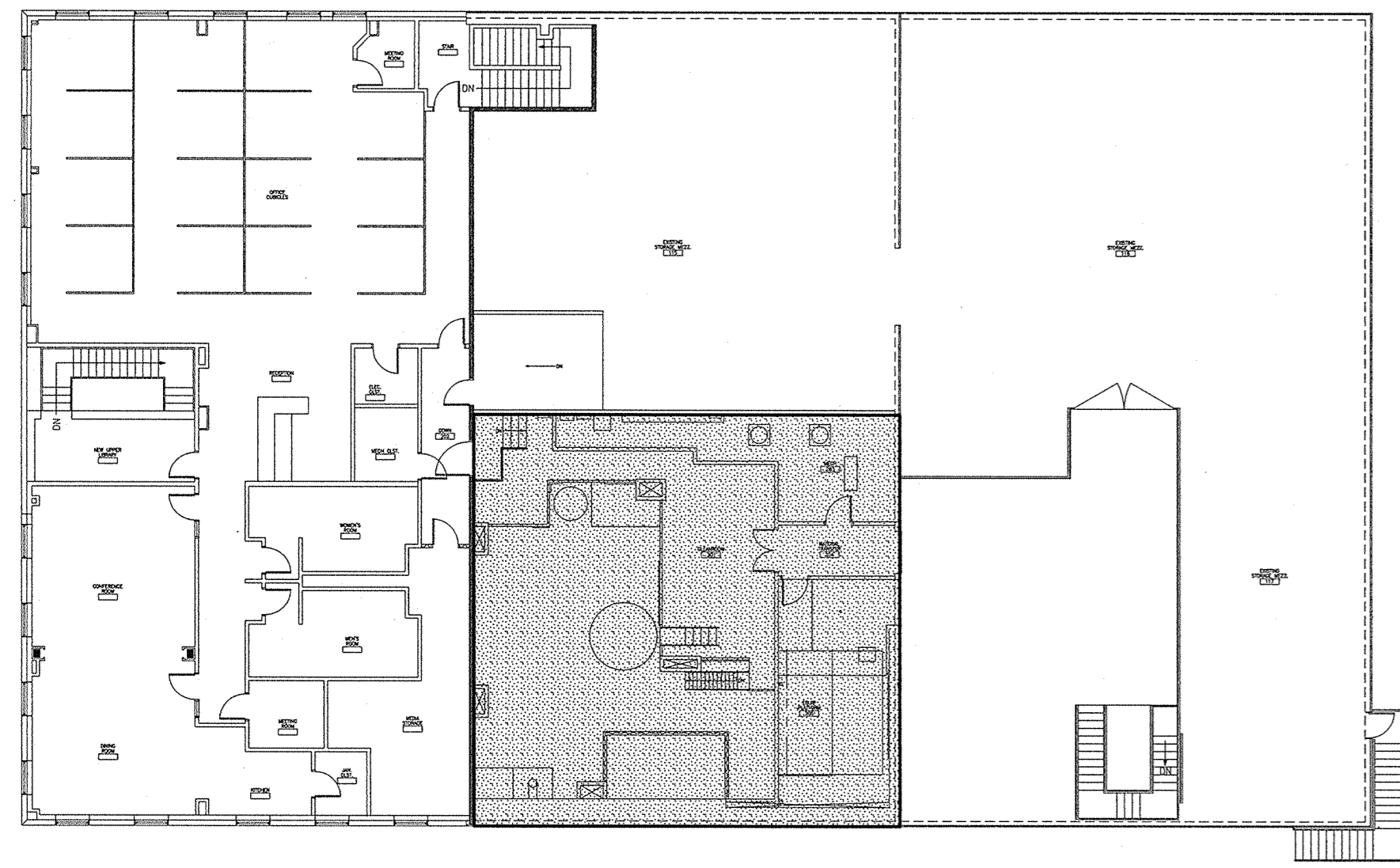


**IMMUCELL CORPORATION**  
CLEANROOM RENOVATION  
PORTLAND, ME  
ISSUED FOR PERMIT  
1-9-14  
CURRENT ISSUE STATUS

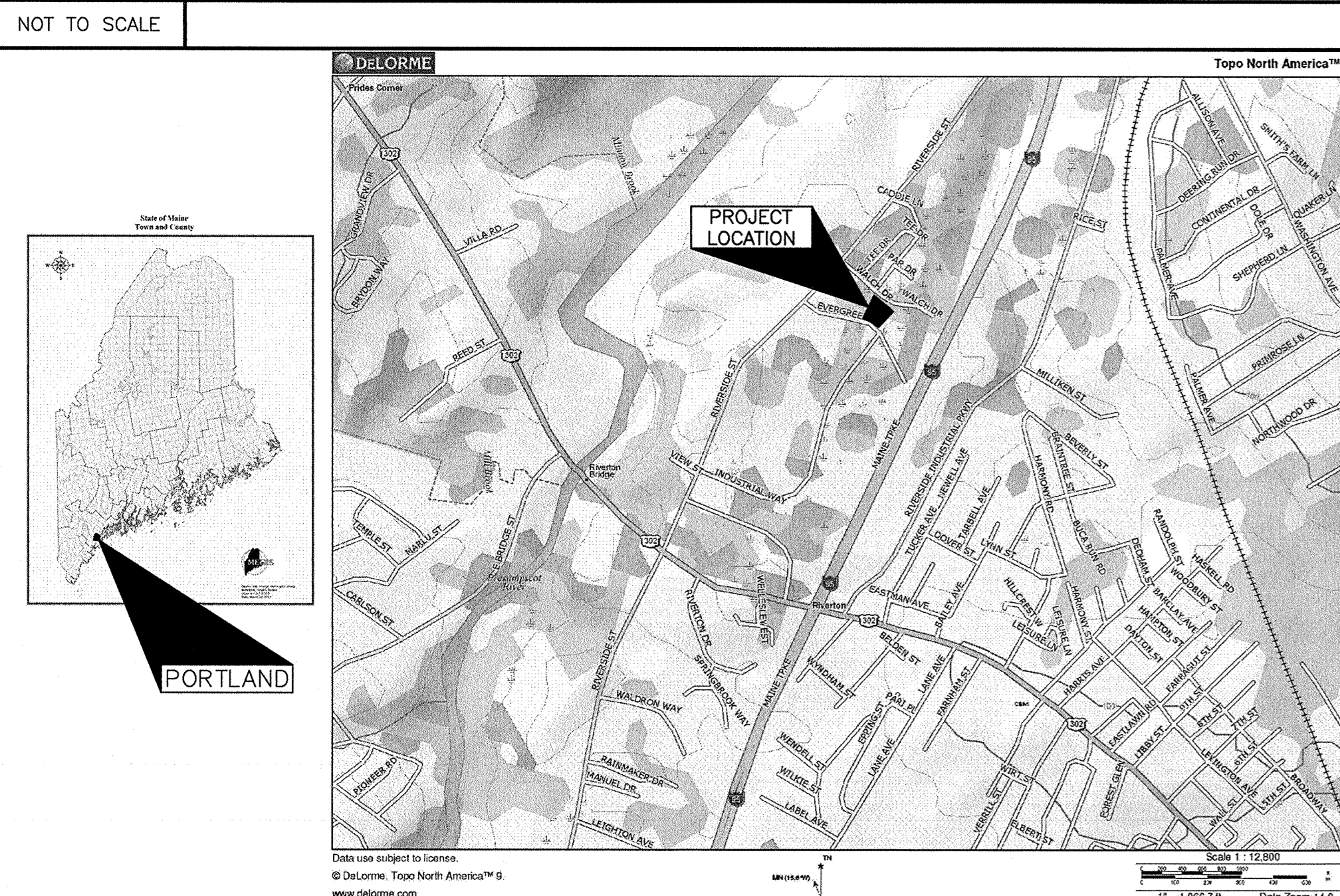
REV	DATE	DESCRIPTION
0	1-9-14	ISSUED FOR PERMIT

GRAPHIC SCALE:  
0" 1"

SCALE: NONE  
PROJECT MANAGER: RAB  
JC/DRAWN BY: BAL  
A/E OF RECORD: RMW  
CAD FILE: 13157-G1001  
PROJECT NO: 13157  
DATE: 1-9-14  
SHEET TITLE:  
**COVER SHEET**



**E1 KEY PLANS**



**A1 LOCATION MAP**

NOT TO SCALE

NOTES:  
1. ALL QUANTITIES ARE OWNER SUPPLIED  
2. THRESHOLD LIMITS INCLUDE INCREASE ALLOWED FOR A FULLY SPRINKLERED BUILDING AND RATED STORAGE AS APPLICABLE.

**PHYSICAL HAZARDS**

MATERIAL	CORROSIVE LIQUIDS (GALS)	FLAMMABLE LIQUIDS (GALS)
IN USE - CLOSED SYSTEM	-	-
IN USE - OPEN SYSTEM	165	55
STORAGE	0	0
TOTAL IN PROJECT	165	55
THRESHOLD - STORAGE	2000	480
THRESHOLD - CLOSED SYSTEM	1000	240
THRESHOLD - OPEN SYSTEM	200	60
RESULT	OK	OK
USE GROUP OVER MAQ	-	-

ACT ACoustic CEILING TILE  
CONC EXISTING CONCRETE FLOOR SLAB  
EXIST EXISTING  
FLR FLOOR  
GWB GYPSUM WALLBOARD  
HM HOLLOW METAL  
PT PAINT  
RB RESILIENT BASE  
RCP REFLECTED CEILING PLAN  
RE REFERRED  
VCT VINYL COMPOSITION TILE  
W/WITH  
WD WOOD

**GENERAL**

G1001 COVER SHEET

**ARCHITECTURAL**

AE001 ARCHITECTURAL INFORMATION  
AE101 FIRST FLOOR DEMOLITION AND PROPOSED PLANS  
AE102 SECOND FLOOR DEMOLITION AND PROPOSED PLANS  
AE103 CAP LAYOUT AND REFLECTED CEILING PLANS  
AE301 BUILDING SECTIONS

**STRUCTURAL**

SG001 STRUCTURAL GENERAL NOTES  
S-101 FOUNDATION AND FRAMING PLANS AND DETAILS  
SF201 FRAMING ELEVATIONS

**FIRE PROTECTION**

FP001 LEGEND AND ABBREVIATIONS  
FP101 FIRST FLOOR AND SECOND FLOOR FIRE PROTECTION PLANS

**MECHANICAL**

M-001 HVAC LEGEND AND ABBREVIATIONS  
M-002 HVAC SPECIFICATIONS  
M-003 HVAC SPECIFICATIONS  
M-004 HVAC ROOM CRITERIA PLANS  
MD101 SECOND FLOOR HVAC DEMOLITION PLAN  
MH101 FIRST FLOOR HVAC PLAN  
MH102 SECOND FLOOR HVAC PLAN  
MH103 HVAC PLAN (ABOVE CAP)  
M-501 HVAC DETAILS  
M-601 HVAC SCHEDULES  
M-651 HVAC SCHEMATICS  
M-652 HVAC SEQUENCE OF OPERATIONS

**ELECTRICAL**

E-001 LEGEND AND GENERAL NOTES  
E-002 ELECTRICAL SPECIFICATIONS SHEET 1  
E-003 ELECTRICAL SPECIFICATIONS SHEET 2  
ED101 FIRST AND SECOND FLOOR DEMOLITION PLANS  
EP101 FIRST AND SECOND FLOOR POWER PLANS  
EL101 FIRST AND SECOND FLOOR LIGHTING PLANS  
E-601 SCHEDULES AND DETAILS

**G9 CHEMICAL QUANTITIES**

NOT TO SCALE

**G11 ABBREVIATIONS**

NOT TO SCALE

Building Owner: Immucell Corporation.

APPLICABLE CODES  
Maine Uniform Building Code  
2009 International Building Code  
2009 International Energy Conservation Code  
2009 International Mechanical Code  
2009 Maine Internal Plumbing Code  
2011 National Electric Code

CONSTRUCTION TYPE  
II-B Fully Sprinklered, Non-Combustible, Unprotected

USE GROUP CLASSIFICATIONS

F1 - INDUSTRIAL Moderate Hazard  
B - BUSINESS Moderate Hazard

PROJECT DESCRIPTION  
This project is a renovation of existing space to create a clean room environment for mixing and dispensing of pharmaceutical compounds.

Occupancy Load and egress requirements of the existing facility are not effected by the proposed renovation.

HAZARDOUS CHEMICAL INVENTORY  
Hazardous Production Material (HPM) quantities are listed in the Chemical Quantity table. Quantities are as provided by the Owner. Use and storage maximum allowable quantities are not exceeded.

FIRE RESISTANCE RATINGS OF STRUCTURAL ELEMENTS TABLE 601

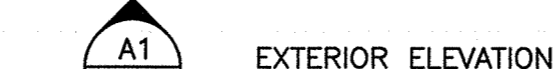
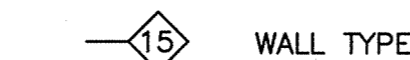
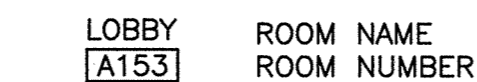
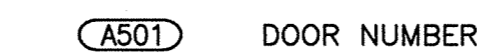
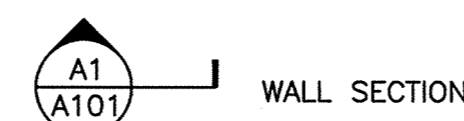
Type II-B Construction : 0 Hours

EXISTING BUILDING AREAS  
Total Building Area 25,125 sf

Building Area of Project  
F1 Industrial 2800 sf

- FIELD VERIFY ALL DIMENSIONS AND LAYOUT PRIOR TO PROCEEDING WITH WORK. NOTIFY ARCHITECT IN WRITING OF ANY DISCREPANCIES OR INCONSISTENCIES. FAILURE TO REPORT ANY DISCREPANCIES WITHIN THESE CONSTRUCTION DOCUMENTS TO THE ARCHITECT WILL NOT BE GROUNDS FOR ADDITIONAL COST OR CHANGE ORDERS.
- CONTRACTOR SHALL BE RESPONSIBLE FOR PROVIDING ALL MATERIALS (UNLESS NOTED OTHERWISE), AND WORKMANSHIP IN ACCORDANCE WITH FEDERAL, STATE, CITY AND LOCAL BUILDING CODES AND THEIR REQUIREMENTS.
- CONTRACTOR AND ALL TRADES SHALL NOTE REQUIREMENTS OF "GENERAL NOTES" ON ALL SHEETS.
- REFER TO ALL CONSTRUCTION DOCUMENTS FOR REQUIREMENTS WHICH MAY AFFECT THE WORK IN ANOTHER DISCIPLINE AND COORDINATE WORK.
- REFER TO DETAILS & ENLARGED PLANS FOR ADDITIONAL DIMENSIONAL INFORMATION.
- DO NOT SCALE DRAWINGS.
- "PROVIDE" MEANS "FURNISH AND INSTALL".
- COORDINATE THE EXTENT OF ALL REMOVALS W/ NEW FINISHES & FINISHES TO REMAIN. PATCH & REPAIR ALL DAMAGE TO EXISTING FINISHES TO REMAIN TO MATCH THE ADJACENT FINISH. EXTEND THE PATCH & REPAIR CONTINUOUSLY TO THE NEAREST CORNER UNLESS NOTED OTHERWISE. PREPARE FINISH SUBSTRATES FOR APPLICATION OF FINISHES IN ACCORDANCE W/ THE FINISH MANUFACTURER'S WRITTEN RECOMMENDATIONS.

GRID LOCATION	TITLE
SCALE	REFERENCE SHEET
	DRAWING TITLE BLOCK



**A6 SYMBOLS LEGEND**

NOT TO SCALE

**A9 CODE ANALYSIS**

NOT TO SCALE

**A11 GENERAL NOTES**

NOT TO SCALE

**A14 DRAWING LIST**

NOT TO SCALE

SHEET No.  
**G1001**