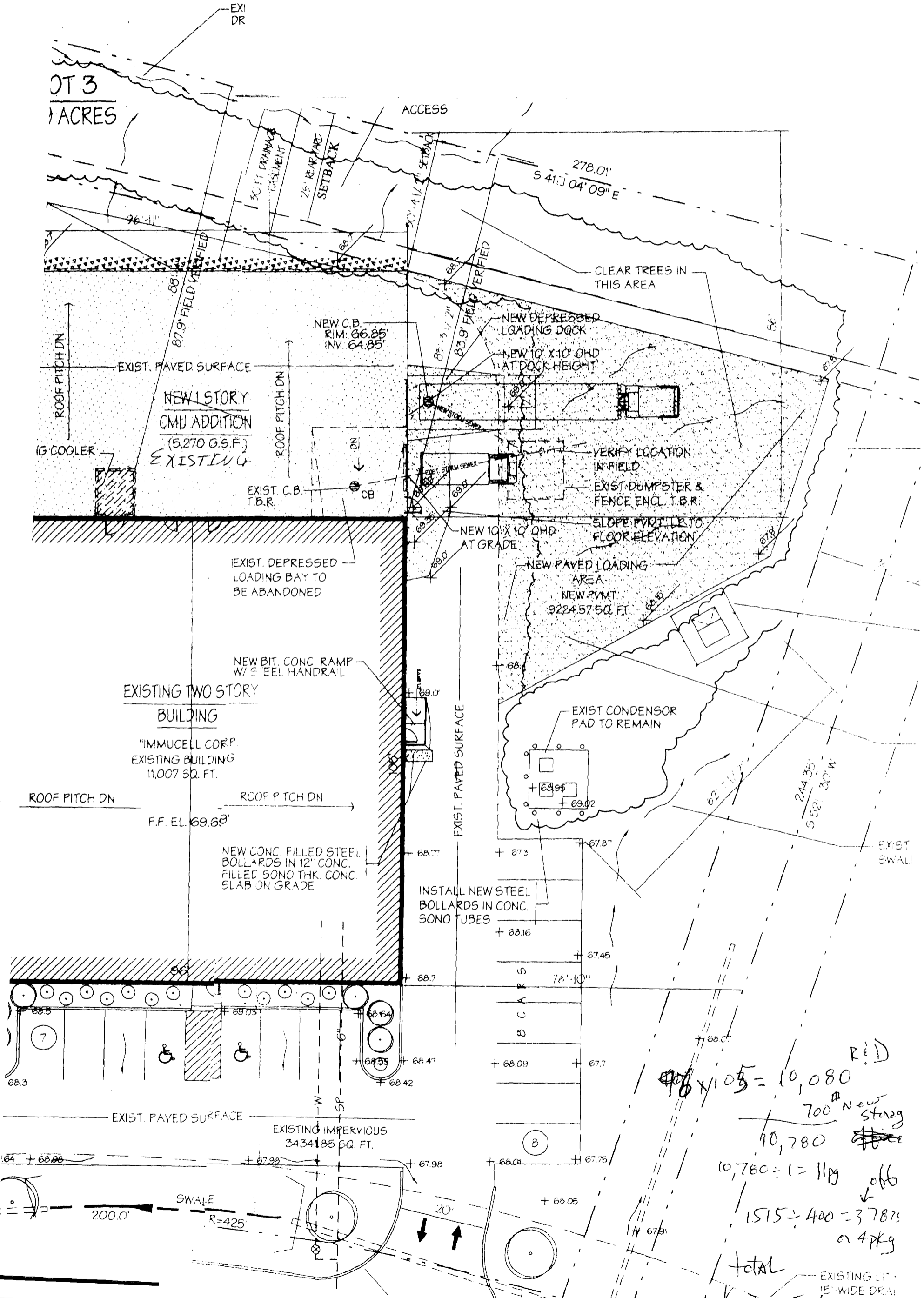


LOT 3
1 ACRES



$106 \times 105 = 10,080$ R.I.D.
 700^{th} New Stage
 $10,780$
 $10,780 \div 1 = 11 \text{ pg}$ off
 $1515 \div 400 = 3.7875$
 or 4 pg
total
 EXISTING 15' WIDE DRAIN
 15' WIDE DRAIN

ATLANTA ME 04103

9 parking places

LOT 3
1.39 ACRES

ACCESS

EXIST. PARKING SPACES
TO BE ABANDONED

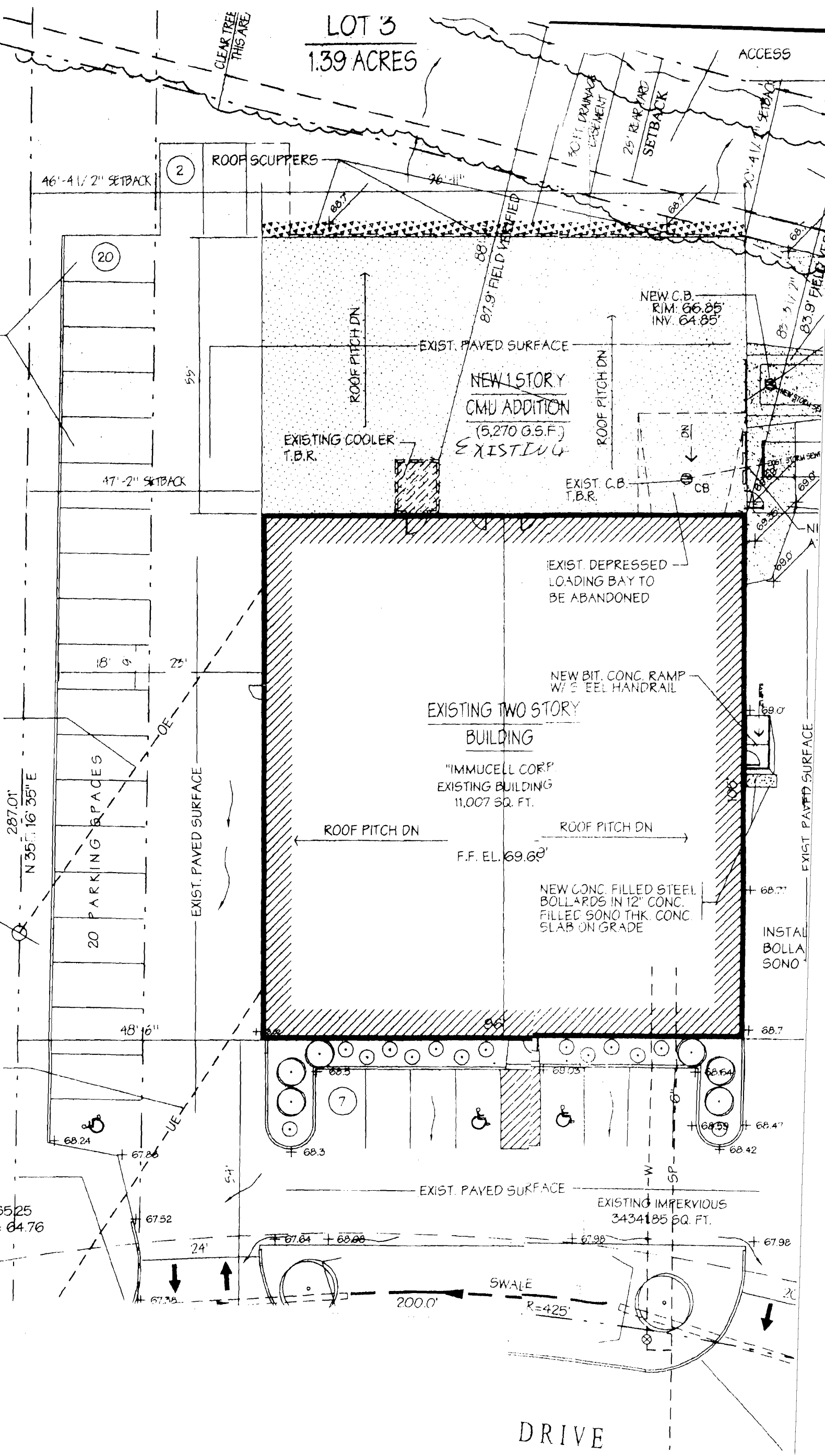
LOT 2

EXISTING 200 A, 1 PH, 4W
UNDERGROUND ELECTRIC
SERVICE

PT. OF BUILDING INSPECTION
CITY OF PORTLAND, ME
DEC - 6 2006
RECEIVED

EXISTING 200 A, 1 PH, 4W
UNDERGROUND ELECTRIC
SERVICE

15" RCP
S=0.010
INV IN = 65.25
INV OUT = 64.76



DRIVE