

© 2017 RYAN SENATORE ARCHITECTURE

**DEFINITIVE BREWING COMPANY**  
 35 INDUSTRIAL WAY  
 PORTLAND MAINE



RYAN SENATORE  
 ARCHITECTURE  
 565 CONGRESS STREET  
 PORTLAND, MAINE 04101  
 207-650-6414  
 senatorearchitecture.com

CONSULTANTS:

REVISIONS:

DATE: DECEMBER 14, 2017

PROJECT No. 1772

DRAWN BY: JPF

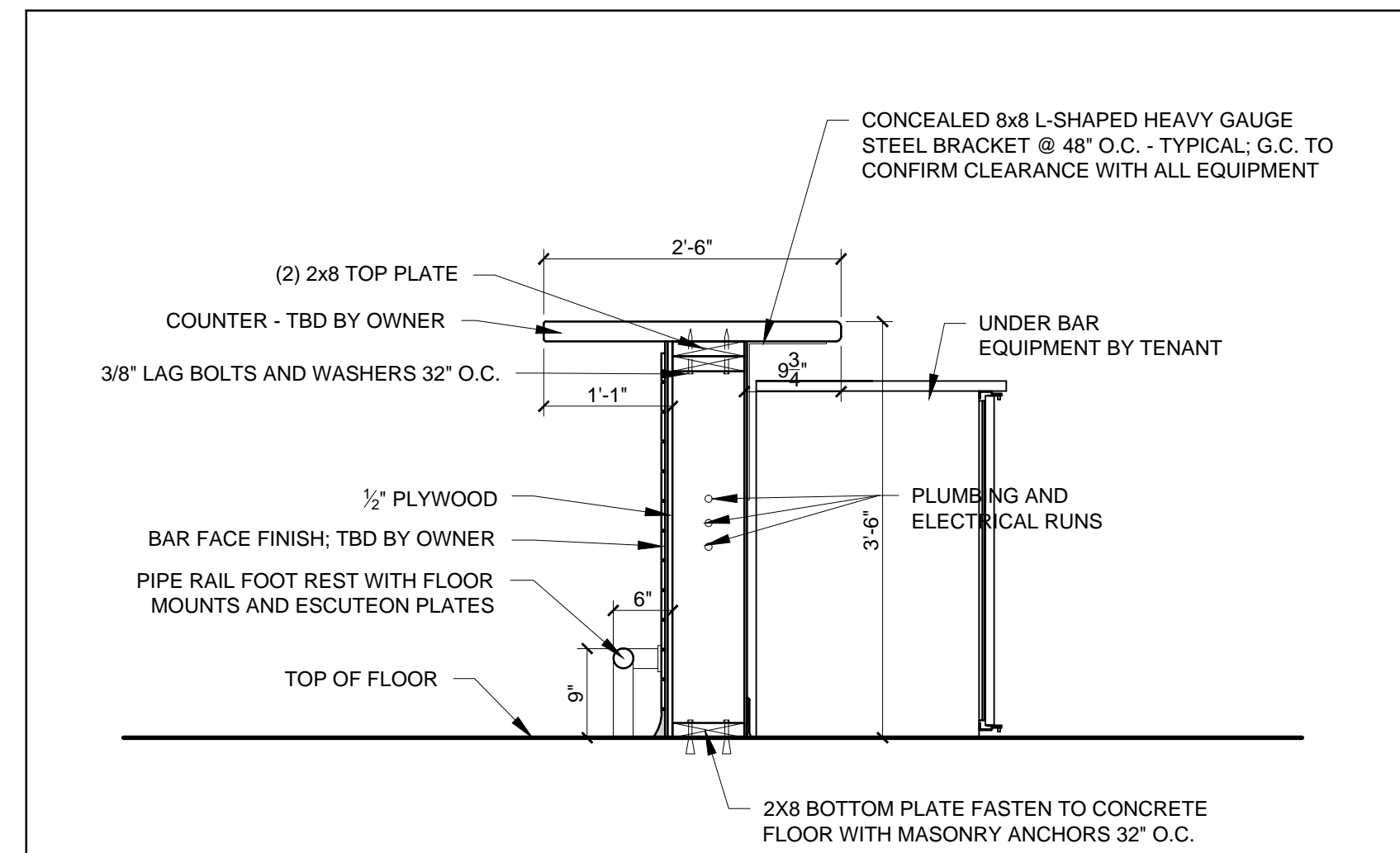
CHECKED BY: RJS

SCALE: AS NOTED

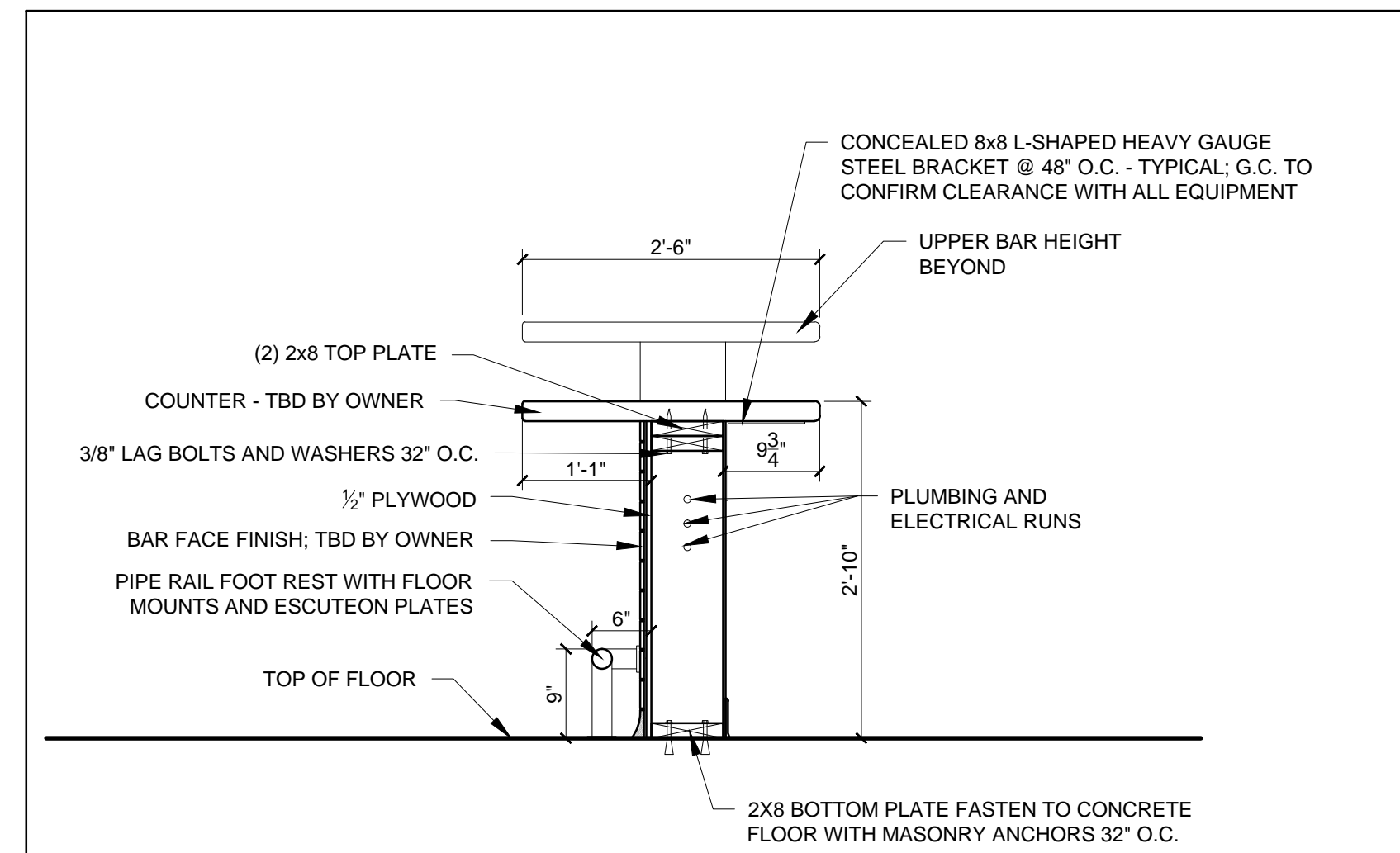
SHEET TITLE:

DETAILS

A5-0



2 BAR SECTION DETAIL AT STANDARD HEIGHT  
 1/12" = 1'-0"



1 BAR SECTION DETAIL AT ADA HEIGHT LOCATION  
 1/12" = 1'-0"