

© 2017 RYAN SENATORE ARCHITECTURE

**DEFINITIVE BREWING COMPANY**  
 35 INDUSTRIAL WAY  
 PORTLAND MAINE



RYAN SENATORE  
 ARCHITECTURE  
 565 CONGRESS STREET  
 PORTLAND, MAINE 04101  
 207-650-6414  
 senatorearchitecture.com

CONSULTANTS:

REVISIONS:

DATE: DECEMBER 14, 2017

PROJECT No. 1772

DRAWN BY: JPF

CHECKED BY: RJS

SCALE: AS NOTED

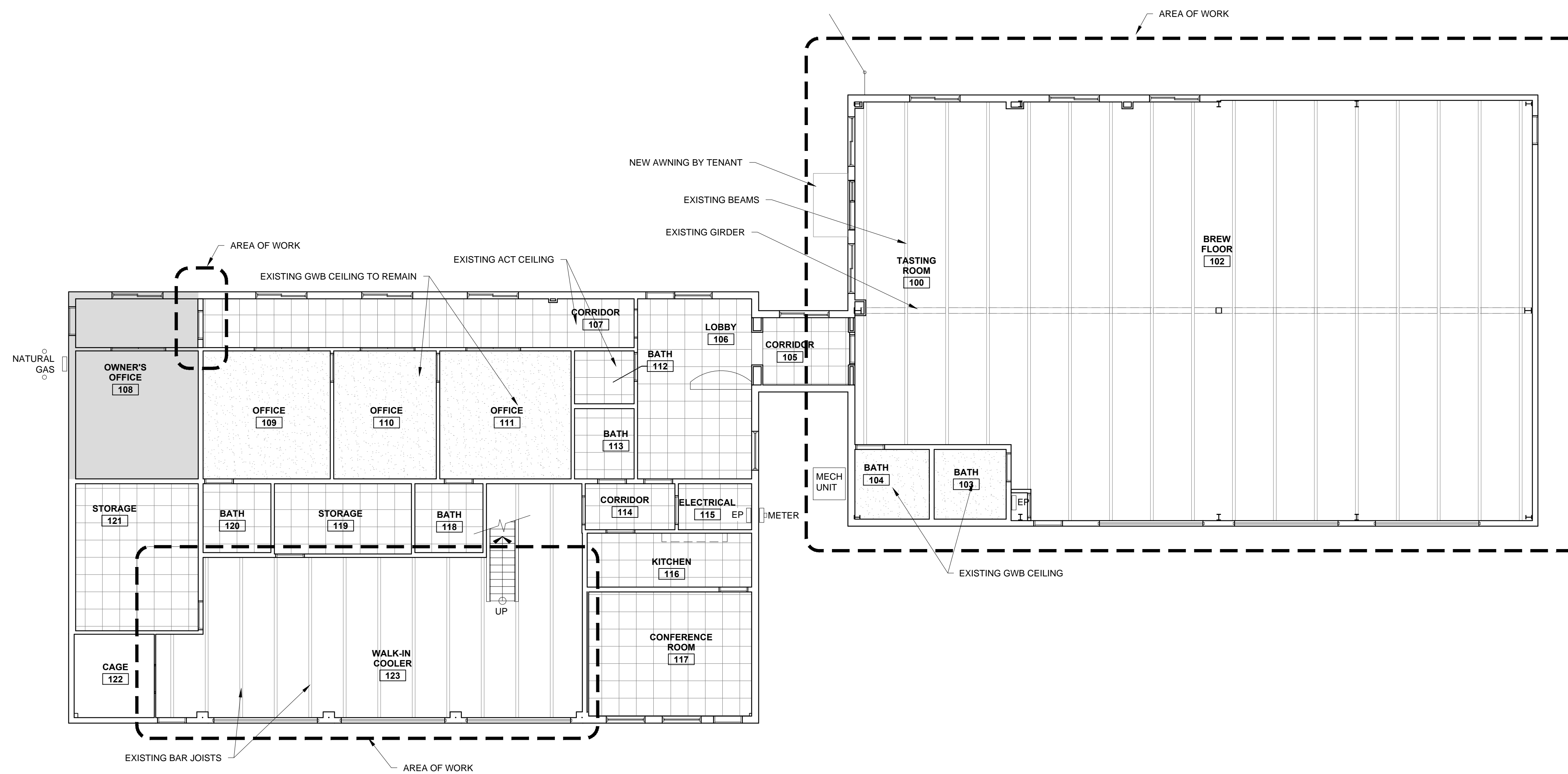
SHEET TITLE:

**REFLECTED  
 CEILING PLAN**

**A1-1**

RCP LEGEND	
	RECESSED LIGHTING
	SPEAKER
	FIRE ALARM (IN CEILING)
	DIFUSER
	SMOKE DETECTOR
	EMERGENCY LIGHTING
	12' GRILL
	24' GRILL
	2x2 LIGHT
	4x2 LIGHT

RCP NOTES	
1.)	LIGHTS NOT SHOWN - TBD BY OWNER
2.)	



1 FIRST FLOOR REFLECTED CEILING PLAN  
 1/8" = 1'-0"