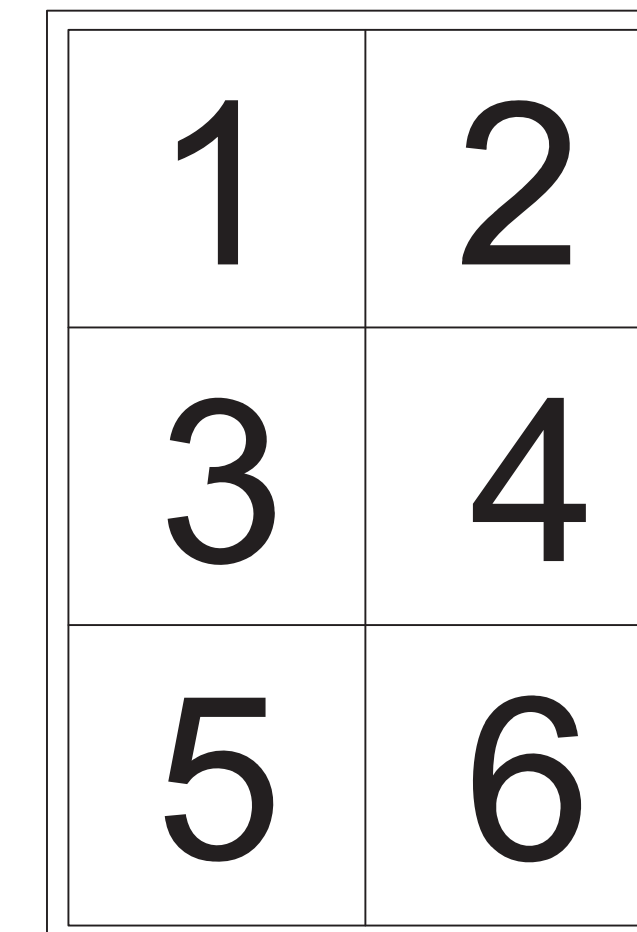
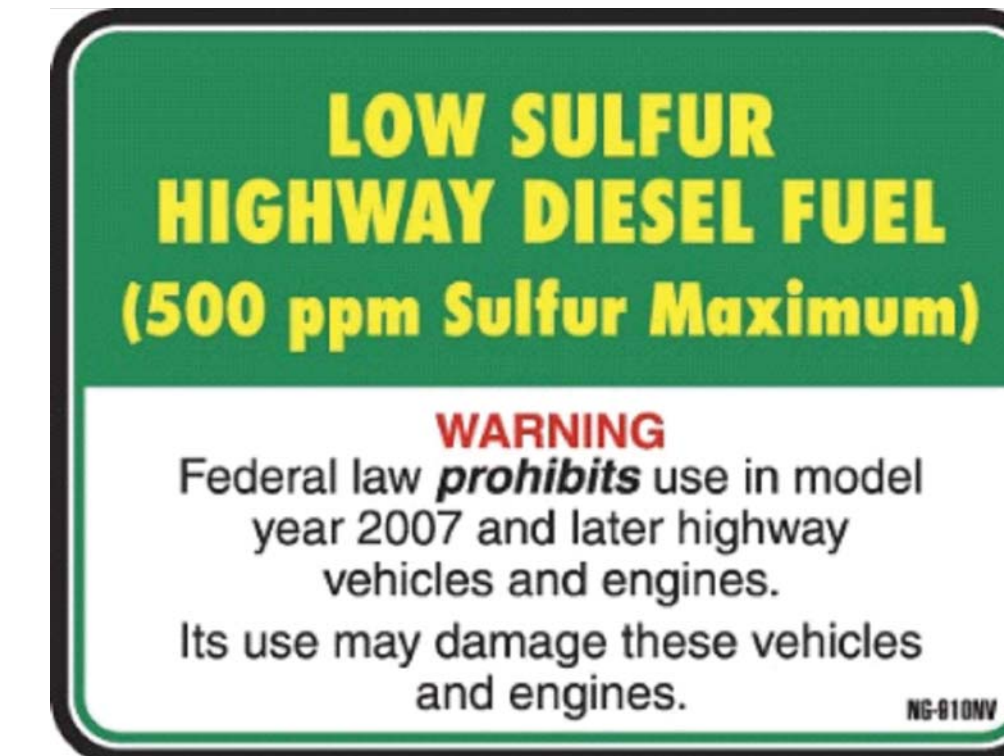
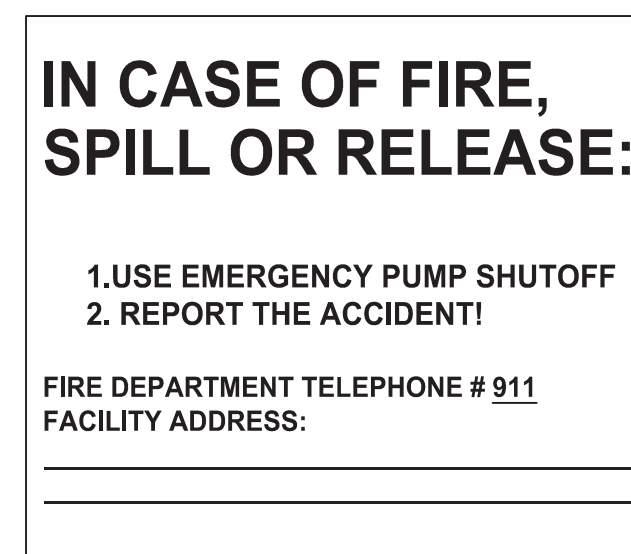
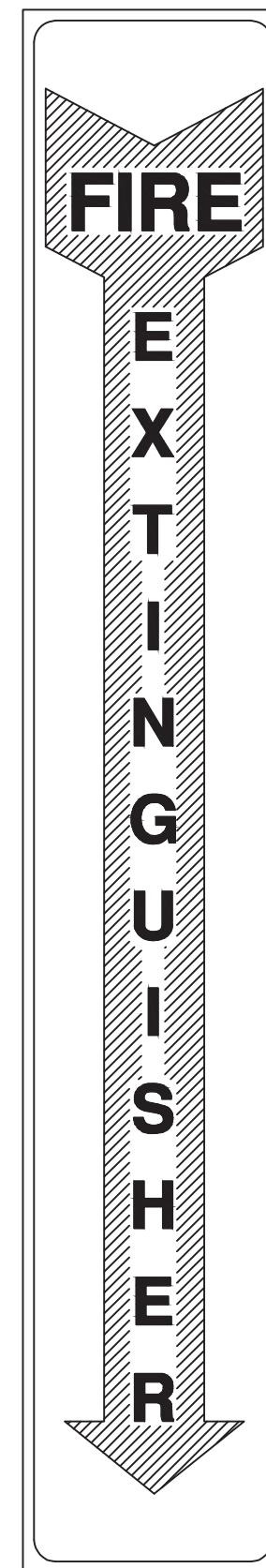
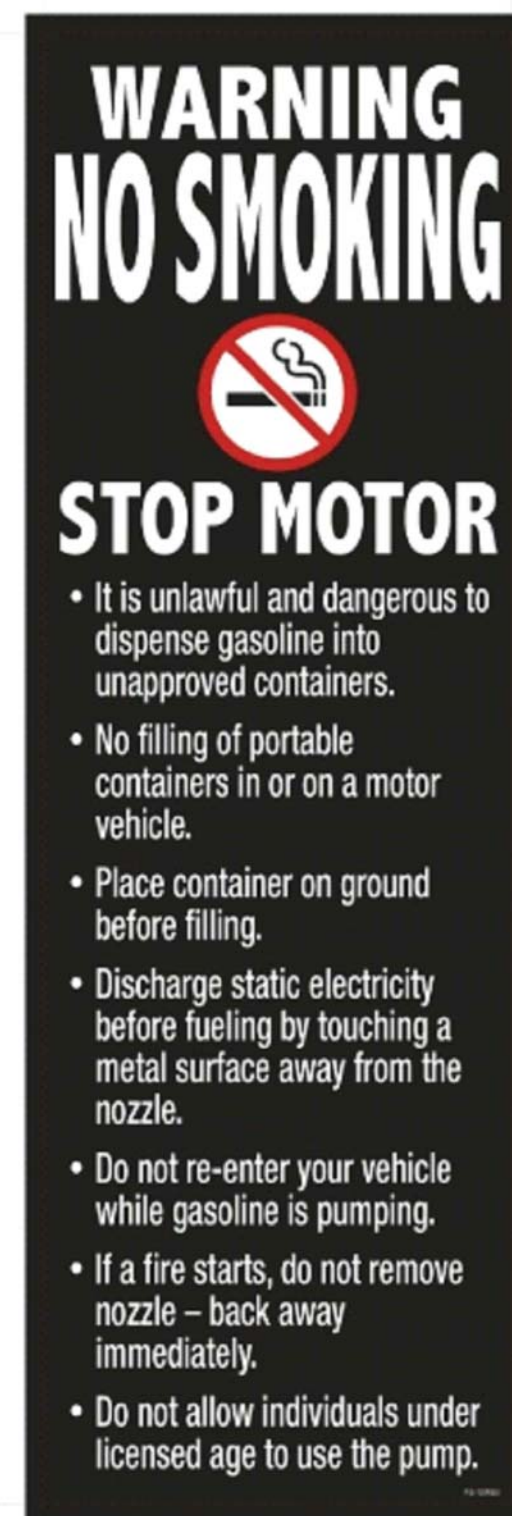


GENERAL NOTES

- SIGNAGE IS PROVIDED BY 7-11 OR GC. SIGNAGE TO BE INSTALLED BY CONTRACTOR PER 7-11 GUIDELINES.



9 WARNING NO SMOKING N.T.S.

8 FIRE EXTINGUISHER N.T.S.

7 IN CASE OF FIRE, SPILL OR RELEASE N.T.S.

6 GAS PUMPS ARE VIDEO MONITORED N.T.S.

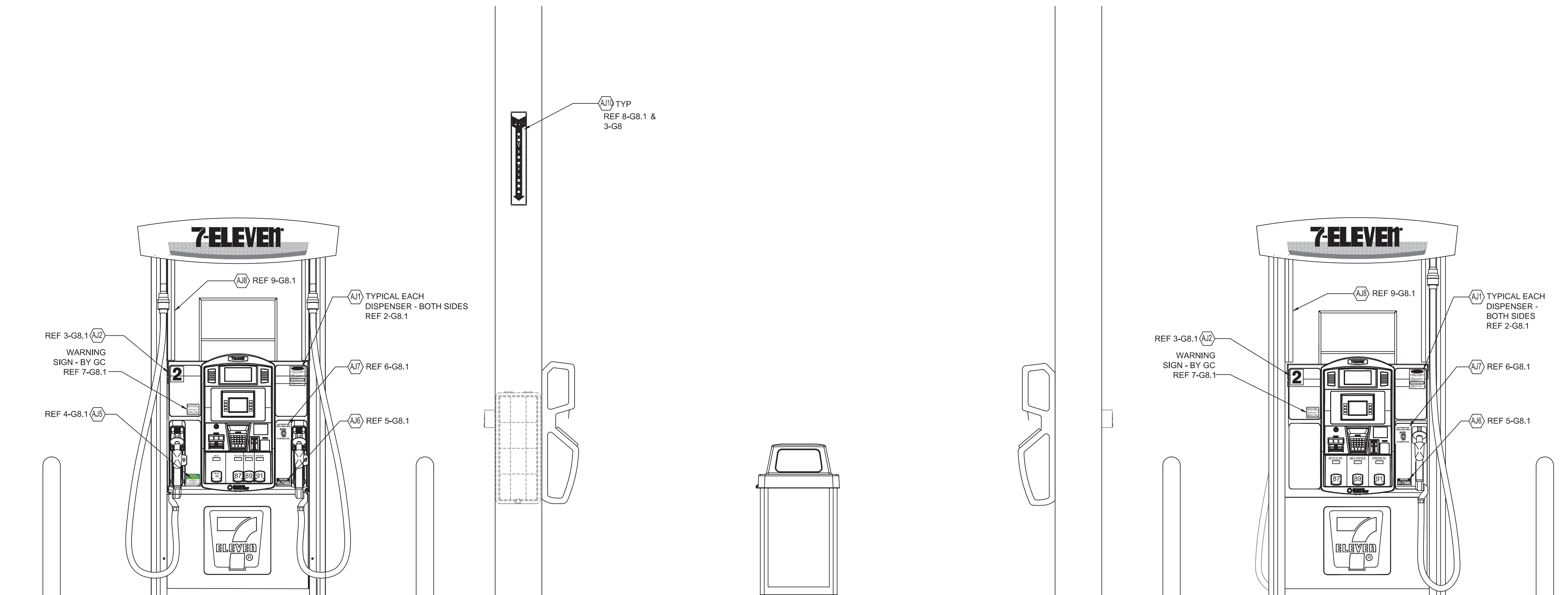
5 CONTAINS 10% ETHANOL N.T.S.

4 LOW SULFUR HIGHWAY DIESEL FUEL N.T.S.

3 DISPENSER NUMBERS N.T.S.



2 EMERGENCY SHUT OFF N.T.S.



1 DISPENSER SIGNAGE ELEVATION 3/4" = 1'-0"

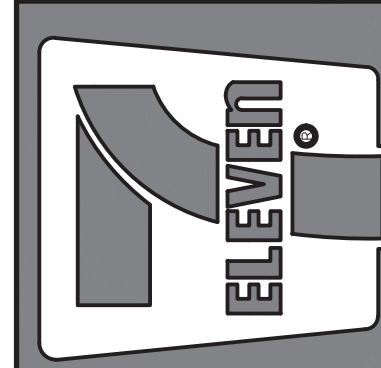
Rev. #	Date	Description

Proto 2nd Qtr 04-03-15

7-ELEVEN, INC.
3200 HACKBERRY ROAD, IRVING, TEXAS 75063

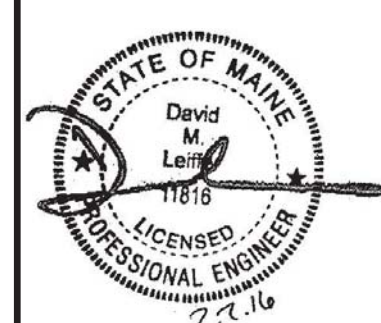
7-11 #32541
1917 FOREST AVE
PORTLAND, ME 04103

SIGNAGE DETAILS



Job#: SEI-16380.0222
Scale: AS NOTED
Date: 01/21/16
Drawn By: JMR
Checked By: CPS

Documents prepared by Core States Group are to be used only for the specific project and intended. Any extension of use to other projects, by owner or contractor, without the express written consent of Core States Group is done at the user's own risk. If used in a manner not intended, user will hold Core States Group harmless from all claims and losses.



SHEET: G8.1
FUELING - USA