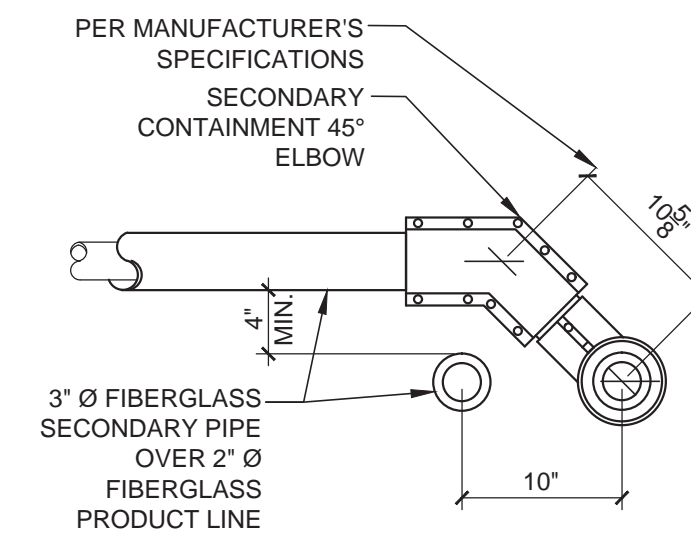
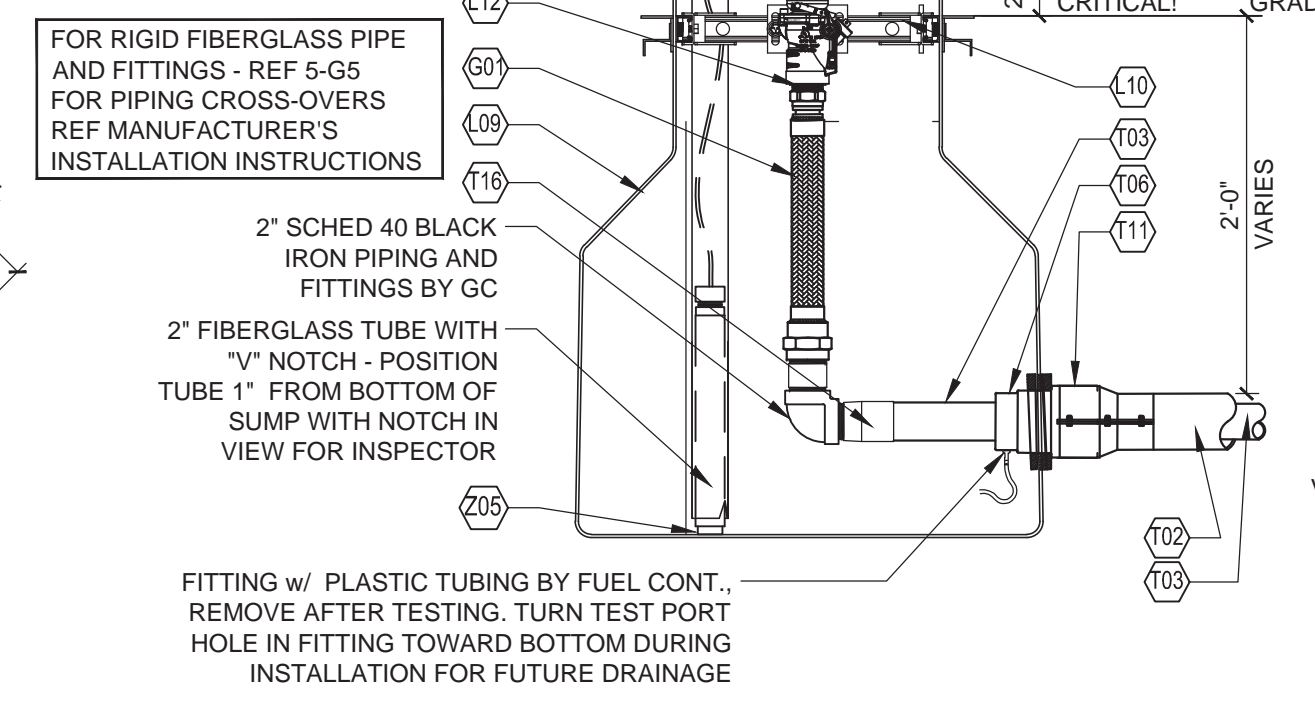


**5 PIPING CONNECTIONS**  
1" = 1'-0"

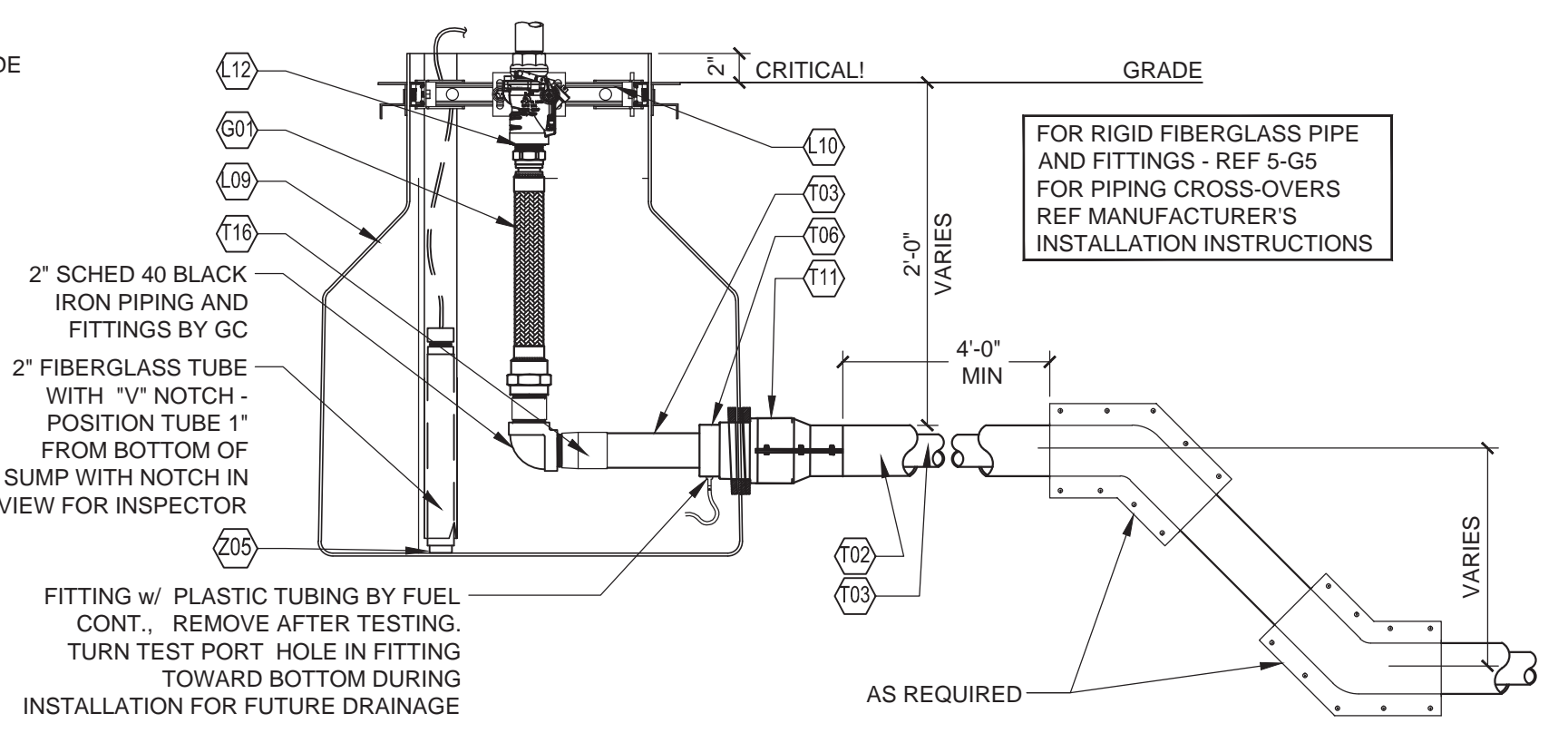


PER MANUFACTURER'S SPECIFICATIONS SECONDARY CONTAINMENT 45° ELBOW

3" Ø FIBERGLASS SECONDARY PIPE OVER 2" Ø FIBERGLASS PRODUCT LINE



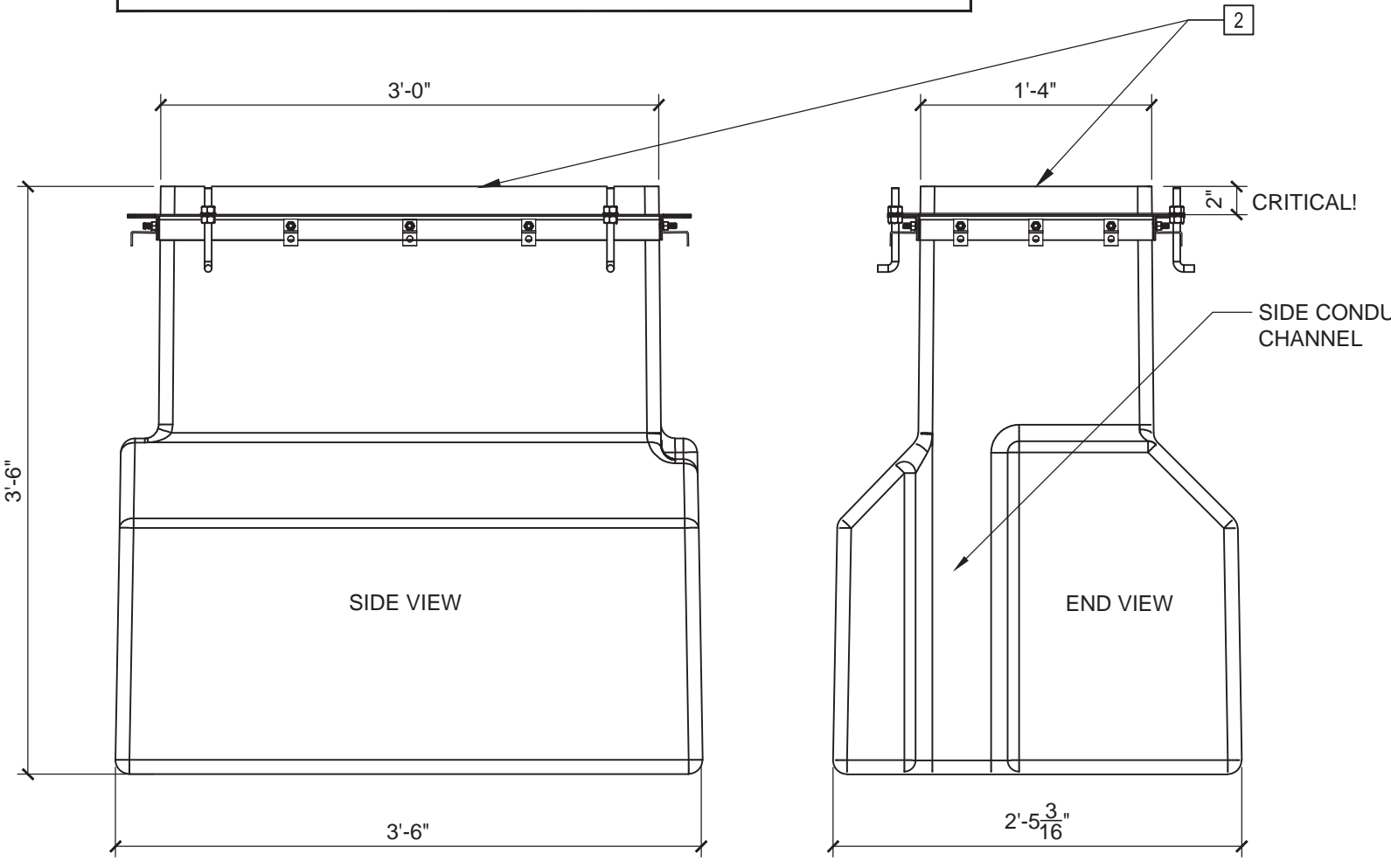
**END**



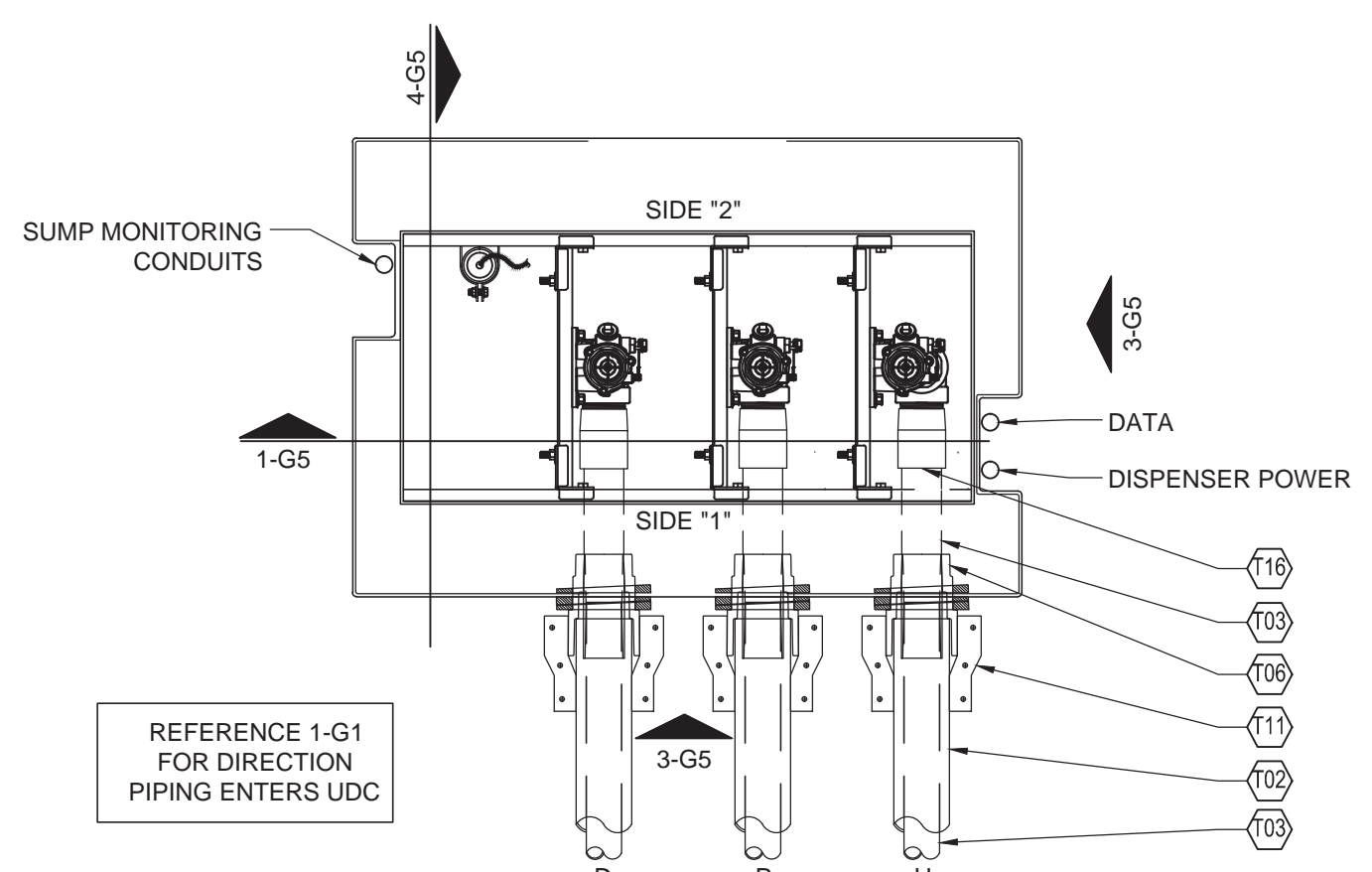
**INTERMEDIATE**

**4 DISPENSER SUMP SECTION**  
1" = 1'-0"

NOTE: THE DEEP DISPENSER SUMP (FDS-4021-SL) SHOWN IS TO PROVIDE CONTAINMENT FOR THE GILBARCO ENCORE DISPENSER.

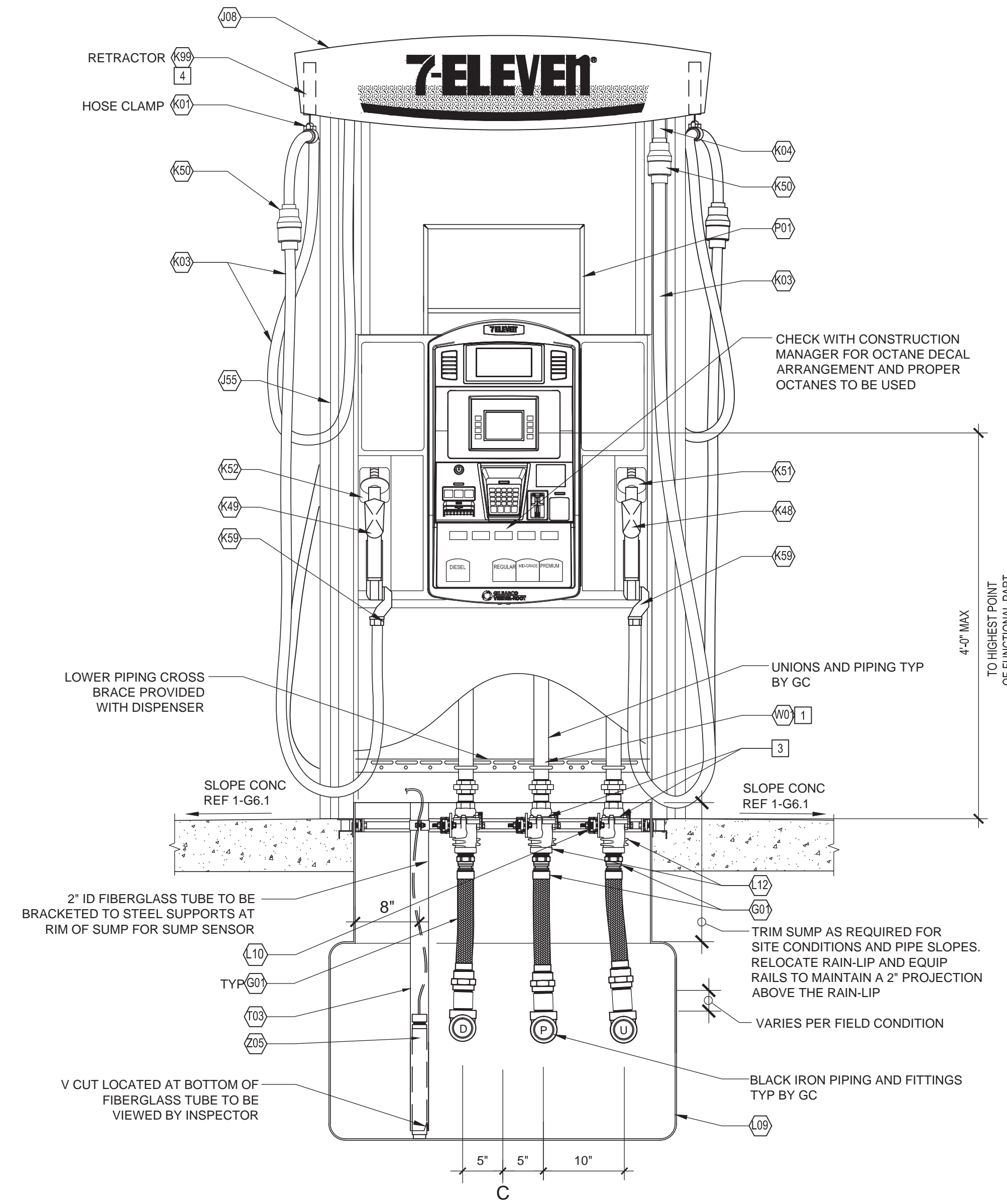


**3 DISPENSER SUMP ELEVATIONS**  
1" = 1'-0"



**3+1 DISPENSER**

**2 DISPENSER SUMP - PLAN VIEWS**  
1" = 1'-0"



**3+1 DISPENSER**

**1 GILBARCO ENCORE 500S DISPENSER**  
1" = 1'-0"

**GENERAL NOTES**

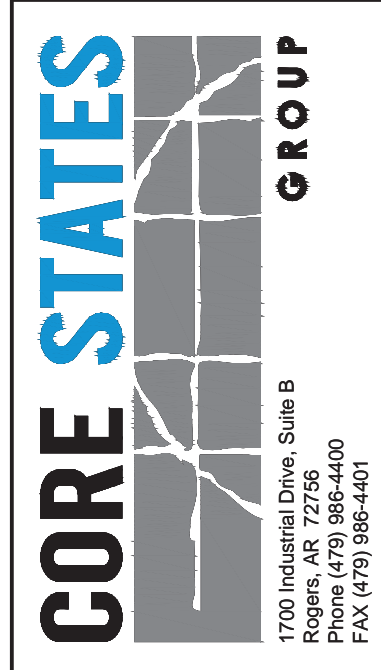
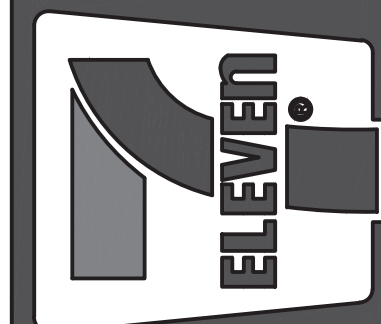
- AFTER ALL UNDERGROUND PIPING AND ELECTRIC CONDUITS ARE INSTALLED AND DURING EXCAVATION, BACKFILLING, AND CONCRETE POURING; A CONTINUOUS HYDROSTATIC TEST SHALL BE PERFORMED ON ALL SUMPS AND SPILL BUCKETS TO ENSURE TIGHTNESS AND PROPER INSTALLATION.
- SUMP TO BE CLEANED OF DEBRIS AND DRIED AFTER TESTING.

**KEY NOTES**

- SOURCE NORTHAMERICA TO SUPPLY U-BOLTS TO SECURE PIPING TO CROSS BRACKETS SUPPLIED BY GILBARCO.
- CRITICAL - MUST HAVE 2" RAIN LIP ABOVE INTEGRAL RAIN LIP FRAME.
- SHEAR SECTIONS OF SHEAR VALVES SHALL BE MOUNTED FLUSH WITH TOP OF PAVEMENT.
- HOSE RETRACTOR REQUIRES FIELD MODIFICATION, REF MANUFACTURER'S INSTALLATION INSTRUCTIONS FOR SPECIFIC USE.

Rev. #	Date	Description

7-ELEVEN, INC.  
3200 HACKBERRY ROAD, IRVING, TEXAS 75063  
7-11 #32541  
1917 FOREST AVE  
PORTLAND, ME 04103  
DISPENSER AND SUMP DETAILS



Job#: SEI-16380.0222  
Scale: AS NOTED  
Date: 01/21/16  
Drawn By: JMR  
Checked By: CPS

Documents prepared by Core States Group are to be used only for the project and site specific use for which they are intended. Any extension of use to other projects, by owner or otherwise, without the expressed, written consent of Core States Group is prohibited. Core States Group is not responsible for any other than specifically intended, user will hold Core States Group harmless from all claims and losses.

