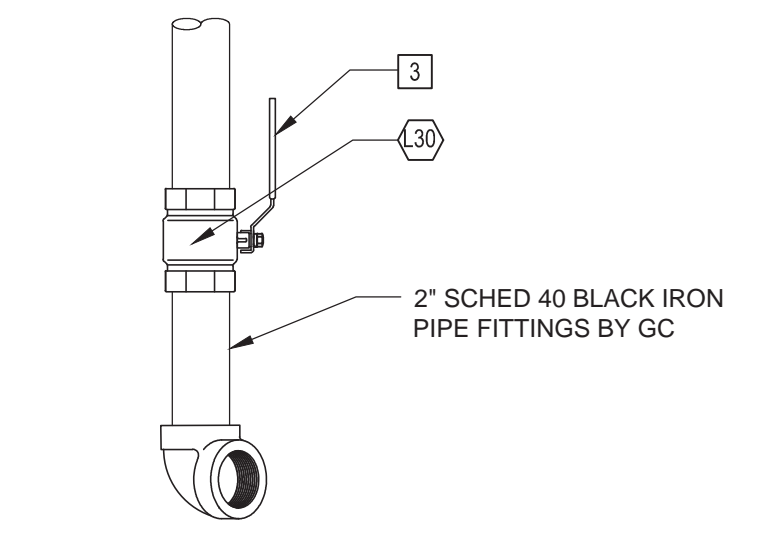


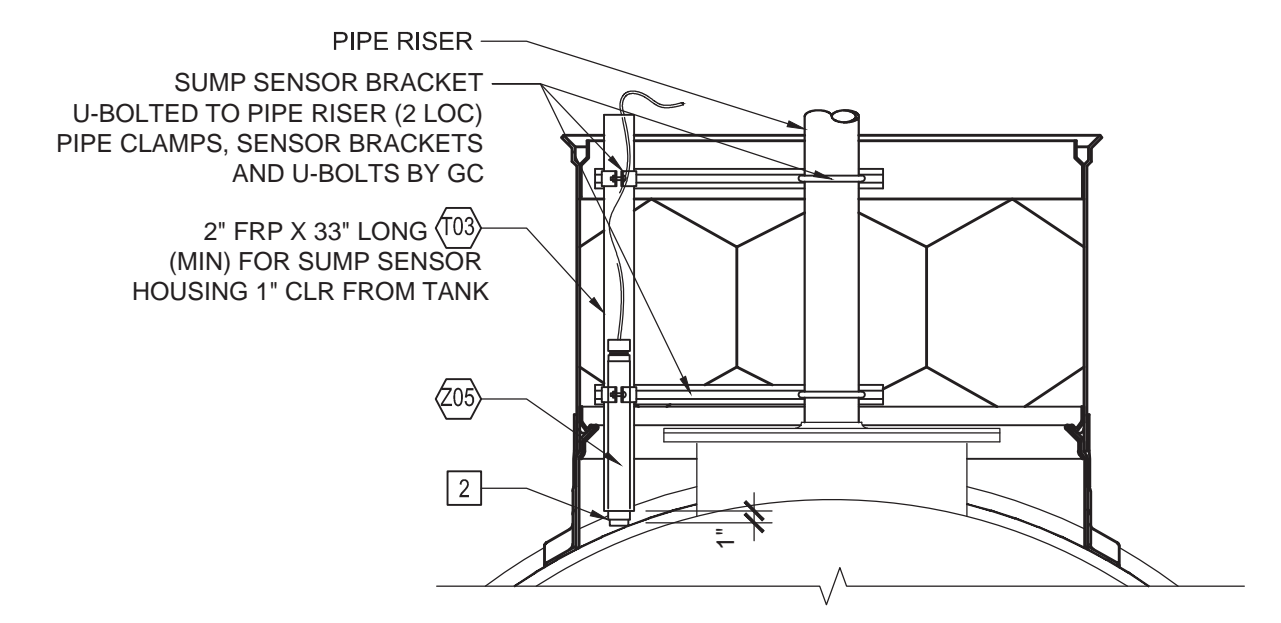
LAY-UP SAMPLES SHOWN ARE FOR REFERENCE ONLY. REFER TO MANUFACTURER'S INSTALLATION INSTRUCTIONS FOR SPECIFIC LAY-UP MATERIALS AND METHODS.

6 TANK SUMP LAYUP DETAILS  
NTS



SINGLE PRODUCT OUTPUT

5 FUEL PLUMBING TREE DETAILS  
1 1/2"=1'-0"



SUMP SENSOR AND SENSOR BRACKET DETAIL  
3/4"=1'-0"

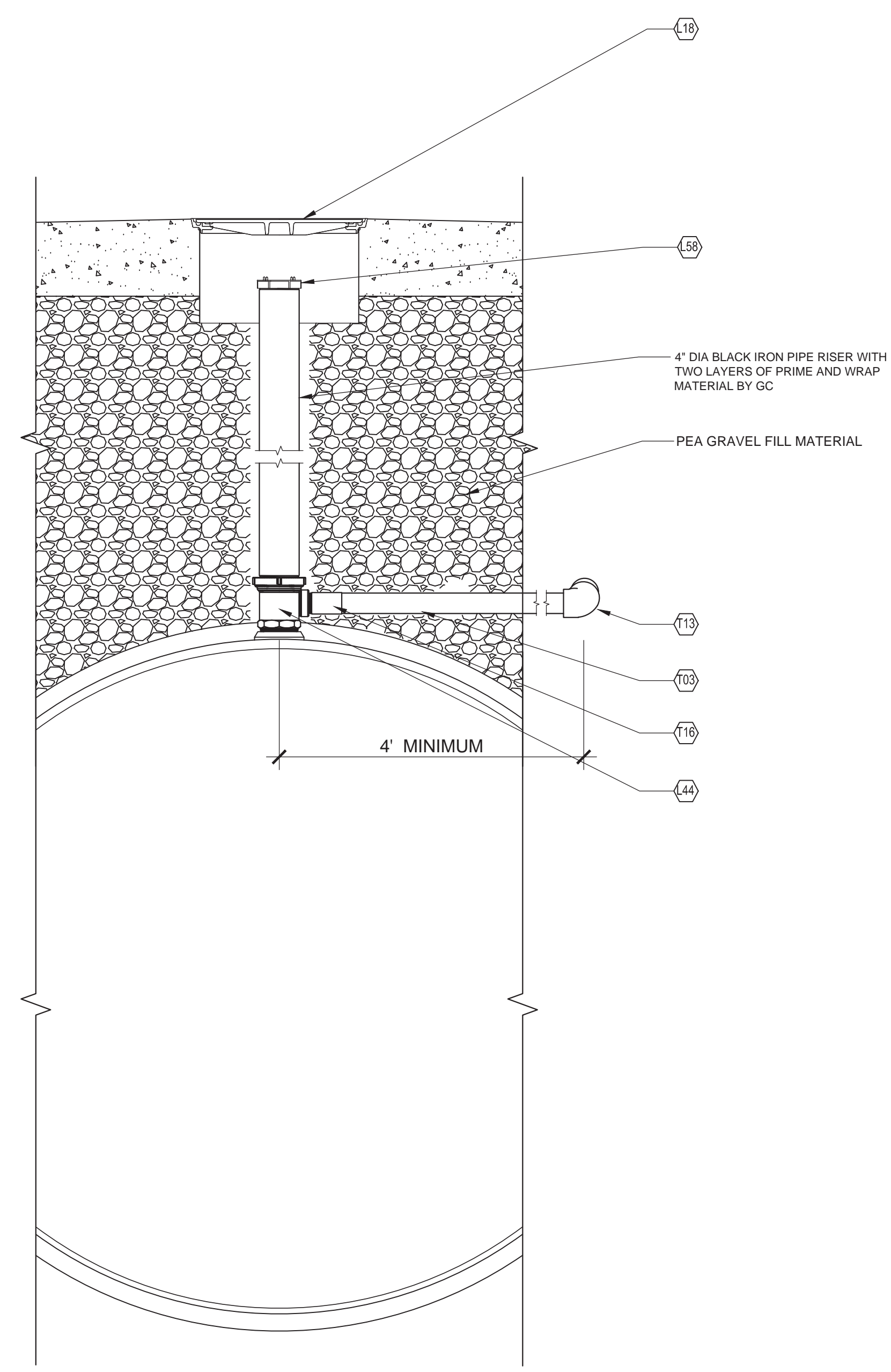
4

KEY NOTES

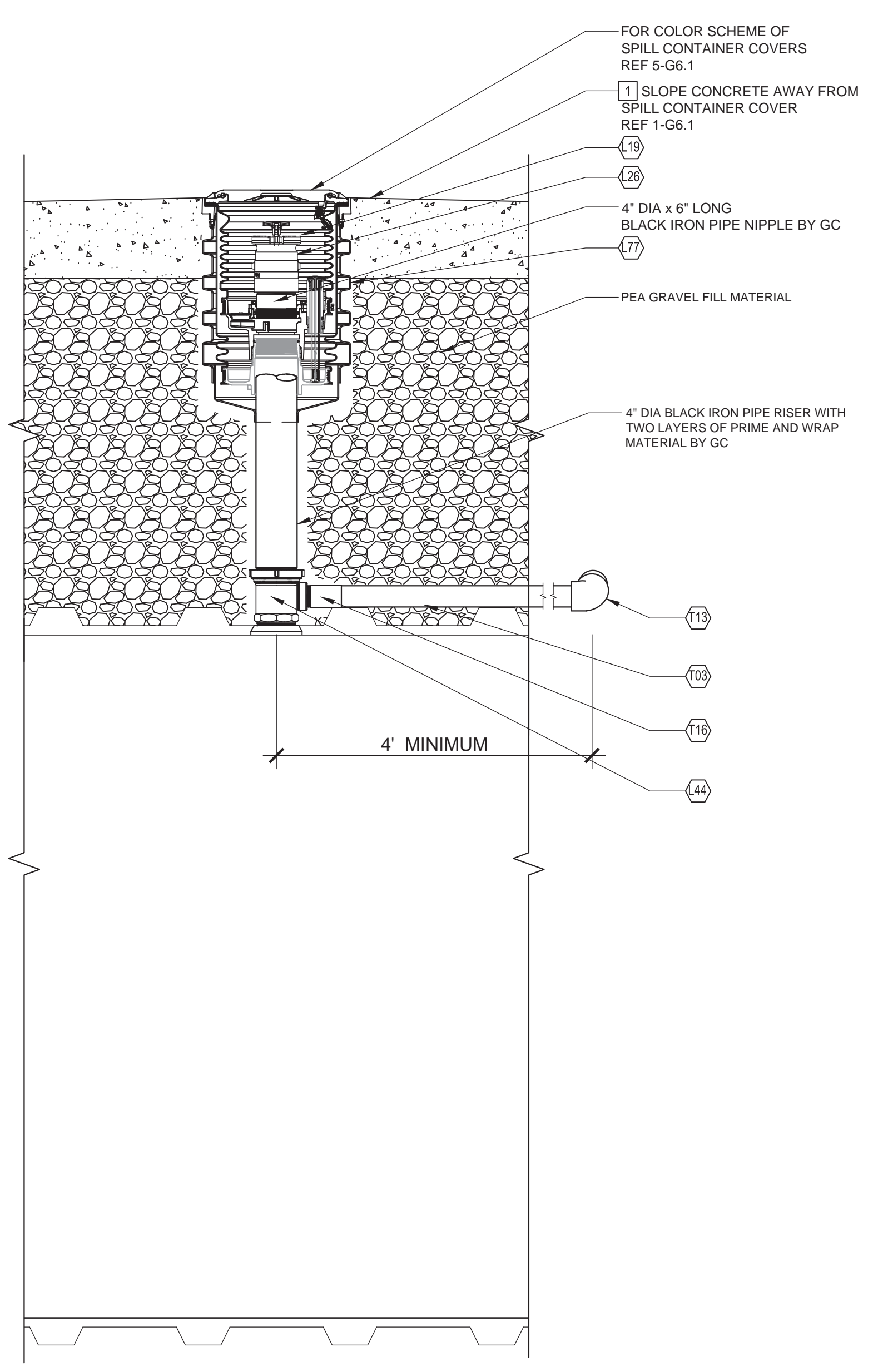
- 1 CONCRETE SLAB. REF 1-G6.1 AND CIVIL DRAWINGS FOR TOS ELEVATIONS. ALL MANHOLES COVERS WITHIN THE TANK SLAB AREA ARE TO BE SET 1" ABOVE THE FINISH GRADE AND SLOPE CONCRETE AWAY FROM MANWAY COVERS AT 2% GRADE. CROWN CONCRETE AS TO NOT INHIBIT WATER DRAINAGE OFF THE TANK SLAB (NO POOLING).
- 2 SUMP SENSOR TO REST AT LOWEST POINT OF SUMP ENCLOSURE ON PRODUCT PIPING SIDE OF SUMP. TANK CONTRACTOR TO SUPPLY UNISTRUT BRACKETS, PIPE CLAMPS AND 2" FRP SLEEVE FOR 2-POINT MOUNTING OF THE SLEEVE.
- 3 POSITION BALL VALVE FOR UNOBSTRUCTED USE OF SHUT-OFF HANDLE.
- 4 OVERFILL PREVENTION VALVE INSTALLED PER MFR'S SPECIFICATIONS. SET OVERFILL DEVICE FOR RESTRICTION OF FLOW AT OR BELOW 90% TANK CAPACITY AND POSITIVE SHUT-OFF AT 95% TANK CAPACITY TO MEET NFPA 30 REQUIREMENTS

Rev. #	Date	Description

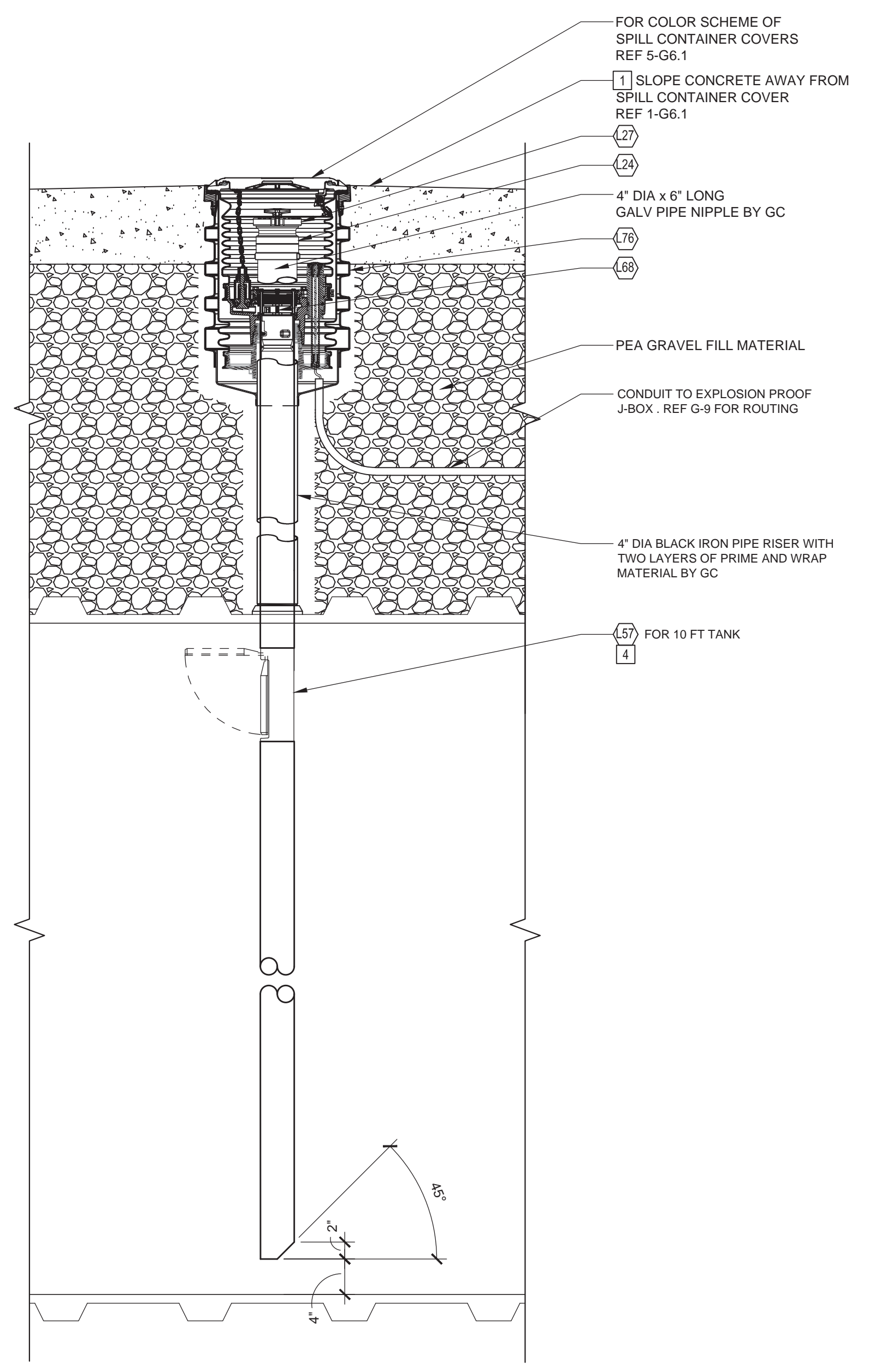
Proto 2nd Qtr 04-03-15



3 DIESEL VENT DETAIL  
1"=1'-0"



2 RUL / PUL VENT/VAPOR DETAIL  
1"=1'-0"



1 FUEL FILL CONTAINER DETAIL  
1"=1'-0"

7-ELEVEN, INC.  
3200 HACKBERRY ROAD, IRVING, TEXAS 75063  
7-11 #32541  
1917 FOREST AVE  
PORTLAND, ME 04103  
TANK SUMP DETAILS



Job#: SEL-16380.0222	Scale: AS NOTED	Date: 01/21/16	Drawn By: JMR	Checked By: CPS
----------------------	-----------------	----------------	---------------	-----------------

Documents prepared by Core States Group are to be used for the specific use for which they are intended. Any extension of use to other projects, by owner or otherwise, without the expressed, written consent of Core States Group is prohibited. Core States Group is not liable for any other than that specifically intended, user will hold Core States Group harmless from all claims and losses.

