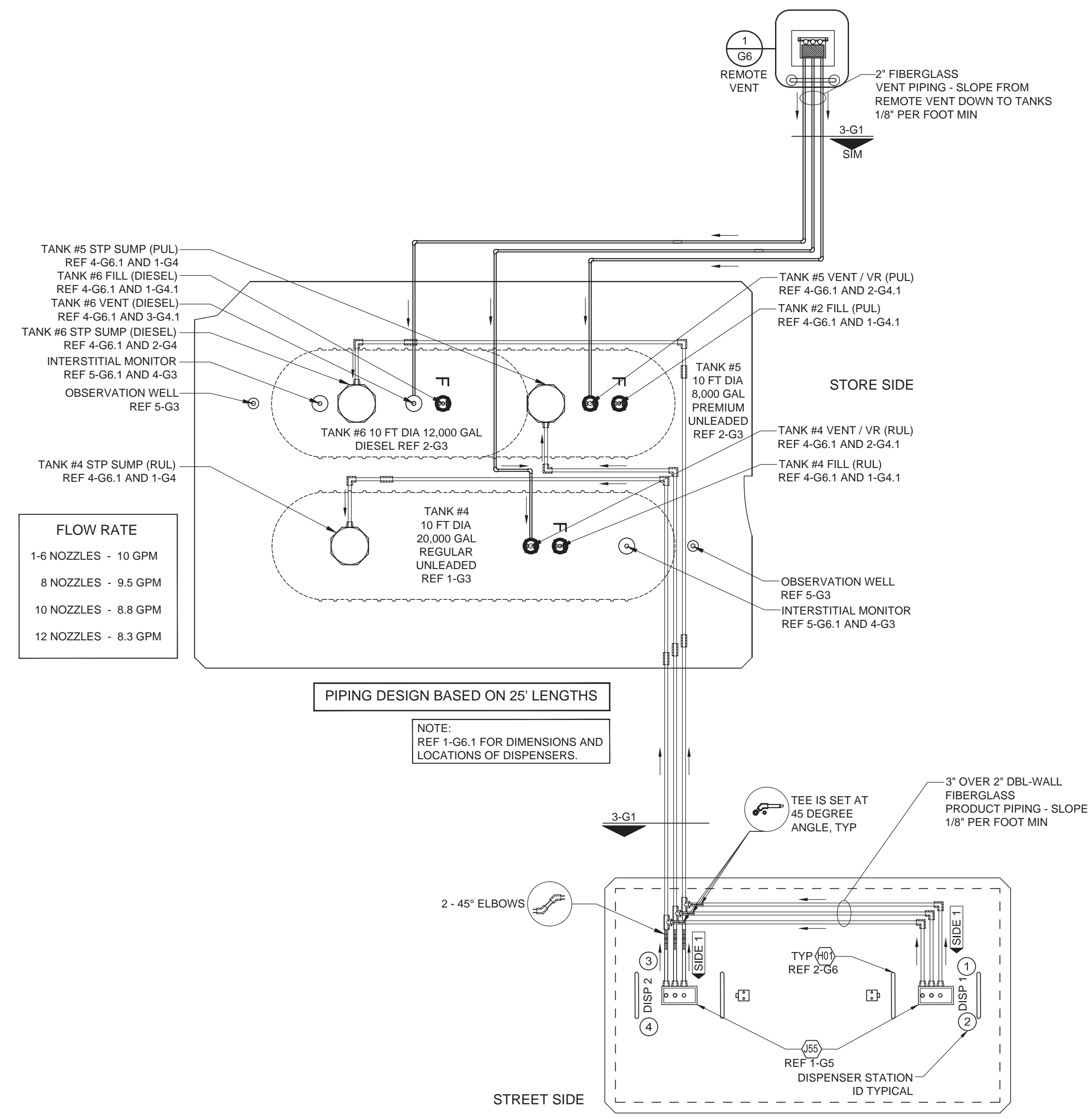


3 PIPING TRENCH SECTION
1/8"=1'-0"

2 TANK SLAB PLAN
1/8"=1'-0"



1 FUEL PIPING PLAN
1/8"=1'-0"

GENERAL NOTES

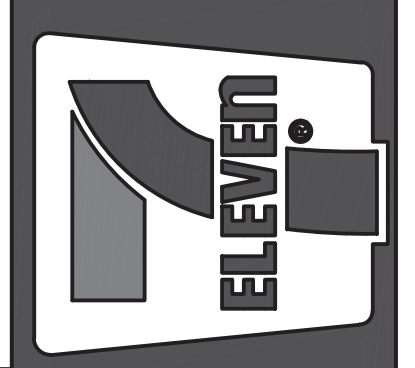
- ALL CONSTRUCTION SHALL MEET COUNTY STANDARDS. CONTRACTOR TO SECURE ENTIRE CONSTRUCTION AREA WITH CHAIN LINK FENCING DURING CONSTRUCTION PERIOD.
- THE CONTRACTOR SHALL IMMEDIATELY NOTIFY ENGINEER OF ANY DIFFERENCES BETWEEN THE ACTUAL FIELD CONDITIONS AND THE PLANS BEFORE PROCEEDING WITH CONSTRUCTION.
- PETROLEUM CONTRACTOR SHALL BE RESPONSIBLE FOR THE INTEGRITY OF THE PIPING SYSTEM DURING CANOPY ERECTION AND CONCRETE FLATWORK INSTALLATION.
- AFTER COMPLETING INSTALLATION OF DISPENSERS, THE PETROLEUM CONTRACTOR IS TO INSTALL BRIGHT ORANGE CONSTRUCTION FENCE AROUND ENTIRE DISPENSER.
- PETROLEUM CONTRACTOR IS TO BE AWARE THAT ON THE DAY THE GASOLINE SYSTEM IS PUT INTO SERVICE, THE GAS CONTRACTOR AND A GILBARCO AUTHORIZED SERVICE CONTRACTOR MUST BE ON SITE ONE (1) HOUR PRIOR TO STARTUP AND MUST REMAIN ON SITE THREE (3) ADDITIONAL HOURS FOR A TOTAL OF FOUR (4) HOURS. ANY COSTS INCURRED OVER FOUR (4) HOURS DUE TO FUELING SYSTEM ISSUES, SHOULD BE BILLED AS A CHANGE ORDER.

KEY NOTES

- 6" CONCRETE SLAB AT FUELING CANOPY. REF 1-G0.1 AND CIVIL DRAWINGS FOR TOS ELEVATIONS.
- GEOTECH FABRIC MATERIAL TO EXTEND 12" PAST EACH SIDE OF PIPING TRENCH AND TANK EXCAVATION.
- PIPING TRENCHES SHALL BE DUG IN SUCH A MANNER THAT THE TRENCH WIDTH IS EQUAL TO AT LEAST TWICE WIDTH OF ALL PIPING CONTAINED WITHIN. MAINTAIN A MINIMUM OF 4" (10cm) CLEAR DISTANCE BETWEEN PIPING POSITIONED IN THE TRENCH AND 6" WHERE PIPING CROSSES OVER EACH OTHER. THE BOTTOM OF THE TRENCH SHALL BE AS UNIFORM AS POSSIBLE TO ELIMINATE HIGH SPOTS AND ENSURING AN EVEN LAYER OF BEDDING MATERIAL UNDER THE PIPE. REMOVE ALL SHARP ROCKS AND DEBRIS FROM THE TRENCH BOTTOM BEFORE BEDDING MATERIAL IS INSTALLED.
- SITE CONDITIONS MAY CAUSE VARIATIONS WHICH MUST BE APPROVED BY 7-ELEVEN AND MANUFACTURER. PIPING BURIAL DEPTHS LESS THAN 18" REQUIRES 7-ELEVEN APPROVAL.

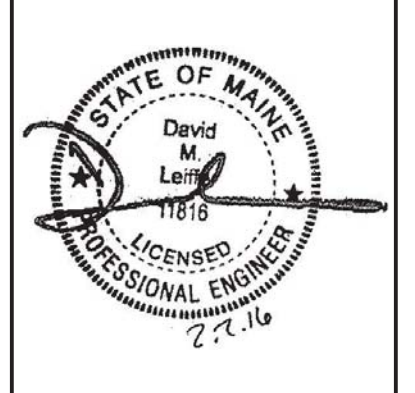
Rev. #	Date	Description

7-ELEVEN, INC.
3200 HACKBERRY ROAD, IRVING, TEXAS 75063
7-11 #32541
1917 FOREST AVE
PORTLAND, ME 04103
FUELING PIPING AND TANK PLAN



Job#: SEL-16380.0222
Scale: AS NOTED
Date: 01/21/16
Drawn By: JMR
Checked By: CPS

Documents prepared by Core States Group are to be used only for the specific use intended. Any extension of use to other projects, by owner or otherwise, without the expressed, written consent of Core States Group is prohibited. Core States Group is not responsible for any claims or losses resulting from the use of these documents for any other than the specifically intended use. User will hold Core States Group harmless from all claims and losses.



SHEET:
G1
FUELING - USA