



7-ELEVEN

EXISTING STORE REMODEL W/ FUELING

STORE NO. 32541

1917 FORREST AVE

PORTLAND, ME 04103

SHEET INDEX

FUELING CANOPY AND UNDERGROUND STORAGE TANKS	
Description	Date
G0	FUELING CANOPY COVER SHEET AND INDEX
G0.1	FUELING ARCHITECTURAL SITE PLAN
G0.2	FUELING TRUCK ROUTE
G0.3	FUELING DEMO PLAN
G1	FUELING PIPING AND TANK PLAN
G3	TANK SECTIONS
G4	TANK SUMP DETAILS
G4.1	TANK SUMP DETAILS
G5	DISPENSER AND SUMP DETAILS
G6	REMOTE VENT AND DETAILS
G6.1	FUELING DIMENSIONAL PLAN
G7	EQUIPMENT SCHEDULES
G8	FUELING CANOPY LAYOUT
G8.1	SIGNAGE DETAILS
G9	UST ELECTRICAL PLAN, ONE-LINE DIAGRAM AND PANEL SCHEDULE
G10	MISCELLANEOUS ELECTRICAL DETAILS
G11	ISOLATION RELAY BOX DETAIL
G12	SITE MONITORING EQUIPMENT DIAGRAM
G13	FUELING SPECIFICATIONS
G14	FUELING SPECIFICATIONS
G15	FUELING SPECIFICATIONS
G16	FUELING SPECIFICATIONS
G17	FUELING SPECIFICATIONS
CS1	CANOPY STRUCTURAL NOTES AND PLANS
CS2	CANOPY STRUCTURAL SECTION AND DETAILS

Rev. #

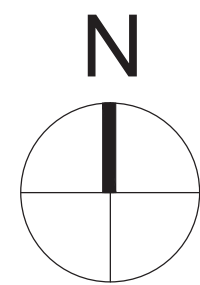
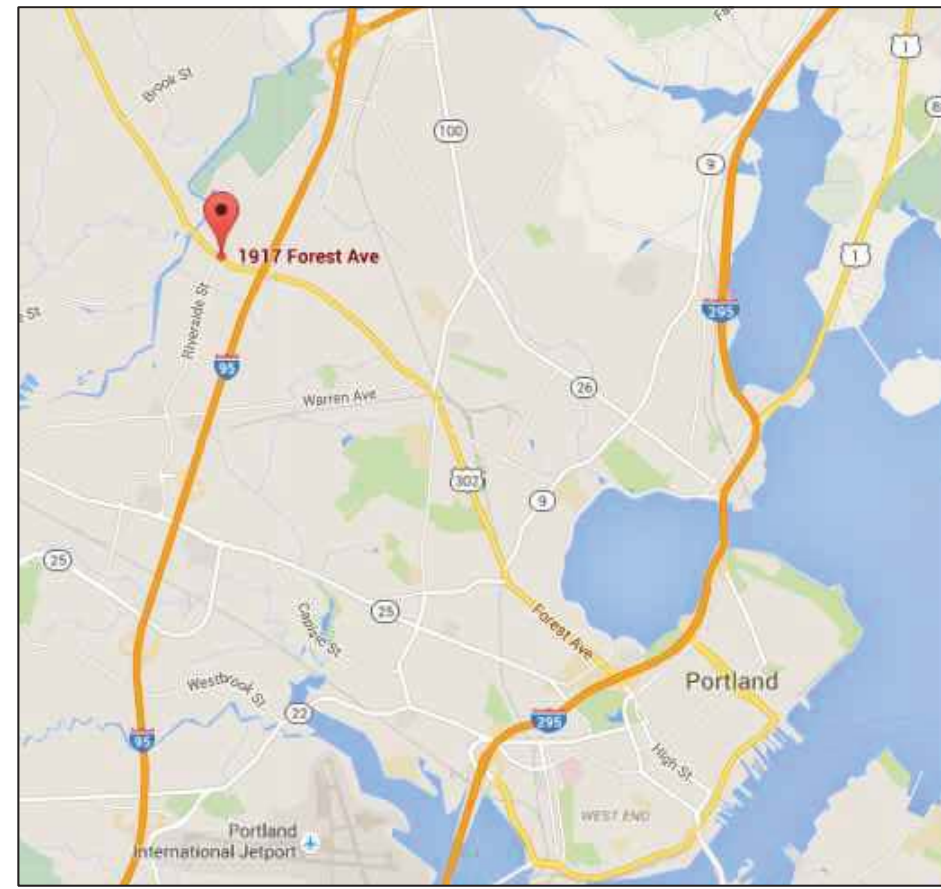
Proto 2nd Qtr 04-03-15

7-ELEVEN, INC.
3200 HACKBERRY ROAD, IRVING, TEXAS 75063

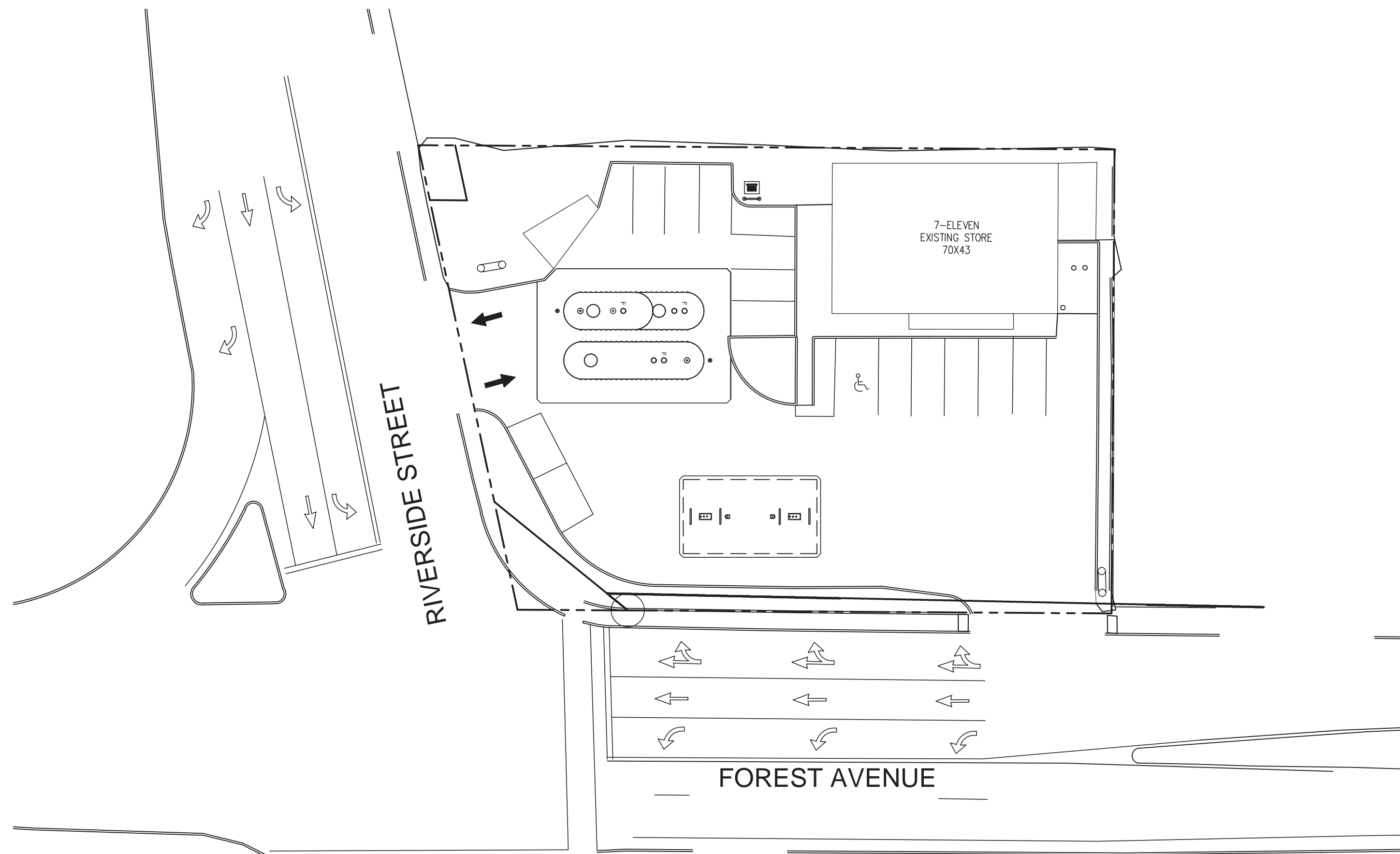
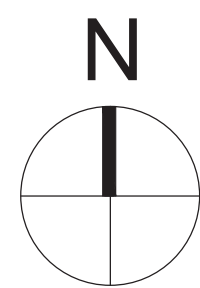
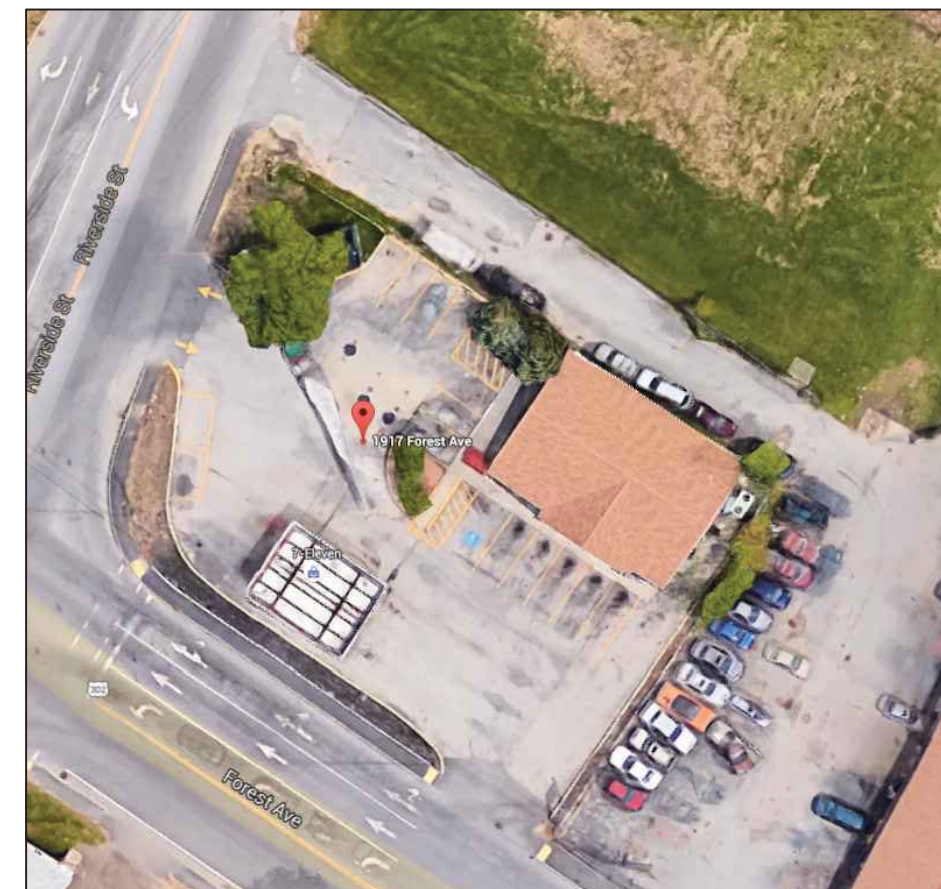
7-11 #32541
1917 FOREST AVE
PORTLAND, ME 04103

FUELING CANOPY COVER SHEET AND INDEX

VICINITY MAP



SITE LOCATION MAP



PROJECT DATA

BUILDING CODE: 2009 INTERNATIONAL BUILDING CODE
 MECHANICAL CODE: 2009 INTERNATIONAL ENERGY CONSERVATION CODE
 PLUMBING CODE: 2010 MAINE STATE PLUMBING CODE
 ELECTRICAL CODE: 2009 NFPA 70
 FIRE CODE: 2009 NFPA 1
 FUEL GAS CODE: 2009 NFPA 30

NFPA 30 FLAMMABLE AND COMBUSTIBLE LIQUIDS CODE-2008 EDITION
 NFPA 30A CODE FOR MOTOR FUEL DISPENSING FACILITIES AND REPAIR GARAGES-2008 EDITION
 NFPA 1 UNIFORM FIRE CODE HANDBOOK

SUMMARY OF WORK

- GRADING AND SITEWORK.
- ASSOCIATED UNDERGROUND TANKS AND PIPING.
- FUELING STATION DESCRIPTION:
 - (2) NEW GILBARCO 3-1 DISPENSERS FOR DIESEL
 - (1) 10' DIA. 20K GAL. DW FIBERGLASS UST FOR UNLEADED FUEL
 - (1) 10' DIA. 20K GAL. SPLIT DW FIBERGLASS UST - 12K DIESEL/8K PREMIUM
 - (2) 1.5 hp FIXED SPEED STP FOR RUL AND PUL
 - (1) 1.5 hp FIXED SPEED STP FOR DIESEL
 - (3) ATG's (1 PER STP SUMP)
 - (3) PRODUCT FILL SUMPS (1 EACH UST)
 - 3' OVER 2" DW FRP PRODUCT PIPING FOR RUL, PUL AND DIESEL FUELS
 - 2' SW FRP VENT PIPING (UST's TO REMOTE VENT SUMP)
 - (1) NEW BRAVO VENT BOX FOR RUL, PUL AND DIESEL
 - (1) NEW 36'-0" X 24'-0" FUELING CANOPY FOR TWO (2) DISPENSERS
 - (1) EMERGENCY SHUT OFF SWITCH

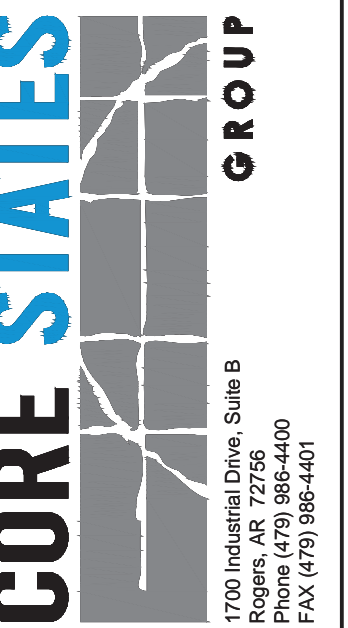
PROJECT DIRECTORY

OWNER: 7-ELEVEN INC.
3200 HACKBERRY ROAD
IRVING, TX 75063

MEP ENGINEER: CORE STATES GROUP
1700 INDUSTRIAL DRIVE, SUITE B
ROGERS, AR 72756
CONTACT: DAVID LEIFFER
479.986.4400
DLEIFFER@CORE-ENG.COM

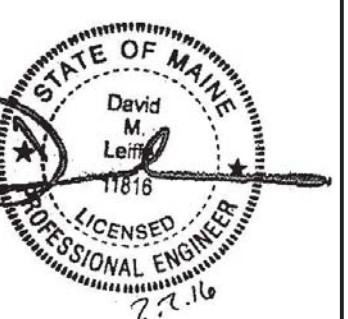
REFERENCE SYMBOLS

- | | | | |
|--|------------------------------|----------|-----------------------------------|
| | - NORTH ARROW | XXXXXXXX | - ROOM TAG |
| | - HEIGHT ELEVATION INDICATOR | XXX | - REVISION DELTA |
| | - DOOR TAG | | - SPOT ELEVATION INDICATOR |
| | - ENLARGED DETAIL INDICATOR | XX | - KEY NOTE INDICATOR |
| | - GRID LINE INDICATOR | XX | - FINISH INDICATOR |
| | - WINDOW TAG | | - SECTION CUT INDICATOR |
| | - WALL TAG | XX.X | - ELEVATION INDICATOR |
| | | XXX | - EQUIPMENT TAG (FOR LIST REF G7) |



Job#: SEI-16380.0222
Scale: AS NOTED
Date: 01/21/16
Drawn By: JMR
Checked By: CPS

Documents prepared by Core States Group are to be used only for the specific project for which they are intended. Any extension of use to other projects, by owner or otherwise, without the written consent of Core States Group is prohibited. Core States Group is not responsible for any claims or losses resulting from the use of these documents for any other project than that specifically intended. User will hold Core States Group harmless from all claims and losses.



SHEET: **GO**
FUELING - USA