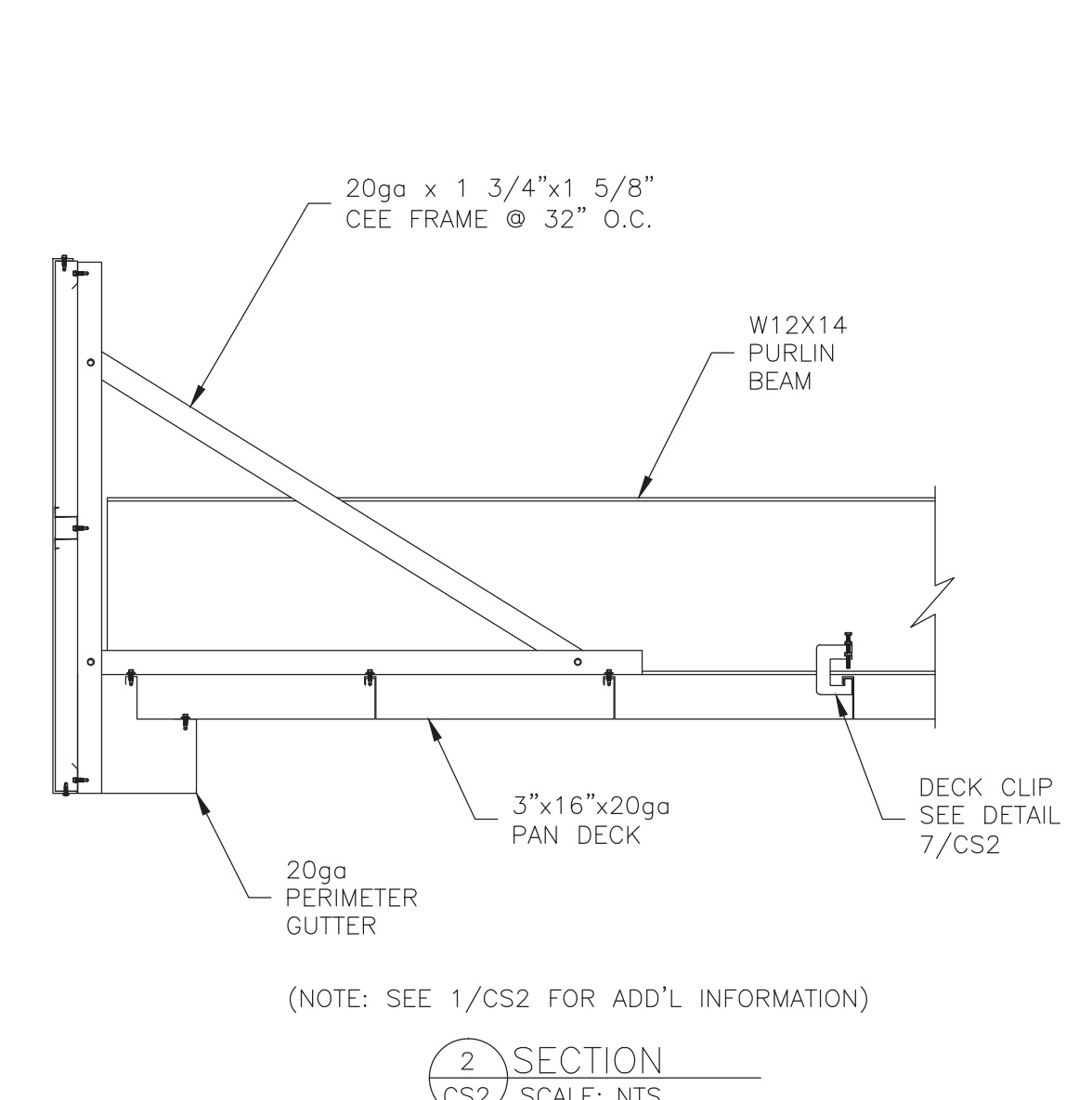
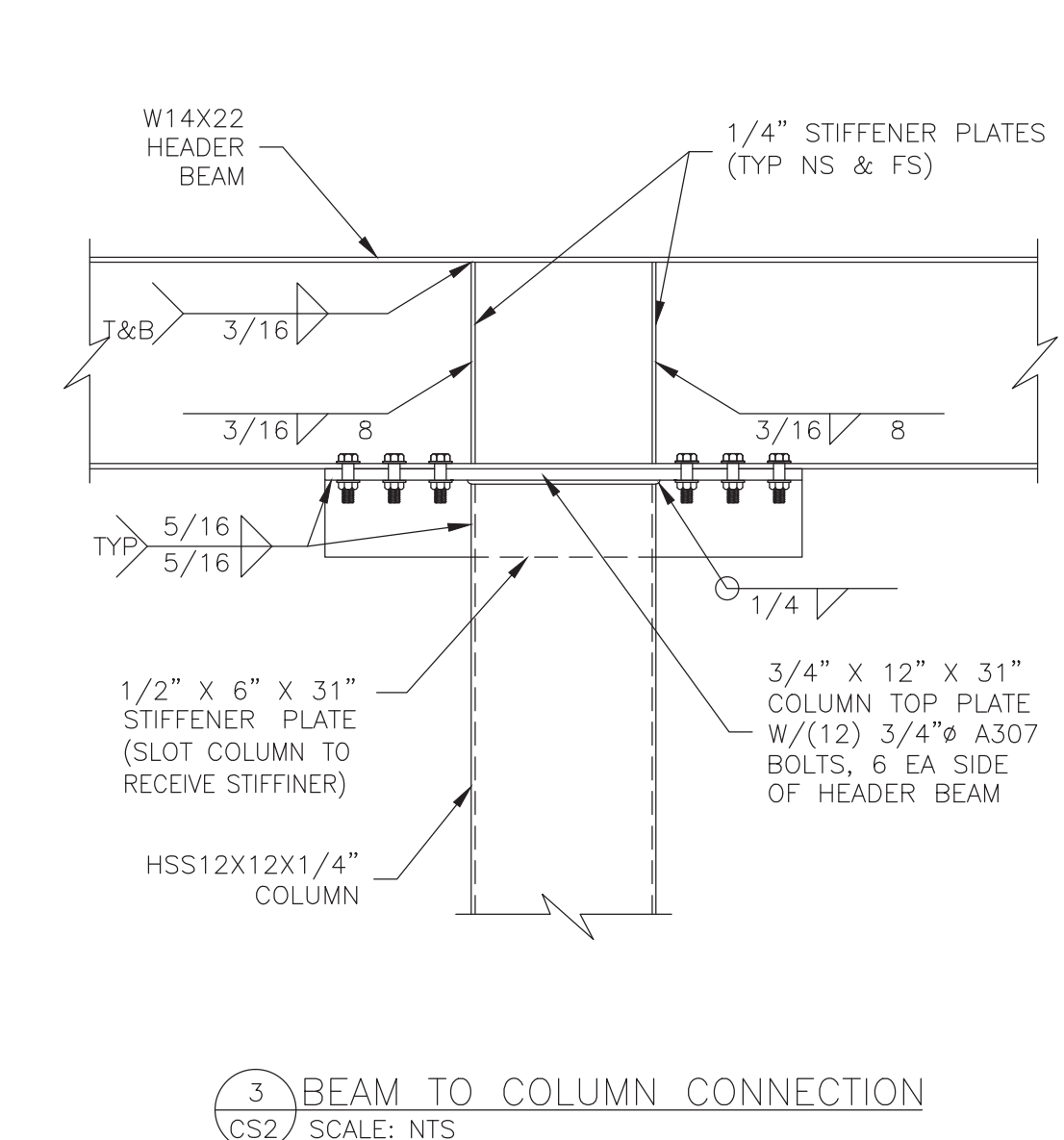


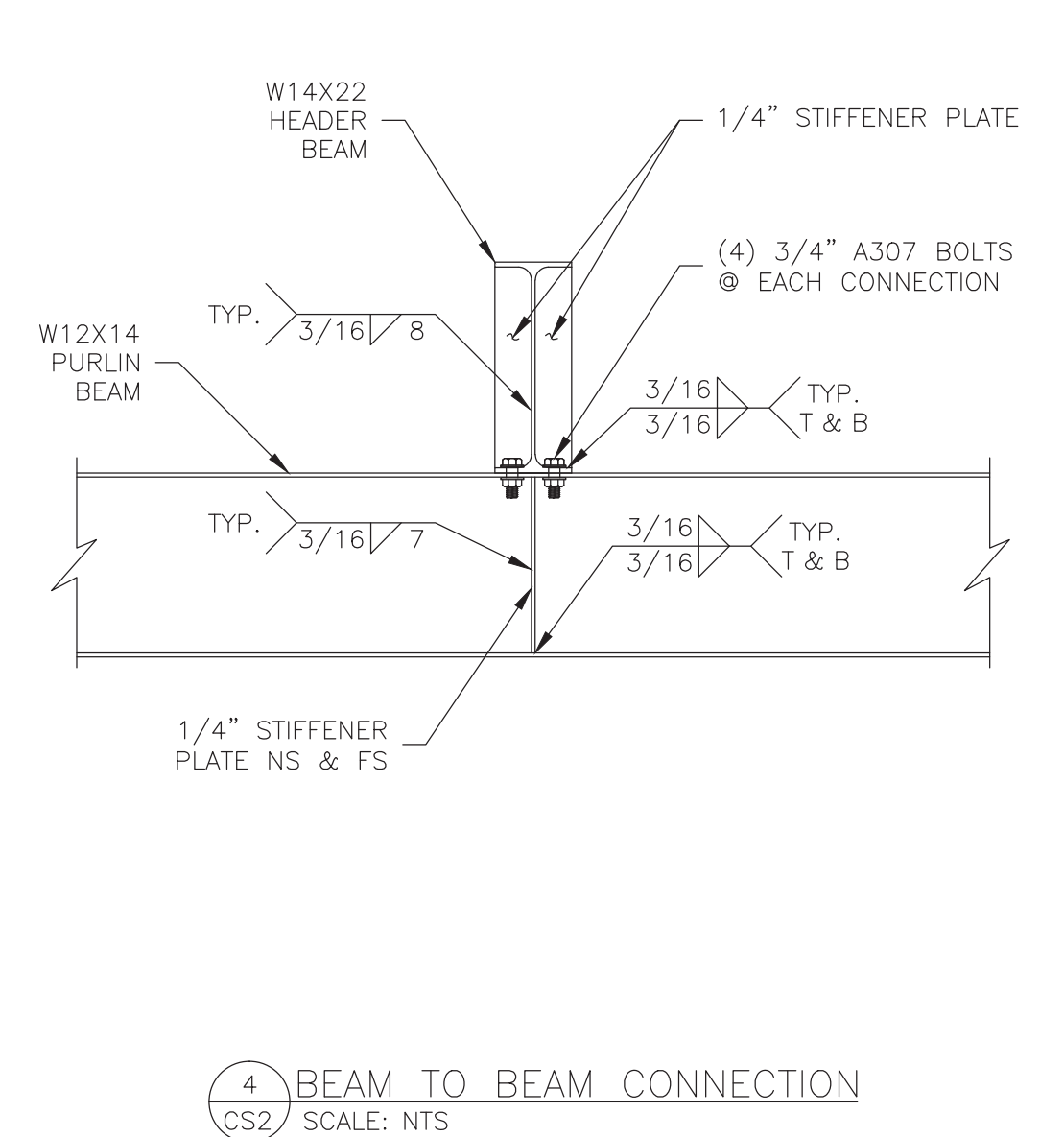
1 SECTION  
CS2 SCALE: NTS



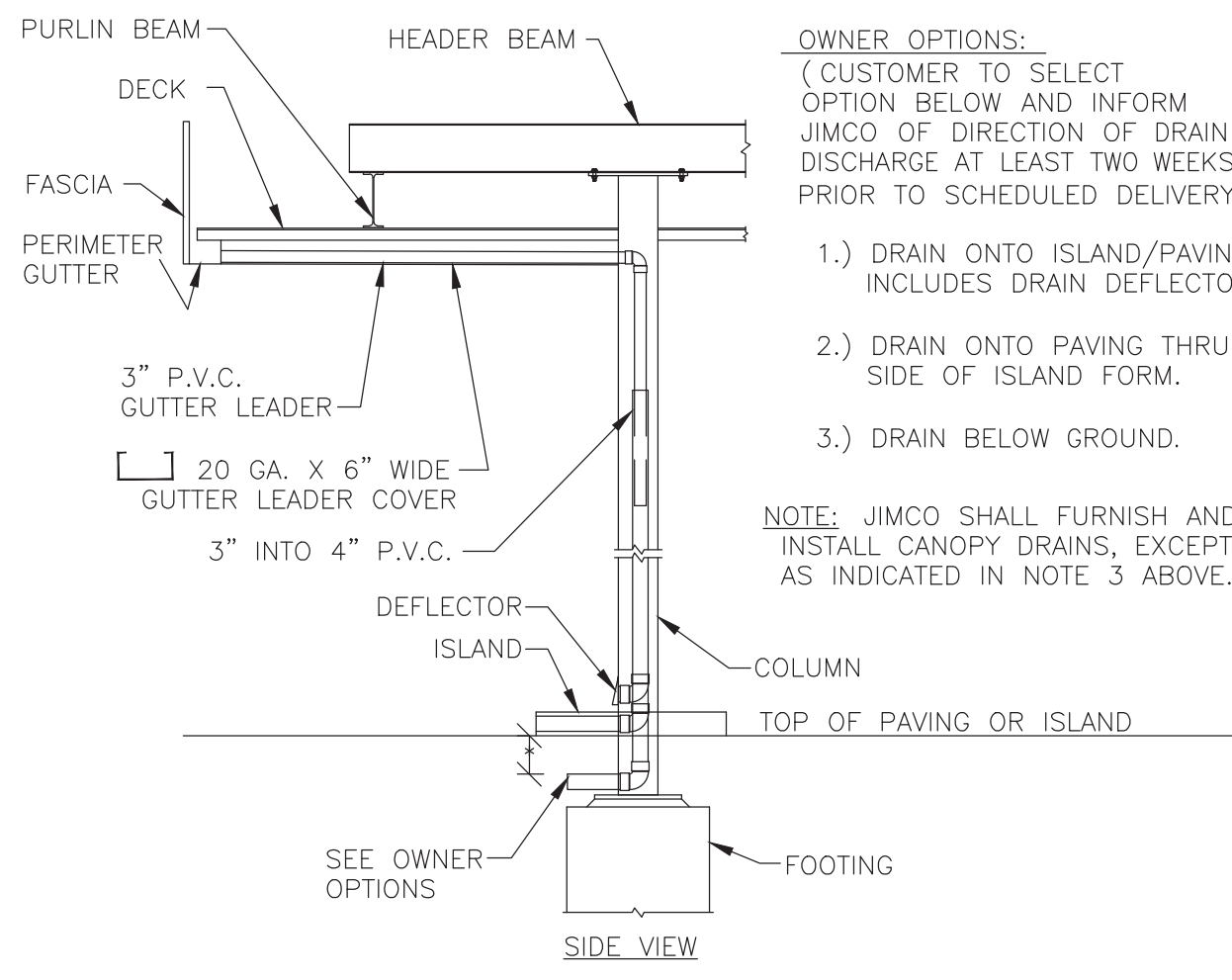
2 SECTION  
CS2 SCALE: NTS



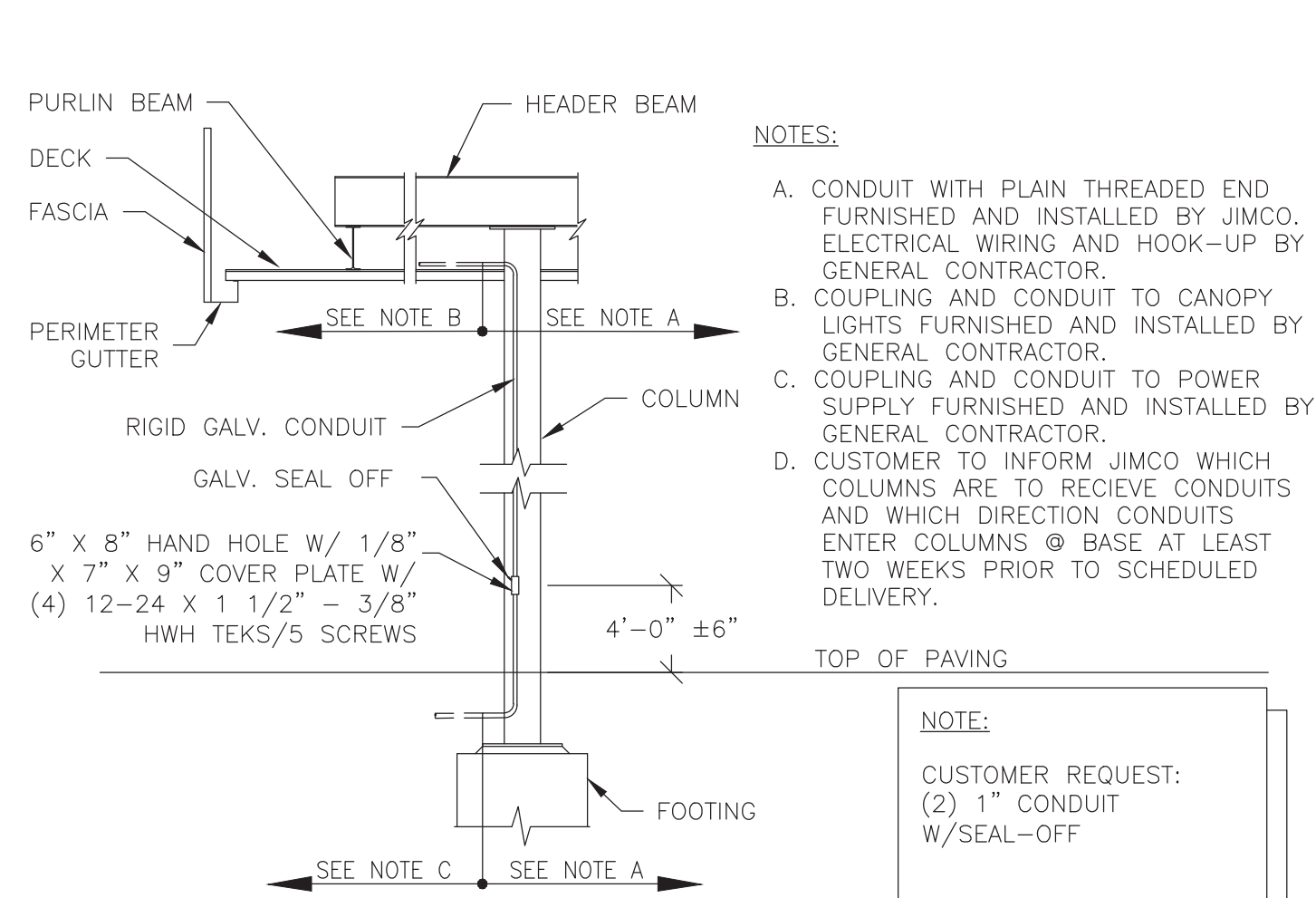
3 BEAM TO COLUMN CONNECTION  
CS2 SCALE: NTS



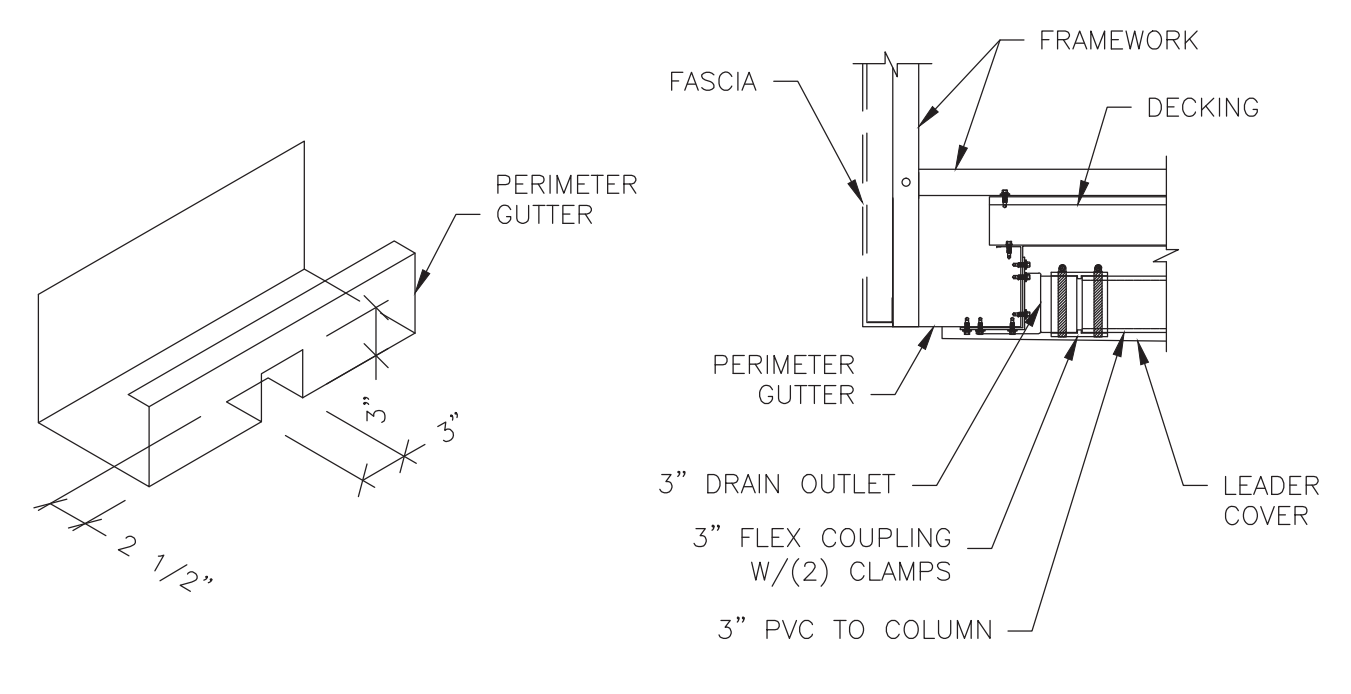
4 BEAM TO BEAM CONNECTION  
CS2 SCALE: NTS



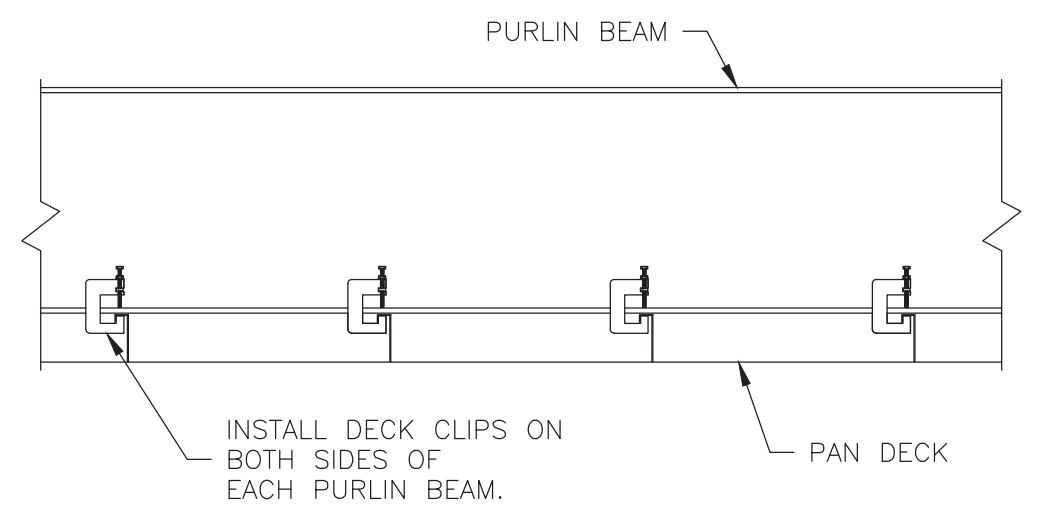
5 INTERNAL DRAIN DETAIL  
CS2 SCALE: NTS



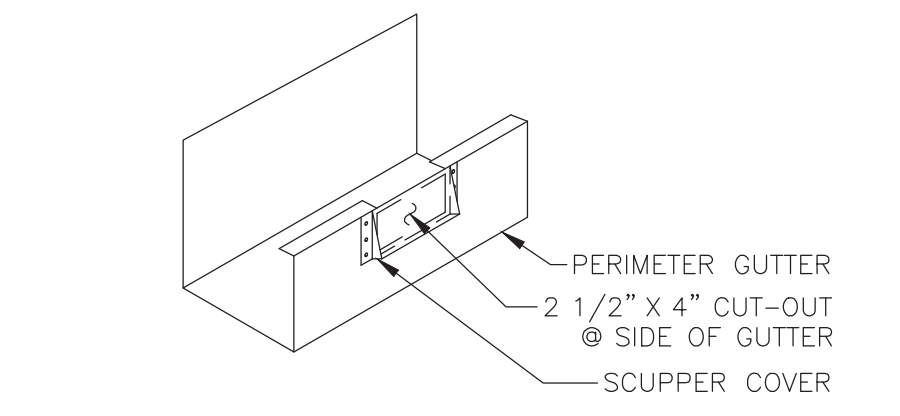
5 TYPICAL INTERNAL CONDUIT DETAIL  
CS2 SCALE: NTS



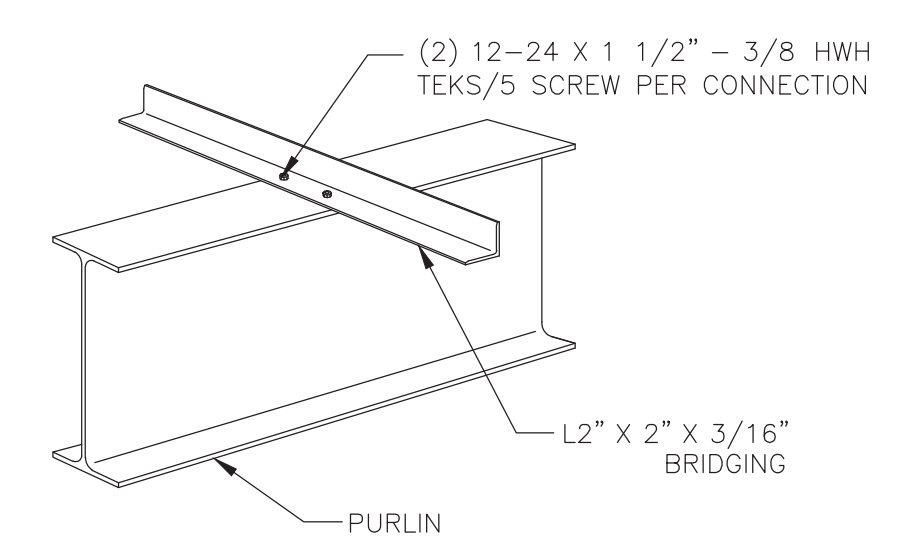
6 LEADER CONNECTION DETAIL  
CS2 SCALE: N.T.S



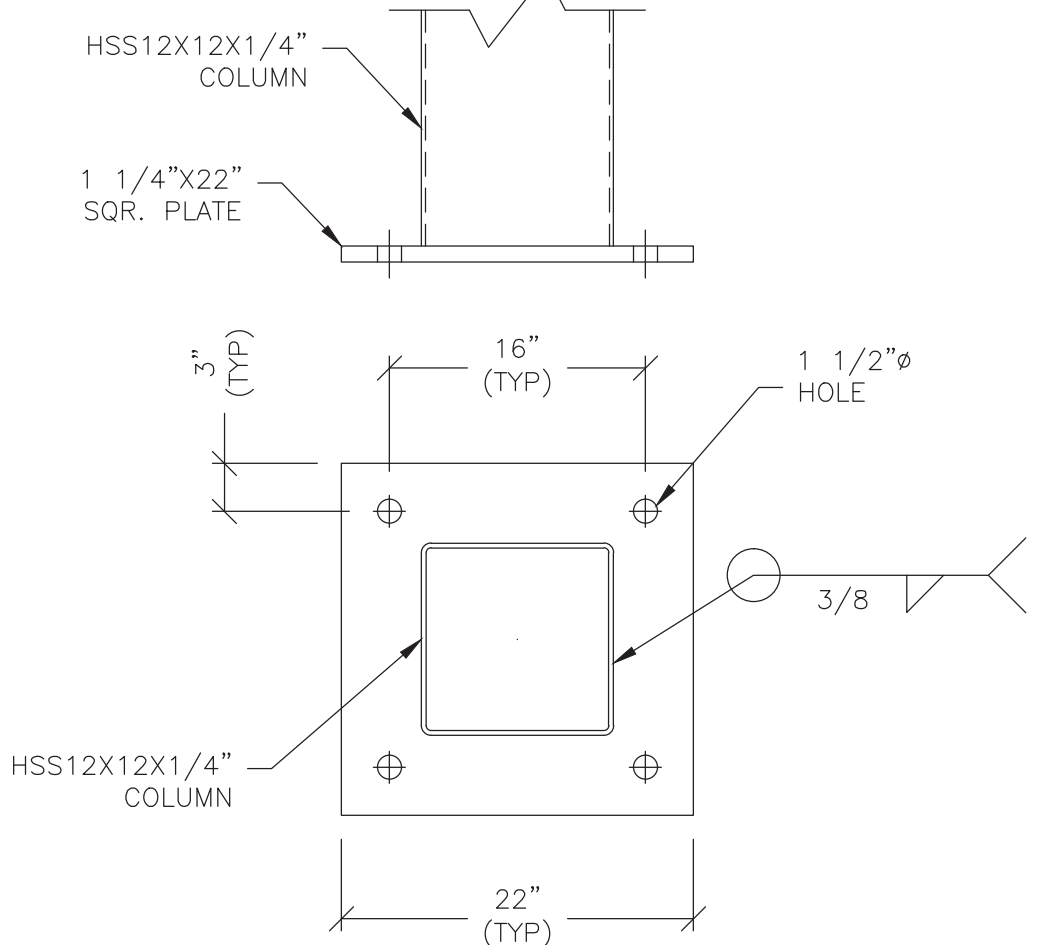
7 DECK CLIP DETAIL  
CS2 SCALE: NTS



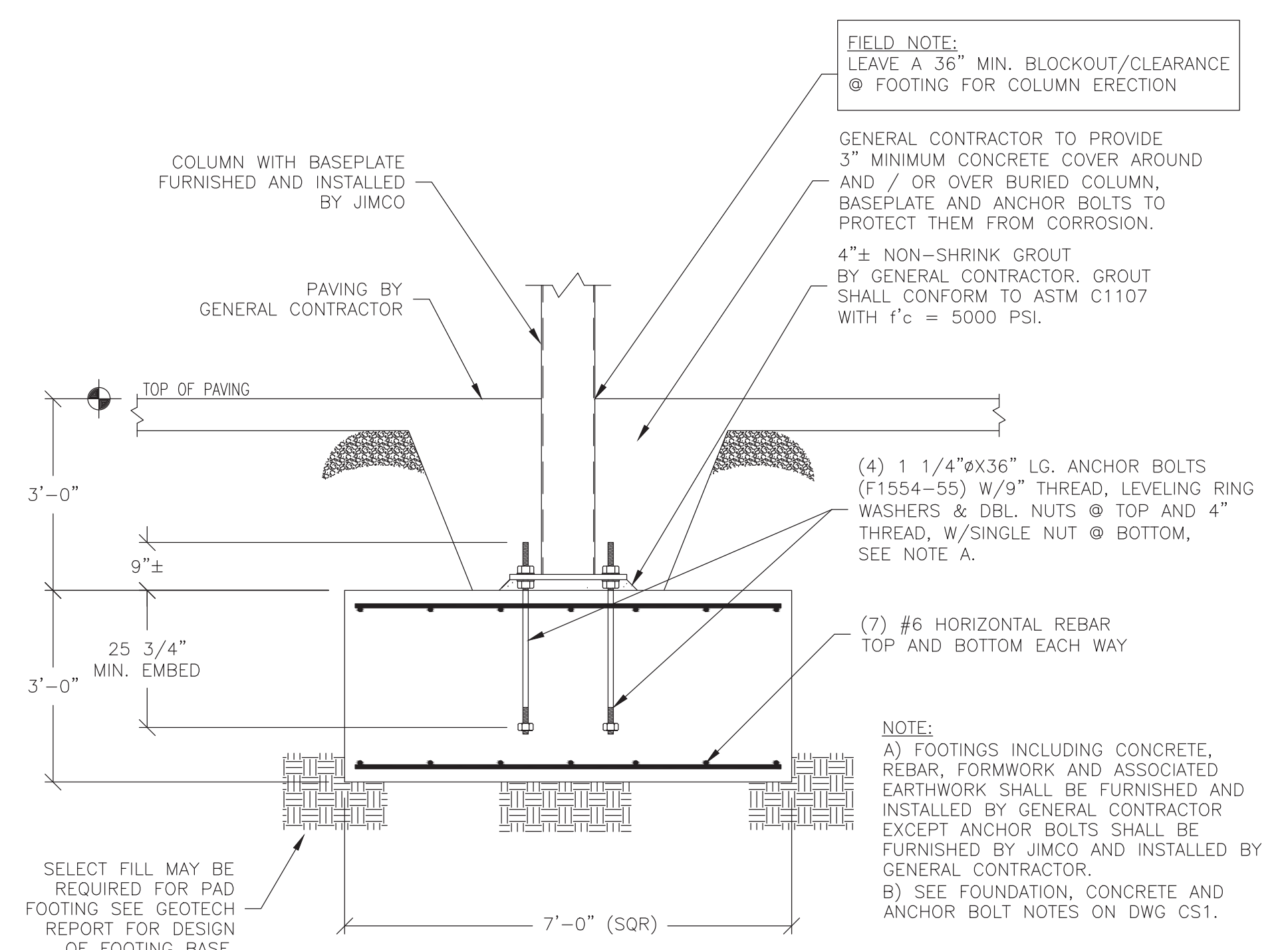
A OVERFLOW SCUPPER DETAIL  
CS2 SCALE: N.T.S



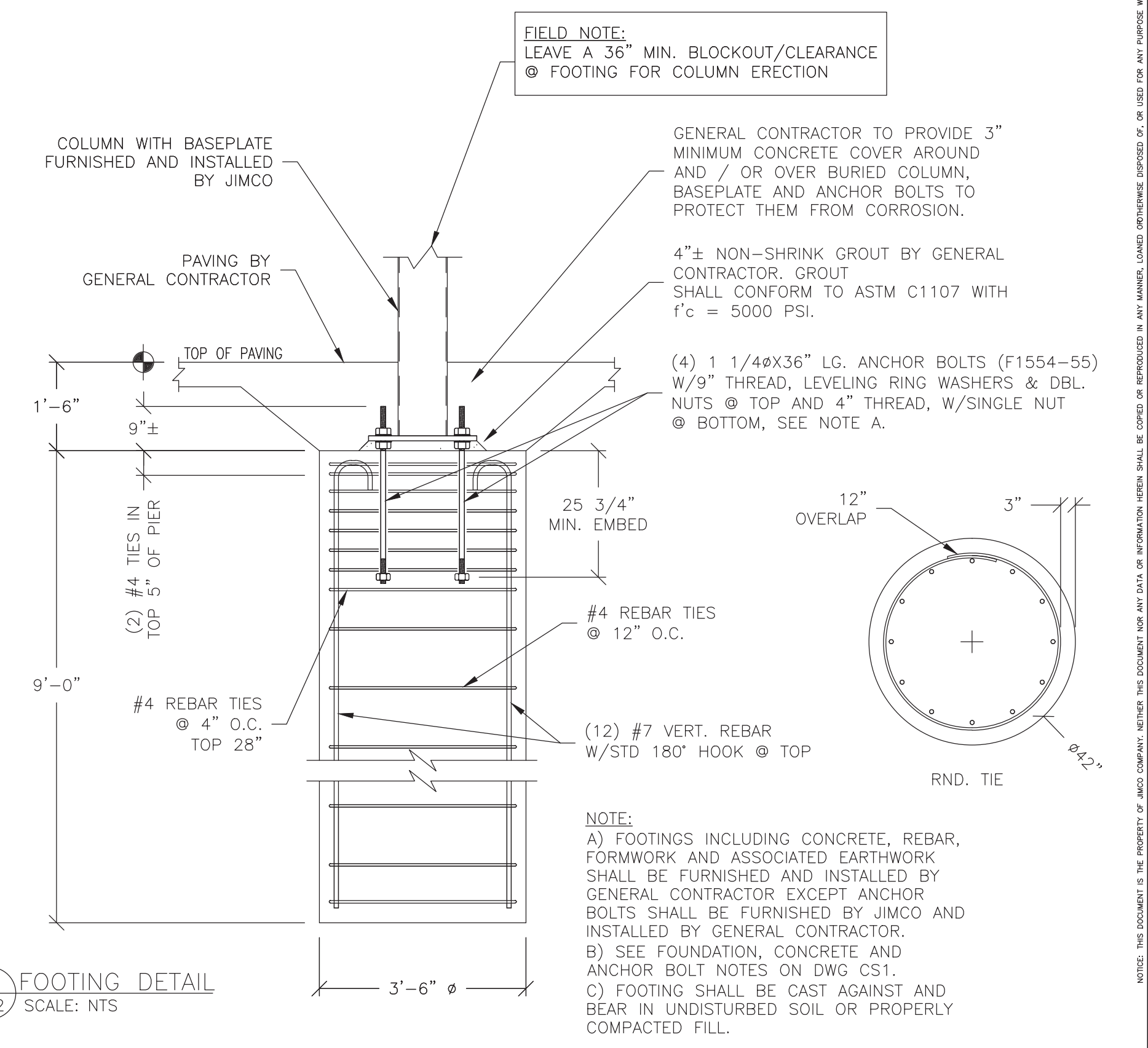
B BRIDGING CONNECTION DETAIL  
CS2 SCALE: N.T.S.



C BASE PLATE DETAIL  
CS2 SCALE: NTS



D OPTIONAL FOOTING DETAIL  
CS2 SCALE: NTS



E FOOTING DETAIL  
CS2 SCALE: NTS

- NOTES:
- CONDUIT WITH PLAIN THREADED END FURNISHED AND INSTALLED BY JIMCO. ELECTRICAL WIRING AND HOOK-UP BY GENERAL CONTRACTOR.
  - COUPLING AND CONDUIT TO CANOPY LIGHTS FURNISHED AND INSTALLED BY GENERAL CONTRACTOR.
  - COUPLING AND CONDUIT TO POWER SUPPLY FURNISHED AND INSTALLED BY GENERAL CONTRACTOR.
  - CUSTOMER TO INFORM JIMCO WHICH COLUMNS ARE TO RECEIVE CONDUITS AND WHICH DIRECTION CONDUITS ENTER COLUMNS @ BASE AT LEAST TWO WEEKS PRIOR TO SCHEDULED DELIVERY.

NOTE:  
CUSTOMER REQUEST:  
(2) 1\"/>

FIELD NOTE:  
LEAVE A 36\"/>

FIELD NOTE:  
LEAVE A 36\"/>

GENERAL CONTRACTOR TO PROVIDE 3\"/>

GENERAL CONTRACTOR TO PROVIDE 3\"/>

(4) 1 1/4\"/>

(4) 1 1/4\"/>

NOTE:  
A) FOOTINGS INCLUDING CONCRETE, REBAR, FORMWORK AND ASSOCIATED EARTHWORK SHALL BE FURNISHED AND INSTALLED BY GENERAL CONTRACTOR EXCEPT ANCHOR BOLTS WHICH SHALL BE FURNISHED BY JIMCO AND INSTALLED BY GENERAL CONTRACTOR.  
B) SEE FOUNDATION, CONCRETE AND ANCHOR BOLT NOTES ON DWG CS1.  
C) FOOTING SHALL BE CAST AGAINST AND BEAR IN UNDISTURBED SOIL OR PROPERLY COMPACTED FILL.