

GENERAL NOTES

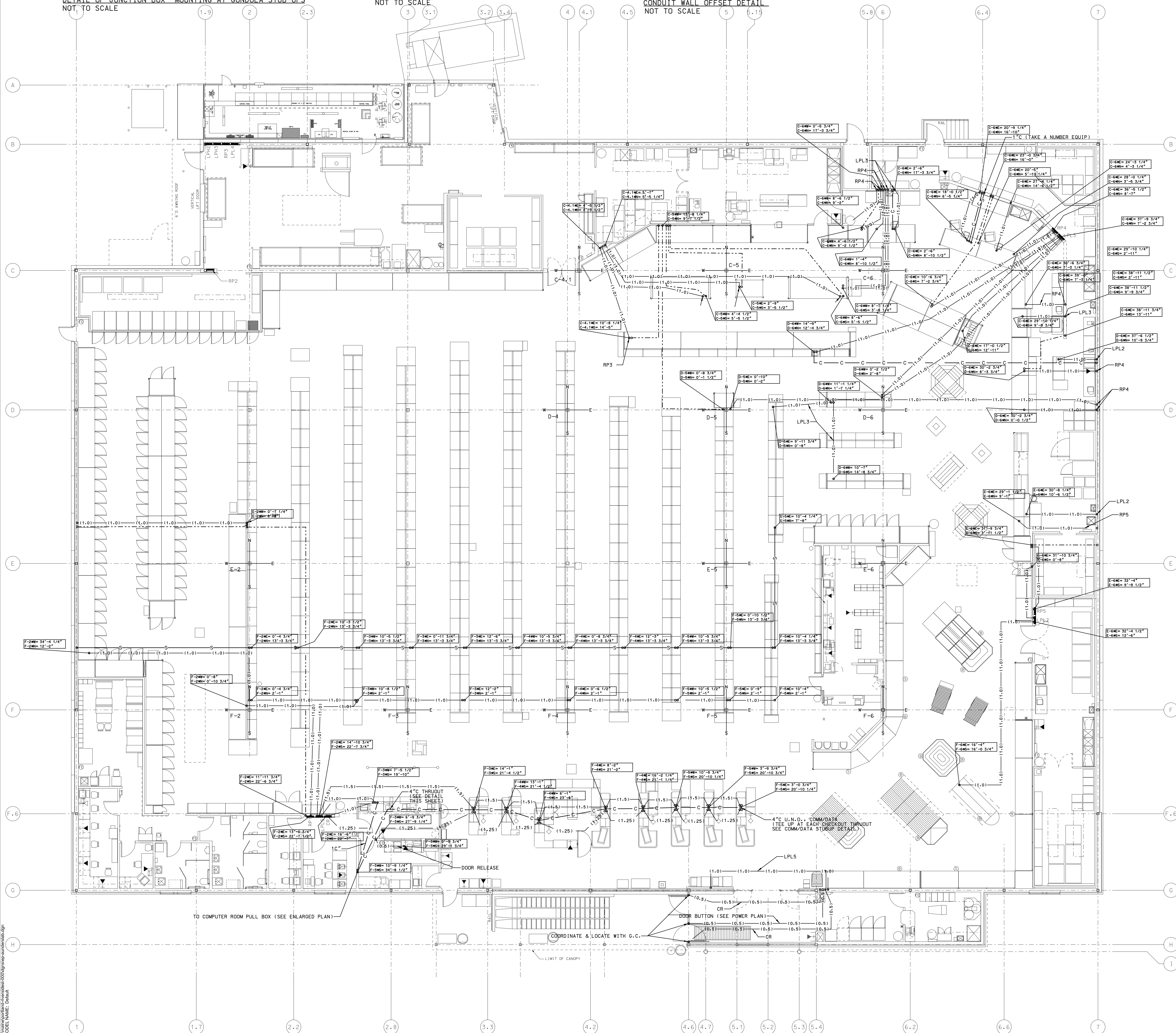
SEE ELECTRICAL DETAIL PLAN FOR CONDUIT WALL OFFSET DETAIL FOR ELECTRICAL ROUTING IN WALLS BETWEEN SALES FLOOR AND DEPARTMENTS.
 ALL UNDERSLAB CONDUIT TO BE 1" PVC UNLESS OTHERWISE NOTED AND TO LOCATION INDICATED ON PLAN. LEAVE EXTRA PULL CORD IN CONDUIT TO GONDOLAS.
 EC TO MAINTAIN A MIN ELECTRICAL STUB UP DISTANCE OF 12" FROM REFRIGERATION PIT STUB UPS.

- (1.5)---(1.5)--- ELECTRICAL CONDUIT (X.X) INDICATES SIZE
- BAS UNDERSLAB CONDUIT SHALL BE 1/2" UON (EC TO INSTALL W/PULLCORD)
- C---C--- COMM/DATA UNDERSLAB CONDUIT U.N.D. (EC TO CONTINUE CONDUIT RUN TO COMPUTER ROOM AND INSTALL W/PULLCORD). TELEPHONE LINES TO BE PULLED AT THE SAME TIME AS COMM/DATA LINES THRU CHECKOUT UNDERSLAB CONDUIT.
- SPECIAL UNDERSLAB CONDUIT (SPARE. EC TO INSTALL W/PULLCORD)
- PHONE LINE UNDERSLAB CONDUIT U.N.D. (EC INSTALL W/PULLCORD)

DETAIL OF JUNCTION BOX MOUNTING AT GONDOLA STUB-UPS NOT TO SCALE

COMM/DATA CHECK-OUT STUB-UP DETAIL NOT TO SCALE

CONDUIT WALL OFFSET DETAIL NOT TO SCALE



DATE	BY	CHK

DATE	BY	CHK

PROJECT TITLE
 Hannaford
 Riverside Street
 Portland, Maine

SHEET TITLE
 UNDERSLAB PLAN

DESIGN	R. BUTEAU
DRAWN	R. CTR
CHECKED	Digit
PROJ MGR	BCM
DATE	AUGUST, 2004
	© 2004 Hannaford Bros Co

SHEET
E7