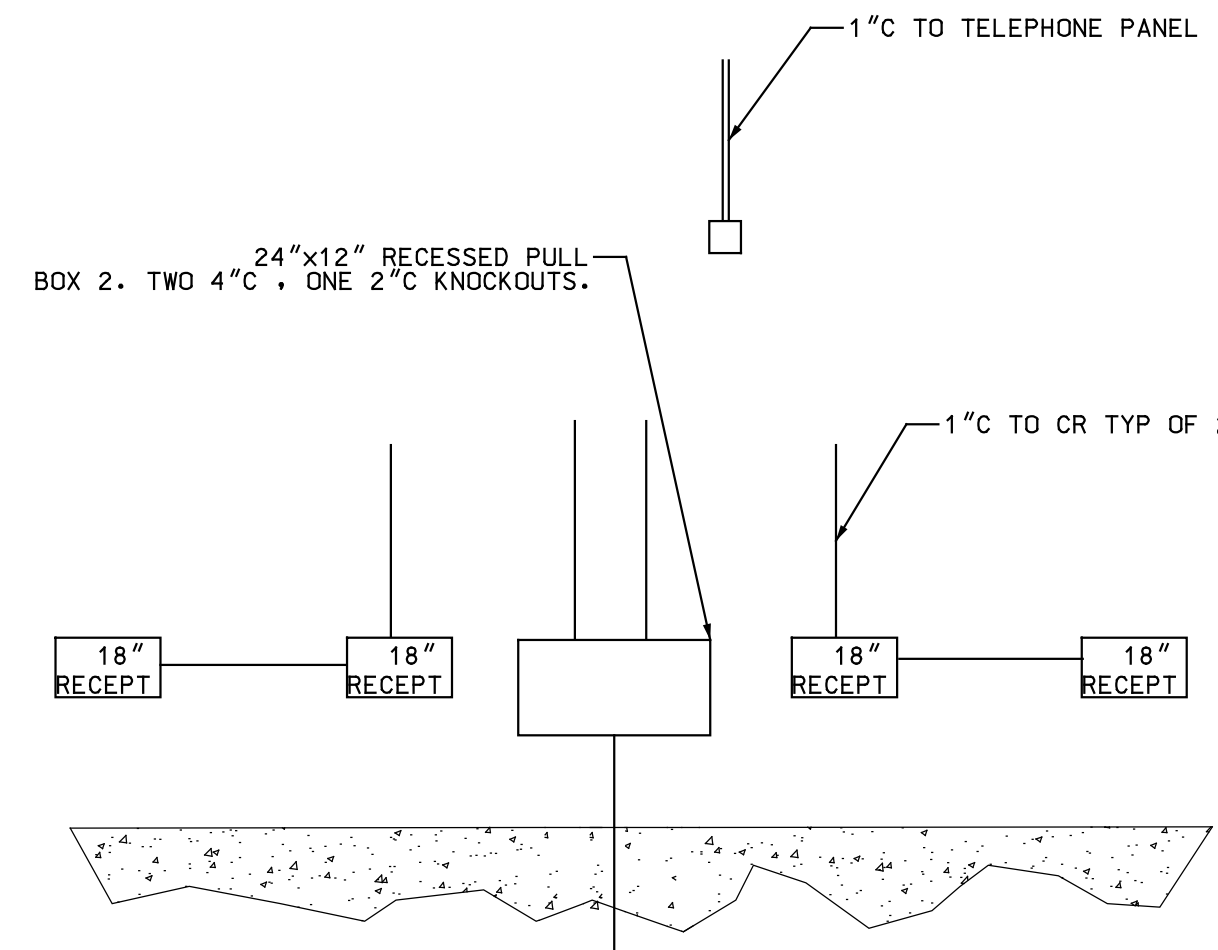
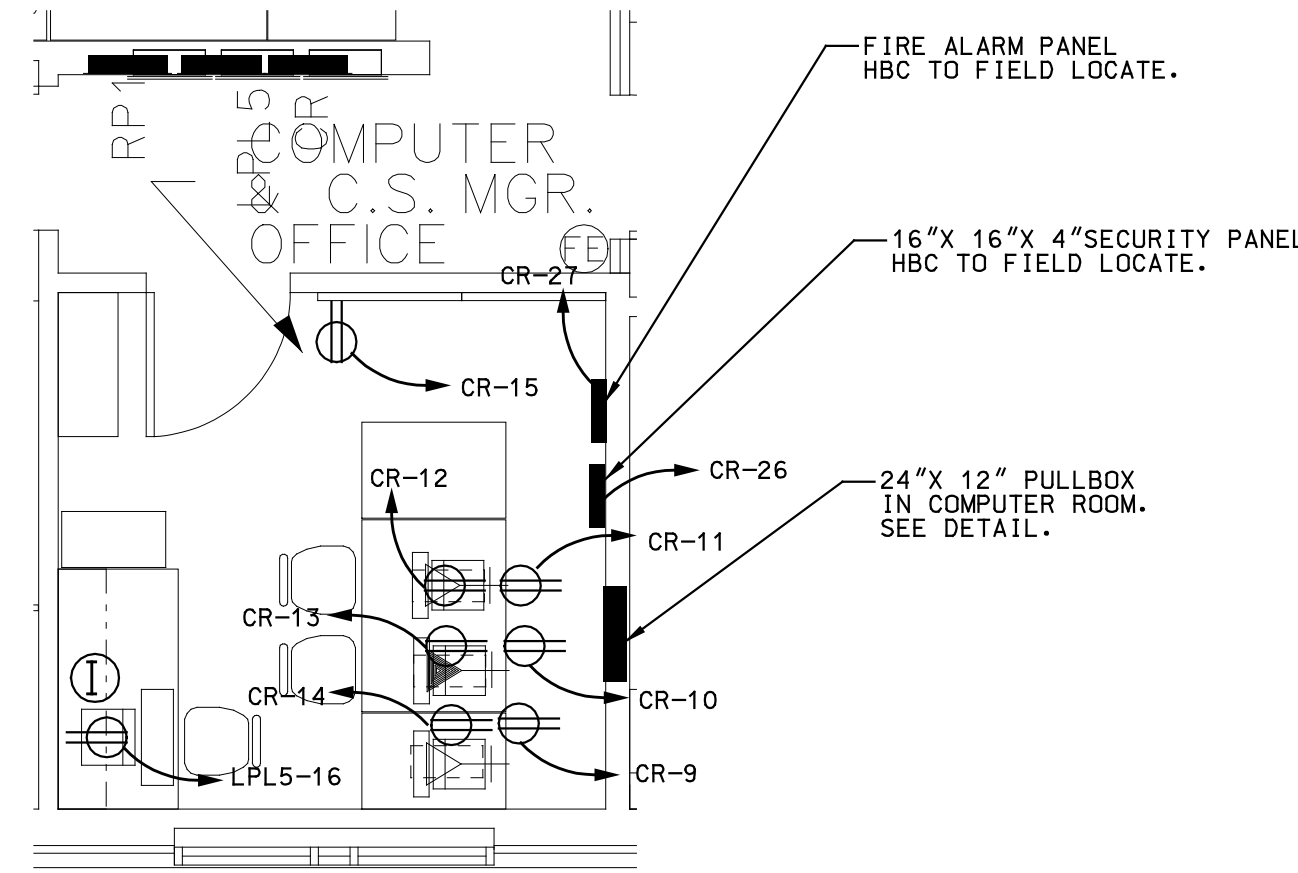


NOTE:
ALL ELECTRICAL OVERHEAD, USE NEOPRENE FOR DROPS TO 4'-0" AFF. ALL OUTLETS TO BE WATERPROOF. VERIFY DROP REQUIREMENTS WITH HANNAFORD BROS.

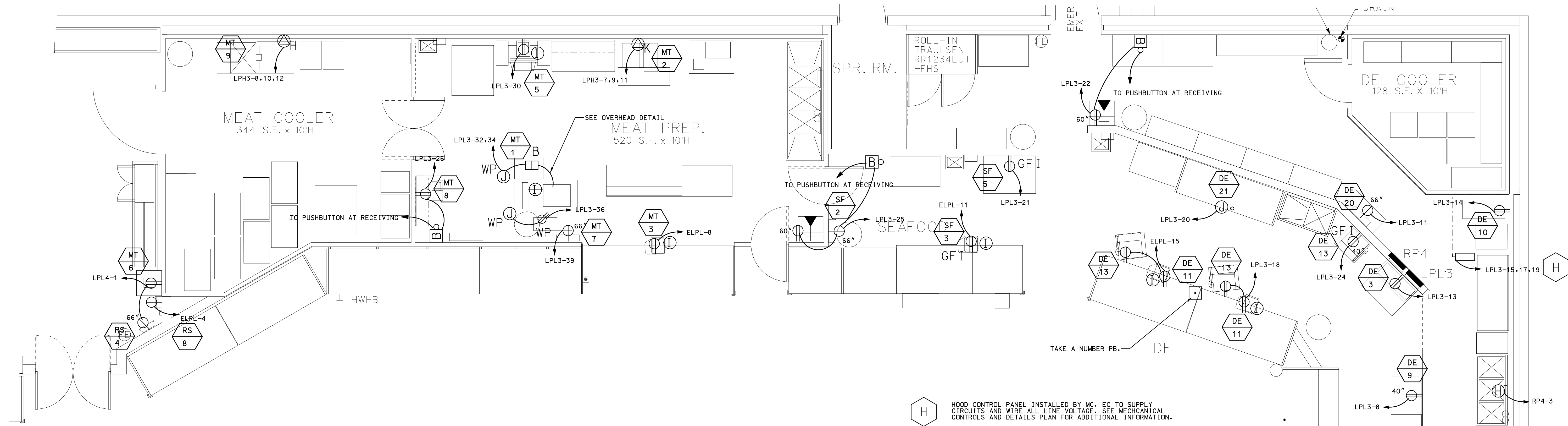
OVERHEAD ELECTRICAL DROPS
NOT TO SCALE



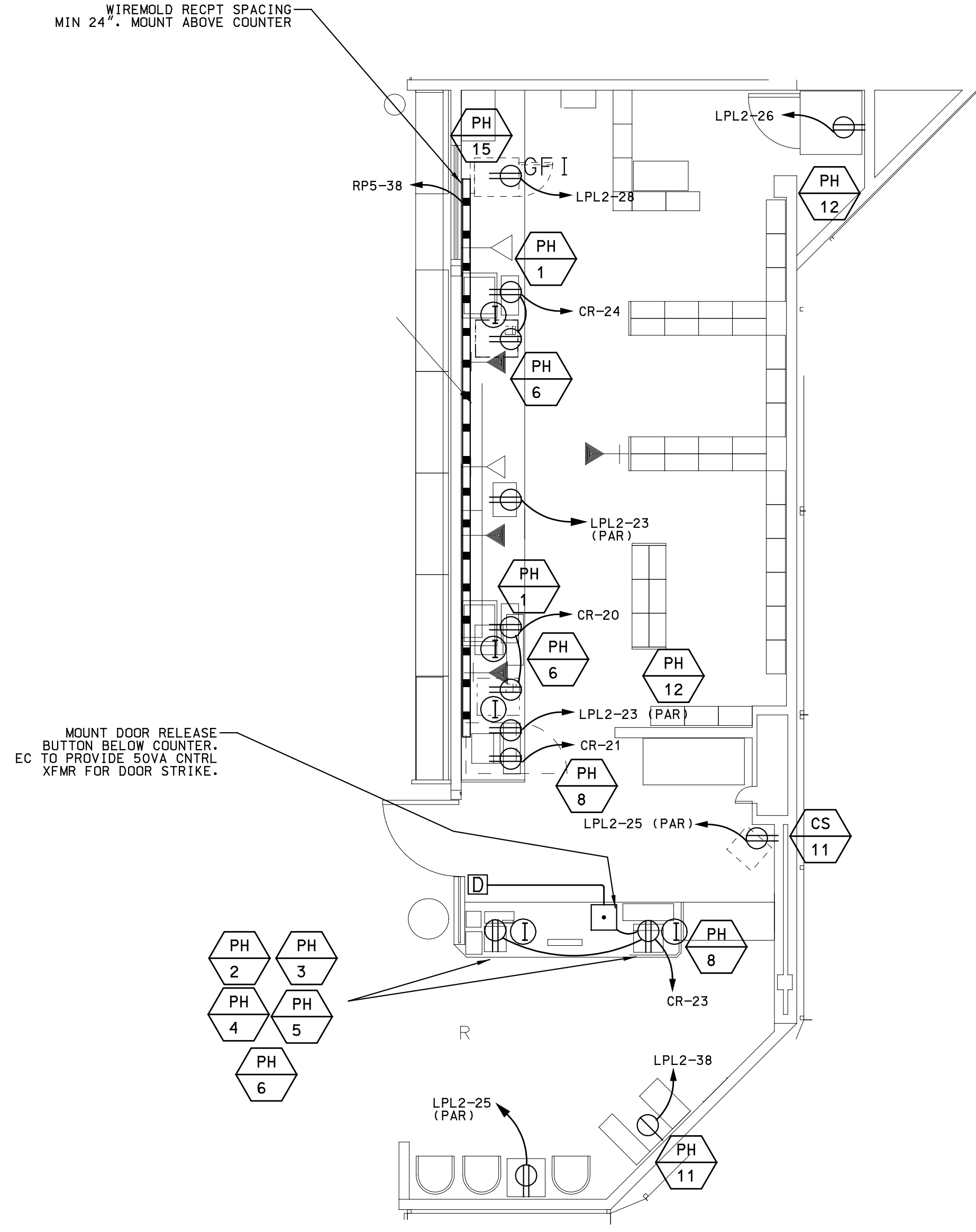
COMPUTER CONDUIT RISER DETAIL
NOT TO SCALE



NOTE: ALL RECEPTACLES IN THIS AREA CIRCUITED FROM PANEL CR SHALL BE TYPE IG RECEPTACLES.



NOTE: ALL RECEPTACLES IN THESE OFFICES EXCEPT FOR CUSTOMER SERVICE COUNTER, SHALL BE MOUNTED AT 44" TO CENTER UNLESS NOTED OTHERWISE. RECEPTACLES CIRCUITED FROM PANEL CR SHALL BE TYPE IG RECEPTACLES AND MOUNTED HORIZONTALLY TO INDICATE EMERGENCY POWER.



NOTE: ALL RECEPTACLES IN PHARMACY SHALL BE MOUNTED BELOW COUNTER UNLESS NOTED OTHERWISE. RECEPTACLES CIRCUITED FROM PANEL CR SHALL BE TYPE IG RECEPTACLES AND MOUNTED HORIZONTALLY TO INDICATE EMERGENCY POWER.

DATE	BY	DESCRIPTION

DATE	BY	DESCRIPTION

PROJECT TITLE
**Hannaford
Riverside Street
Portland, Maine**

SHEET TITLE
ENLARGED PLAN

DESIGN	14" = 1'-0"	R. BUTEAU
DRAWN	R. CTR	R. BUTEAU
CHECKED	Digit	Digit
PROJECT MGR	BCM	BCM
DATE	AUGUST, 2004	
		© 2004 Hannaford Bros Co