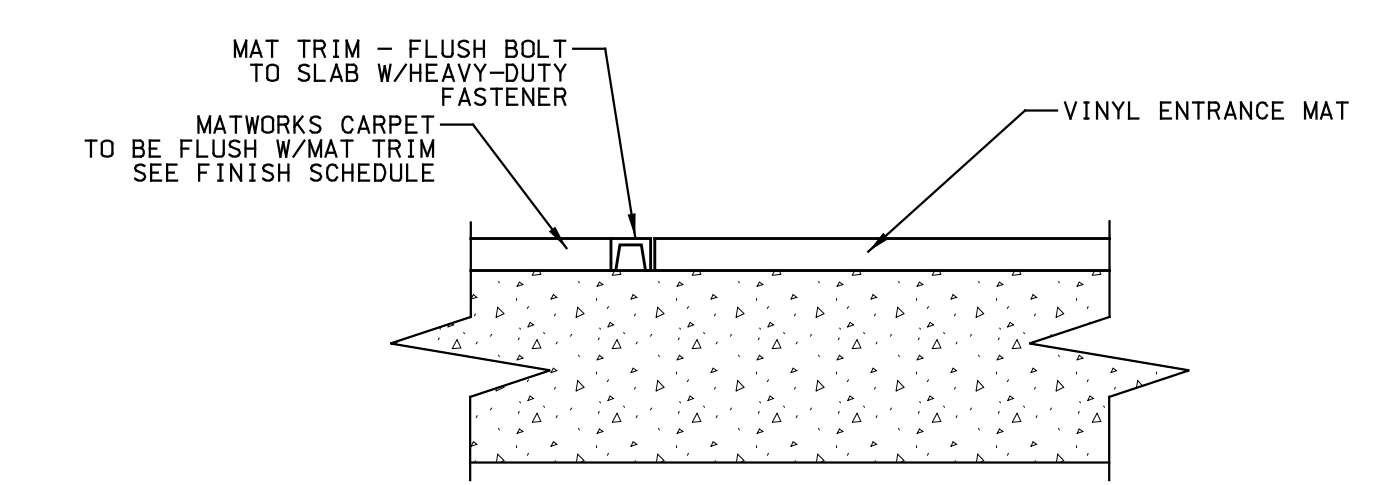
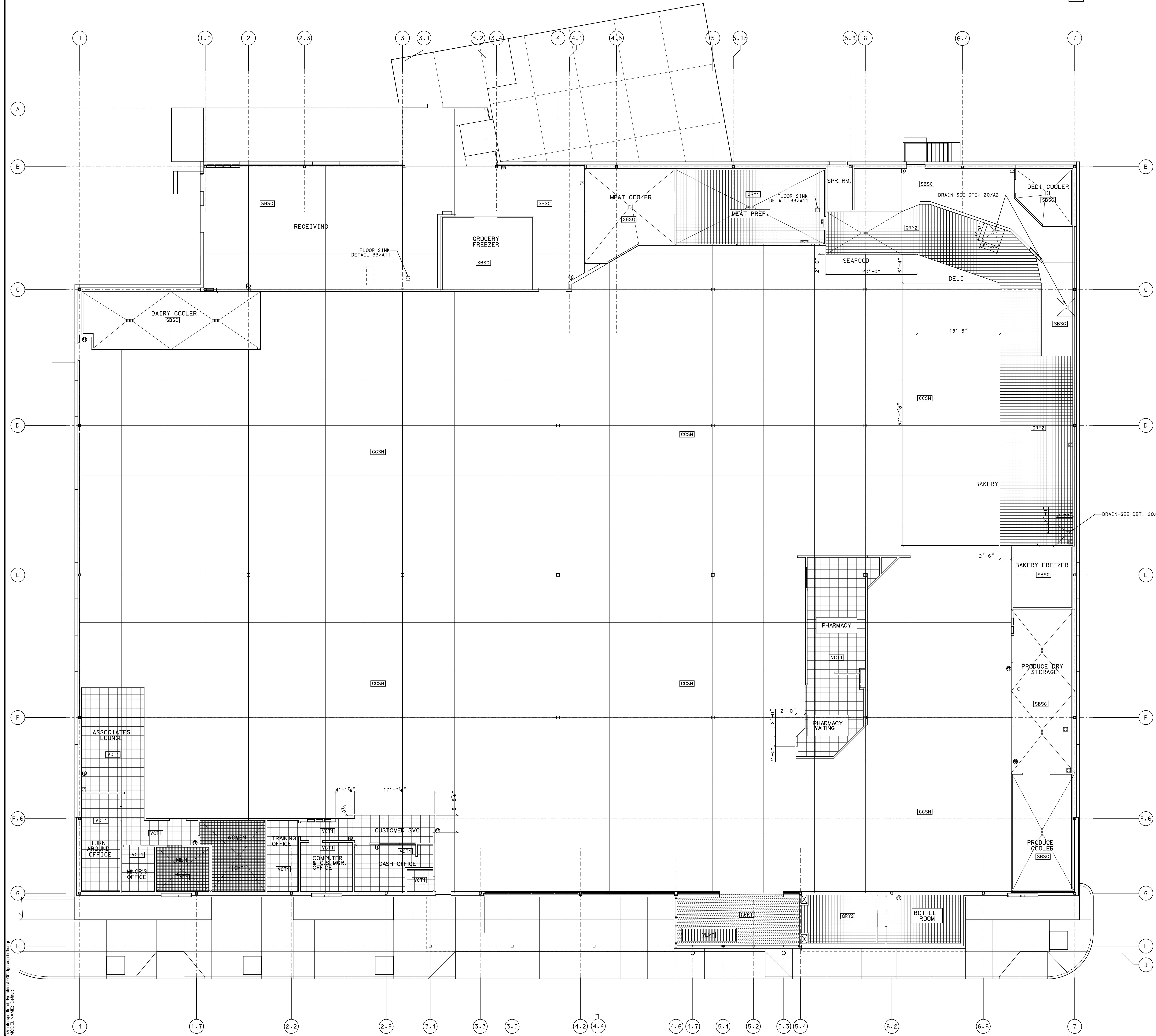


FLOOR FINISH SCHEDULE

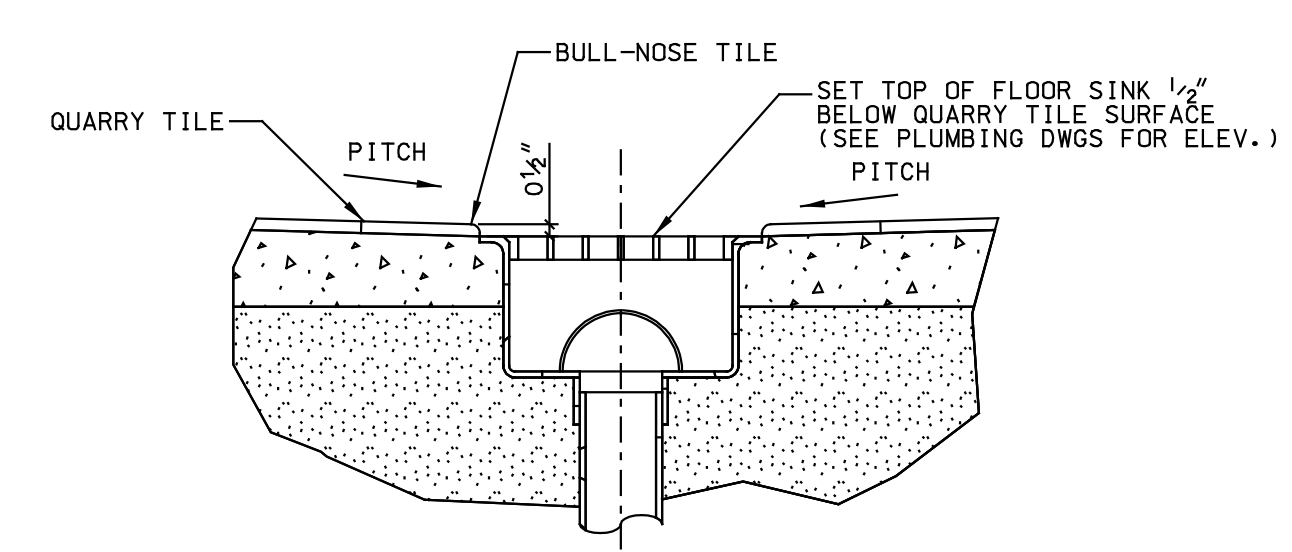
(VCT1)	VINYL COMPOSITE TILE: OFFICES, CUSTOMER SERVICE, PHARMACY, OFFICE, STORAGE	ARMSTRONG - VINYL COMPOSITION TILE #5100 BUTTERCREAM YELLOW- 12" x 12" x 1/4"
(CMT)	CERAMIC MOSAIC TILE: CUSTOMER BATHROOMS	AMERICAN OLEAN - COLOR - C36-CAIRO SAND 2" x 2" 1/4" - CODE BASE - W/ PENETRATING SEALANT, GROUT - G4 - HYDRMENT #5100 SAND BEIGE
(QRYT)	QUARRY TILE: MEAT BUTCHER SHOP	AMERICAN OLEAN - COLOR - N01-LAVA RED ABRASIVE 6" x 6" x 1/4" - UNGLAZED GROUT - G3 - HYDRMENT #5144 BRICK
(QRY2)	QUARRY TILE: DEL 1 - BAKERY, SEAFOOD, & BOTTLE ROOM	AMERICAN OLEAN - COLOR - N03-DESERT 6" x 6" x 1/4" - W/ PENETRATING SEALANT GROUT-G4-HYDRMENT-#0202 SAND BEIGE
(SBSL)	CONCRETE: COOLER/FREEZER, DRY STORAGE	SHOT BLASTED AND SEALED TYPICAL ALL COOLERS/FREEZERS
(SDDC)	SEALED CONCRETE RECEIVING	SEALED CONCRETE
(CCSN)	CONCRETE STAIN:	CONCRETE STAIN COLOR: LITHOCHROME CHEMSTAIN CS-15 AMBER MANUFACTURE: L-L-M, SCOP GLOSSY SEALER - TWO STAINS COMBINED
(CRPT)	CARPET VESTIBULE:	MATWORKS - MODEL - AMBASSADOR- TAC FAST - COLOR: AUTUMN 12" x 12" 1/2" SUPPLIED & INSTALLED BY OWNER (INSTALL TUBED PATTERN OF CARPET @ 45° ALTERNATING EACH CARPET TILE.)
(VLM)	VESTIBULE MAT:	VINYL MATTING COLOR: BLACK MANUFACTURE: MATWORKS POWER LINES SE FRAMED IN GRIDS OF 3'-0" X 3'-0" SEE DETAIL 10/A2

FLOOR FINISH GENERAL NOTES

- REFER TO DRAWINGS A1, S7, AND S8 FOR ADDITIONAL INFORMATION.
- PROVIDE BRASS STRIPS AT TRANSITIONS BETWEEN QUARRY AND OTHER FLOOR FINISHES. QUARRY TILE TO BE FLUSH WITH ADJACENT FLOOR FINISHES.
- PROVIDE REDUCER STRIP AT TRANSITIONS BETWEEN FLOOR FINISH ELEVATIONS.
- FIELD LOCATE AND VERIFY ALL REFRIGERATION PITS.
- PROVIDE STAINLESS STEEL THRESHOLD AT ALL COOLER AND FREEZER DOORS.
- ALL SLAB CONTROL JOINTS SHALL BE CAULKED.
- PROVIDE FLUSH FINISH BETWEEN QUARRY TILE AND STAINED CONCRETE AND VINYL COMPOSITION TILE



10 CARPET TO VINYL MAT TRANSITION
A2 3'-0" x 1'-0"



20 SLOPE FLOOR DRAIN INSTALLATION DETAIL
A2 3'-0" x 1'-0"

DATE	BY
DATE	BY
DATE	BY
DATE	BY
DATE	BY
DATE	BY

Hannaford
Riverside Street
Portland, Maine

FLOOR FINISH PLAN
& DETAILS

DESIGN	K ST PIERRE
DRAWN	K ST PIERRE
CHECKED	DIST
PROJECT MGR	BCM
DATE	AUGUST, 2004
	© 2004 Hannaford Bros Co