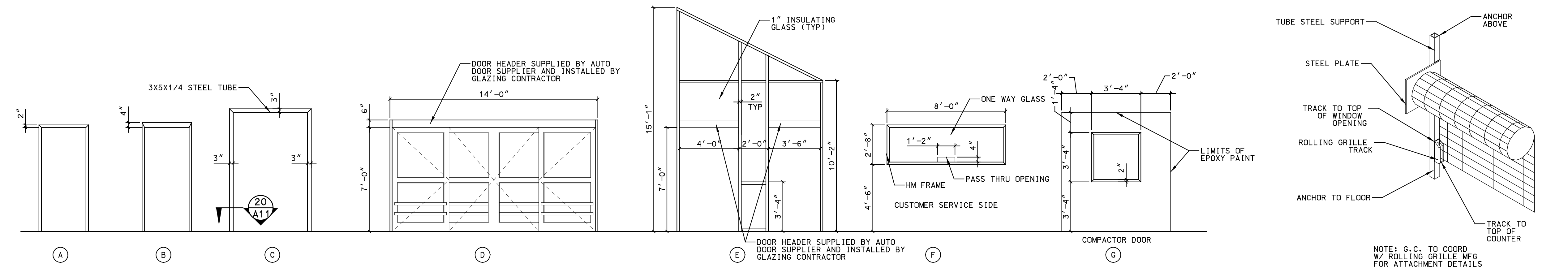
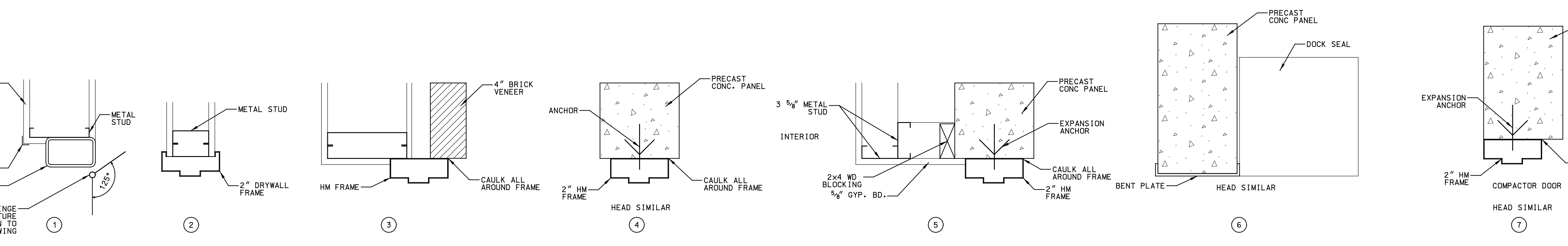


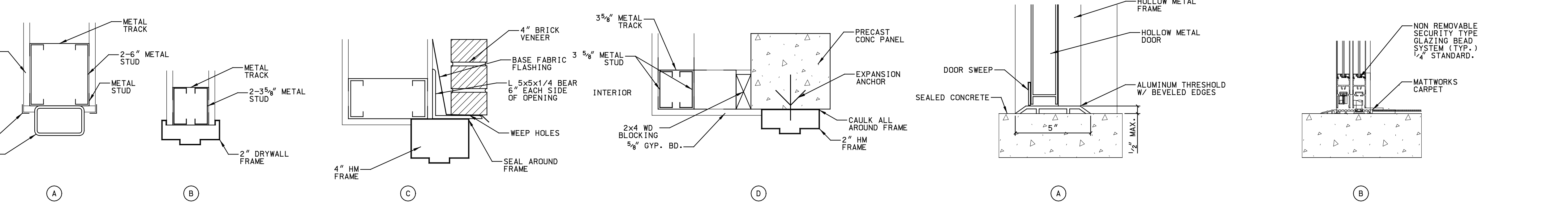
DOOR TYPES  
1/4" = 1'-0"



FRAME TYPES  
1/4" = 1'-0"



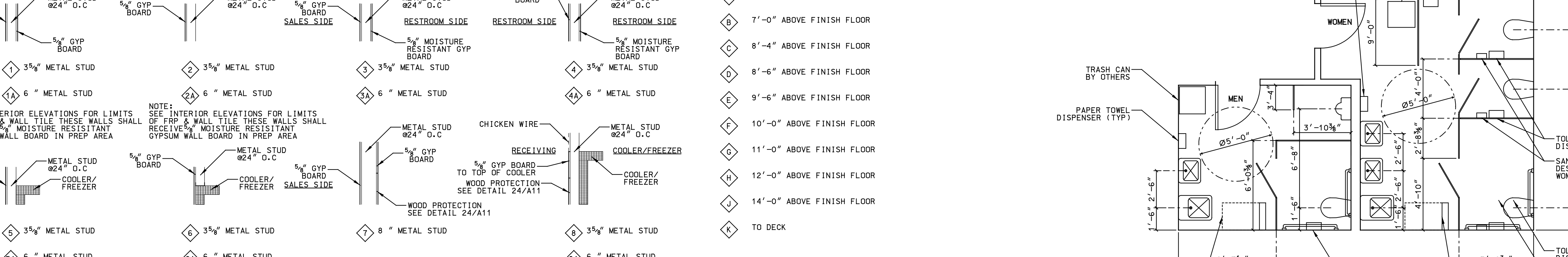
JAMB TYPES  
1/4" = 1'-0"



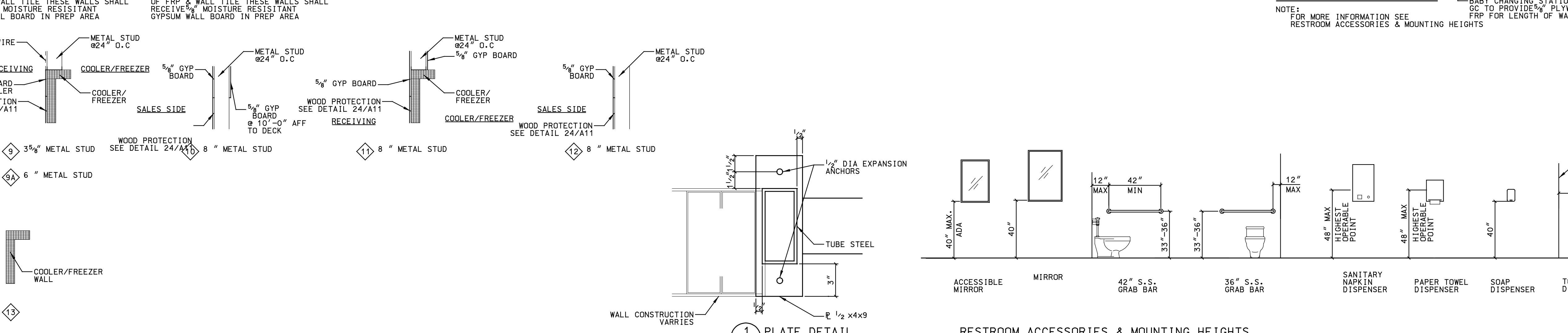
HEAD TYPES  
1/4" = 1'-0"



WALL TYPES  
1/4" = 1'-0"



WALL HEIGHTS  
1/4" = 1'-0"



RESTROOM ACCESSORIES & MOUNTING HEIGHTS  
1/4" = 1'-0"

DOOR SCHEDULE

DOOR NO.	ROOM NAME	DOOR		FRAME			FIRE RATING (HR)	SET NO.	REMARKS	DOOR NO.		
		SIZE W X H X T	MAT	TYPE	JAMB	HEAD					SILL	
1	Automatic Swing-Entry	4'-0" x 7'-0" x 1 1/2"	AL/GL	7	-	-	A	AL	E	-	1	Supplied by Auto Door Contractor
2	Automatic Swing-Exit	3'-0" x 7'-0" x 1 1/2"	AL/GL	7	-	-	A	AL	E	-	2	Supplied by Auto Door Contractor
3	Automatic Slide-Entry	3'-0" x 7'-0" (IPAD)	AL/GL	7	-	-	B	AL	D	-	3	14'-0" Package Width
4	Front Sales Area	3'-0" x 7'-0" x 1 1/2"	HM	1	3	C	B	HM	B	-	4	
5	Exit Sales Area	4'-0" x 7'-0" x 1 1/2"	HM	1	4	-	B	HM	A	-	5	
6	Compactor Door	3'-0" x 3'-0" x 1 1/2"	HM	1	7	-	-	HM	G	1	14	
7	Receiving Area	3'-8" x 7'-0" x 1 1/2"	HM	1	4	-	B	HM	A	-	7	
8	Sprinkler Room	3'-0" x 7'-0" x 1 1/2"	HM	1	4	-	B	HM	A	-	8	
9	Del/Eat	3'-8" x 7'-0" x 1 1/2"	HM	1	5	D	B	HM	A	-	9	
10	Receiving	7'-0" x 8'-0"	STL	5	6	-	-	STL	-	-	10	
11	Receiving	3'-0" x 7'-0" x 1 1/2"	STL	5	6	-	-	STL	-	-	11	
12	M/E Center	3'-0" x 7'-0"	-	-	-	-	-	-	-	-	12	Supplied by Pod Manuf.
13	Restroom	3'-0" x 7'-0" x 1 1/2"	WD	1	2	B	-	HM	A	-	13	
14	Cash Office	3'-0" x 7'-0" x 1 1/2"	WD	2	2	B	-	HM	A	-	14	
15	Computer & C.S. Mgr.	3'-0" x 7'-0" x 1 1/2"	WD	2	2	B	-	HM	A	-	15	
16	Training Office	3'-0" x 7'-0" x 1 1/2"	WD	2	2	B	-	HM	A	-	16	
17	Manager's Office	3'-0" x 7'-0" x 1 1/2"	WD	1	2	B	-	HM	A	-	17	
18	Turnaround Office	3'-0" x 7'-0" x 1 1/2"	WD	2	2	B	-	HM	A	-	18	
19	Women	3'-0" x 7'-0" x 1 1/2"	WD	2	2	B	-	HM	A	-	19	
20	Men	3'-0" x 7'-0" x 1 1/2"	WD	2	2	B	-	HM	A	-	20	
21	Sales Area	3'-0" x 8'-0" PAR	-	4	1	A	-	STL	C	-	21	125 Degree Swing Side-Color Beige
22	Produce Dry Storage	3'-0" x 8'-0" PAR	-	4	1	A	-	STL	C	-	22	125 Degree Swing Side-Color Beige
23	Dairy Cooler	3'-0" x 7'-0" PAR	-	4	-	-	-	D	-	-	23	125 Degree Swing Side-Color Beige-By Cooler Manuf.
24	Meat Cooler/Meat Prep	3'-0" x 7'-0" PAR	-	4	-	-	-	-	-	-	24	125 Degree Swing Side-Color Beige-By Cooler Manuf.
25	Produce Cooler	3'-0" x 7'-0" PAR	-	4	-	-	-	-	-	-	25	125 Degree Swing Side-Color Beige-By Cooler Manuf.
26	Dairy Freezer	3'-0" x 7'-0"	-	6	-	-	-	-	-	-	26	125 Degree Swing Side-Color Beige-By Cooler Manuf.
27	Meat Cooler	3'-0" x 7'-0"	-	6	-	-	-	-	-	-	27	By Cooler Manuf.
28	Del/Eat	3'-0" x 7'-0"	-	6	-	-	-	-	-	-	28	By Cooler Manuf.
29	Bakery Freezer	3'-0" x 7'-0"	-	6	-	-	-	-	-	-	29	By Cooler Manuf.
30	Meat Prep	3'-0" x 7'-0"	-	3	-	-	-	-	-	-	30	125 Degree Swing Side-Color Beige-By Cooler Manuf.
31	Meat Prep/Seafood	3'-0" x 7'-0"	-	3	-	-	-	-	-	-	31	125 Degree Swing Side-Color Beige-By Cooler Manuf.
32	Restroom	SEE PLAN	AL	10	-	-	-	-	-	-	32	
33	Pharmacy	SEE PLAN	AL	10	-	-	-	-	-	-	33	
34	Pharmacy Waiting	SEE PLAN	AL	1	-	-	-	-	-	-	34	
35	TR Room	3'-0" x 7'-0" x 1 1/2"	WD	1	2	B	-	HM	A	-	35	

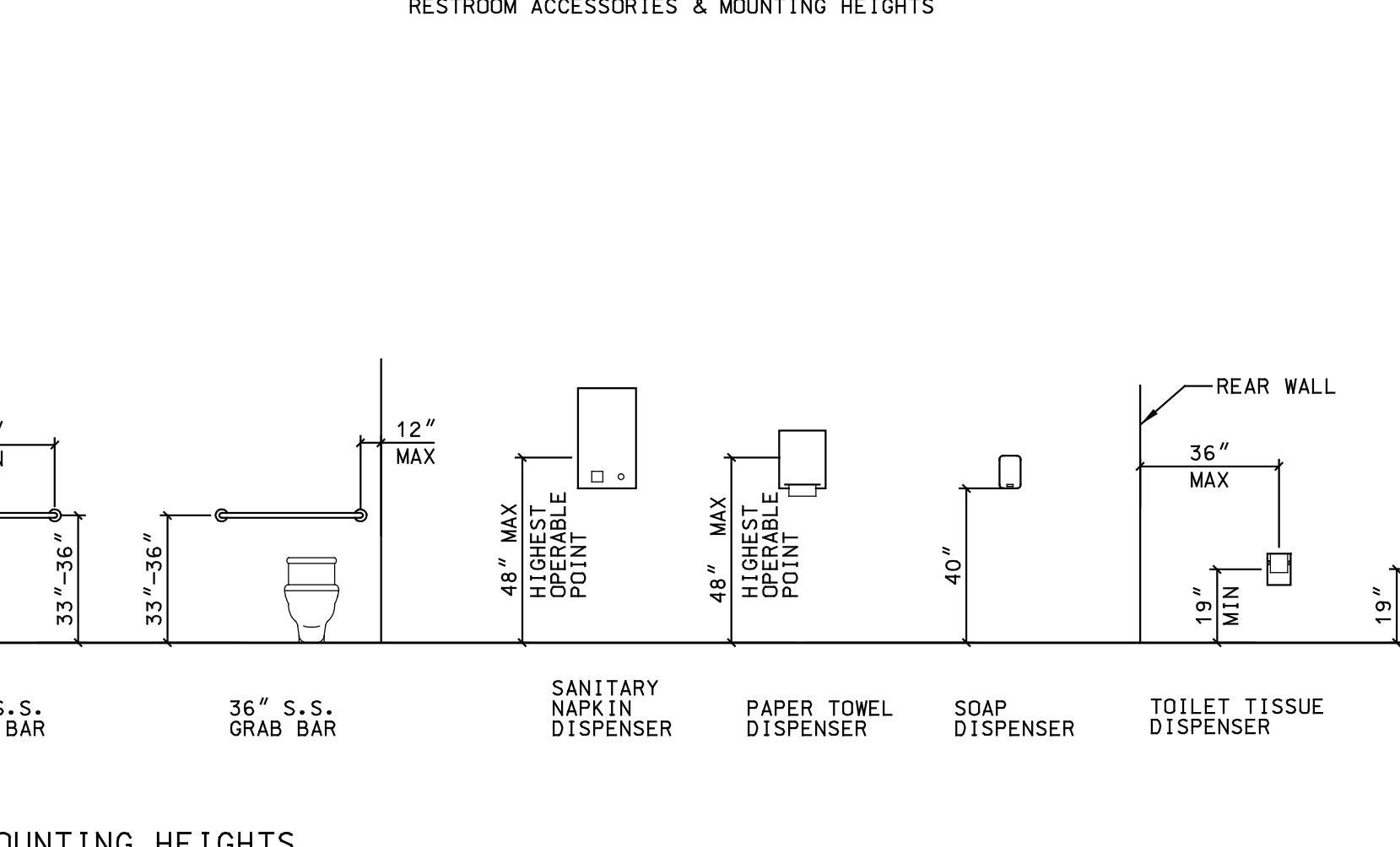
DOOR NOTES:  
 1. DOOR CLOSURES SHALL NOT BE IN VIEW FROM THE SALES AREA, EXCEPT AT EMERGENCY DOORS.  
 2. FRAMES FOR IMPACT DOORS IN PHARMACY ROLLING GRILLE W/DOOR FOR ATTACHMENT DETAILS.

MATERIALS FINISH SCHEDULE

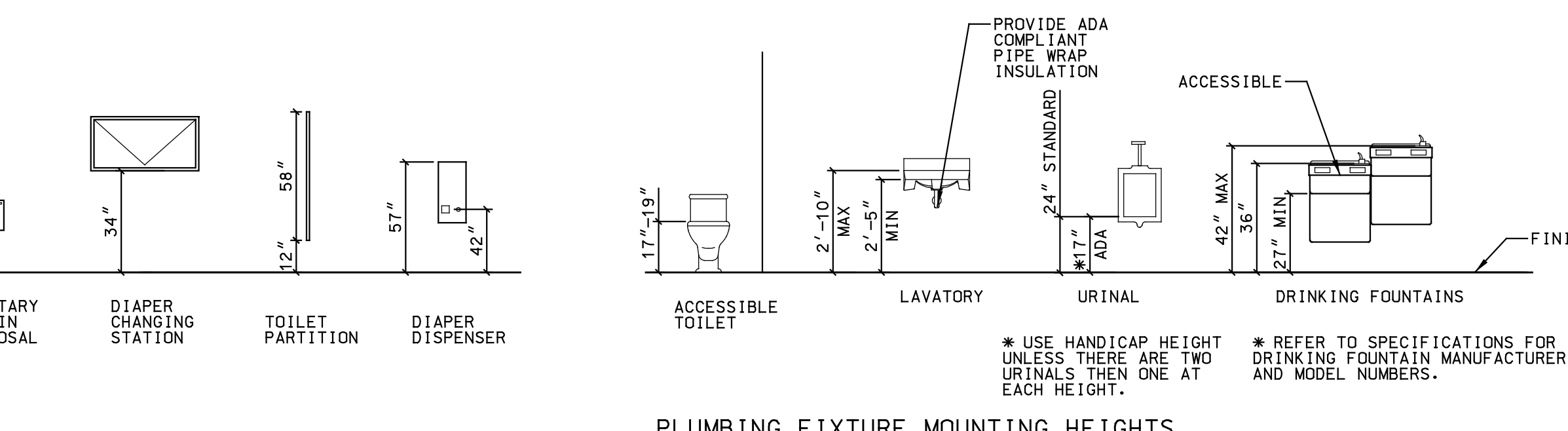
FINISH	TAG	MANUFACTURER'S NUMBER	FINISH	MANUFACTURER	REMARKS	
PAINT	P1	2073 ALBITE CREAM (OFF WHITE)	EGGSHELL	PRATT & LAMBERT	CUSTOMER & GENERAL SALES CEILING	
	P14	2081 GINGER WHIP	EGGSHELL	PRATT & LAMBERT	CUSTOMER SERVICE WALLS	
	P30	1825 PUMPKIN CHIFFON	EGGSHELL	PRATT & LAMBERT	BACK WALLS, OFFICES, PRODUCE DRY STORAGE	
	P31	1492 ARTICHOKÉ	EGGSHELL	PRATT & LAMBERT	PRODUCE	
WALL TILES	CT2	K 165 ALMOND	DAL TILE		6 X 6 TILE UNLESS OTHERWISE NOTED ON DWGS	
	CT3	K 180 CHAMBER	DAL TILE		6 X 6 TILE UNLESS OTHERWISE NOTED ON DWGS	
	CT4	Q177 BLUE MOON	DAL TILE		6 X 6 TILE UNLESS OTHERWISE NOTED ON DWGS	
	CT9	1452 CYPRESS	DAL TILE		6 X 6 TILE UNLESS OTHERWISE NOTED ON DWGS	
	CT10	24 BRIGHT MAIZE	ALUM 1 RD 80 AE	AMERICAN CLEAN	6 X 6 TILE UNLESS OTHERWISE NOTED ON DWGS	
	G1	GROUT - WHITE U200		SCHLUTER SYSTEMS	AT ALL WALL TILE CORNERS	
	FLOOR FINISHES	SEE DRAWING A2 FOR FLOOR FINISHES				
		L12	BRUSHED ALUMINUM 20002-G	GLOSS	PIONITE	MEAT & PRODUCE SIGN BRACKET
	FIBER REINFORCED PANEL	FRP 2 .090" IVORY				
		KAL-LITE by KALWALL CORP. PROVIDE MATCHING DIVISION BAR				
SEE DRAWING A3 FOR CEILING FINISHES						
MISC FINISHES	TOILET COMPARTMENTS TAN #2101					
	WB1	76 DEEP BROWN	ARMSTRONG		TYPICAL FOR ALL TOILET RMS	
	S1	HONEYMAPLE W/POLY FINISH	SATIN	MINWAX	VINYL BASE	
	S2	NATURAL PLY	SATIN	MINWAX		
	WC1	359 GINGER SPIKE	SM - (CUSTOMER'S SPEC)		VINYL BASE	
	WC2	373 SAGE GREEN	PAWING CORPORATION		PAWING CORPORATION	
	ACCESSORY MOUNTINGS MATCH VC CLR					
	IMPACT DOORS - MEAT DEPT ONLY					
	INTERIOR HM FRAMES & TUBE STEEL					
	DECORATIVE ROUND COLUMNS					
ROOF FRAMES & TUBE STEEL						
UNDERSIDE OF WTL DECK						
MTL DECK MOUNTED HARDWARE						
2" WALL GUARD						
2" WALL GUARD						
SALES FLOOR COLUMNS, GYP. BD.						
STRUCTURAL STEEL & DECK						
MEATS AND CONDIT						
GYP BD CEILING						
WOOD DOORS						
WOODWORKS						
W2 DOUGLAS FIR						

FINISH SCHEDULE NOTES:  
 A. USE MOISTURE RESISTANT GYP BOARD AT FRP PANELS & CERAMIC TILE ABOVE 4'-0"  
 B. USE CEMENTITIOUS BACKER BOARD FROM FINISH FLOOR TO 4'-0" BEHIND TILE.  
 C. INTERIOR FINISHES OF COOLER ARE BY COOLER CONTRACTOR.  
 D. FRP ON ALL WALLS IN PRODUCE PREP AREA FROM FLOOR TO 8' ABOVE CEILING.  
 E. REFER TO CEILING PLAN, FLOOR FINISH PLAN, INTERIOR ELEVATIONS AND DECOR FINISH NOTES FOR FINISHES IN THESE AREAS.  
 F. ALUMINUM BASE IN COOLERS PROVIDED.  
 G. FRP PANELING SHALL TERMINATE AT THE CERAMIC/TILE WALLS & BASES.  
 H. VINYL BASE IN THE SALES AREA OR OTHER AREAS NOTED, IS ONLY REQUIRED AT SECTIONS OF WALL NOT COVERED BY SHELVING (SEE NOTE L) TO BE PAINTED P30 WITH 4" VINYL BASE.  
 I. FRP PANELING SHALL BE INSTALLED TO CEILING HEIGHT UNLESS NOTED OTHERWISE, FINISH SCHEDULE NOTES.  
 J. PROVIDE R-11 BATT SOUND ATTENUATION INSULATION IN WALLS AND ABOVE CEILING, IN PHARMACY, CASH OFFICE, ALL SECOND FLOOR OFFICES AND BATHROOMS.  
 K. WHERE PAINT IS NOT INDICATED IN THE FINISH SCHEDULE THE COLOR SHALL BE P30.  
 L. EMPLOYEE LOUNGE SHALL HAVE 1 - P33 WALL OPPOSITE THE ENTRANCE ALL WALLS SHALL HAVE TYPICAL 8" WALL GUARD.  
 M. COOLER/FREEZER DOORS & FRAMES VISIBLE TO SALES FLOOR TO BE PAINTED P30.  
 N. WOOD DOORS STAINED S2 FRAMES TO BE PAINTED P30 ALL SIDES.  
 O. STEEL DOORS & DOOR FRAMES TO BE PAINTED P30.  
 P. CERAMIC TILE PATTERNS SHOULD RETURN AT JAMBS AND WALL SIDES.  
 Q. TERMINATE PAINT COLORS AT INSIDE CORNERS UNO.  
 R. 6 X 6 WALL TILE UNLESS NOTED OTHERWISE.  
 S. SEE SOFFIT DETAILS FOR LIMITS OF PAINT.  
 T. ALL OFFICES, CORRIDORS, LOUNGE (SEE NOTE L) TO BE PAINTED P30 WITH 4" VINYL BASE.  
 U. PAINT ALL INTERIOR COLUMNS SAME AS THE BACK WALL

ENLARGED RESTROOM PLAN



ENLARGED RESTROOM PLAN  
 NOTE: FOR MORE INFORMATION SEE RESTROOM ACCESSORIES & MOUNTING HEIGHTS



PLUMBING FIXTURE MOUNTING HEIGHTS

REVISIONS

NO.	DATE	BY	DESCRIPTION
1			

REVISIONS

NO.	DATE	BY	DESCRIPTION
1			

Hannaford  
 Riverside Street  
 Portland, Maine

DOOR SCHEDULE, FINISH SCHEDULE, & RESTROOM PART PLAN

DESIGN: K STIERRE  
 DRAWN: K STIERRE  
 CHECKED: [ ]  
 PROJECT NO.: [ ]  
 DATE: AUGUST 2004  
 © 2004 Hannaford Bros Co