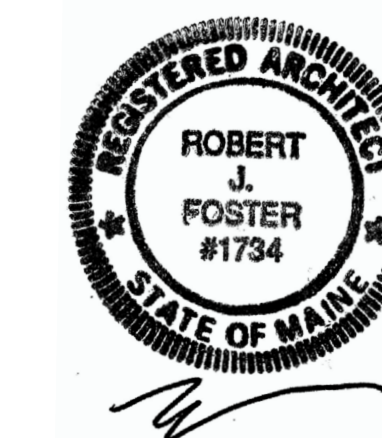


ROBERT J. FOSTER ARCHITECT

36 Groveside Road, Portland, Maine 04102

(207) 761-3822



Project Title

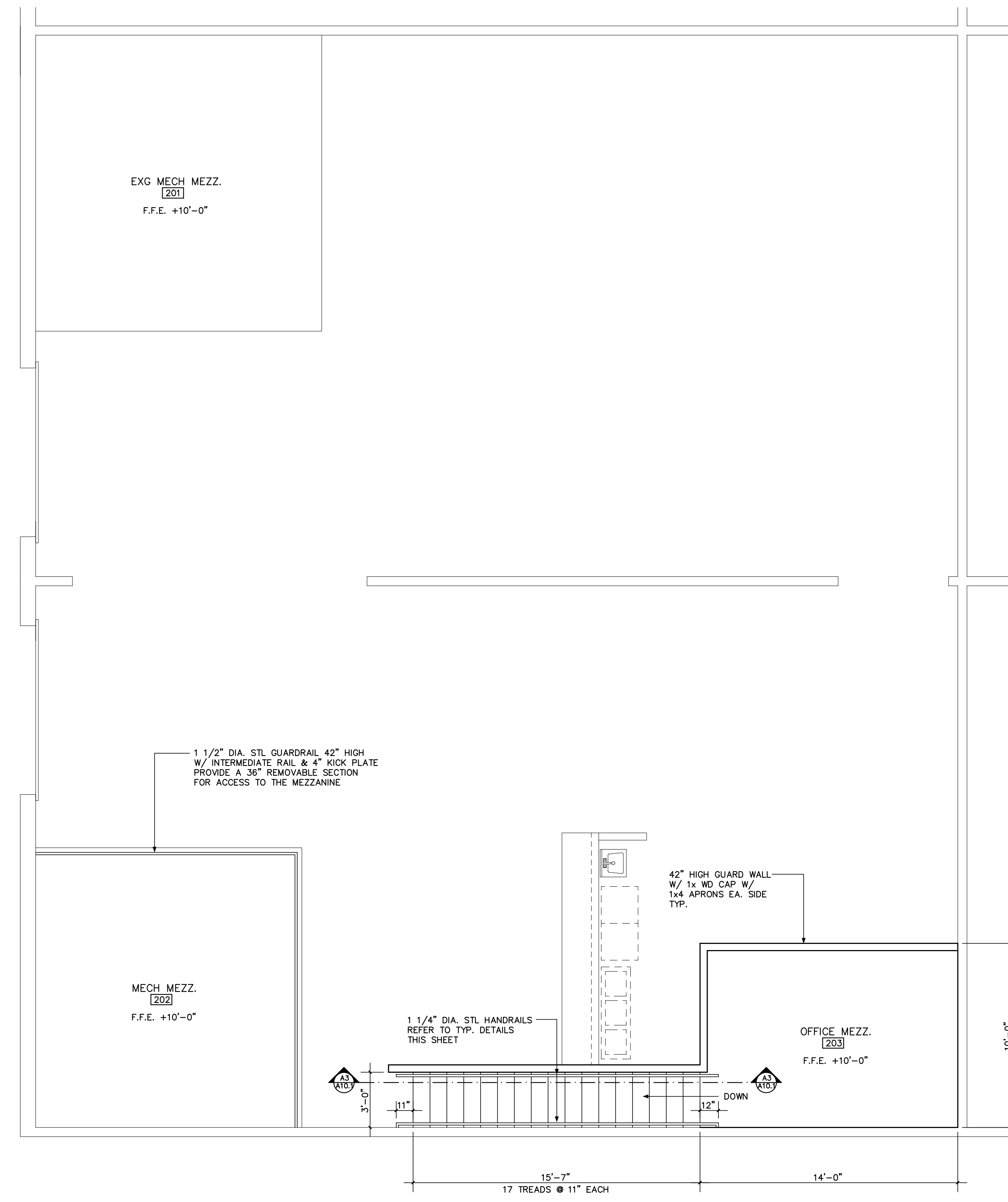
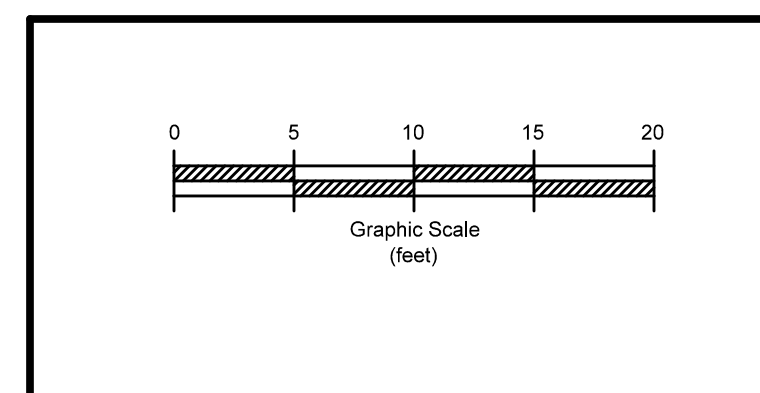
### BATTERY STEELE RENOVATIONS

1 INDUSTRIAL WAY, UNIT #12  
PORTLAND, MAINE

#### GENERAL NOTES

1. ALL DIMENSIONS ARE EITHER TO FACE OF STUDS OR CENTER LINE OF STUDS UNLESS OTHERWISE NOTED.
2. PROVIDE SOLID BLOCKING AT WALLS TO SUPPORT ALL REQUIRED ITEMS: GRAB BARS, HANDRAILS, CABINETS, STORAGE SHELVING, ETC...
3. PROVIDE CONTROL JOINTS IN GPDW PARTITIONS AT A MAX. SPACING OF 30'-0". REVIEW LOCATIONS WITH ARCHITECT
4. ALL PARTITIONS TO BE 2x4'S AT 16" O.C. W/ 5/8" GPDW UNLESS OTHERWISE NOTED.

01 - 18 - 18	CONSTRUCTION DRAWINGS	
Mark	Date	Description
Issue Dates		



MEZZANINE FLOOR LEVEL PLAN  
1/4" = 1'-0" A1

Drawing Title

## MEZZANINE FLOOR PLAN

Drawing Number

# A10.2