

BUILDING DESIGN CODES:

AMERICAN WITH DISABILITIES ACT (ADA)
 UFAS - ACCESSIBILITY STANDARDS
 2009 NFPA 101 LIFE SAFETY CODE
 2009 IBC
 2009 MAINE STATE PLUMBING CODE
 2007 NEC

ACTUAL BUILDING AREA:

1ST FLOOR AREA 1,498 SF
 TOTAL BUILDING AREA 1,498 SF

ALLOWABLE BUILDING AREA:

GROUP "F-2" 13,000 SF/FLR
 TOTAL ALLOW. AREA 13,000 SF/FLR

OCCUPANCY CLASSIFICATIONS:

IBC - FACTORY INDUSTRIAL LOW HAZARD "GROUP F-2"
 NFPA - INDUSTRIAL (CHAPTER 40)

CONSTRUCTION CLASSIFICATION:

IBC - TYPE 5B (COMBUSTIBLE/UNPROTECTED)
 NFPA - TYPE VB (000)

NUMBER OF STORIES/BLDG HT.

ACTUAL - 1 STORIES & 20 FEET
 ALLOWABLE - 2 STORIES & 40 FEET

OCCUPANT LOAD (Refer to Floor Plan)

INDUSTRIAL	1/100 SF	15 PERSONS
BUSINESS	1/100 SF	2 PERSONS
TOTAL OCCUPANCY		17 PERSONS

FIRE SUPPRESSION:

N.A.

SEPARATION REQUIREMENTS

N.A.

MEANS OF EGRESS: (2009 IBC)

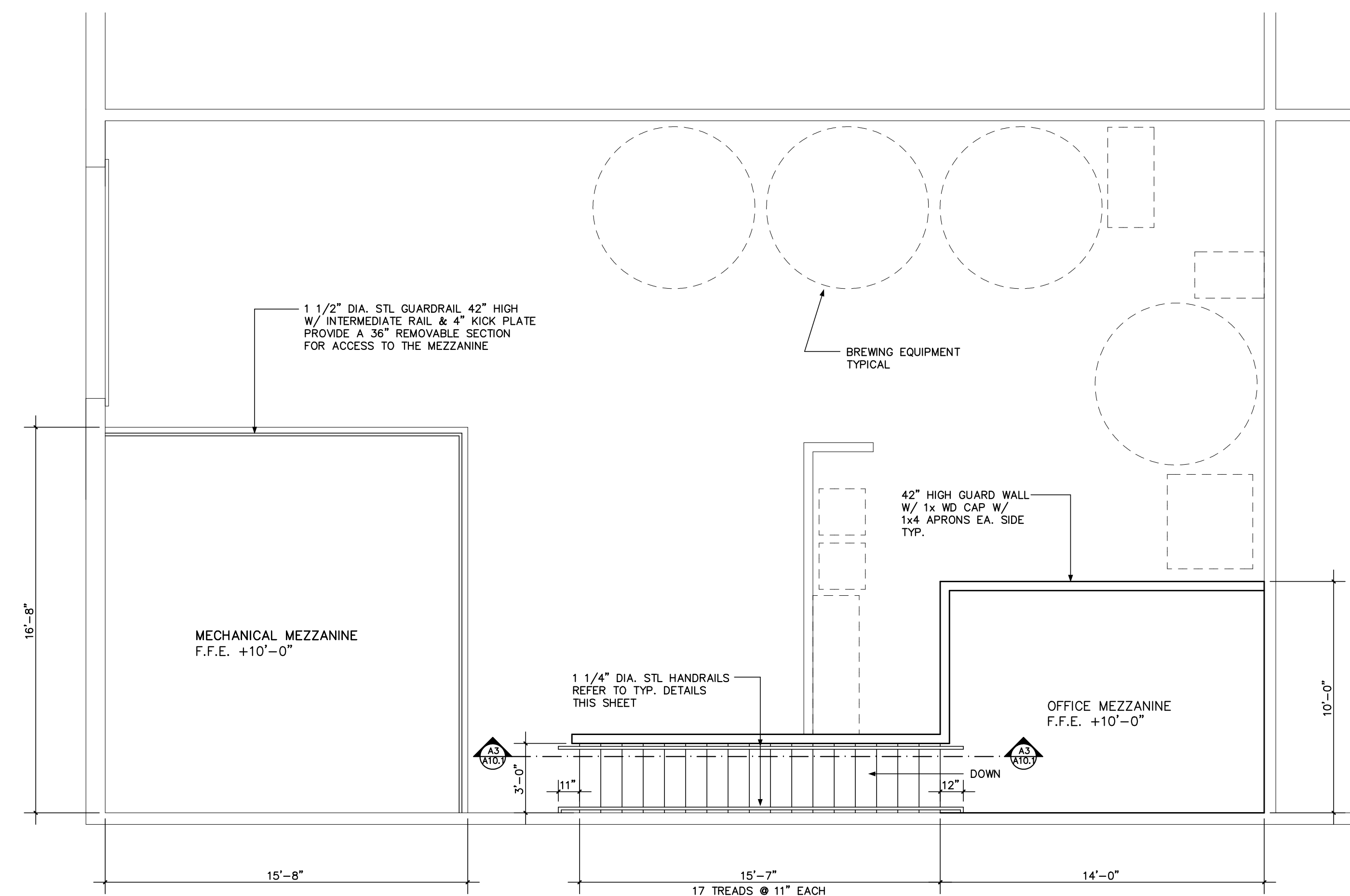
NO. OF MEANS OF EGRESS	1	(OCCUPANCY LESS THAN 50)
MAX. TRAVEL DISTANCES	200 FT.	(NFPA 101)
MAX. DEAD END CORRIDOR	20 FT.	
MAX. COMMON PATH OF TRAVEL	50 FT.	(NFPA 101)
MIN. CORRIDOR/STAIR WIDTH	36 INCHES	

FIRE RESISTANCE ASSEMBLY RATINGS: (2009 IBC)

ELEVATOR SHAFTS	1 HOUR
STAIR SHAFTS	1 HOUR
EXIT ACCESS CORRIDORS	1 HOUR
FIRE BARRIERS	2 HOUR
FIRE WALLS	3 HOUR

FIRE ALARM & DETECTION SYSTEMS: (NFPA 101)

NOT REQUIRED WHEN OCCUPANCY IS LESS THAN 100



CODE INFO.

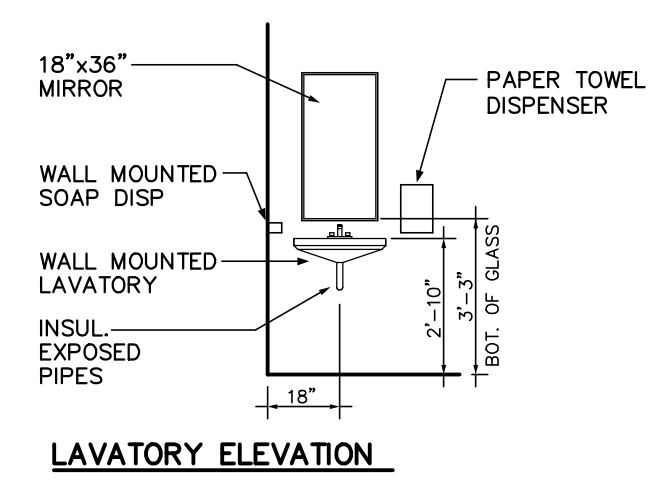
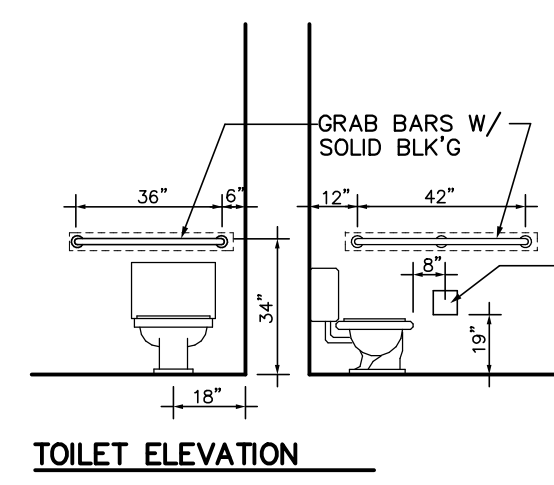
NTS

D2

MEZZANINE FLOOR LEVEL PLAN

1/4" = 1'-0"

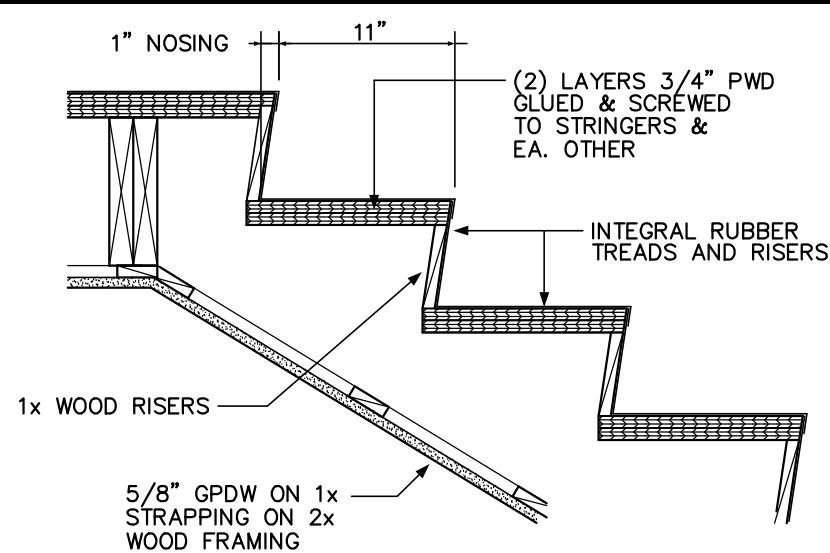
D1



TOILET RM ELEVATIONS

NTS

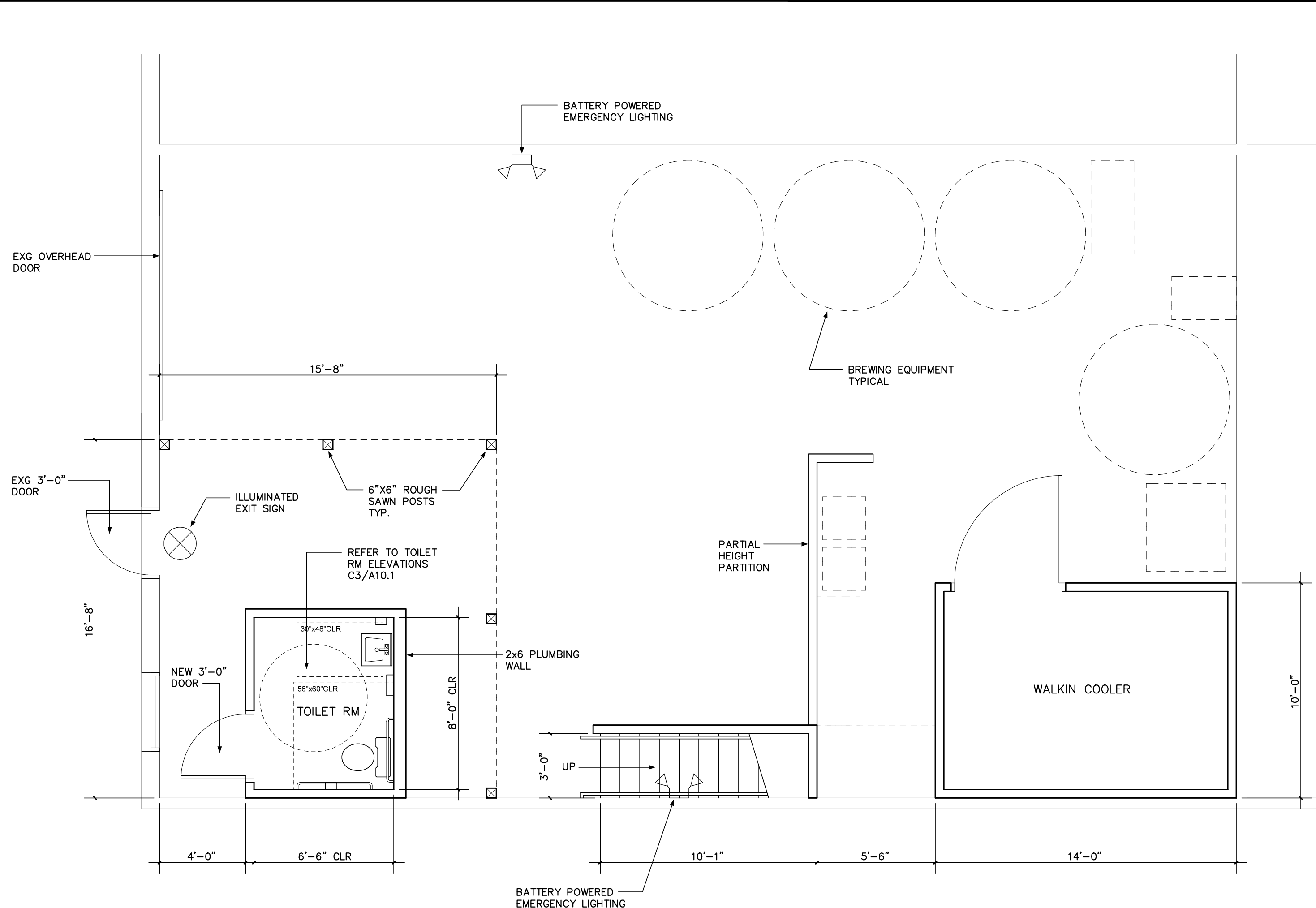
C3



TYPICAL STAIR DTL

NTS

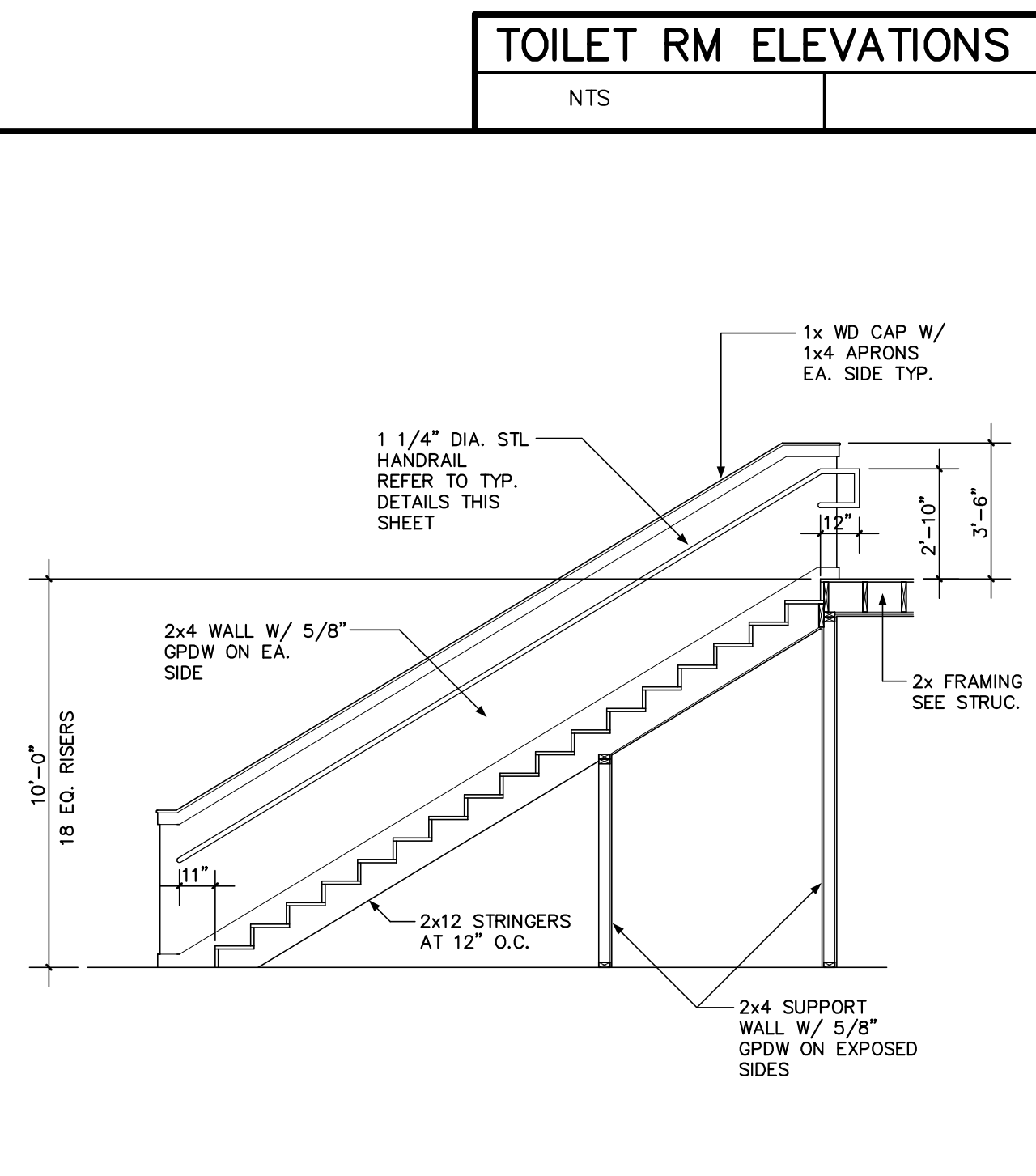
C2



FIRST FLOOR LEVEL PLAN

1/4" = 1'-0"

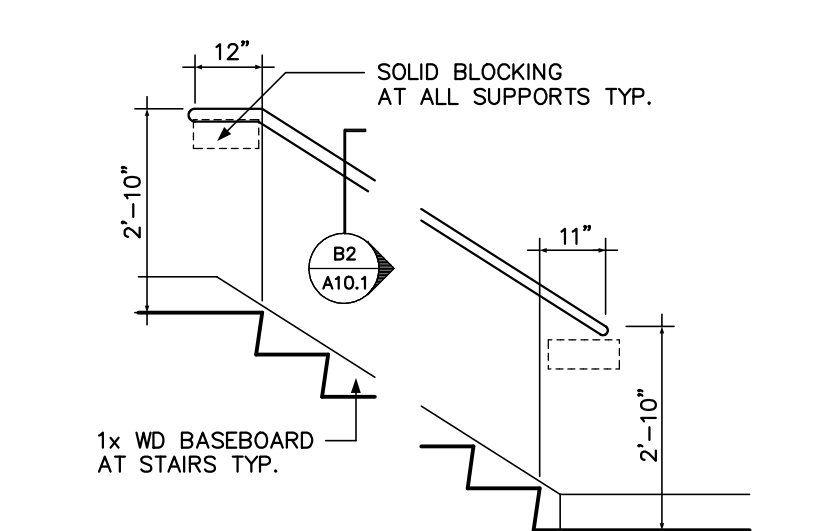
A1



STAIR SECTION

NTS

A3



TYPICAL STAIR DTL

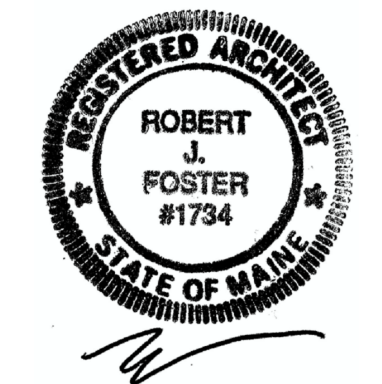
NTS

A2

ROBERT J. FOSTER ARCHITECT

36 Groveside Road, Portland, Maine 04102

(207) 761-3822



Project Title

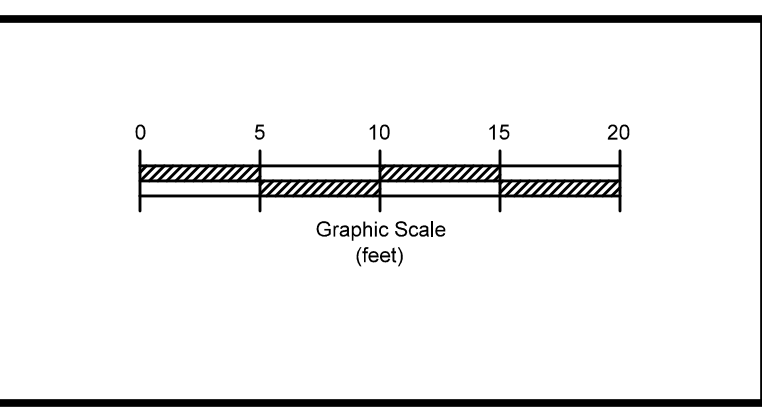
BATTERY STEELE RENOVATIONS

1 INDUSTRIAL WAY, UNIT #12
 PORTLAND, MAINE

GENERAL NOTES

- ALL DIMENSIONS ARE EITHER TO FACE OF STUDS OR CENTER LINE OF STUDS UNLESS OTHERWISE NOTED.
- PROVIDE SOLID BLOCKING AT WALLS TO SUPPORT ALL REQUIRED ITEMS: GRAB BARS, HANDRAILS, CABINETS, STORAGE SHELVING, ETC...
- PROVIDE CONTROL JOINTS IN GPDW PARTITIONS AT A MAX. SPACING OF 30'-0". REVIEW LOCATIONS WITH ARCHITECT
- ALL PARTITIONS TO BE 2x4'S AT 16" O.C. W/ 5/8" GPDW UNLESS OTHERWISE NOTED.

11 - 10 - 17	PERMIT DRAWINGS	
Mark	Date	Description
Issue Dates		



Drawing Title

LAYOUT PLANS

Drawing Number

A10.1