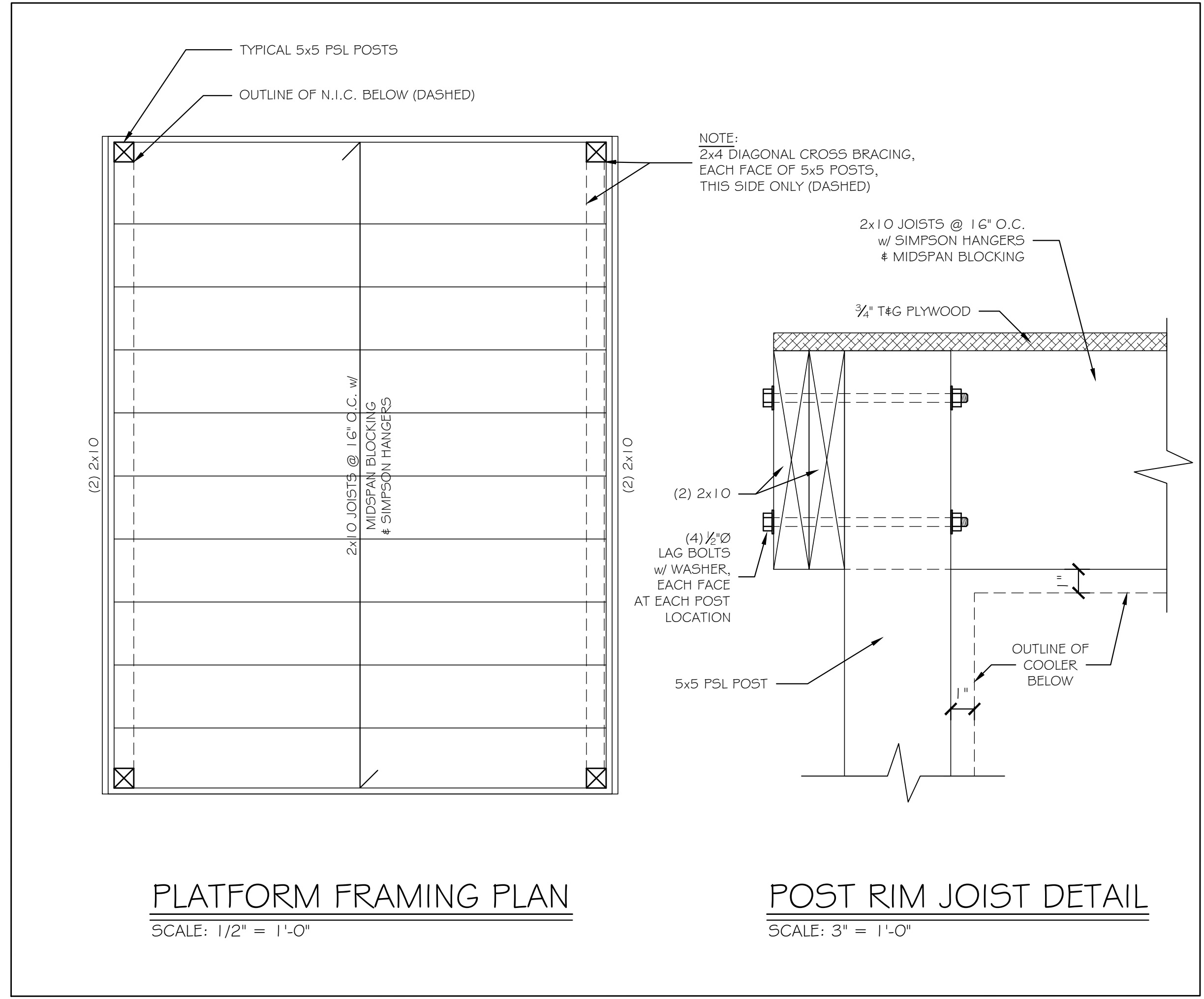
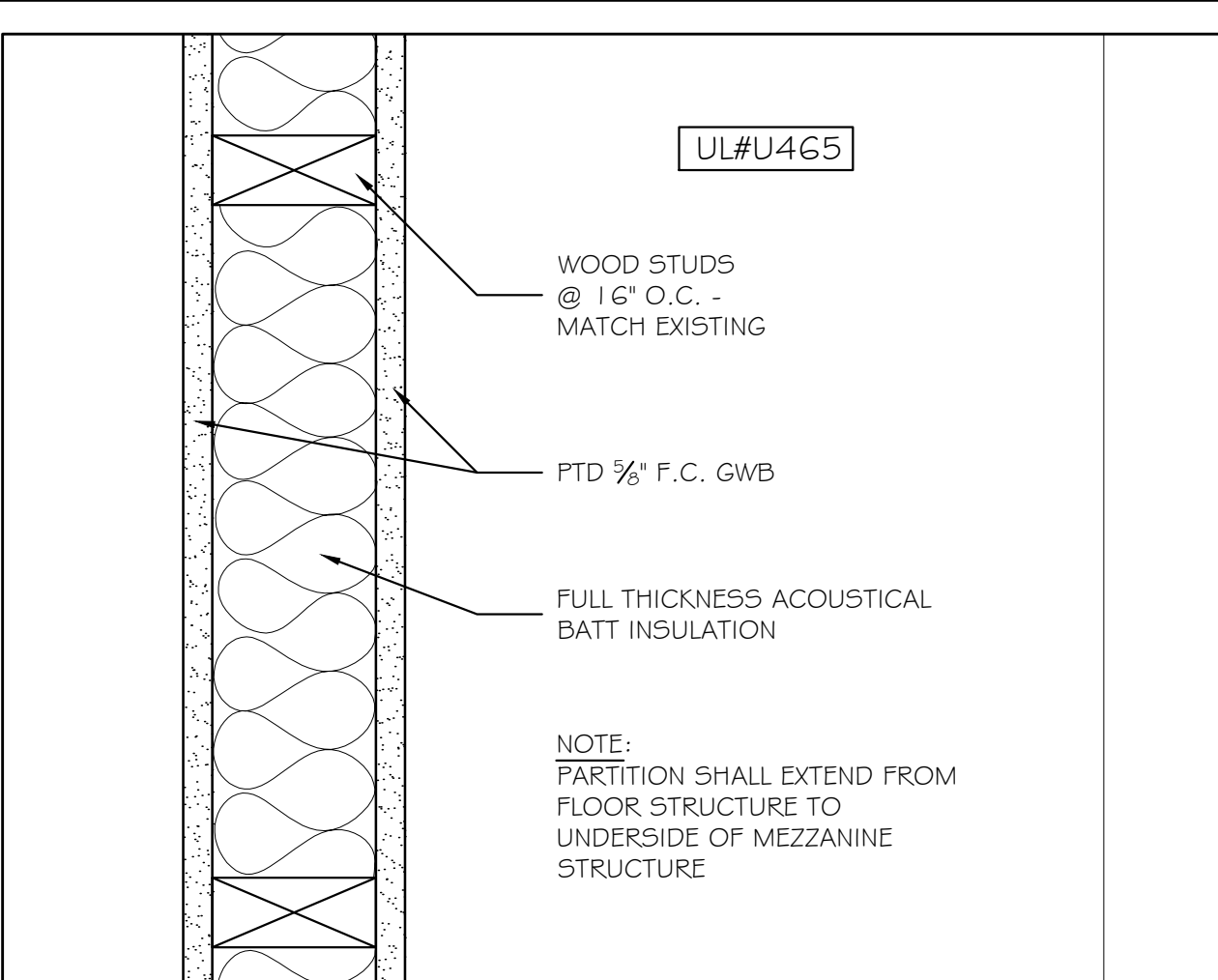


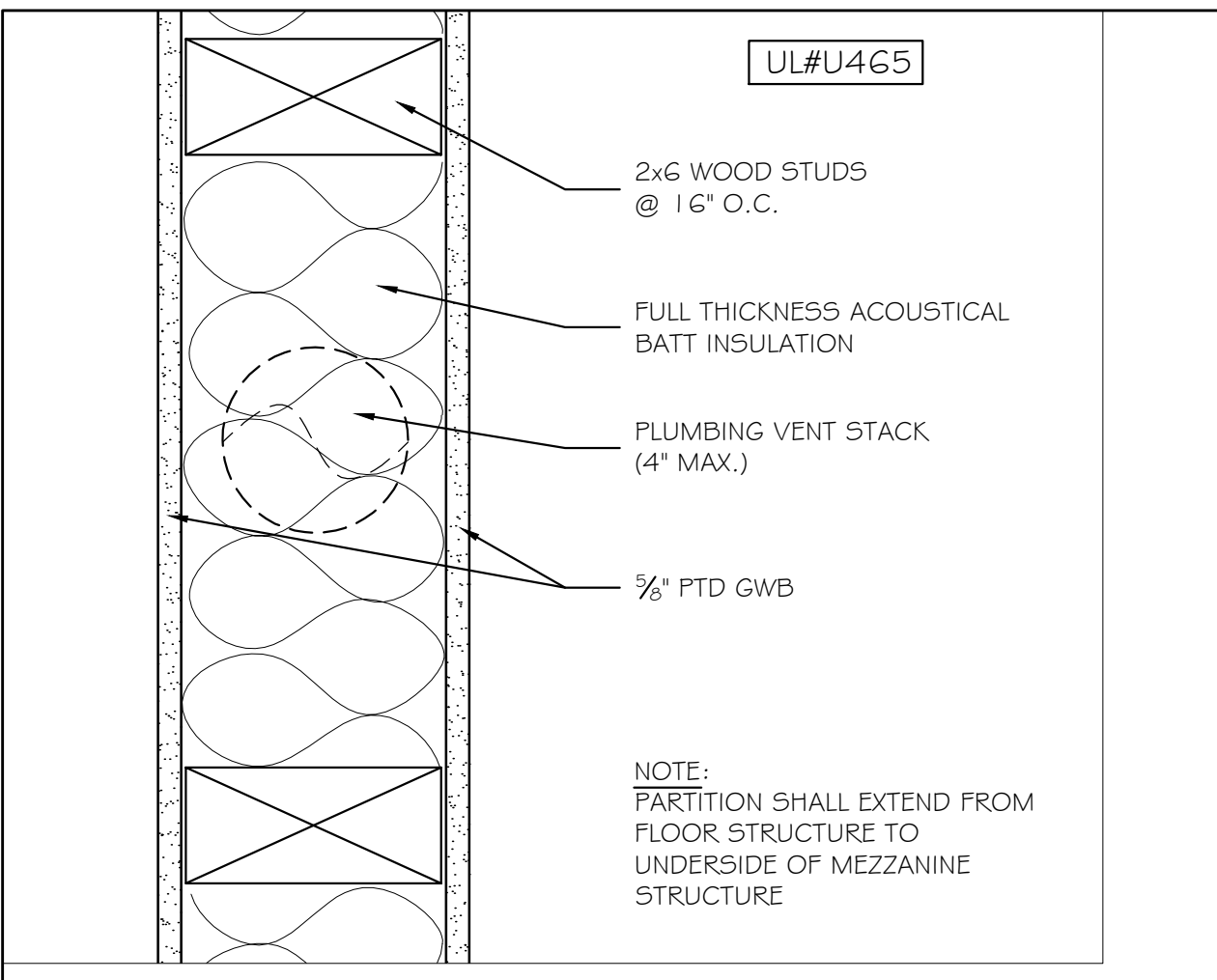
5 STORAGE MEZZANINE AT PRODUCTION AREA PLAN 1/2" = 1'-0"



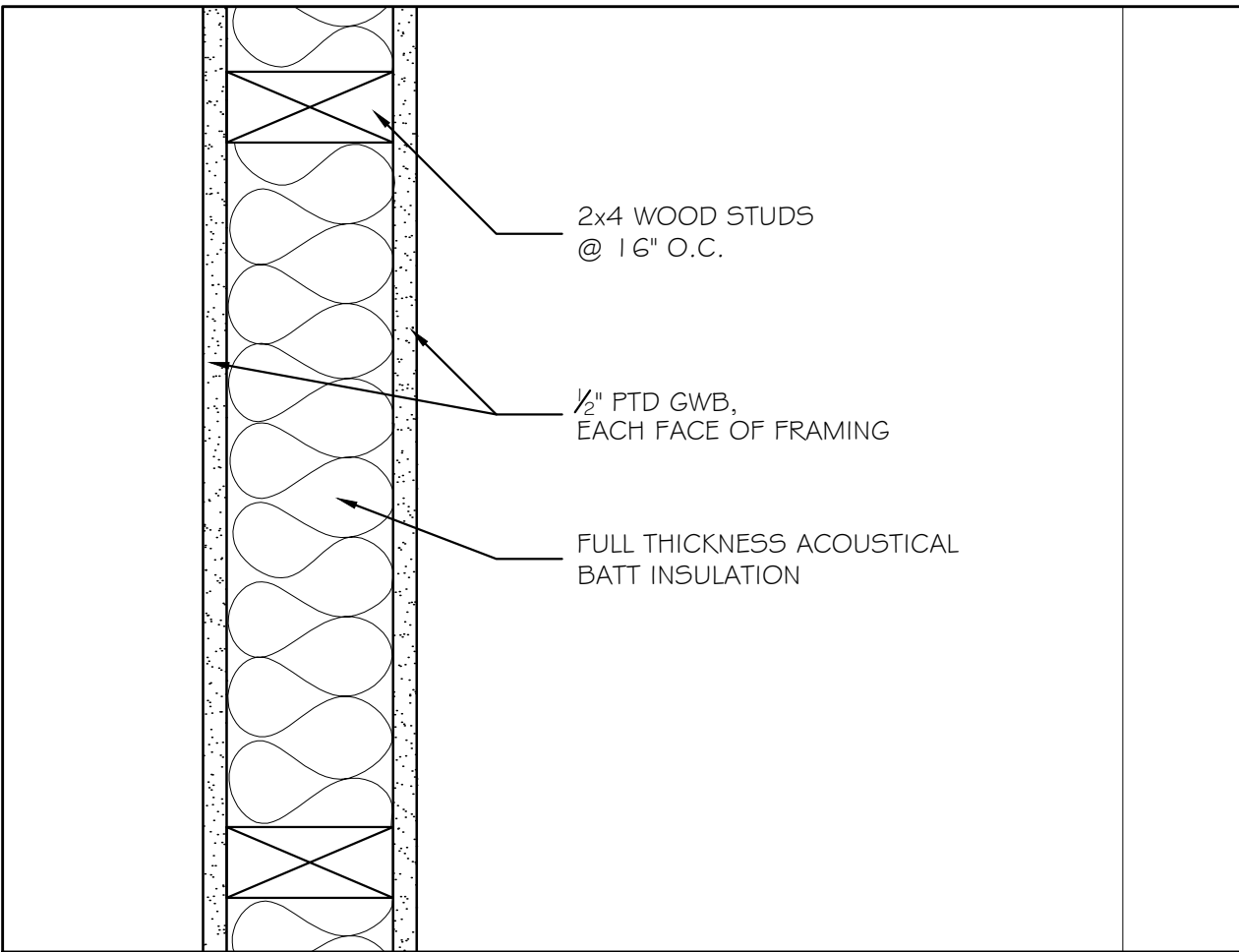
6 STORAGE PLATFORM AT WALK-IN COOLER 1/2" = 1'-0"



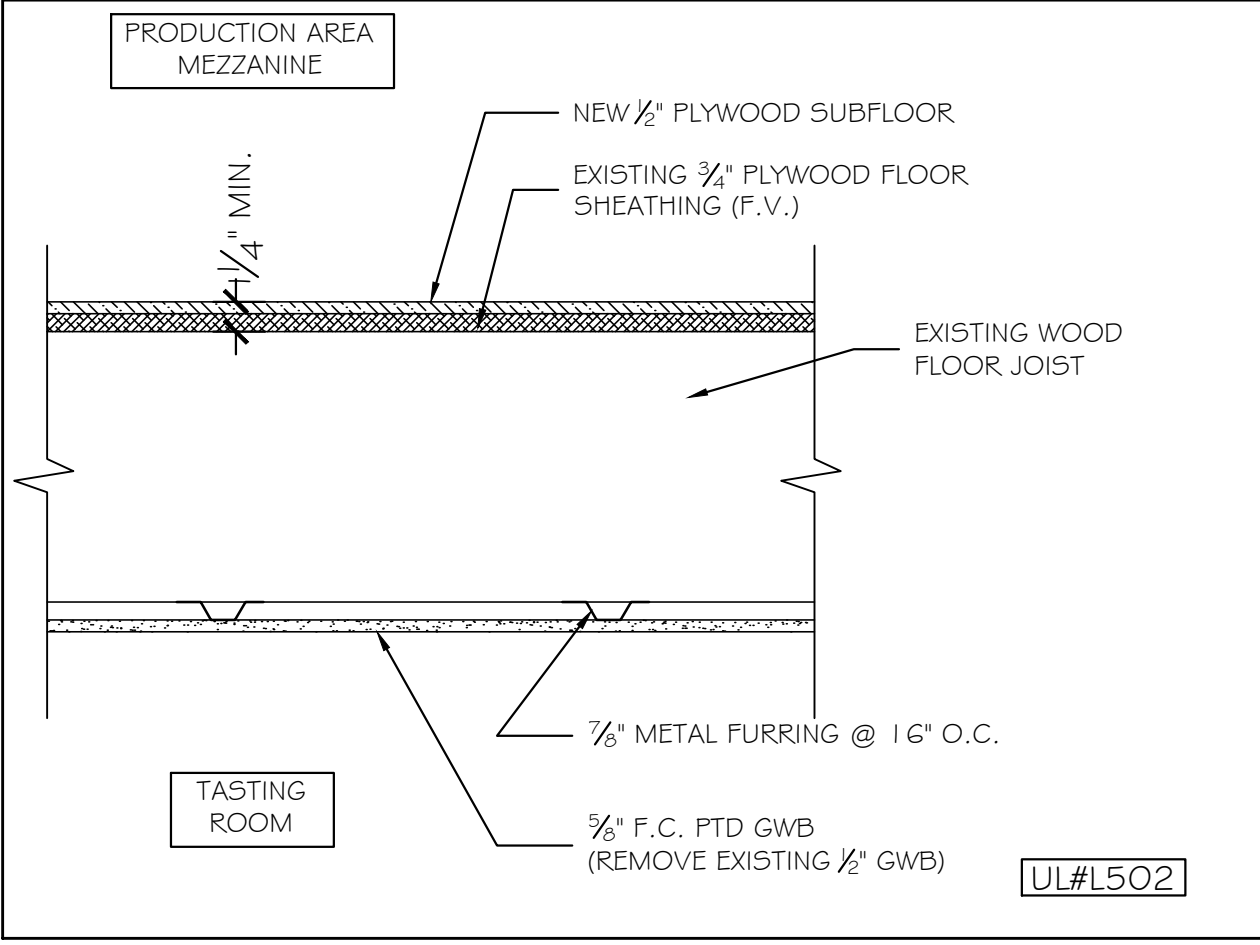
1 TYPICAL 1 HR RATED PARTITION 3" = 1'-0"



2 TYPICAL PARTITION 3" = 1'-0"



3 TYPICAL PARTITION 3" = 1'-0"



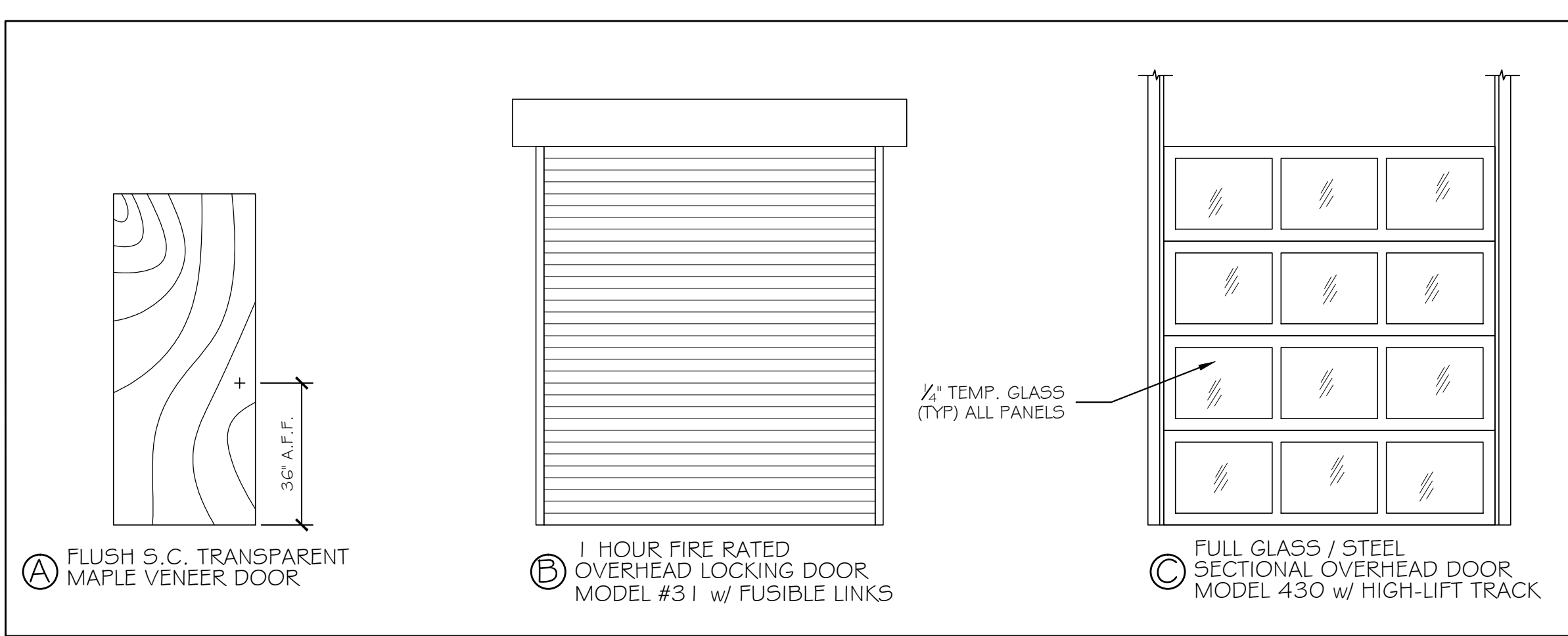
4 1 HR RATED FLOOR/CEILING ASSEMBLY 1 1/2" = 1'-0"

### DOOR SCHEDULE

NO.	TYPE	SIZE (w x h)	THK	INSUL	HDWE	FR	GLASS		REMARKS	FRAMES			THRESHOLDS				
							TYPE	SIZE		TYPE	FR	PROFILE	HEAD	JAMB	MAT'L	SILL	FIN
101	A	3070	1	NO	HW-1	1 HR	FIRE	24x36		HM	1 HR	DW			NONE		
102	A	3070	1	NO	HW-2	NO	NONE	NONE		HM	NO	DW			NONE		
103	A	3070	1	NO	HW-2	NO	NONE	NONE		HM	NO	DW			NONE		
104	B	7070	1	NO		1 HR	NONE	NONE	FUSIBLE LINKS	MFGR	1 HR	MFGR	MFGR	MFGR	MFGR	MFGR	MFGR
105	C	7070	1	NO		NO	TEMP	FULL	HI-LIFT TRACK		NO		MFGR	MFGR	MFGR	MFGR	MFGR

### FINISH SCHEDULE

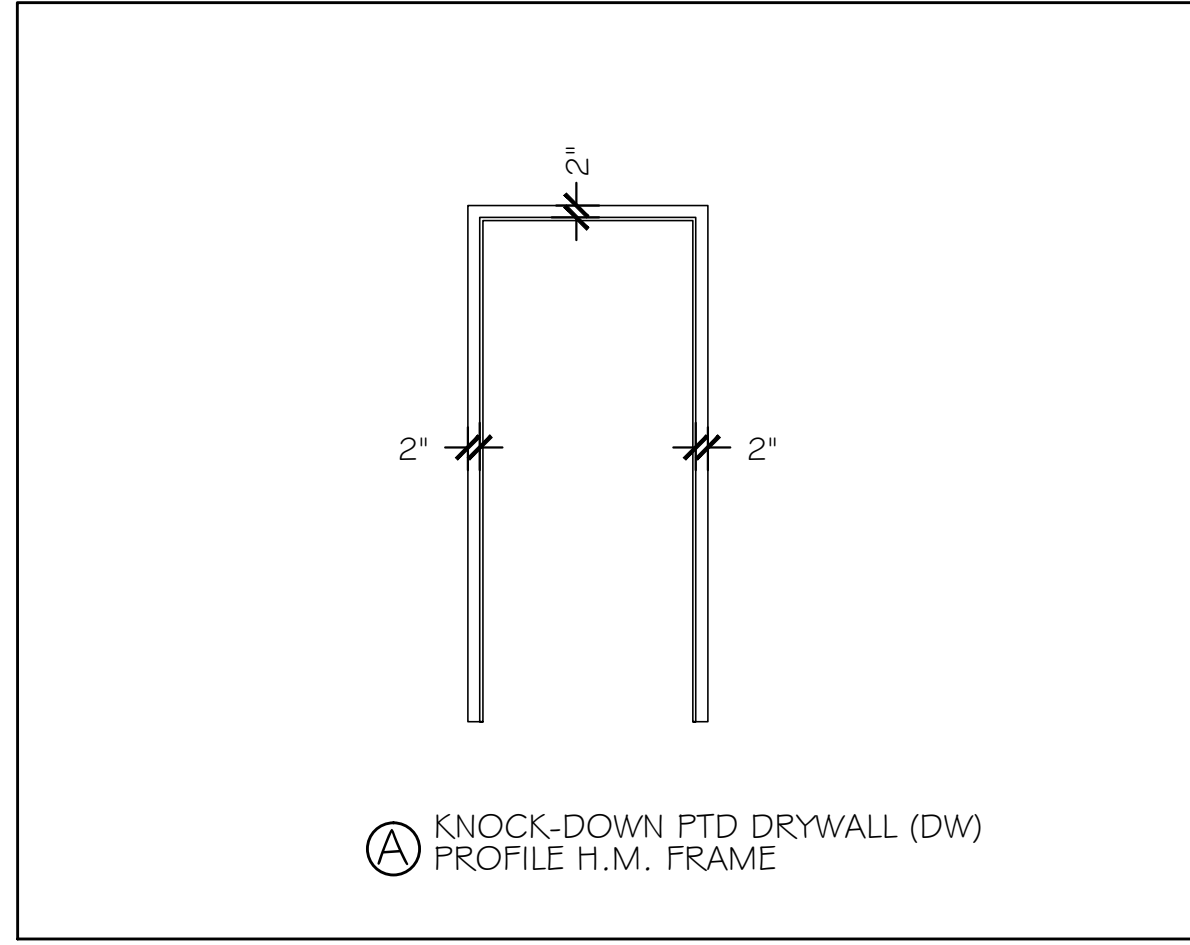
RM NO.	NAME	WALLS				FLOORS				CEILING A		CEILING B		REMARKS
		N	E	S	W	MAT'L	BASE	MAT'L	BASE	TYPE	HT.	TYPE	HT.	
101	STAFF	(E)*	(E)*	(E)*	(E)*	(E) CH	VCB			(E)	(E) 8'-0"			*PATCH / PAINT
102	TASTING ROOM	(E)*	(E)*	(E)*	(E)*	(E) CH	VCB			P/GWB	8'-0"			*PATCH / PAINT
103	UNISEX TOILET	P/GWB	P/GWB	P/GWB	P/GWB	(E) CH	VCB			P/GWB	8'-0"			
104	UNISEX TOILET	P/GWB	P/GWB	P/GWB	P/GWB	(E) CH	VCB			P/GWB	8'-0"			
105	PRODUCTION AREA	(E)	(E)*	(E)	(E)	(E) CH	VCB*			(E)	(E)			*PATCH / PAINT
106	PRODUCTION AREA	(E)*	(E)	(E)*	(E)	(E) CH	VCB*			(E)	(E)			*PATCH / PAINT
107	PRODUCTION AREA	(E)	(E)	(E)*	(E)	(E) CH	VCB*			(E)	(E)			*PATCH / PAINT
108	STAGING/SHIPPING/REC.	(E)*	(E)	(E)	(E)	(E) CH	VCB*			(E)	(E)			*PATCH / PAINT
109	QC LAB	(E) P	(E) P	(E) P	(E) P	(E) CH	(E)			(E)	(E)			*PATCH / PAINT



DOOR TYPES 3/8" = 1'-0"

### HARDWARE SCHEDULE

HW-1 (1 HR RATED)	3 BUTTS 1 LEVER LOCKSET - OFFICE FUNCTION 1 DOOR CLOSER - PARALLEL ARM 2 FRAME SILENCERS
HW-2	3 BUTTS 1 LEVER LOCKSET - PRIVACY FUNCTION w/ OCCUPANCY INDICATOR 1 DOOR STOP 2 FRAME SILENCERS



FRAME TYPES 3/8" = 1'-0"

**GRANT HAYS ASSOCIATES**

ARCHITECTURE & INTERIOR DESIGN  
P.O. BOX 6179 FALMOUTH MAINE 04105  
207.871.5900 www.granthays.com

MICHAEL F. HAYS  
No. 1724  
STATE OF MAINE  
LICENSED ARCHITECT

**foundation**  
BREWING COMPANY  
EXPANSION

PORTLAND, MAINE 04103  
ONE INDUSTRIAL WAY

WET CORE  
PLAY &  
ELEVATIONS

DATE: 15 MAR '16  
SCALE: AS NOTED  
DRAWN: MFH/mgk  
JOB NO.: 160201

**A4**

COPYRIGHT REPRODUCTION OR RELIANCE OF THIS DOCUMENT WITHOUT WRITTEN PERMISSION FROM GRANT HAYS ASSOCIATES IS PROHIBITED.