

**NOTES:**

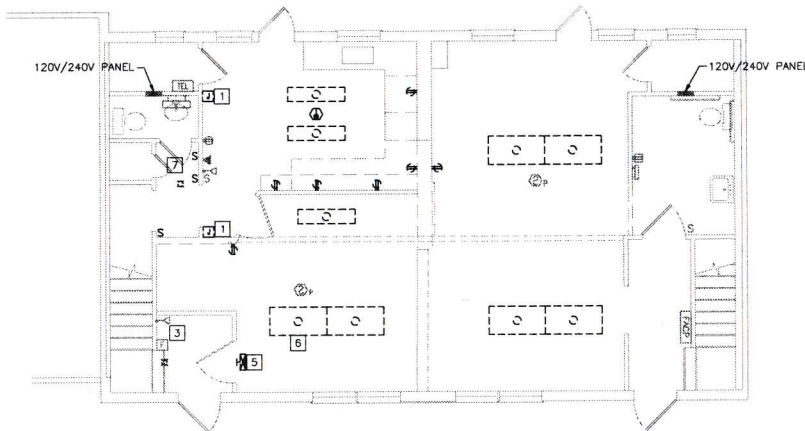
1. SEE SHEET E-001 FOR LEGEND, ABBREVIATIONS, AND GENERAL NOTES.
2. NOT ALL EXISTING ELECTRICAL EQUIPMENT AND DEVICES SHOWN. EXISTING TO REMAIN EQUIPMENT SHOWN FOR REFERENCE ONLY.
3. POWER NEW LIGHT FIXTURES AND CONVENIENCE RECEPTACLES FROM EXISTING LOCAL CIRCUITS UNLESS OTHERWISE NOTED.
4. NEW CIRCUIT FOR ELEVATOR, WASHER, AND DRYER ARE TO BE FROM "HOUSE" PANEL LOCATED ON EXTERIOR EAST WALL OF BUILDING (APPROXIMATELY 150FT AWAY). ROUTE CIRCUITS ALONG EXTERIOR OF BACK WALL IN PVC CONDUIT.

**KEYED NOTES:**

- 1 DEDUCTIVE ALTERNATE NO. 2: PROVIDE NEW CEILING MOUNTED LIGHT FIXTURES (TRULY GREEN SOLUTIONS LED ECO PANEL). CONNECT TO EXISTING ROOM LIGHTING CIRCUIT.
- 2 RE-INSTALL EXISTING EMERGENCY REMOTE HEAD IN NEW WALL.
- 3 PROVIDE SMOKE DETECTOR DESIGNATED FOR USE IN ELEVATOR SHAFT. SMOKE DETECTOR SHALL INITIATE ELEVATOR RECALL SEQUENCE. COORDINATE WITH ELEVATOR INSTALLER.
- 4 PROVIDE NEW CEILING MOUNTED LED LIGHT FIXTURE. (SUNPARK 150WRD). SWITCH FIXTURE FROM TOGGLE SWITCHES JUST OUTSIDE ELEVATOR ENTRANCES.
- 5 DEDUCTIVE ALTERNATE NO. 3: RE-WIRE BATHROOM LIGHTING CIRCUIT. PROVIDE NEW CEILING MOUNTED LED LIGHT FIXTURE (SUNPARK 150WRD), AND TOGGLE SWITCH. CONNECT EXISTING WALL MOUNTED LIGHT FIXTURE TO NEW TOGGLE SWITCH.
- 6 REPLACE CEILING MOUNTED FIXTURE WITH LED LIGHT FIXTURE (SUNPARK 150WRD). CONNECT TO EXISTING LIGHT CIRCUIT.
- 7 PROVIDE 120V, 20A CIRCUIT BREAKER IN "HOUSE" PANEL FOR ELEVATOR. CIRCUIT CONDUCTORS SHALL BE 2#10 AWG, 1#10 GND. PROVIDE FUSED DISCONNECT WITH AUXILIARY CONTACTS.
- 8 DEDUCTIVE ALTERNATE NO. 1: PROVIDE 120V, 20A CIRCUIT BREAKER AND 240V, 30A CIRCUIT BREAKER IN "HOUSE" PANEL FOR WASHER AND DRYER. PROVIDE NEMA 14-30 RECEPTACLE AND CORD FOR NEW DYER. WASHER CIRCUIT CONDUCTORS SHALL BE 2#10 AWG, 1#10 GND. DRYER CIRCUIT CONDUCTORS SHALL BE 2#8 AWG, 1#10 GND. UTILIZE NEW SOFFIT FOR CONCEALING CONDUIT AND CONDUCTORS. SEE SHEET A-101 FOR SOFFIT DETAILS.
- 9 DEDUCTIVE ALTERNATE NO. 2: REPLACE CEILING MOUNTED FIXTURE WITH LED LIGHT FIXTURE (SUNPARK 150WRD). CONNECT TO EXISTING LIGHT CIRCUIT.
- 10 BASE BID: PROVIDE NEW CEILING MOUNTED LIGHT FIXTURES (TRULY GREEN SOLUTIONS LED ECO PANEL). CONNECT TO EXISTING ROOM LIGHTING CIRCUIT.
- 11 PROVIDE NEW RECEPTACLES. RE-USE EXISTING RECEPTACLE CIRCUIT.

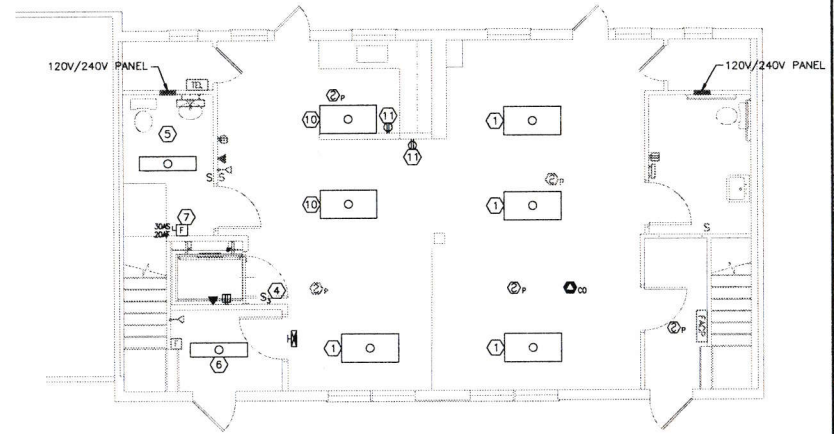
**DEMOLITION KEYED NOTES:**

- 1 SURFACE MOUNTED JUNCTION BOXES CONNECTED BY SURFACE MOUNTED RACEWAY. UNKNOWN LOAD. VERIFY CIRCUIT AND RE-ROUTE CIRCUIT AS NECESSARY FOR NEW WALL LOCATIONS.
- 2 RELOCATE EXIT SIGN. SEE PROPOSED PLAN FOR NEW LOCATION. MOUNT AT HEIGHT TO AVOID SPRINKLER PIPING.
- 3 TEMPORARILY REMOVE DEVICES FOR FIREPROOFING WORK IN STAIRWELL WALL.
- 4 RELOCATE FIRE ALARM DEVICES. SEE PROPOSED PLAN FOR NEW LOCATION.
- 5 RELOCATE LIGHT FIXTURE TO NEW WALL. SEE PROPOSED PLAN FOR NEW LOCATION.
- 6 BASE BID: RELOCATE LIGHT FIXTURE TO AVOID NEW STAIR AND ELEVATOR PARTITIONS.
- 7 BASE BID: HALLWAY LIGHT SWITCHES AND FIXTURE TO REMAIN.



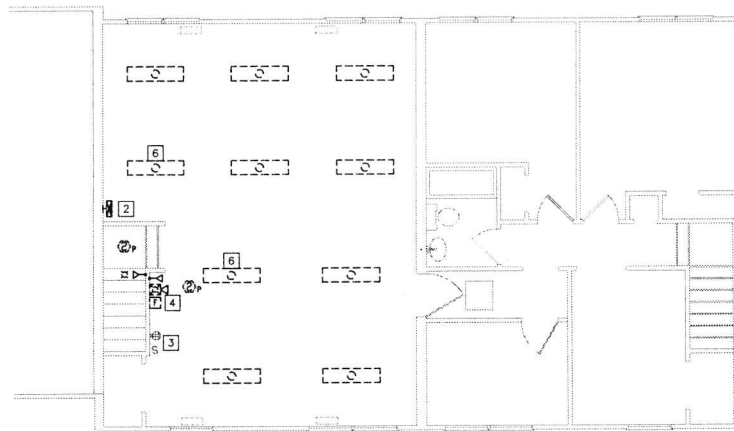
FIRST FLOOR ELECTRICAL FLOOR PLAN (DEMO)

SCALE: 1/4" = 1'-0"



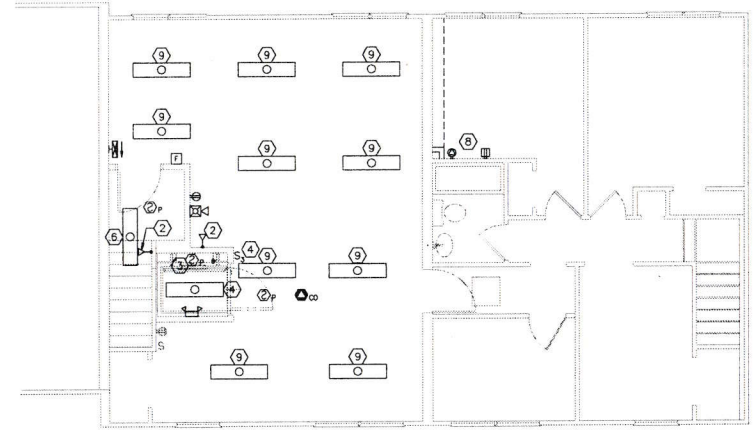
FIRST FLOOR ELECTRICAL FLOOR PLAN (PROPOSED)

SCALE: 1/4" = 1'-0"



SECOND FLOOR ELECTRICAL FLOOR PLAN (DEMO)

SCALE: 1/4" = 1'-0"



SECOND FLOOR ELECTRICAL FLOOR PLAN (PROPOSED)

SCALE: 1/4" = 1'-0"



Scale: 1/4" = 1'-0"



PLEASE NOTE: THIS DOCUMENT MAY NOT ACCURATELY REPRESENT THE FINAL DOCUMENT. ONLY AN ENGINEER, ARCHITECT OR SURVEYOR SIGNED, SEALED AND DATED PAPER COPY PROVIDED BY THIS OFFICE, MAY BE UTILIZED FOR BIDDING OR CONSTRUCTION PURPOSES.



2#1004 Sheet  
Portland Maine Draft  
05/10/17  
ColbyCompany.com

PORTLAND HOUSING AUTHORITY PORTLAND, MAINE	
PHA RIVERTON HEAD START BUILDING 14, UNITS 102 AND 104	
ELECTRICAL FLOOR PLANS	
PROJECT NO. 218.021.001	DRAWING NO. E-101
ISSUED FOR BID	JMB MRL 05/10/17
DESCRIPTION	EWN AFF 1 DATE
DATE	02/28/17
DES BY	JMB
OWN BY	JLH
CKD BY	MRL
SHEET	16 OF 16