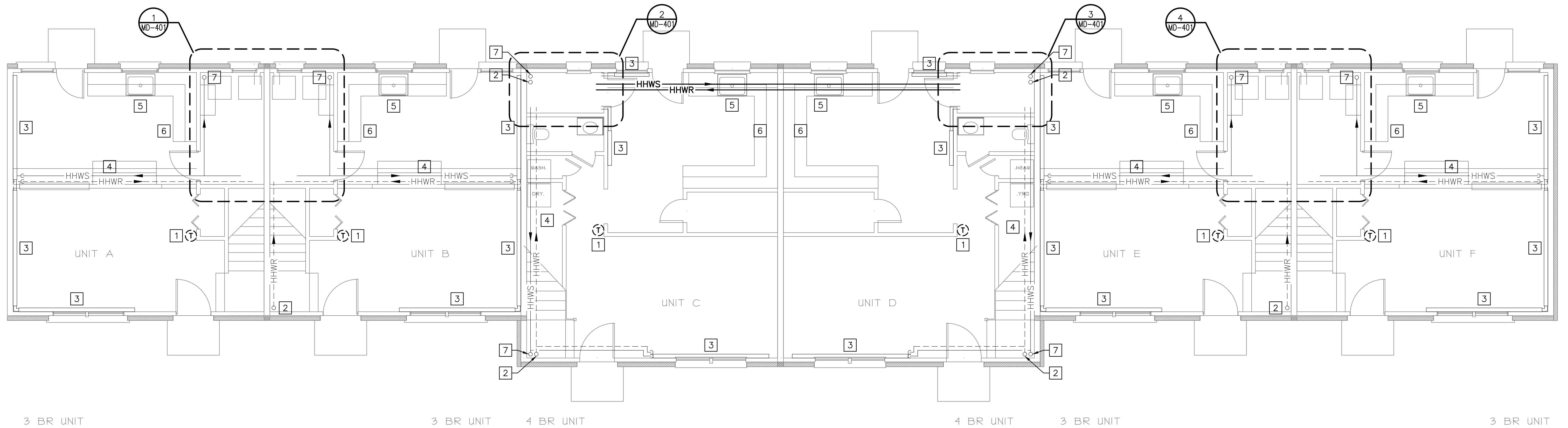


NOTES:

1. SEE SHEET M-001 FOR LEGEND, ABBREVIATIONS AND GENERAL NOTES.
2. SCOPE OF WORK REPRESENTED IS TYPICAL FOR BUILDINGS 12,17,25.
3. EXISTING HHWS&R MAINS SHOWN OUTSIDE OF UTILITY ROOMS ARE IN AN EXISTING SOFFIT AT THE CEILING.

DEMOLITION KEYED NOTES:

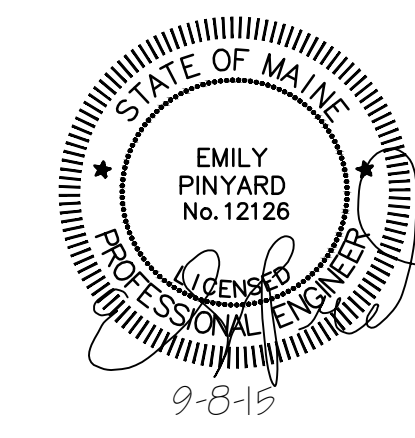
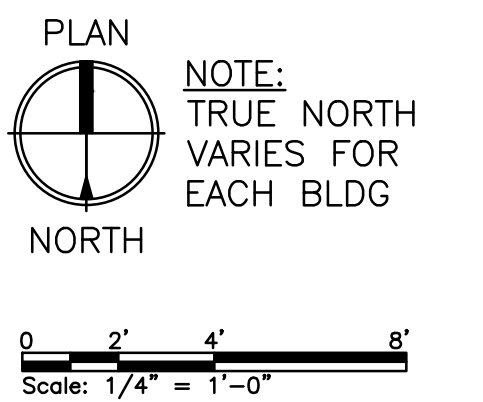
- 1 REMOVE THERMOSTAT AND LEAVE WIRING IN PLACE, IF COMPATIBLE WITH NEW CONTROLLER.
- 2 HHWR RISER FROM SECOND FLOOR TO REMAIN.
- 3 HOT WATER BASEBOARD RADIATOR TO REMAIN.
- 4 HHWS&R PIPES TO REMAIN WITHIN SOFFIT.
- 5 KITCHEN SINK TO REMAIN.
- 6 GAS STOVE TO REMAIN.
- 7 HHWS RISER TO SECOND FLOOR TO REMAIN.



MECHANICAL DEMOLITION PLAN

SCALE: 1/4" = 1'-0"

PLANS REPRESENT A TYPICAL BUILDING CONFIGURATION. NOT ALL BUILDINGS ARE COMPLETELY IDENTICAL. FIELD VERIFY ALL CONDITIONS PRIOR TO PERFORMING ANY WORK.



				PORTLAND HOUSING AUTHORITY PORTLAND, MAINE	
				RIVERTON BOILER REPLACEMENTS BUILDING NOS 12,17,25	
				MECHANICAL DEMOLITION PLAN	
0	ISSUED FOR CONSTRUCTION	CSS	ERP	9-8-15	
REV	DESCRIPTION	DWN	APP	DATE	
PLEASE NOTE: THIS DOCUMENT MAY NOT ACCURATELY REPRESENT THE FINAL DOCUMENT. ONLY AN ENGINEER, ARCHITECT OR SURVEYOR SIGNED, SEALED AND DATED PAPER COPY, PROVIDED BY THIS OFFICE, MAY BE UTILIZED FOR BIDDING OR CONSTRUCTION PURPOSES.		ANSI D		PROJECT NO.	DRAWING NO.
Colby Company engineering		47A York Street Portland, Maine 04101 207.553.7753 colbycoengineering.com		218.011.001	MD-101
		DATE: 9-8-15		SHEET	6 OF 17
		DES BY: ERP			
		DWN BY: CSS			
		CKD BY: MIF			

X:\218 Portland Housing Authority\218.011.001 - Riverton Boiler Replacements\Drawings\Phase 2\Sheets\MD-101.dwg - 9/8/2015 8:57 AM - CRAIG SMITH