

NOTES:

- SEE SHEET M-001 FOR LEGEND, ABBREVIATIONS AND GENERAL NOTES.
- SCOPE OF WORK REPRESENTED IS TYPICAL FOR BUILDINGS 12,17,25.

WALL-MOUNTED CONDENSING BOILER SCHEDULE

UNIT NO	BLDG NOs (#)	SERVICE	FUEL	INPUT (MBH)	HEATING CAPACITY (MBH)	LWT (°F)	DELTA T (°F)	AFUE (%)	VENT CONNECTION (IN/OUT)	SUPP/RET CONN	GAS CONNECTION	MANUFACTURER AND MODEL (1)	NOTES
B-#-1	12,17,25	HHW/DHW	NAT GAS	199	185	160	20	95	3"	1 1/2"	1/2"	LOCHINVAR KNIGHT WHN199	1,2
B-#-2	12,17,25	HHW/DHW	NAT GAS	199	185	160	20	95	3"	1 1/2"	1/2"	LOCHINVAR KNIGHT WHN199	1,2

- NOTES:
- PROVIDE MANUFACTURER'S CONDENSATE NEUTRALIZER.
  - PROVIDE MANUFACTURER'S BACNET COMPATIBLE CONTROLLER.

EXPANSION TANK SCHEDULE

UNIT NO	BLDG NOs (#)	SERVICE	TYPE	MIN PRESS (PSIG)	MAX OPER PRESS (PSIG)	TANK VOL (GALS)	TANK ACCEPT VOL (GALS)	DIA (IN)	HEIGHT (IN)	SHIP WEIGHT (LBS)	MANUFACTURER AND MODEL (1)	NOTES
ET-#-1	12,17,25	HHW	BLADDER	40	150	15	10	16	24	64	WATTS DETA-30	1
ET-#-2	12,17,25	DHW	BLADDER	40	150	3.5	2.1	10	14	22	WATTS DETA-5	

- NOTES:
- PROVIDE 4-INCH HOUSEKEEPING PAD FOR EXPANSION TANK.

INDIRECT-FIRED DOMESTIC WATER HEATER SCHEDULE

UNIT NO	BLDG NOs (#)	TYPE	TOTAL STORAGE (GAL)	1ST HR RECOVERY (GPH)	BOILER WATER FLOW RATE (GPM)	BOILER FLUID	BOILER EWT (°F)	HEAT EX PD (FT)	STORAGE TEMP (°F)	MANUFACTURER AND MODEL (1)	NOTES
DWH-#-1	12,17,25	STAINLESS STEEL	80	330	12	WATER	180	9.1	140	HTP SUPERSTOR ULTRA SSU-80	1

- NOTES:
- PROVIDE 4-INCH HOUSEKEEPING PAD FOR WATER HEATER.

CIRCULATOR PUMP SCHEDULE

UNIT NO	BLDG NOs (#)	SERVICE	TYPE	FLUID	GPM	HEAD (FT)	MOTOR SIZE	V/PH/HZ	MANUFACTURER AND MODEL (1)	NOTES
HWP-#-1	12,17,25	HHW	INLINE CIRCULATOR	WATER	30	25	1/2 HP	230/1/60	B&G ECOCIRC XL 55-45	1
HWP-#-2	12,17,25	HHW	INLINE CIRCULATOR	WATER	30	25	1/2 HP	230/1/60	B&G ECOCIRC XL 55-45	1
HWP-#-3	12,17,25	DHW	INLINE CIRCULATOR	WATER	12	15	270 WATTS	120/1/60	B&G NRF-45 #103404	2
DHWP-#-1	12,17,25	DHWR	INLINE CIRCULATOR	WATER	6	8	125 WATTS	120/1/60	B&G NBF-33 #103351LF	3
BP-#-1	12,17,25	B-1	INLINE CIRCULATOR	WATER	20	50		120/1/60	GRUNDFOS UPS-26-99FC	4
BP-#-2	12,17,25	B-2	INLINE CIRCULATOR	WATER	20	50		120/1/60	GRUNDFOS UPS-26-99FC	4

- NOTES:
- PUMP SHALL HAVE ECM DRIVE.
  - PUMP SHALL HAVE A 3-SPEED MOTOR.
  - PUMP SHALL BE BRONZE AND LISTED FOR POTABLE WATER.
  - PUMP SHALL BE SUPPLIED BY BOILER MANUFACTURER.

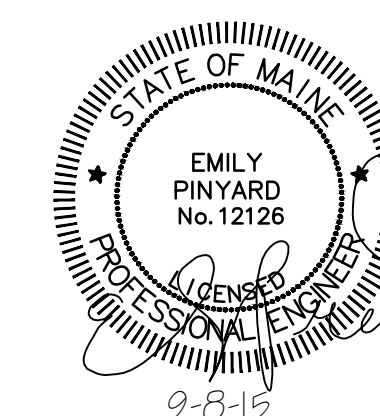
AIR SEPARATOR SCHEDULE

UNIT NO	BLDG NOs (#)	SERVICE	SIZE (IN)	FLOW (GPM)	MANUFACTURER AND MODEL (1)	NOTES
AS-#-1	12,17,25	HHW	2-1/2	30	B&G IAS-2-1/2	-

- NOTES:
- 

KEYED NOTE:

(1) MANUFACTURERS NAME AND MODEL NUMBER ARE USED FOR DESCRIPTIVE PURPOSES ONLY AND ARE INTENDED TO INDICATE THE STANDARD OF MATERIAL OR ARTICLES REQUIRED. DESIGN IS PREDICATED AROUND LISTED MANUFACTURERS AS NOTED ON SCHEDULES AND IS NOT INTENDED TO LIMIT THE CONTRACTOR TO ONE MANUFACTURER.



				PORTLAND HOUSING AUTHORITY PORTLAND, MAINE			
				RIVERTON BOILER REPLACEMENTS BUILDING NOs 12,17,25			
				MECHANICAL DETAILS			
0	ISSUED FOR CONSTRUCTION	CSS	ERP	9-8-15			
REV	DESCRIPTION	DWN	APP	DATE			
PLEASE NOTE: THIS DOCUMENT MAY NOT ACCURATELY REPRESENT THE FINAL DOCUMENT. ONLY AN ENGINEER, ARCHITECT OR SURVEYOR SIGNED, SEALED AND DATED PAPER COPY, PROVIDED BY THIS OFFICE, MAY BE UTILIZED FOR BIDDING OR CONSTRUCTION PURPOSES.				47A York Street Portland, Maine 04101 207.533.7753 colbycoengineering.com		PROJECT NO. 218.011.001	DRAWING NO. <b>M-601</b>
SIZE: ANSI D		DATE: 9-8-15		DES BY: ERP		SHEET 13 OF 17	
DWN BY: CSS		CKD BY: MIF					