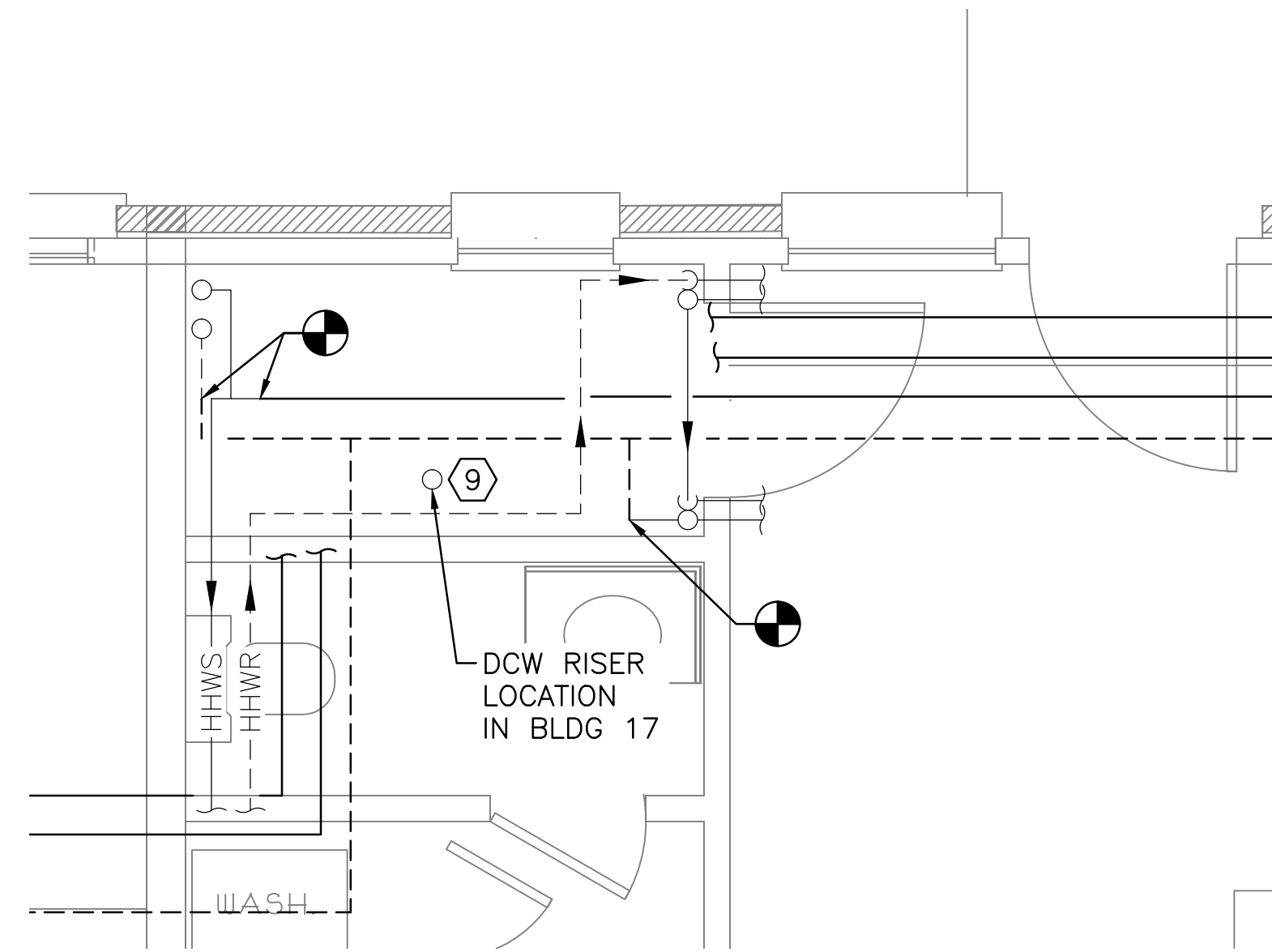
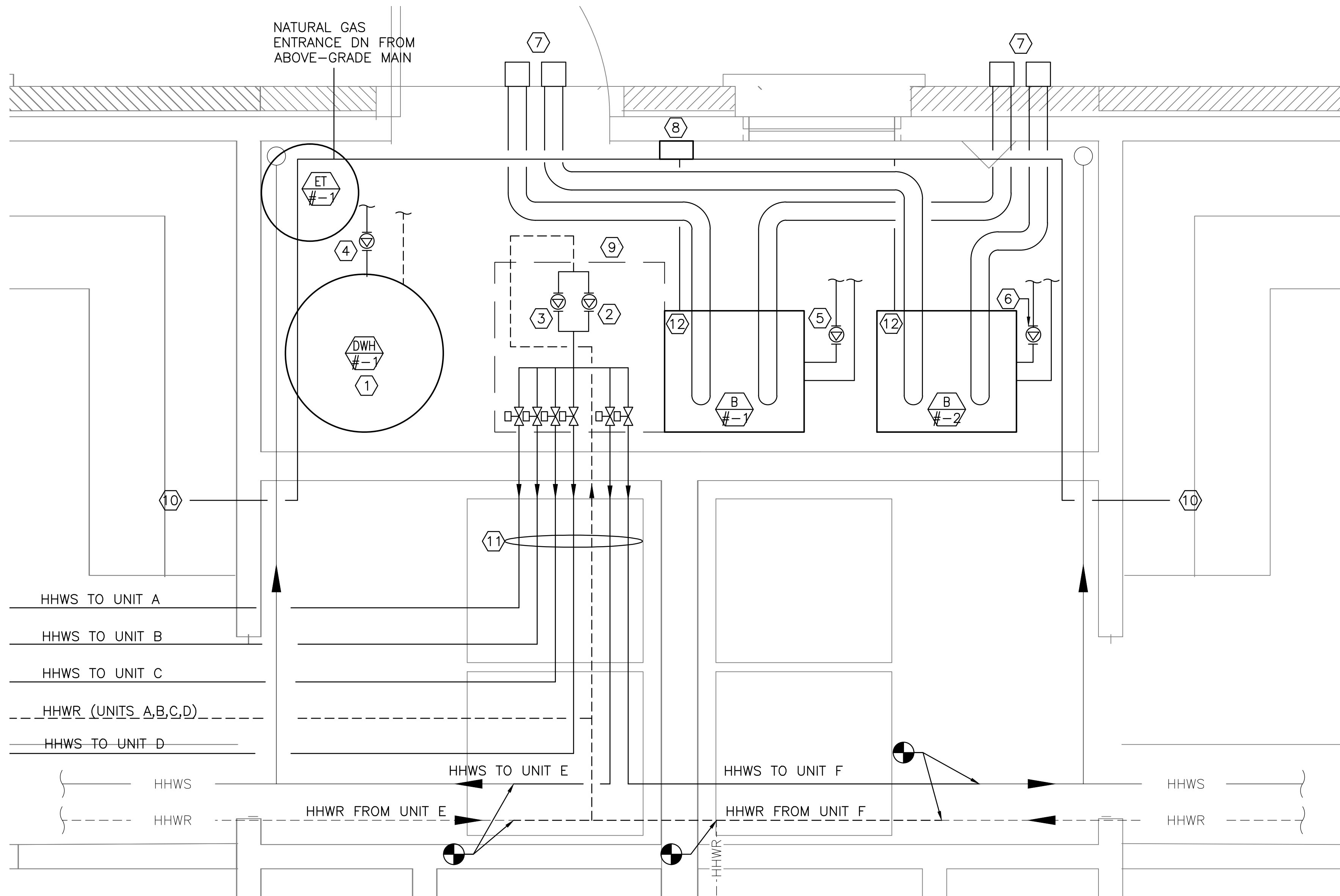


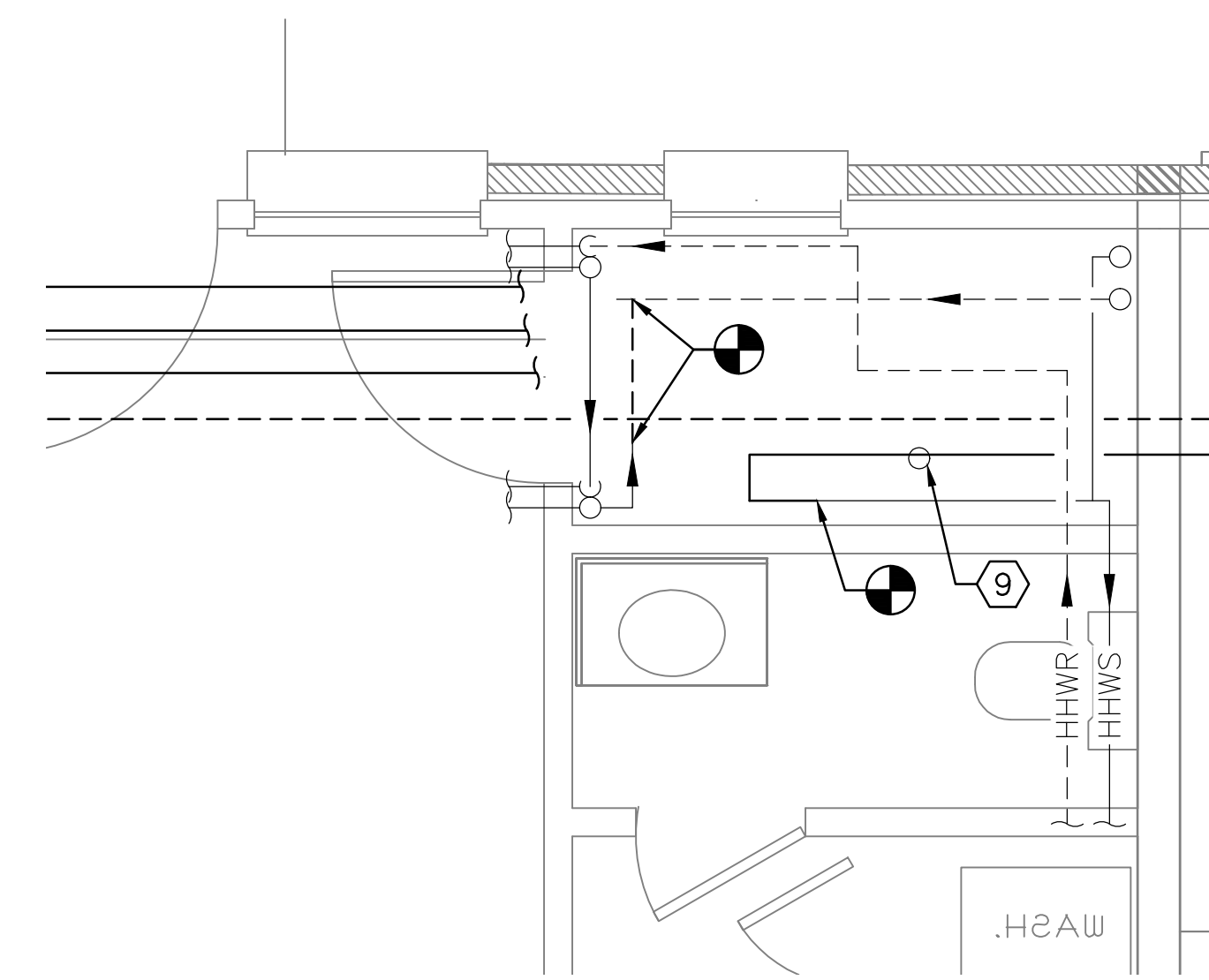
1 PART PLAN
M-401 SCALE: 1/2" = 1'-0" REF. DWG. = M-101



2 PART PLAN
M-401 SCALE: 1/2" = 1'-0" REF. DWG. = M-101



3 PART PLAN
M-401 SCALE: 1/2" = 1'-0" REF. DWG. = M-101



4 PART PLAN
M-401 SCALE: 1/2" = 1'-0" REF. DWG. = M-101

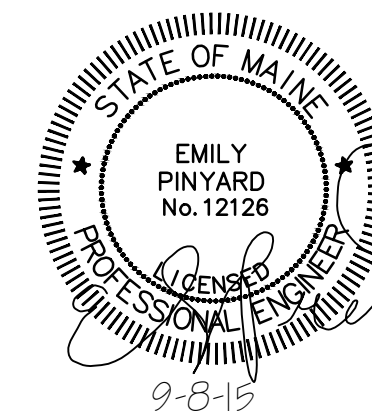
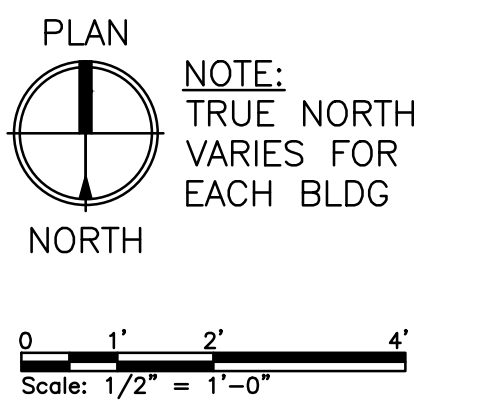
NOTES:

- SEE SHEET M-001 FOR LEGEND, ABBREVIATIONS AND GENERAL NOTES.
- SCOPE OF WORK REPRESENTED IS TYPICAL FOR BUILDINGS 12,17,25.
- PLUMBING WORK IS SHOWN ON M-102. REFER TO ARCHITECTURAL DRAWINGS FOR NEW CEILING DETAILS.
- COMPLETE HYDRONIC PIPING IS NOT SHOWN FOR CLARITY. SEE M-502 FOR PIPE SCHEMATIC.
- INSTALL NEW GAS PIPING AS NEEDED FOR A COMPLETE INSTALLATION. REFER TO MS-101 AND MD-401.

KEYED NOTES:

- INSTALL THERMOSTATIC MIXING VALVE AND EXPANSION TANK FOR DHW (ET-#-2). DEVICES NOT SHOWN FOR CLARITY, TO BE LOCATED BY CONTRACTOR IN FIELD.
- NEW HHW CIRCULATING PUMP, HWP-#-1.
- NEW HHW CIRCULATING PUMP, HWP-#-2.
- NEW DHW CIRCULATING PUMP, HWP-#-3.
- NEW BOILER CIRCULATING PUMP, BP-#-1.
- NEW BOILER CIRCULATING PUMP, BP-#-2.
- INSTALL SEPARATE 3-INCH BOILER COMBUSTION AIR INTAKES AND VENTS OR A BOILER MANUFACTURER-SUPPLIED CONCENTRIC VENT. TERMINATE AT WALL WITH CAP.
- PROVIDE (2) TEKMAR ZONE CONTROL PANELS, 4 ZONES EACH. TEKMAR 313 CONTROLLER OR EQUIVALENT.
- MAINTAIN ADEQUATE CLEARANCE TO DCW SERVICE ENTRANCE, BFP AND VALVES. 28"x28" SHOWN.
- GAS PIPING TO EXISTING GAS RANGES.
- HYDRONIC PIPING, ZONE VALVES, AND PUMPS TO BE SUSPENDED FROM CEILING.
- GAS CONNECTION TO NEW BOILER.

PLANS REPRESENT A TYPICAL BUILDING CONFIGURATION. NOT ALL BUILDINGS ARE COMPLETELY IDENTICAL. FIELD VERIFY ALL CONDITIONS PRIOR TO PERFORMING ANY WORK.



PLEASE NOTE: THIS DOCUMENT MAY NOT ACCURATELY REPRESENT THE FINAL DOCUMENT. ONLY AN ENGINEER, ARCHITECT OR SURVEYOR SIGNED, SEALED AND DATED PAPER COPY, PROVIDED BY THIS OFFICE, MAY BE UTILIZED FOR BIDDING OR CONSTRUCTION PURPOSES.

REV	DESCRIPTION	DWN	APP	DATE
0	ISSUED FOR CONSTRUCTION	CSS	ERP	9-8-15

SIZE: ANSI D	DATE: 9-8-15	DES BY: ERP	DWN BY: CSS	CKD BY: MIF
--------------	--------------	-------------	-------------	-------------

PORTLAND HOUSING AUTHORITY PORTLAND, MAINE	
RIVERTON BOILER REPLACEMENTS BUILDING NOS 12,17,25	
MECHANICAL PART PLANS	
PROJECT NO. 218.011.001	DRAWING NO. M-401
SHEET 10 OF 17	