

LEGEND

- 60 □ (4) NON-FUSED SAFETY SWITCH
NEMA ENCLOSURE
AMPERE RATING
- (4) F 60AS
40AF FUSED SAFETY SWITCH, TOP NUMBER INDICATES
SWITCH AMPERE RATING, LOWER NUMBER INDICATES
FUZE RATING
NEMA ENCLOSURE
- ⊕E DUPLEX RECEPTACLE, NEMA 5-20R
E - INSTALLED ON EMERGENCY CIRCUIT
IG - ISOLATED GROUND
S - SWITCHED RECEPTACLE
- ⏏ WP GFCI DUPLEX RECEPTACLE, NEMA 5-20R
WEATHER PROOF
- ⊕ POWER RECEPTACLE, 240 VOLT NEMA
CONFIGURATION AS NOTED
- PANELBOARD, NORMAL POWER
- JUNCTION BOX
- M OL MANUAL MOTOR STARTER, TOGGLE OPERATED,
SINGLE PHASE. 1,2 OR 3 POLE AS REQUIRED
OVERLOAD PROTECTION
- ⊕ DOWN LIGHT
- HOME RUN
- S₀ SINGLE POLE TOGGLE SWITCH
INDICATES CONTROLLED FIXTURE
- S₃ 3-WAY TOGGLE SWITCH
- TEL TELEPHONE SERVICE ENTRANCE CABINET
- ⊕ P SMOKE DETECTOR, CEILING MOUNTED
A - AUXILIARY CONTACT
AS - AIR SAMPLING
P - PHOTOELECTRIC SMOKE
E - WIRED FOR ELEVATOR RECALL
BT - BEAM TRANSMITTER
BR - BEAM RECEIVER
- ⊕ CO GAS DETECTOR
CO - CARBON MONOXIDE
CO2 - CARBON DIOXIDE
NO2 - NITROGEN DIOXIDE

LINE TYPES

- EXISTING
- NEW
- - - - - DEMOLITION
- — — — — MATCHLINE
- · - · - · - · - PART PLAN OUTLINE

ABBREVIATIONS

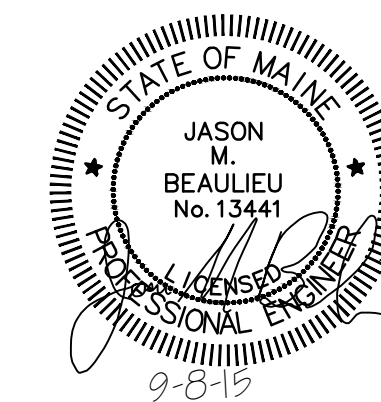
- | | |
|-------|--|
| AMP | AMPERE |
| AFF | ABOVE FINISHED FLOOR |
| AFG | ABOVE FINISHED GRADE |
| AHJ | AUTHORITY HAVING JURISDICTION |
| AIC | AMPERE INTERRUPTING CAPACITY |
| AWG | AMERICAN WIRE GAUGE |
| BFG | BELOW FINISHED GRADE |
| BLDG | BUILDING |
| BOS | BOTTOM OF STEEL |
| C | CONDUIT |
| CATV | CABLE TELEVISION |
| CB | CIRCUIT BREAKER |
| CCTV | CLOSED CIRCUIT TELEVISION |
| CPT | CONTROL POWER TRANSFORMER |
| CT | CURRENT TRANSFORMER |
| CU | COPPER |
| DACT | DIGITAL ALARM COMMUNICATOR TRANSMITTER |
| DB | DIRECT BURIED |
| DISC | DISCONNECT |
| DN | DOWN |
| EMT | ELECTRICAL METALLIC TUBING |
| EWC | ELECTRIC WATER COOLER |
| EWH | ELECTRIC WATER HEATER |
| EQP | EQUIPMENT |
| EXIST | EXISTING |
| FAA | FIRE ALARM ANNUNCIATOR |
| FACP | FIRE ALARM CONTROL PANEL |
| FBO | FURNISHED BY OTHERS |
| FLR | FLOOR |
| FWE | FURNISHED WITH EQUIPMENT |
| FU | FUSE |
| G | GROUND |
| GEN | GENERATOR |
| GFCI | GROUND FAULT CIRCUIT INTERRUPT |
| CLG | CEILING |
| GND | GROUND |
| HP | HORSEPOWER |
| HTR | HEATER |
| IG | ISOLATED GROUND |
| IMC | INTERMEDIATE METAL CONDUIT |
| K | KILO |
| KCMIL | THOUSAND CIRCULAR MILS |
| KV | KILOVOLT |
| KVA | KILOVOLT-AMPERE |
| KVAR | KILOVOLT-AMPERE REACTIVE |
| KW | KILOWATT |
| KWH | KILOWATT-HOUR |
| LA | LIGHTNING ARRESTER |
| LTC | LIGHTING |
| MC | METAL CLAD |
| MCB | MAIN CIRCUIT BREAKER |
| MFR | MANUFACTURER |
| MI | MINERAL INSULATED |
| MLO | MAIN LUG ONLY |
| MNS | MASS NOTIFICATION SYSTEM |
| MTD | MOUNTED |
| MV | MEDIUM VOLTAGE |
| NC | NORMALLY CLOSED |
| NEC | NATIONAL ELECTRICAL CODE |
| NEG | NEGATIVE |
| NEUT | NEUTRAL |
| NIC | NOT IN CONTRACT |
| NO | NORMALLY OPEN |
| NTS | NOT TO SCALE |
| PF | POWER FACTOR |
| PH | PHASE |
| PVC | POLYVINYL CHLORIDE |
| RM | ROOM |
| RSC | RIGID STEEL CONDUIT |
| RTD | RESISTANCE TEMPERATURE DETECTOR |
| SN | SOLID NEUTRAL |
| SPD | SURGE PROTECTIVE DEVICE |
| STP | SHIELDED TWISTED PAIR |
| STT | SHIELDED TWISTED TRIPLET |
| SWBD | SWITCHBOARD |
| SWGR | SWITCHGEAR |
| TOS | TOP OF STEEL |
| TANSF | TRANSFORMER |
| V | VOLT |
| VA | VOLT-AMPERE |
| VAR | VOLT-AMPERE REACTIVE |
| WM | WATT METER |
| WP | WEATHER PROOF |
| XFMR | TRANSFORMER |
| XP | EXPLOSION PROOF |

GENERAL NOTES

- ALL GENERAL NOTES, SYMBOL LISTS AND DETAILS ARE TO BE CONSIDERED AS APPLICABLE TO ALL ELECTRICAL DRAWINGS FOR THIS PROJECT. SYMBOLS AND ABBREVIATIONS SHOWN ON THIS SHEET ARE FOR REFERENCE ONLY AND DO NOT INDICATE THEIR INCORPORATION IN THE DESIGN.
- ALL WORK SHALL BE PERFORMED IN ACCORDANCE WITH NFPA-70, NATIONAL ELECTRICAL CODE (NEC) 2014.
- REMOVE ALL ELECTRICAL EQUIPMENT COMPLETELY WHERE INDICATED. REMOVE ALL CIRCUIT CONDUCTORS, SWITCHES, LIGHTING FIXTURES AND MISCELLANEOUS APPLIANCES BACK TO ENERGIZING SOURCE OR JUNCTION BOX WHERE MULTIPLE EQUIPMENT IS POWERED.
- ALL CONDUCTOR MATERIAL, INCLUDING WIRING, PANELBOARD BUSES, TRANSFORMER WINDINGS, AND GROUNDING SHALL BE COPPER. ALUMINUM CONDUCTORS SHALL NOT BE ALLOWED.
- UNLESS OTHERWISE NOTED, WIRING SHALL BE 2#12 AWG CONDUCTORS AND #12 GND. HOME RUNS FED FROM 20A-1P CIRCUITS IN EXCESS OF 100 FEET SHALL BE #10 AWG.
- LIGHTING TOGGLE SWITCHES SHALL BE COMMERCIAL SPECIFICATION GRADE 277/120 VOLT, SIDE WIRED AND PROVIDED WITH GROUNDING SCREW. LEVITON, PASS AND SEYMOUR OR APPROVED EQUAL. COORDINATE COLOR WITH OWNER.
- CONVENIENCE RECEPTACLES SHALL BE COMMERCIAL SPECIFICATION GRADE GROUNDING TYPE NEMA 5-20R, SIDE WIRED. LEVITON, PASS AND SEYMOUR OR APPROVED EQUAL.
- ALL EQUIPMENT DISCONNECTS AND MANUAL MOTOR STARTERS ARE PROVIDED BY ELECTRICAL CONTRACTOR UNLESS NOTED AS FURNISHED WITH EQUIPMENT (FWE). MOUNT ALL DISCONNECTS AND MOTOR STARTERS IN AN ACCESSIBLE LOCATION WITHIN SIGHT OF THE LOAD SERVED.
- UNLESS OTHERWISE NOTED CONVENIENCE RECEPTACLES SHALL BE MOUNTED 18-INCHES AFF AND LIGHTING TOGGLE SWITCHES 48-INCHES AFF.
- ALL PENETRATIONS THROUGH FLOORS, RATED WALLS AND PARTITIONS SHALL BE SEALED WITH UL APPROVED FIRE SEALANT MATERIAL TO MAINTAIN THE RATING OF SEPARATION.
- EQUIPMENT CONNECTIONS ARE SHOWN FOR BASIS-OF-DESIGN PRODUCTS. CONTRACTOR SHALL COORDINATE ALL EQUIPMENT CONNECTIONS - INCLUDING DISCONNECTING MEANS, OVERCURRENT PROTECTION, AND WIRE SIZING - WITH SELECTED MANUFACTURER'S RECOMMENDED INSTRUCTIONS.
- CONTRACTOR SHALL PROVIDE ALL MOUNTING HARDWARE NECESSARY FOR A COMPLETE INSTALLATION. MOUNT EQUIPMENT AND ROUTE CONDUIT SO AS NOT TO INTERFERE WITH OPERATIONS SUCH AS OVERHEAD DOORS, DOOR SWINGS, ETC.
- MANUFACTURERS NAME AND MODEL NUMBERS ARE USED THROUGHOUT THE PROJECT FOR DESCRIPTIVE PURPOSES ONLY AND ARE INTENDED TO INDICATE THE STANDARD OF MATERIAL OR ARTICLES REQUIRED. DESIGN IS PREDICATED AROUND LISTED MANUFACTURERS AS NOTED ON SCHEDULES AND NOTES AND IS NOT INTENDED TO LIMIT THE CONTRACTOR TO ONE MANUFACTURER.

LOADCENTER REPLACEMENT SCOPE

- ALL EXISTING FEDERAL PACIFIC LOADCENTERS ARE TO BE REPLACED. EXISTING FEDERAL PACIFIC LOADCENTERS ARE MODEL NUMBER LX108-16.
- NEW LOADCENTERS SHALL BE HOMELINE HOM12L125GC OR APPROVED EQUAL.
- ALL APARTMENTS HAVE A FEDERAL PACIFIC LOADCENTER THAT SHALL BE REPLACED.



				PORTLAND HOUSING AUTHORITY PORTLAND, MAINE			
				RIVERTON BOILER REPLACEMENTS BUILDING NOS 12,17,25			
				ELECTRICAL LEGEND, ABBREVIATIONS AND GENERAL NOTES			
0	ISSUED FOR CONSTRUCTION	JMB	MRL	9-8-15			
REV	DESCRIPTION	DWN	APP	DATE			

PLEASE NOTE: THIS DOCUMENT MAY NOT ACCURATELY REPRESENT THE FINAL DOCUMENT. ONLY AN ENGINEER, ARCHITECT OR SURVEYOR SIGNED, SEALED AND DATED PAPER COPY, PROVIDED BY THIS OFFICE, MAY BE UTILIZED FOR BIDDING OR CONSTRUCTION PURPOSES.

Colby Company
engineering
47A York Street
Portland, Maine 04101
207.533.7753
colbycoengineering.com

SIZE: ANSI D
DATE: 9-8-15
DES BY: JMB
DWN BY: JMB
CKD BY: BCT

PROJECT NO.
218.011.001
SHEET
14 OF 17

E-001