

RIVERTON PARK COMMUNITY HEALTH CENTER
59 RIVERTON DRIVE

GENERAL DISCRIPTION OF PROJECT

THE FIRST FLOOR SPACE WILL BE USED AS A PROJECT HEALTH CENTER. IT WOULD SERVE THE RESIDENTS OF RIVERTON PARK AS A SOURCE OF COUNSELING AND ADVICE REGARDING HEATH CARE AND NUTRITION. NO MEDICAL PROCEDURES WILL BE DONE ON SITE. IT IS SIMILAR TO A DOCTOR'S OFFICE IN FUNCTION.

THE RENOVATIONS WOULD CONSIST OF INSTALLING A UNIVERSAL DESIGN BATH ROOM, AKA 'HANDICAP ACCESSIBLE BATH ROOM'; AN EXAM ROOM FOR OCCASIONAL, PRELIMINARY EXAMS IF NEEDED; AN AREA FOR WAITING, LITERATURE DISPLAYS AND A TABLE TO SEAT 4 TO 6 PEOPLE FOR FAMILY CONFERENCES, ETC.

THE SECOND FLOOR WOULD BE USED FOR STORAGE ONLY.

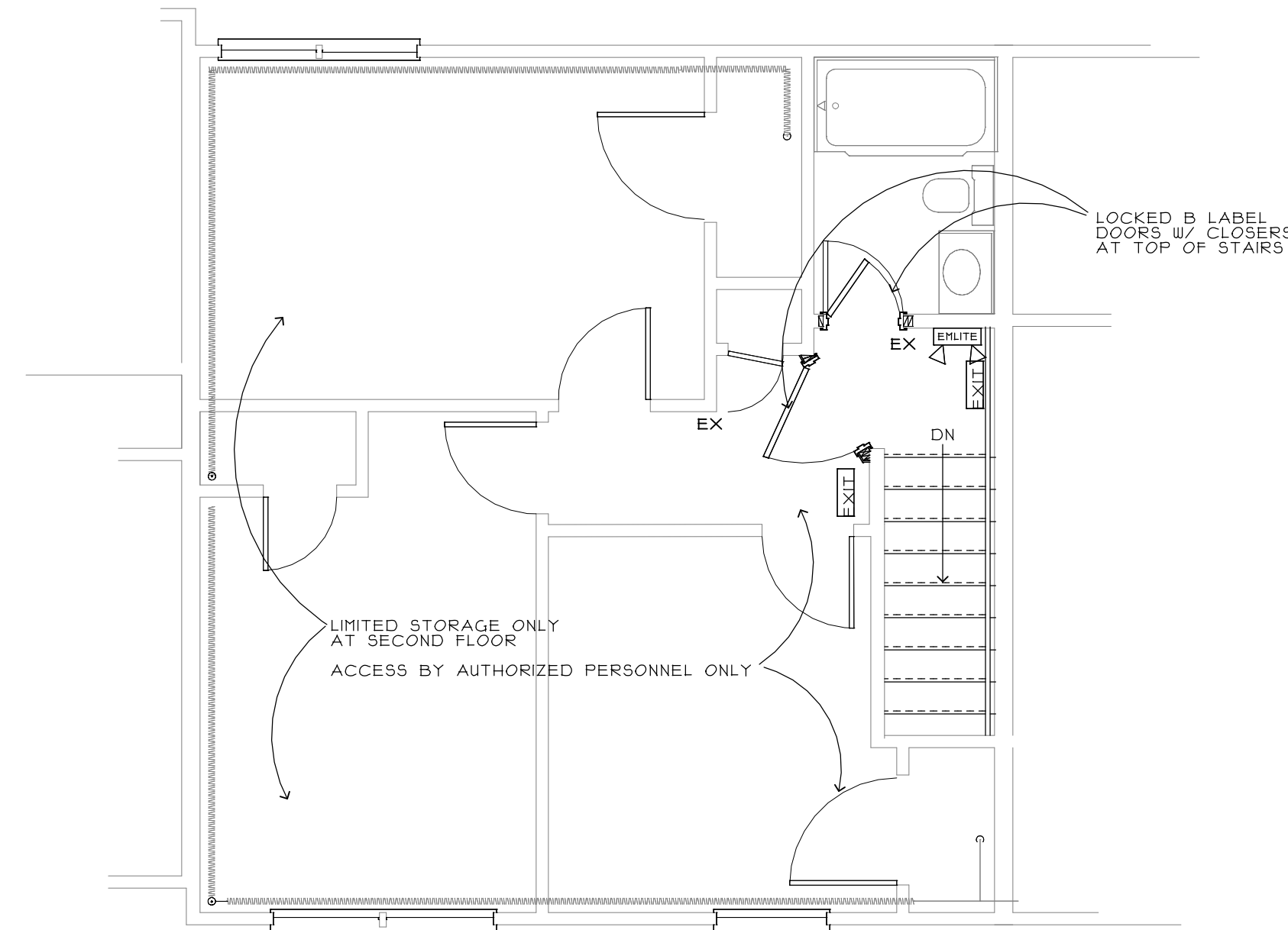
FIRE CLASSIFICATIONS AND SUMMARY

USE GROUP-BUSINESS
MUTIPLE OCCUPANCY, SEPARATED
OCCUPANCY (6.1.14.4)
EXISTING ONE HOUR SEPARATION

CONSTRUCTION TYPE
5B UNPROTECTED

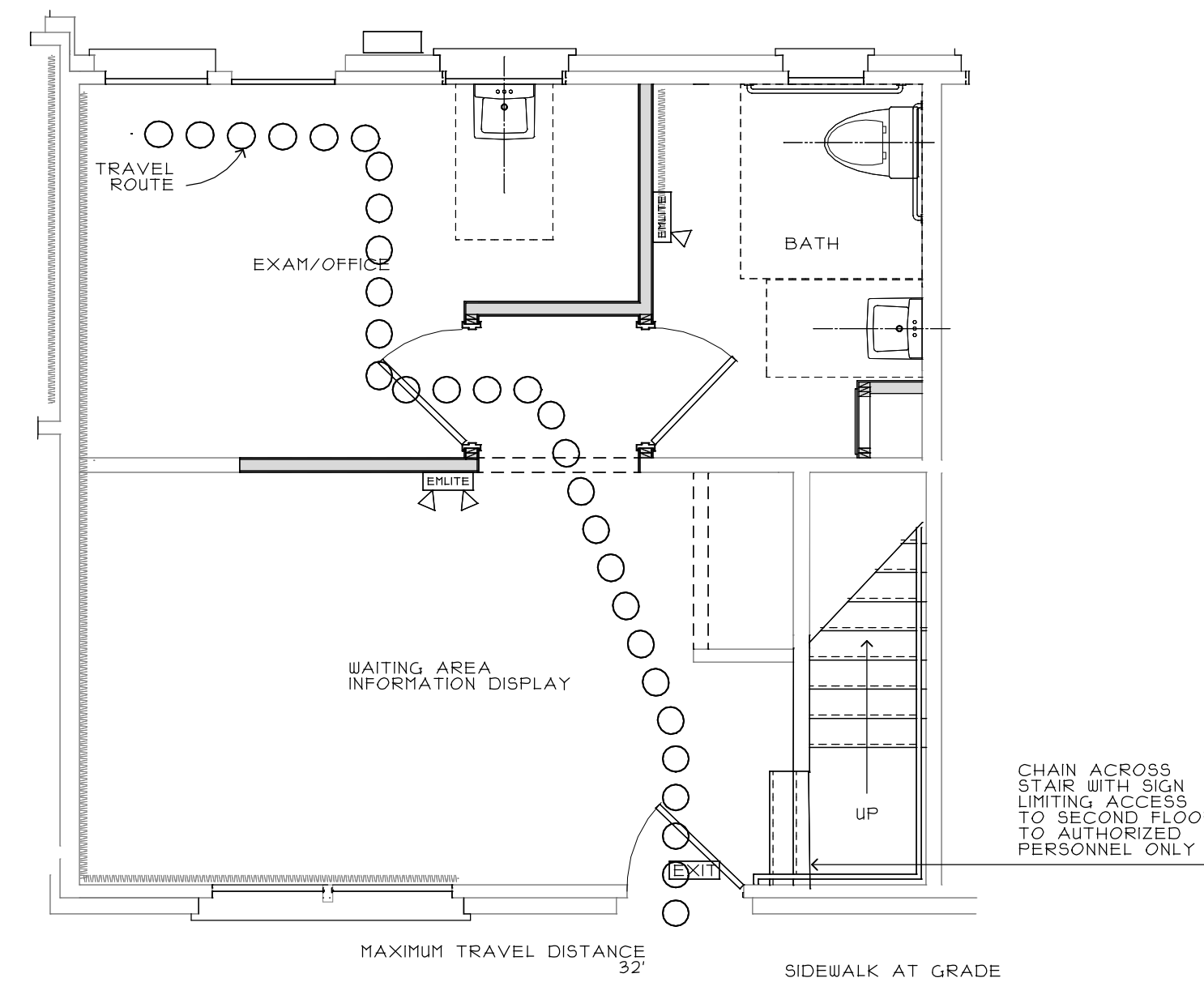
OCCUPANT LOAD
FIRST FLOOR-
THE OCCUPANT LOAD WOULD BE 5 BASED ON 100 SF PER PERSON DIVIDED INTO 447SF OF FLOOR SPACE
NFPA TABLE 7.3.1.2
SECOND FLOOR AUTHORIZED ACCESS FOR LIMITED STORAGE

MEANS OF EGRESS
ONE EXIT.
NFPA SECTION 38.2.4.3-OCCUPANT LOAD LESS THAN 100; TRAVEL DISTANCE IS LESS THAN 100'; EXITS DIRECTLY ON GRADE TO THE SIDEWALK; SINGLE LEVEL USE ONLY.



FIRE DEPARTMENT SUMMARY INFORMATION
SECOND FLOOR PLAN

SCALE: 1/4"=1'-0"



MOUNT SIGN WITH CENTERLINE AT 40" ABOVE FIN FLOOR
FIRE DEPARTMENT SUMMARY INFORMATION
FIRST FLOOR PLAN

SCALE: 1/4"=1'-0"

LIFE SAFETY SCHEDULE					
LOCATION	AREA	MANUFACTURER	PART NO.	LAMPS/LAMPS	ITEM
ALL AREAS	CEILINGS	PROGRESS	F4025B	2-30W T4-1/2" LL	SURFACE MOUNT EXIT LIGHT
ALL AREAS	WALL	KIDDE	2101124	HARDWIRED INTER-CONNECTED S.D.	SMOKE DETECTOR
ALL AREAS	WALL	PROGRESS	F4025B	2-30W T4-1/2" LL	2 HEAD EMERGENCY LIGHT