

Window Schedule

Doors to be 36" x 80"

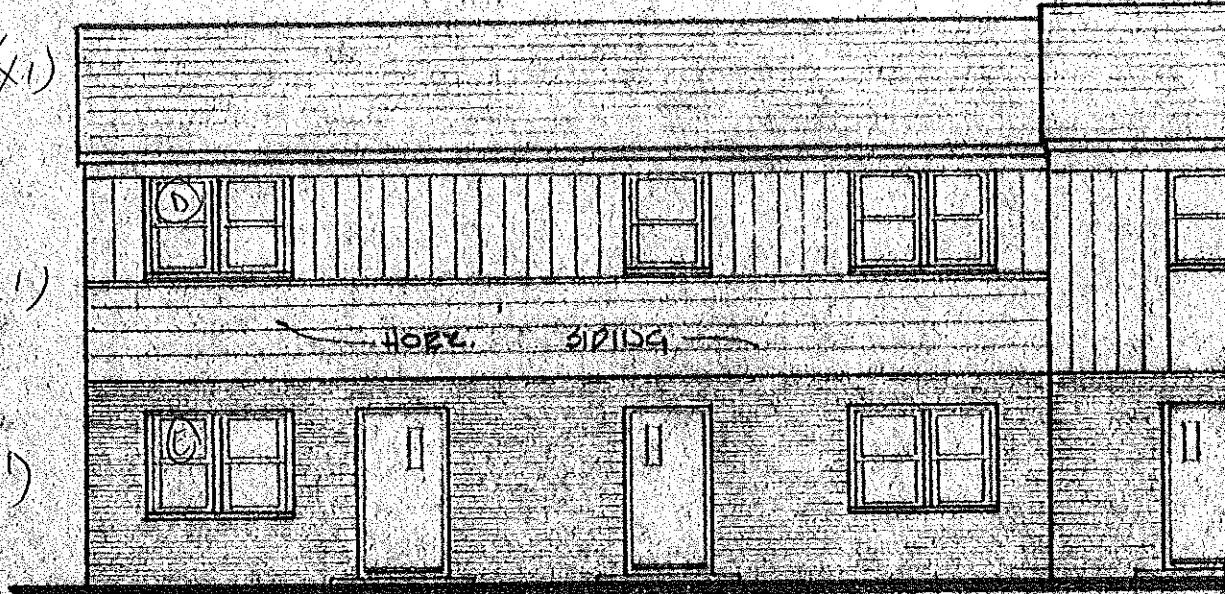
(A) 2'10 1/8" W
x
4'4 7/8" H (X1)

(B) 3'2 1/8" W
x
3'4 7/8" H (X1)

(C) 2'2 1/8" W
x
3'4 7/8" H (X1)

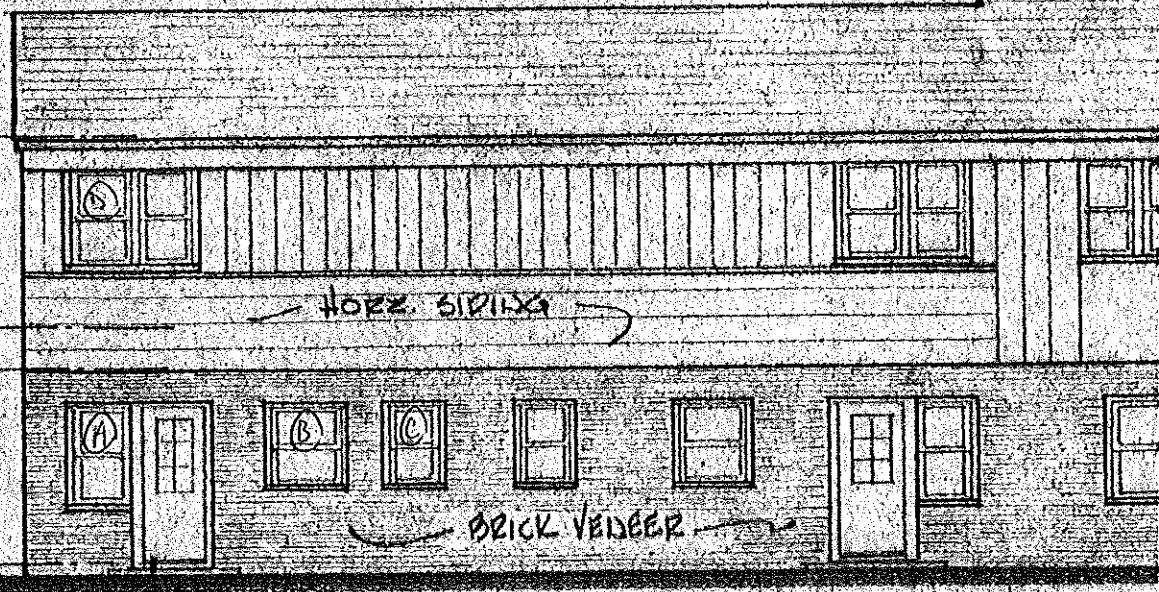
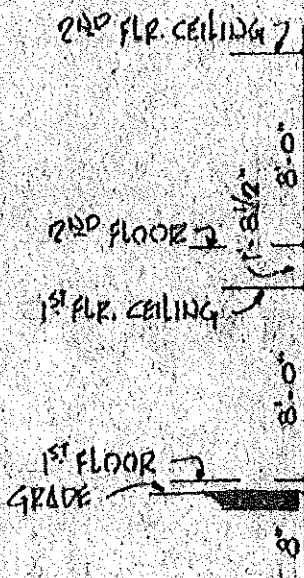
(D) 6'3 7/8" W
x
4'8 7/8" H (X2)

(E) 6'3 7/8" W
x
4'4 7/8" H (X1)



Front

See



Reverse

See