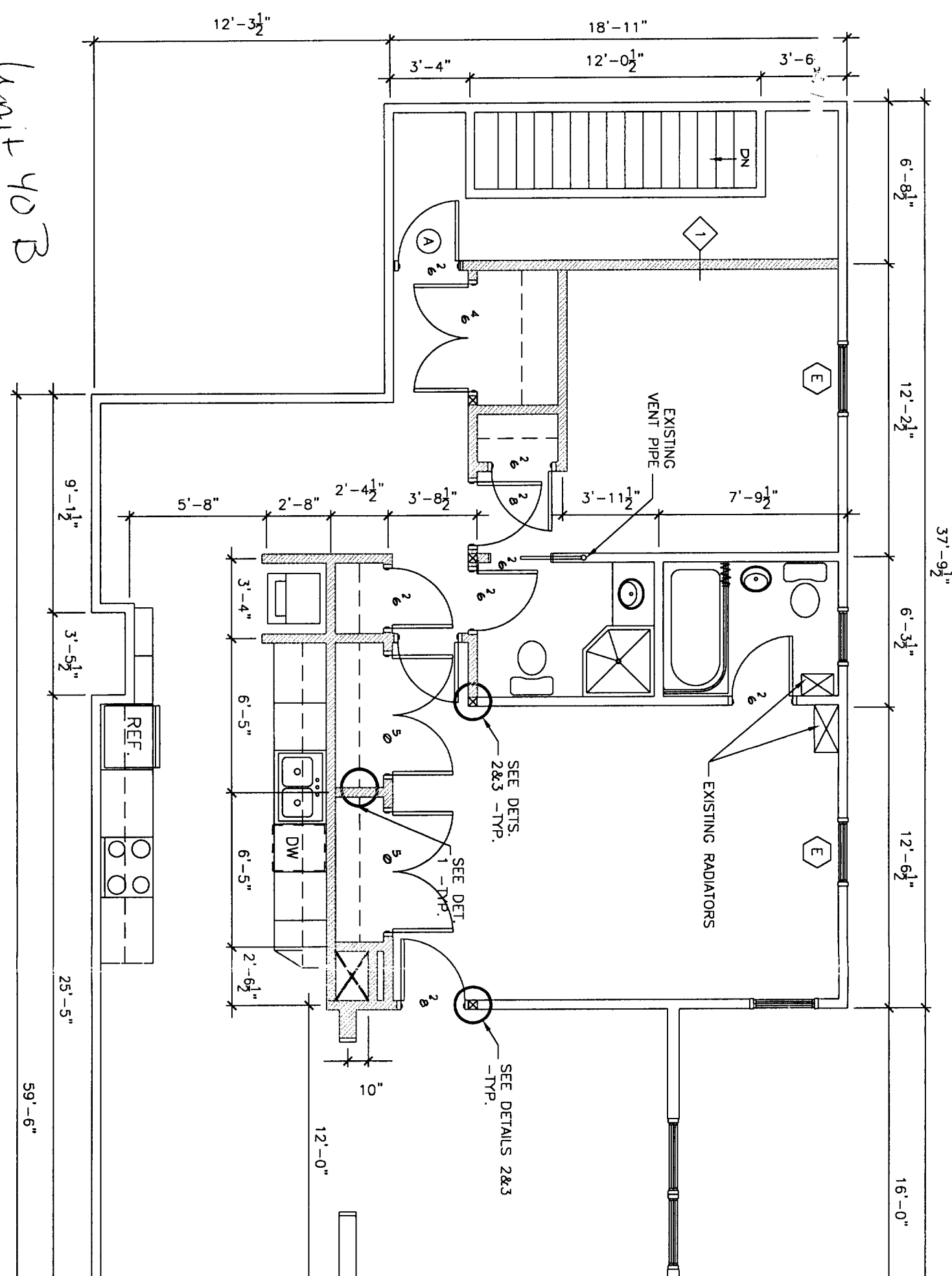
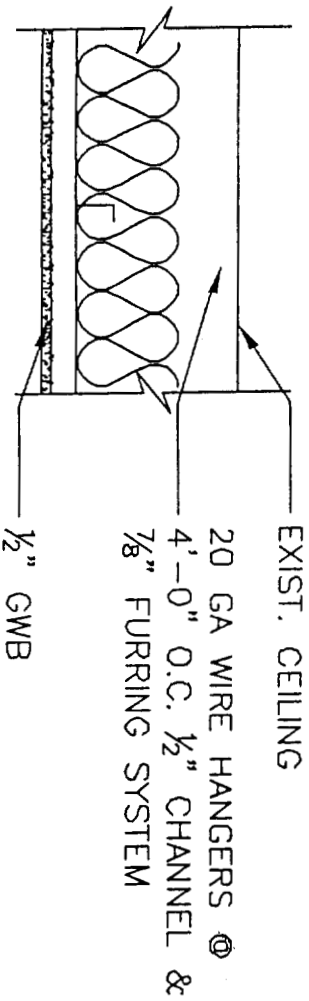


Unit 40B

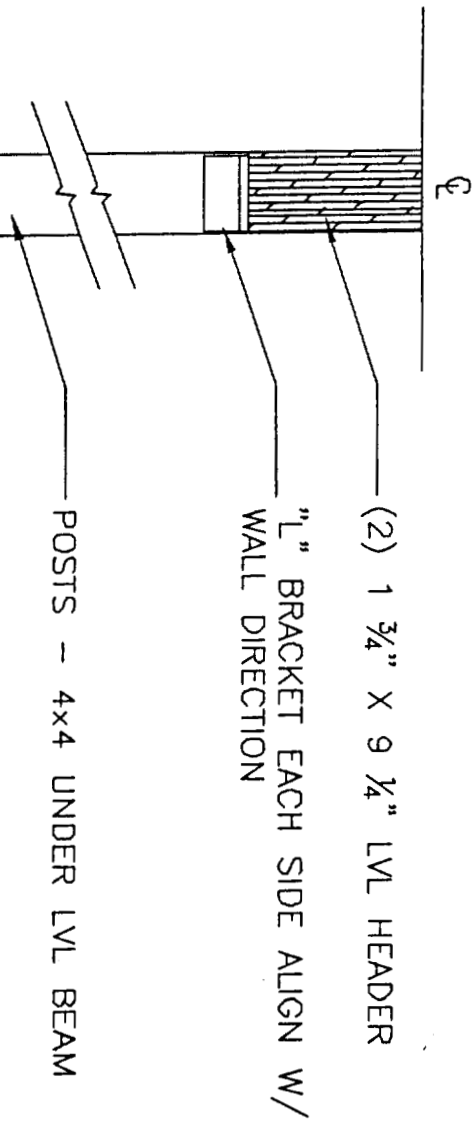


GENERAL NOTES

1. PATCH AND REPAIR EXISTING PLASTER AS REQUIRED FOR PAINTED FINISH - CARRY SKIM COAT TO NEAREST WALL INTERSECTION OR INSIDE CORNER
2. FINISH NEW GWB W/THREE (3) COATS JOINT COMPOUND FOR PAINTED FINISH
3. ALL INTERIOR WALLS, CEILINGS AND TRIM TO BE PRIMED AND PAINTED (2 COATS FINISH)
4. HARDWOOD FLOORS TO BE REFINISHED
5. COMPLY WITH BOCA 1999 FOR RATINGS
6. GYPSUM BOARD: TYPE X FC Ⓢ RATED PARTITIONS AND ASSEMBLIES (WALL TYPE 1)
7. EGRESS WINDOWS IN EACH BEDROOM 5.7 SF CLEAR OPENING



4 SUSPENDED GYPSUM BOARD CEILING DETAIL
1 1/2" = 1'-0"



2 SUPPORT POST & BEAM DETAIL
1 1/2" = 1'-0"

