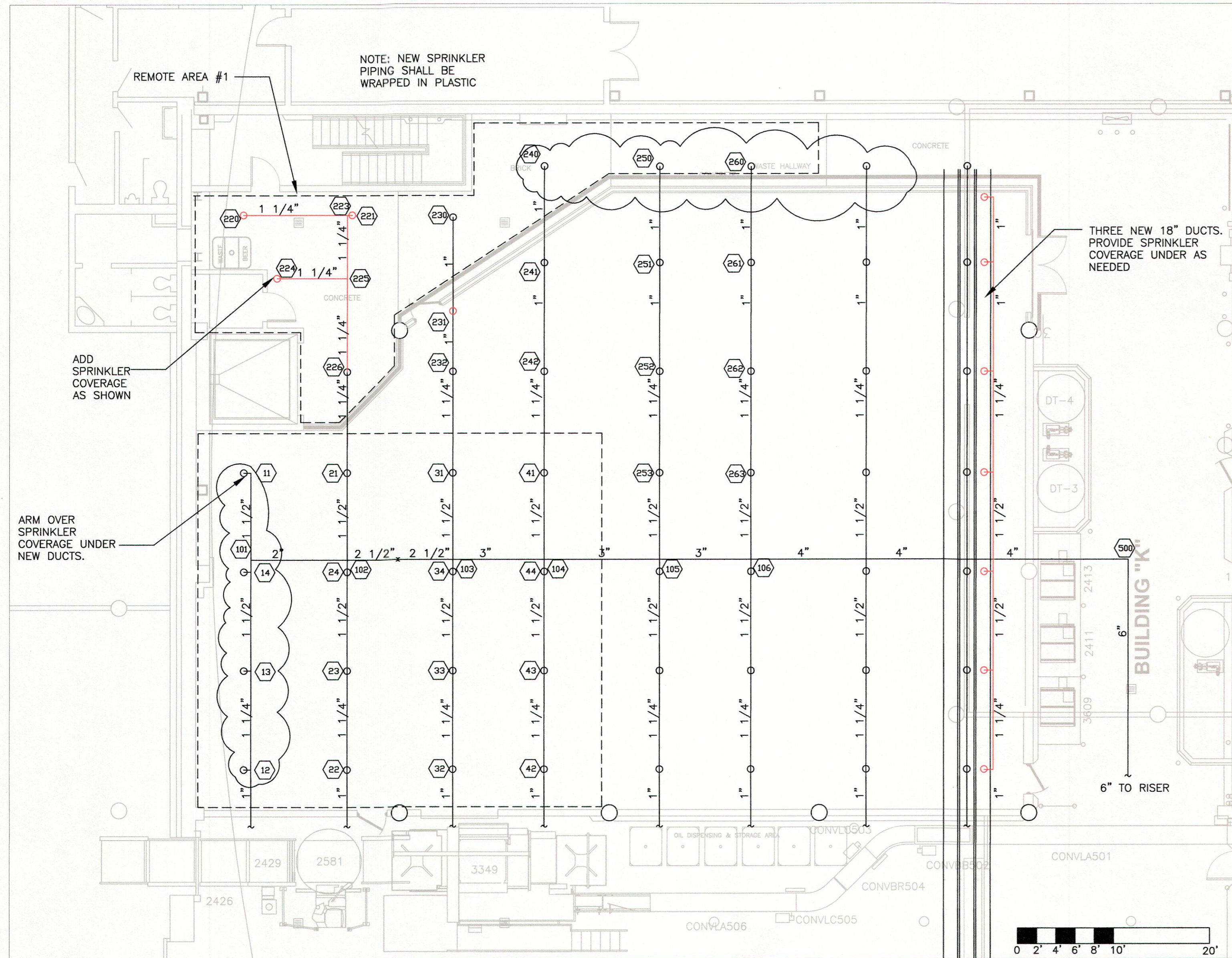


EQUIPMENT LIST			QTY.	PART NO.
MANUFAC.	PC. NO.			
RELIABLE	1	5.6K 1/2" NPT 165" UPRIGHT SPRINKLER HEAD	10	-----

NOTE: PROVIDE EXTRA SPRINKLER HEADS WRENCH AND BOX AS REQUIRED PER NFPA 13



PLAN VIEW
SCALE: 1/8" = 1'-0"

LEGEND

- EXISTING UPRIGHT SPRINKLER HEAD 5.6K
- NEW UPRIGHT SPRINKLER HEAD 5.6K
- ⊗ HYDRAULIC REFERENCE NODE
- SPRINKLER PIPING
- NEW SPRINKLER PIPING
- REMOTE AREA
- UPRIGHT SPRINKLER QUICK RESPONSE 5.6 K
- 165" 1/2" NPT

NOTE: NEW SPRINKLER SHALL MATCH EXISTING SPRINKLER IN TEMPERATURE, THERMAL RESPONSE AND "K" FACTOR. INSTALLING SPRINKLER CONTRACTOR SHALL CONFIRM PRIOR TO STARTING INSTALLATION.

GORTON'S HALLWAY - REMOTE AREA #1

CALC FILE:	
HYDRAULIC DATA:	
BASIS OF DESIGN: (PER FM DATA SHEETS)	
DENSITY	ACTUAL AREA OF COVERAGE
.2 GPM	790 (SQ FT)
TOTAL SPRINKLER QTY. ORIFICE	
SPRINKLERS	8 5.6K
OCCUPANCY: ORDINARY HAZARD GROUP 2	
SYSTEM DEMAND:	
PRESSURE:	57 PSI
WATER (GPM):	233 GPM (NOT INCLUDING HOSE STREAM)
HOSE STREAM:	500 GPM
REQUIREMENTS AT BASE OF RISER: 733PM @ 57 PSI	

GORTON'S LINE 8 - REMOTE AREA #2

CALC FILE:	
HYDRAULIC DATA:	
BASIS OF DESIGN: (PER FM DATA SHEETS)	
DENSITY	ACTUAL AREA OF COVERAGE
.2 GPM	1,633 (SQ FT)
TOTAL SPRINKLER QTY. ORIFICE	
SPRINKLERS	20 5.6K
OCCUPANCY: ORDINARY HAZARD GROUP 2	
SYSTEM DEMAND:	
PRESSURE:	60 PSI
WATER (GPM):	499 GPM (NOT INCLUDING HOSE STREAM)
HOSE STREAM:	500 GPM
REQUIREMENTS AT BASE OF RISER: 998PM @ 60 PSI	

GENERAL SPRINKLER NOTES.

- 1) ALL FIRE PROTECTION WORK SHALL BE DONE IN ACCORDANCE WITH THE LATEST EDITION OF THE STATE BUILDING CODE, LOCAL AMENDMENTS AND THE REFERENCED NATIONAL FIRE PROTECTION CODES INCLUDING NFPA 13.
- 2) ALL FIRE PROTECTION SYSTEM EQUIPMENT PIPING AND VALVES SHALL BE INSTALLED AND TESTED BY A LICENSED SPRINKLER CONTRACTOR AND EXPERIENCED IN THE INSTALLATION OF SPRINKLER SYSTEMS.
- 3) ALL PIPING, HANGERS AND EQUIPMENT IS SHOWN DRAMATICALLY THE ACTUAL ROUTING OF PIPING AND EXACT LOCATIONS OF HANGERS AND EQUIPMENT SHALL BE DETERMINED IN THE FIELD AND INSTALLED IN ACCORDANCE WITH ALL THE APPLICABLE CODES.
- 4) PROVIDE ACCESS TO ALL EQUIPMENT REQUIRING PERIODICAL SERVICE AND MAINTENANCE
- 5) PITCH ALL PIPING TO DRAIN. PROVIDE AN AUXILIARY DRAIN AT ALL LOW POINTS AS REQUIRED PER NFPA 13.
- 6) ALL PIPE AND HANGERS SHALL MEET NFPA 13
- 7) INSTALLING CONTRACTOR MUST COMPLETE "CONTRACTOR'S MATERIAL & TEST CERTIFICATE FOR ABOVE GROUND PIPING".
- 8) HYDROSTATIC TEST ALL "NEW" WORK AT 200 PSI FOR 2 HOURS WITH NO LOSS.
- 9) PROVIDE A SPRINKLER CABINET WITH SPARE HEADS OF EACH TYPE & WRENCH AS REQUIRED BY NFPA 13.
- 10) IT IS THE BUILDING OWNERS RESPONSIBILITY TO MAINTAIN THE SYSTEM IN ACCORDANCE WITH ALL CODES.

PIPING NOTES

- 1) APPLICATION: WET PIPE SPRINKLER SYSTEM.
- 2) ALL PIPE TO BE ASTM A795 OR A53 SCHD 40 BLACK IRON.
- 3) ALL 1" - 1 1/2" SCHD 40 PIPE, ALL 2" AND LARGER PIPE MAY BE SCHED 10 GROOVED.
- 4) ALL FITTING SHALL BE BLACK IRON.

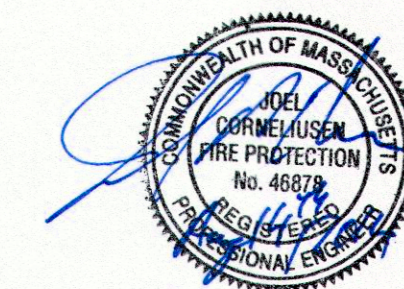
NOTES

HAZARD: GORTON'S LINE 8
 FLAMMABLE LIQUIDS: NONE
 CONSTRUCTION: NON-COMBUSTIBLE
 OCCUPANCY: ORDINARY HAZARD GROUP 2
 DENSITY: .20 GPM/2000SQ FT (ENTIRE ROOM)
 INSURANCE REQUIREMENTS: NONE
 HOSE: 500 GALLONS
 SYSTEM TYPE: WET PIPE
 WATER SUPPLY: CITY WATER SUPPLY

PROJECT SCOPE.

SPRINKLER:
 MODIFY THE EXISTING WET PIPE SPRINKLER SYSTEM TO ACCOMMODATE THE RENOVATIONS. PROVIDE FULL COVERAGE THROUGHOUT THE SPACE.

NOTE:
 INSTALLING SPRINKLER CONTRACTOR:
 FIRE EQUIPMENT INC
 SC#110119
 EXPIRES: 7/30/2015
 ENGINEER OR RECORD: JOEL CORNELIUSEN PE
 LICENSE # 46878



CONSULTANTS - ENGINEERING - CONTRACTORS
APPROVED: _____
NICET CERTIFIED ENGINEERING TECHNICIAN LEVEL
CERTIFICATE NO. _____
AUTOMATIC WET PIPE SPRINKLER SYSTEM MODIFICATION FOR
GORTON LINE 8
127 ROGERS STREET GLOUCESTER, MA
THIS DRAWING, DESIGN AND DATA CONTAINED HEREIN IS THE EXCLUSIVE PROPERTY OF FIRE EQUIPMENT, INC. AND IS NOT TO BE DISTRIBUTED TO OR USED BY OTHERS WITHOUT THE EXPRESSED WRITTEN CONSENT OF FIRE EQUIPMENT, INC.
SCALE: AS NOTED DATE: _____
DRAWN: CORNELIUSEN 20/JUNE/2014
ENGINEER: CORNELIUSEN 20/JUNE/2014
CHECKED: _____

FIRE EQUIPMENT INC
 Experts in Life Safety System Design and Service

88 Hicks Avenue
 Medford, MA. 02155
 MA CR # 000075
 Tel. (888) 296-1381
 Fax. (888) 296-1384
 Email: ENGINEERING@firefire.com
 WWW.firefire.com

SIZE	DRAWING NUMBER	REV. NO.
D	D-WB0114001-A	1

3			
2			
1	REVISED	14/AUGUST/2014	JC
0	ISSUED FOR APPROVAL	20/JUNE/2014	JC
REV.	DESCRIPTION	DATE	BY