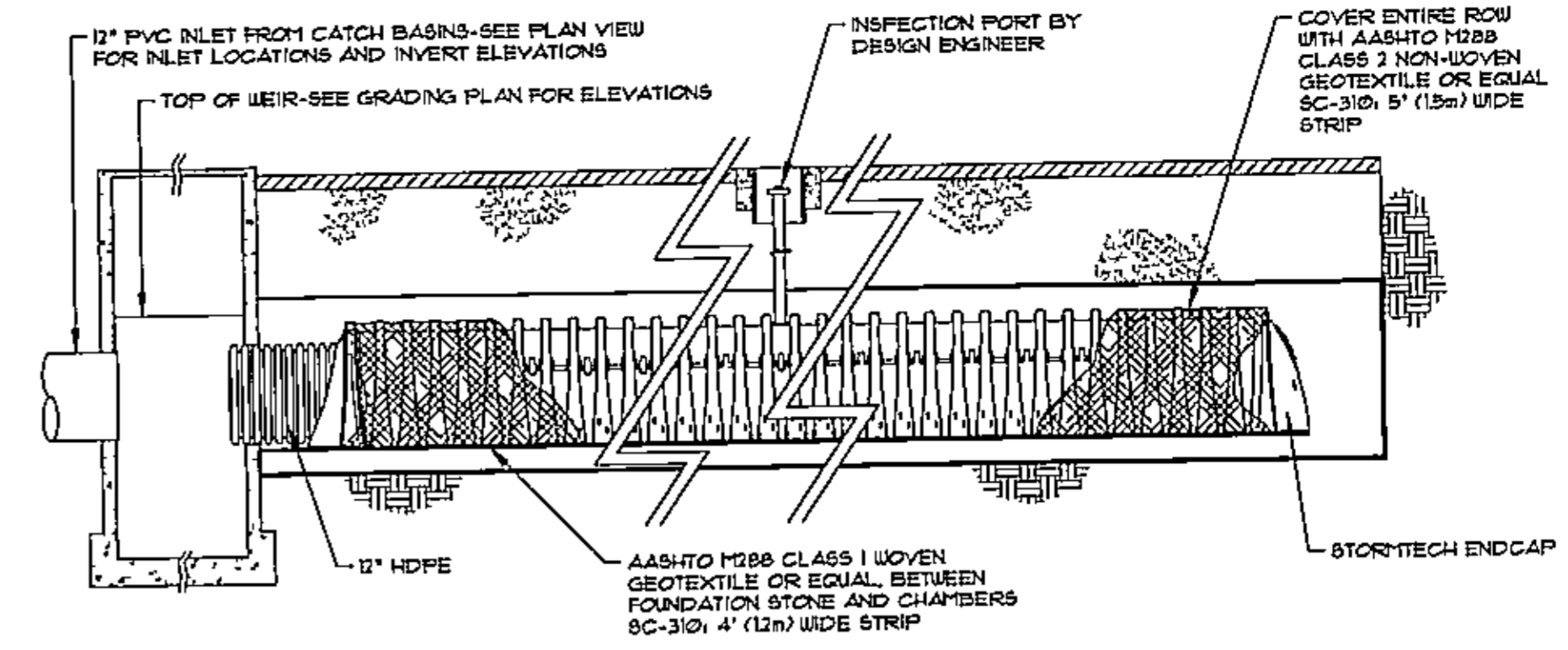
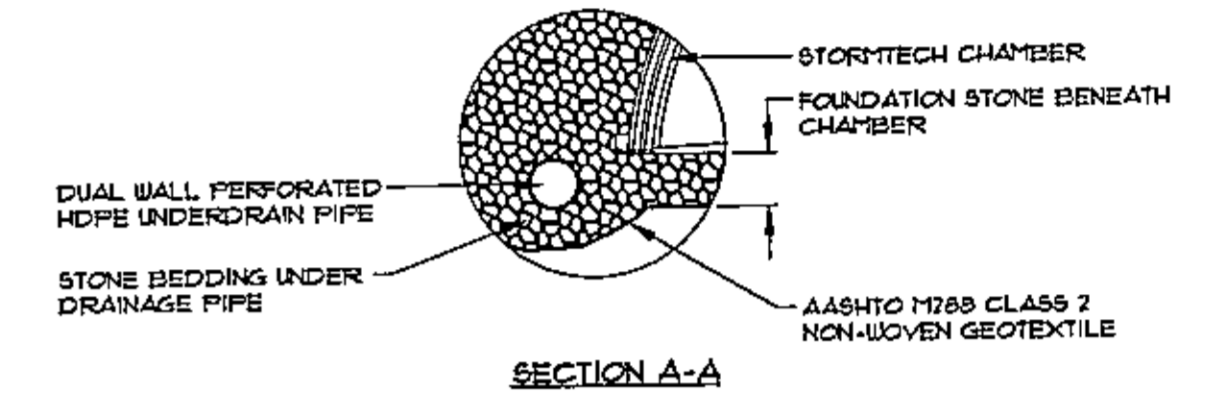


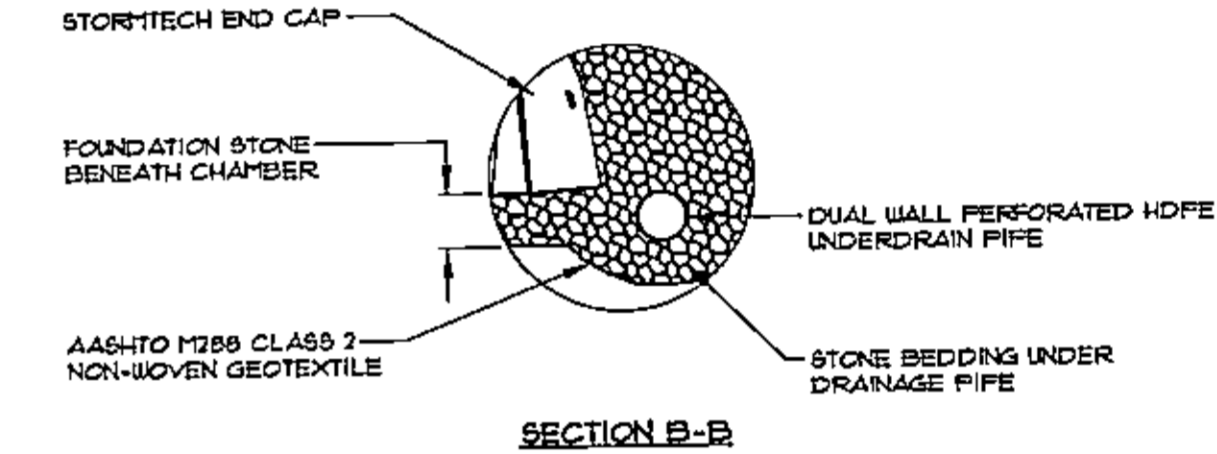
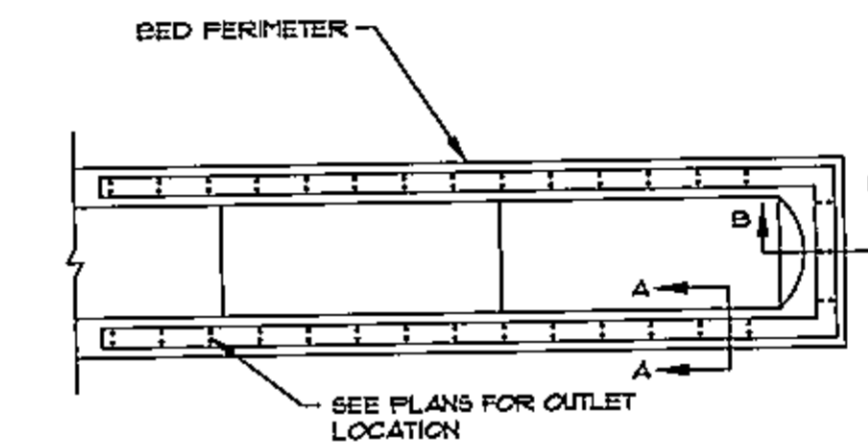
SC-310 INSPECTION PORT
NOT TO SCALE



ISOLATOR ROW PROFILE
NOT TO SCALE

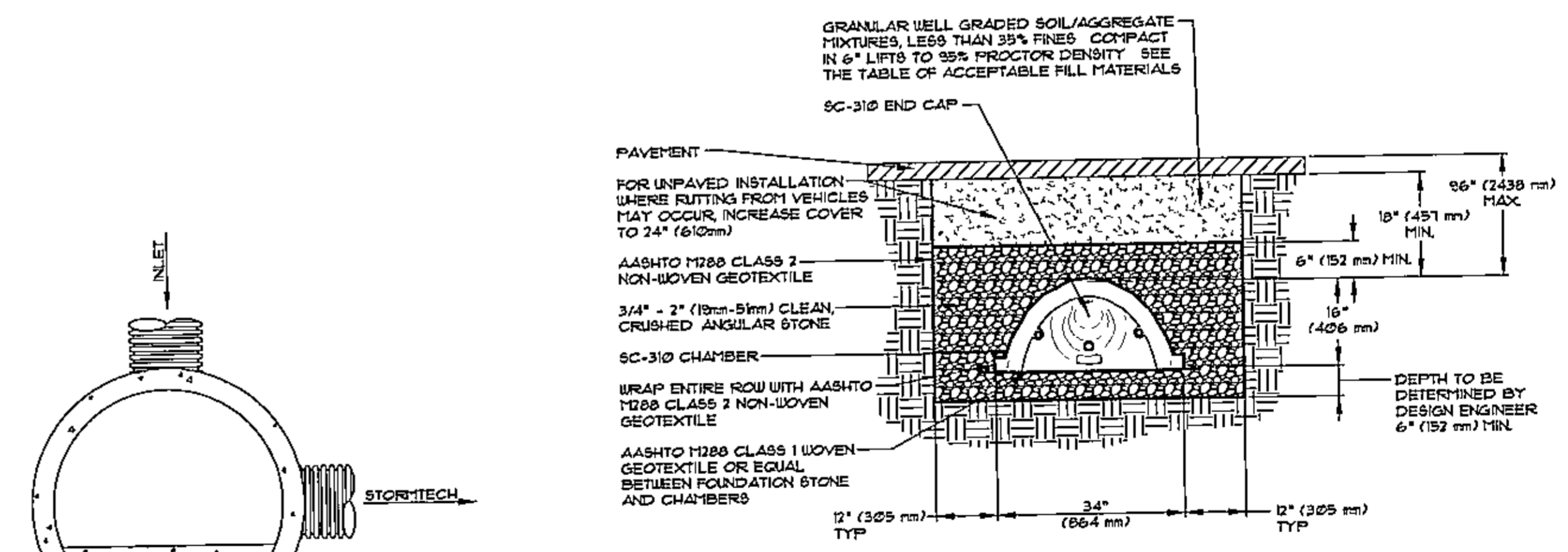


SECTION A-A



SECTION B-B

SC-310 UNDERDRAIN
NOT TO SCALE

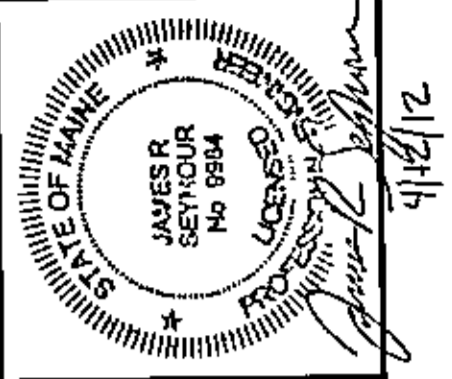


1. THE INSTALLED CHAMBER SYSTEM SHALL PROVIDE THE LOAD FACTORS SPECIFIED IN THE AASHTO LRFD BRIDGE DESIGN SPECIFICATIONS SECTION 12.2 FOR EARTH AND LIVE LOADS, WITH CONSIDERATION FOR IMPACT AND MULTIPLE VEHICLE PRESENCE.
2. CHAMBERS SHALL MEET ASTM F 2418-05 STANDARD SPECIFICATION FOR POLYPROPYLENE (PP) CORRUGATED WALL STORMWATER COLLECTION CHAMBERS.
3. THE DESIGN ENGINEER IS RESPONSIBLE FOR ENSURING THE REQUIRED BEARING CAPACITY OF SUBGRADE SOILS.
4. THIS SECTION DETAILS THE REQUIREMENTS NECESSARY TO SATISFY THE LOAD FACTORS SPECIFIED IN THE AASHTO LRFD BRIDGE DESIGN SPECIFICATIONS SECTION 12.2 FOR EARTH AND LIVE LOADS USING STORMTECH CHAMBERS.

- NOTES**
1. ALL PIPES FROM STORMTECH CHAMBERS AND OUTLETS SHALL BE HDPE 12" PIPE.
 2. SEE GRADING AND UTILITY PLAN SHEET 4 OF 9 FOR DIVERSION MANHOLE PIPE ORIENTATION AND INVERT AND WEIR ELEVATIONS.

DIVERSION MANHOLE DETAIL (TYPICAL)
NOT TO SCALE

SC-310 STANDARD CROSS SECTION
NOT TO SCALE



REV.	BY	DATE	STATUS
E	JRS	04/12/12	REVISED SITE PLAN/REMOVED COPPER DRIVETHRU
D	JRS	03/19/12	REVISED PER FINAL PLAN COMMENTS
C	JRS	03/08/12	SUBMITTED FOR FINAL PLAN REVIEW
B	JRS	07/10/12	RESUBMITTED FOR PRELIMINARY REVIEW
A	JRS	11/15/11	SUBMITTED FOR PRELIMINARY REVIEW

THIS PLAN SHALL NOT BE MODIFIED WITHOUT WRITTEN PERMISSION FROM SEBAGO TECHNICS, INC. ANY ALTERATIONS AUTHORIZED OR OTHERWISE SHALL BE AT THE USER'S SOLE RISK AND WITHOUT LIABILITY TO SEBAGO TECHNICS, INC.

Sebago Technics
Engineering Excellence You Can Build On.
One Chocoma Street
Webster, ME 04095-1339
Tel (207) 552-5277
WWW.SEBAGOTECHNICS.COM

PROJECT NO. 11142
FIELD BOOK
DESIGN
CHKO
DRAWN
JRS
INSURD

DETAILS
OF
TRITON FOODMART / GAS STATION
1884 FOREST AVE.
PORTLAND, MAINE
FOR
JOHN CHAU
75 ACADIA ST.
PORTLAND, MAINE 04103

DATE	SCALE
8/3/11	AS NOTED