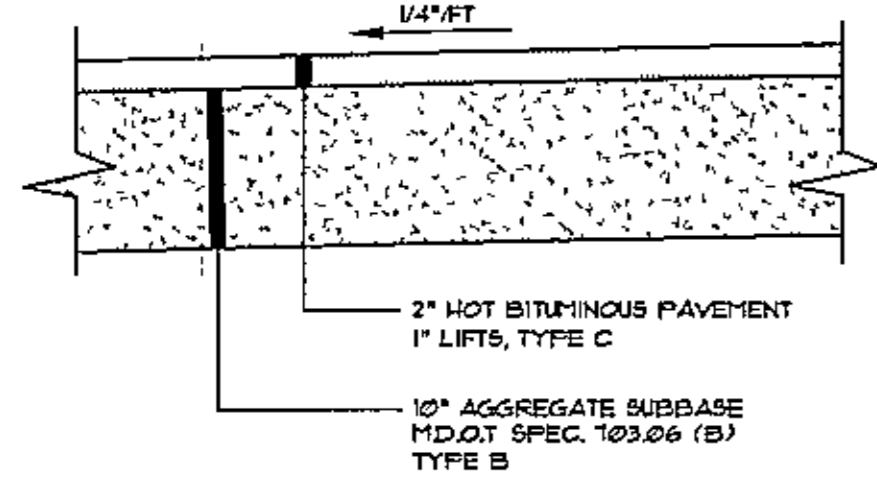
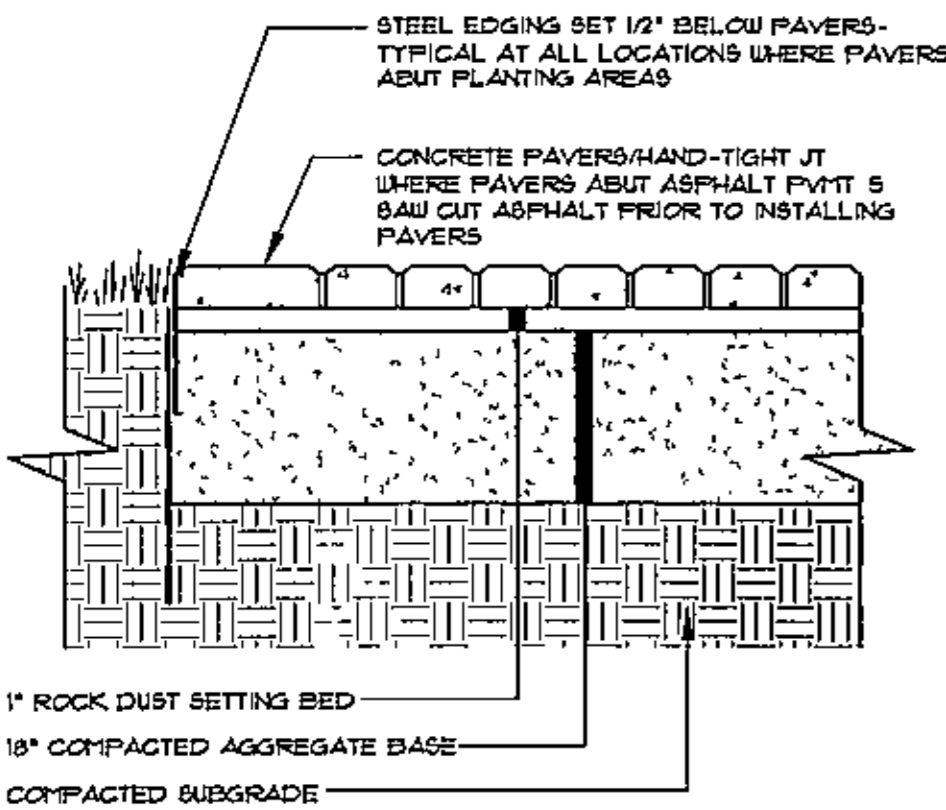


- NOTES:**
1. COMPACT GRAVEL SUBBASE BASE COURSE TO 92% OF MAXIMUM DENSITY USING HEAVY ROLLER COMPACTION.
  2. CONTRACTOR SHALL SET GRADE STAKES MARKING SUBBASE AND FINISH GRADE ELEVATIONS FOR CONSTRUCTION REFERENCE.

**TYP. PAVED PARKING LOT SECTION**  
NOT TO SCALE

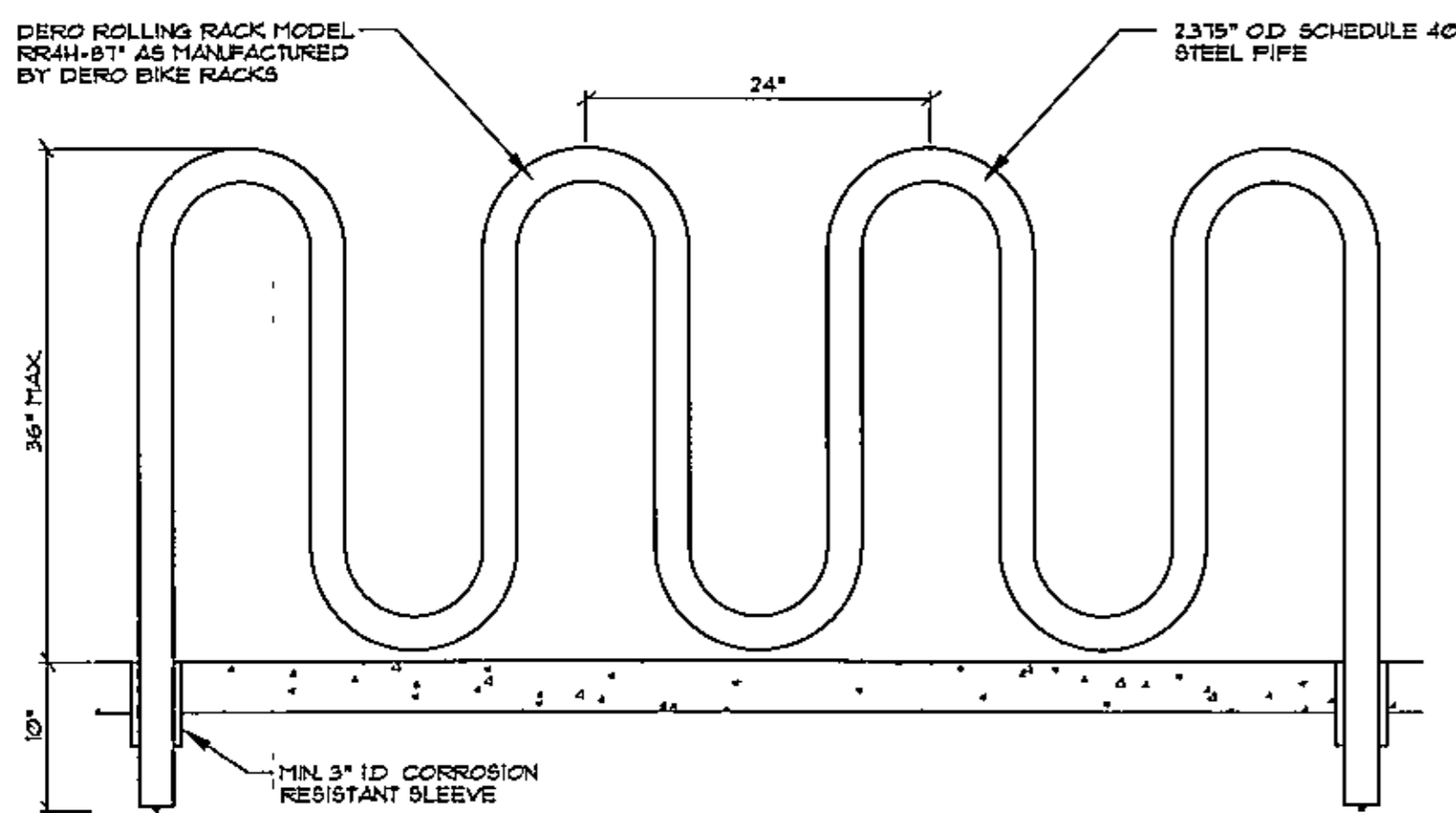


**BITUMINOUS SIDEWALK**  
NOT TO SCALE



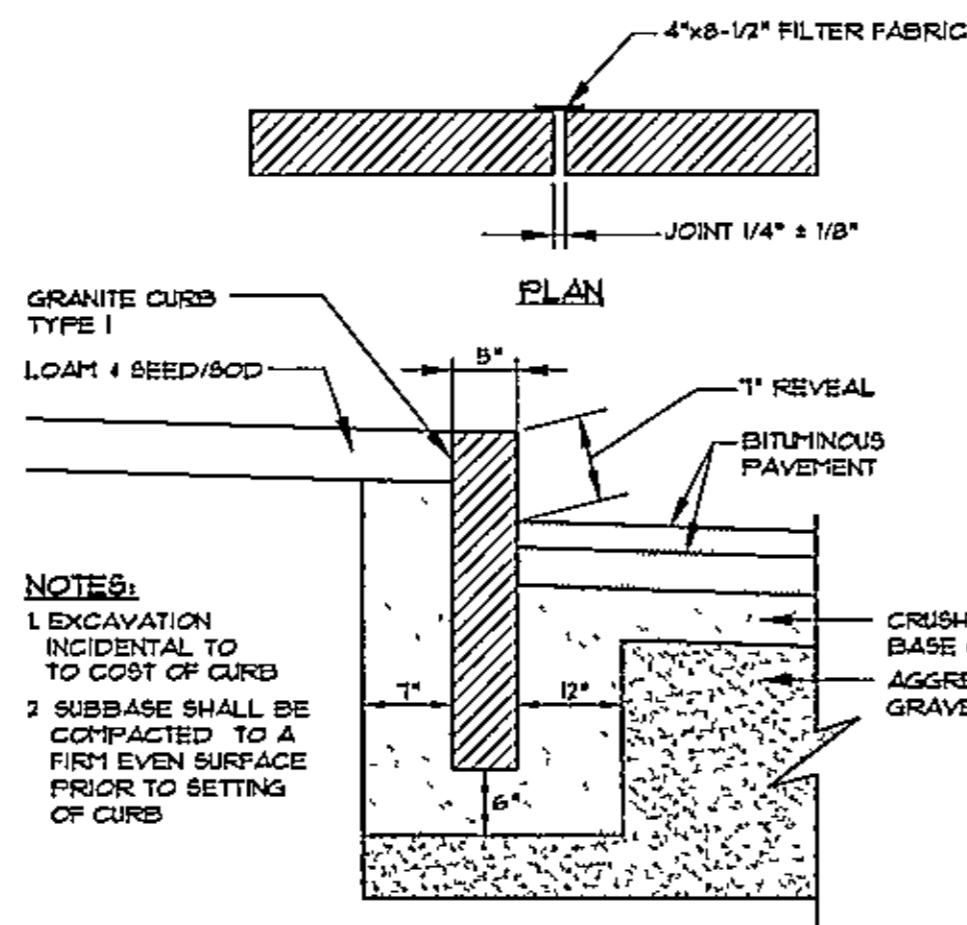
**NOTE:** SEE PLANS & SPEC. FOR PAVEMENT TYPE, COLOR, INSTALLATION PATTERN AND LOCATION

**SPECIALTY PAVEMENT**  
NOT TO SCALE



**NOTE:** INSTALL RACK PER MANUFACTURER'S INSTALLATION INSTRUCTIONS FOR NEW SIDEWALK

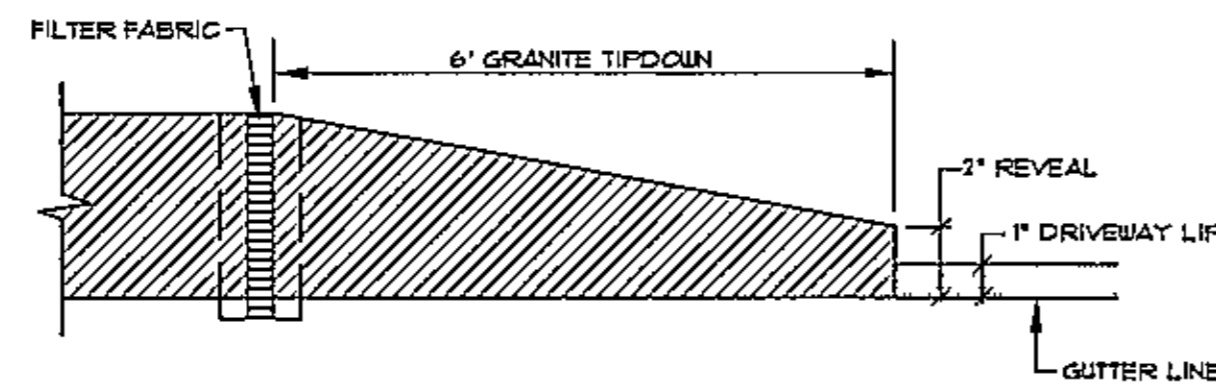
**BIKE RACK DETAIL**  
NOT TO SCALE



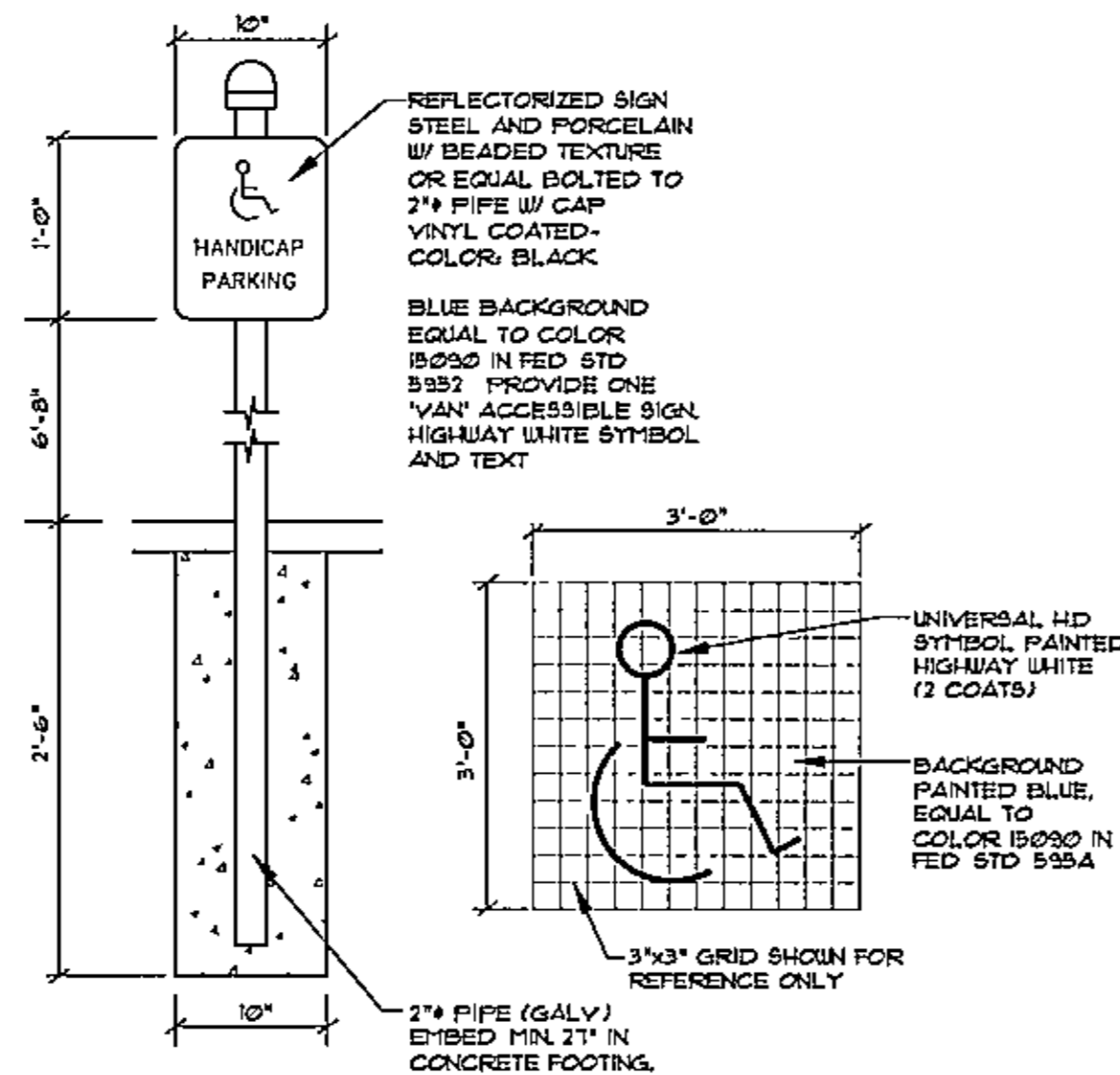
**NOTES:**

1. EXCAVATION INCIDENTAL TO COST OF CURB
2. SUBBASE SHALL BE COMPACTED TO A FIRM EVEN SURFACE PRIOR TO SETTING OF CURB

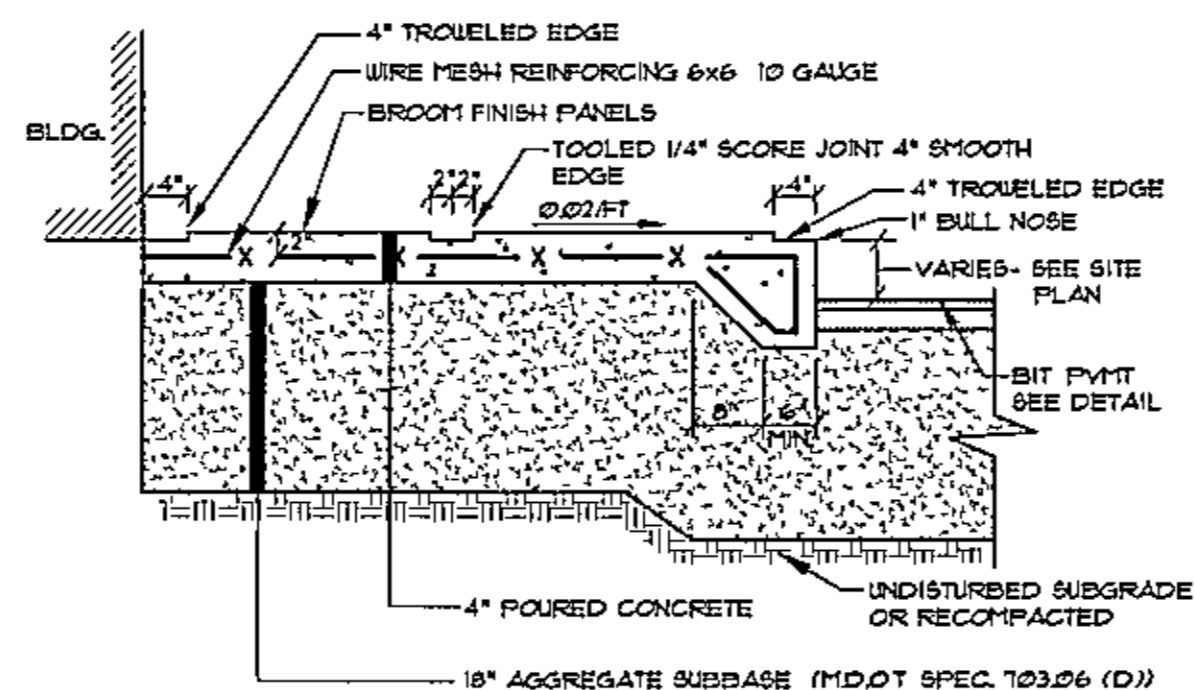
**VERTICAL GRANITE CURB**  
NOT TO SCALE



**TYPICAL TIPDOWN CURB INSTALLATION**  
NOT TO SCALE

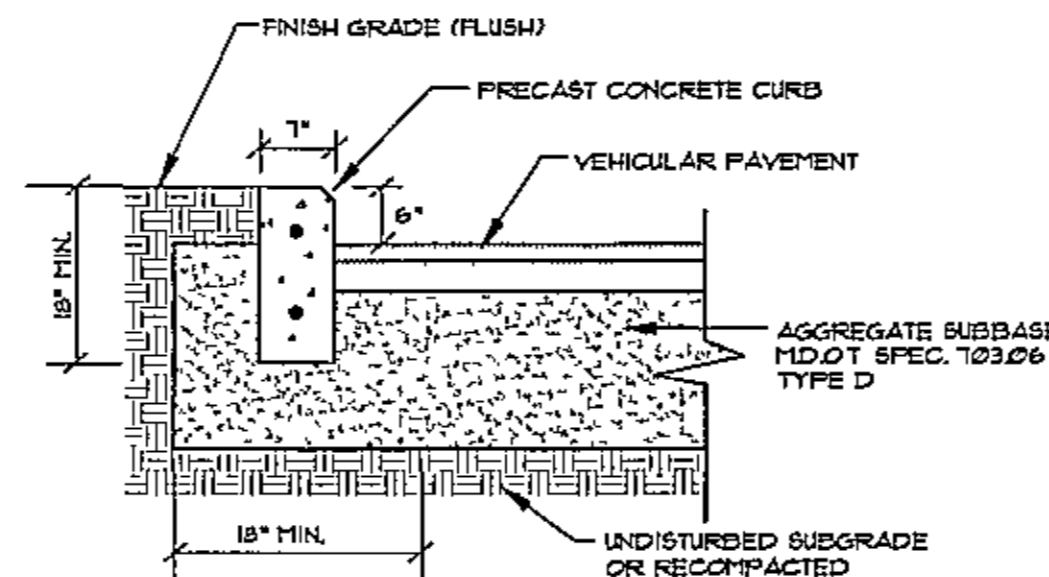


**HANDICAP SIGNS**  
NOT TO SCALE

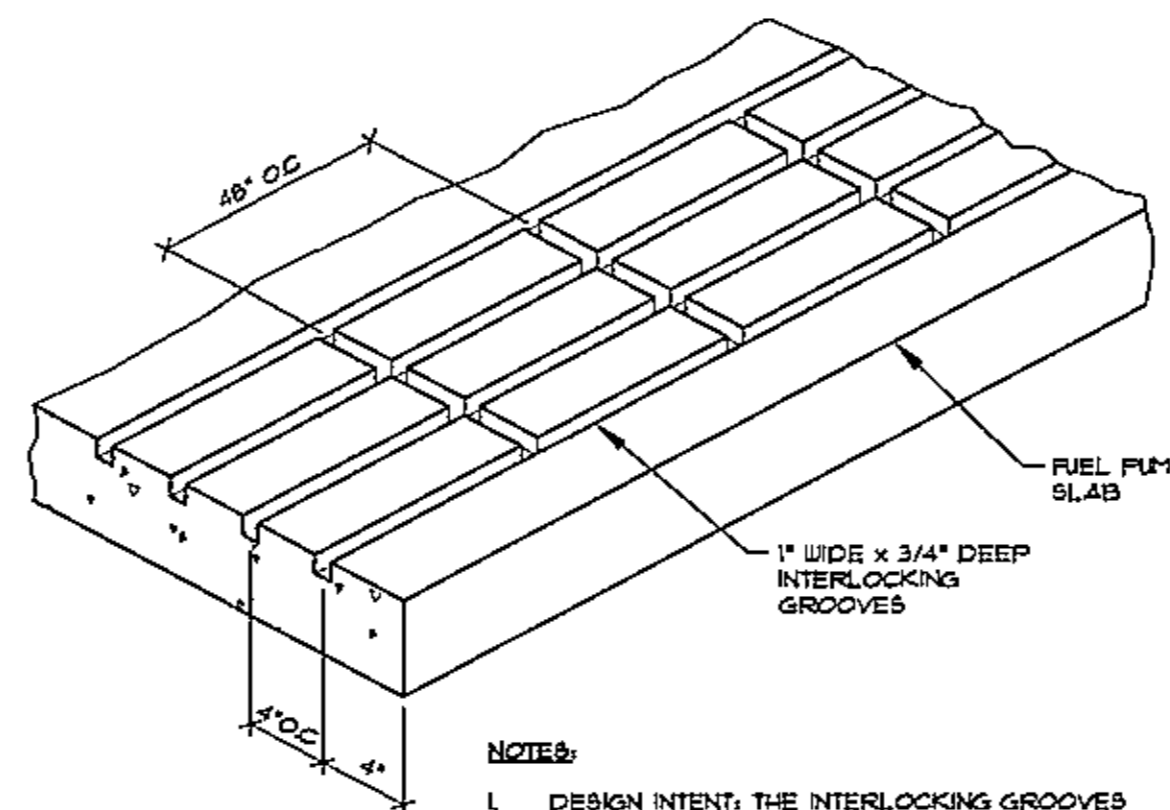


**NOTE:** INSTALL 5'-0\"/>

**CONCRETE SIDEWALK**  
NOT TO SCALE

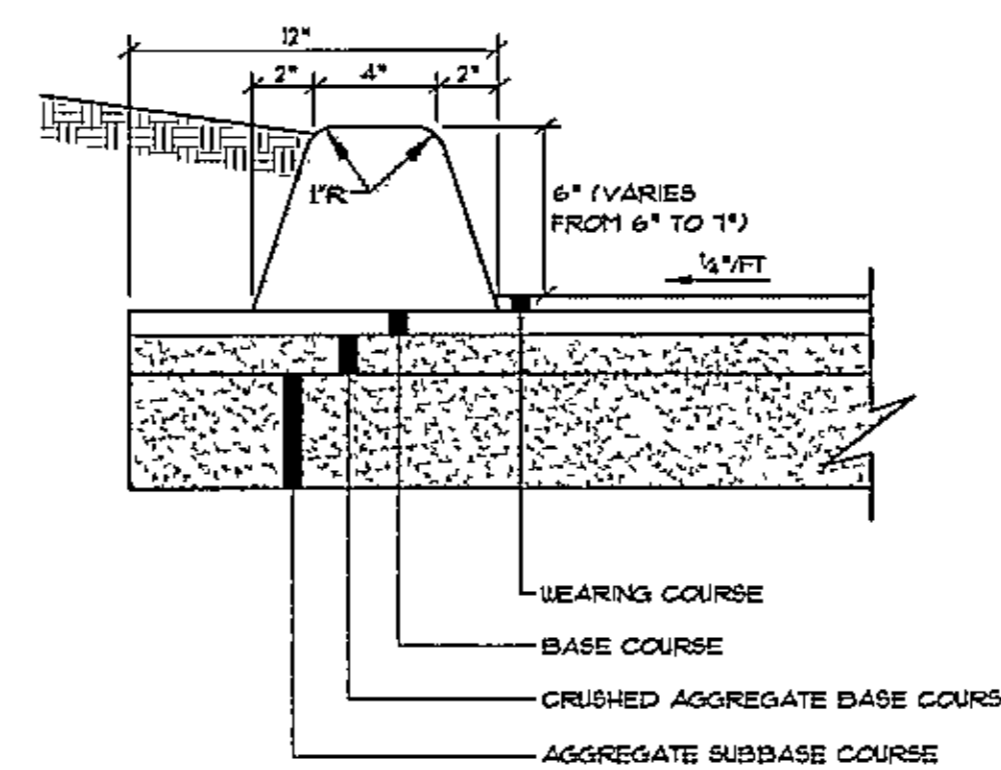


**PRECAST CONCRETE CURB**  
NOT TO SCALE



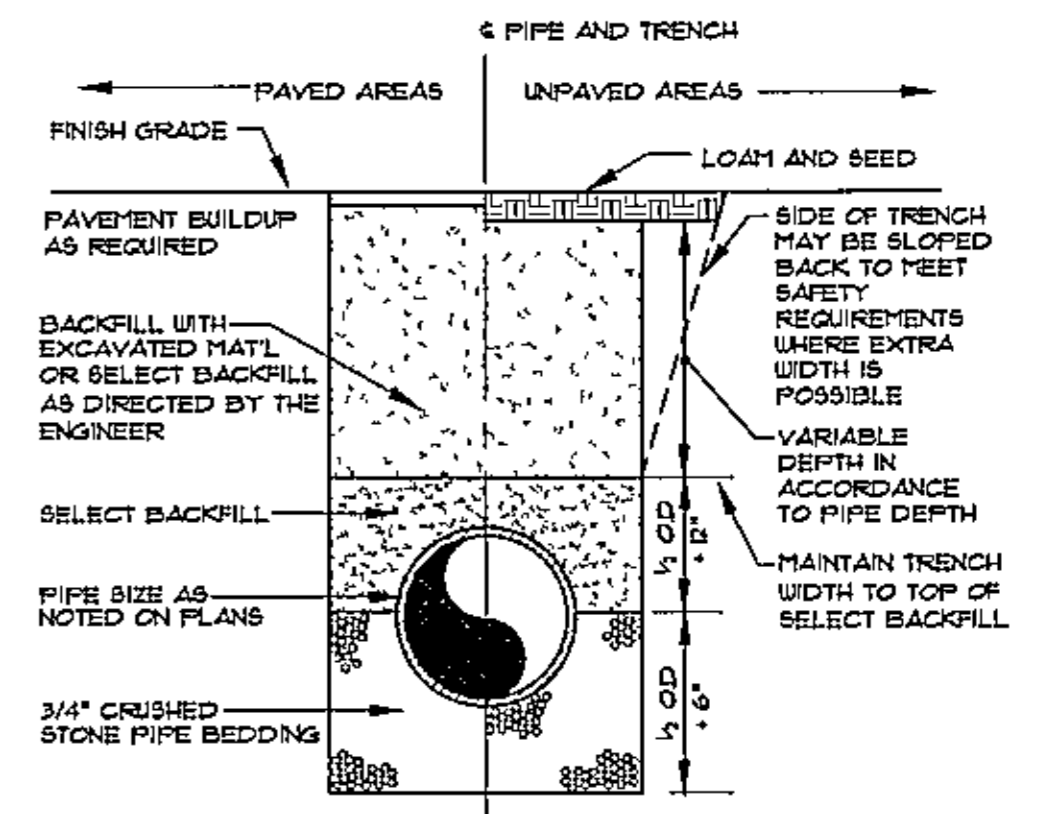
- NOTES:**
1. DESIGN INTENT: THE INTERLOCKING GROOVES ARE DESIGNED TO BE A FUEL PUMP SPILL CONTAINMENT DEVICE.
  2. CONTRACTOR MAY USE AN EQUIVALENT ALTERNATE DESIGN FOR FUEL PUMP SPILL CONTAINMENT AS APPROVED BY ENGINEER.

**POSITIVE LIMITING BARRIER**  
NOT TO SCALE



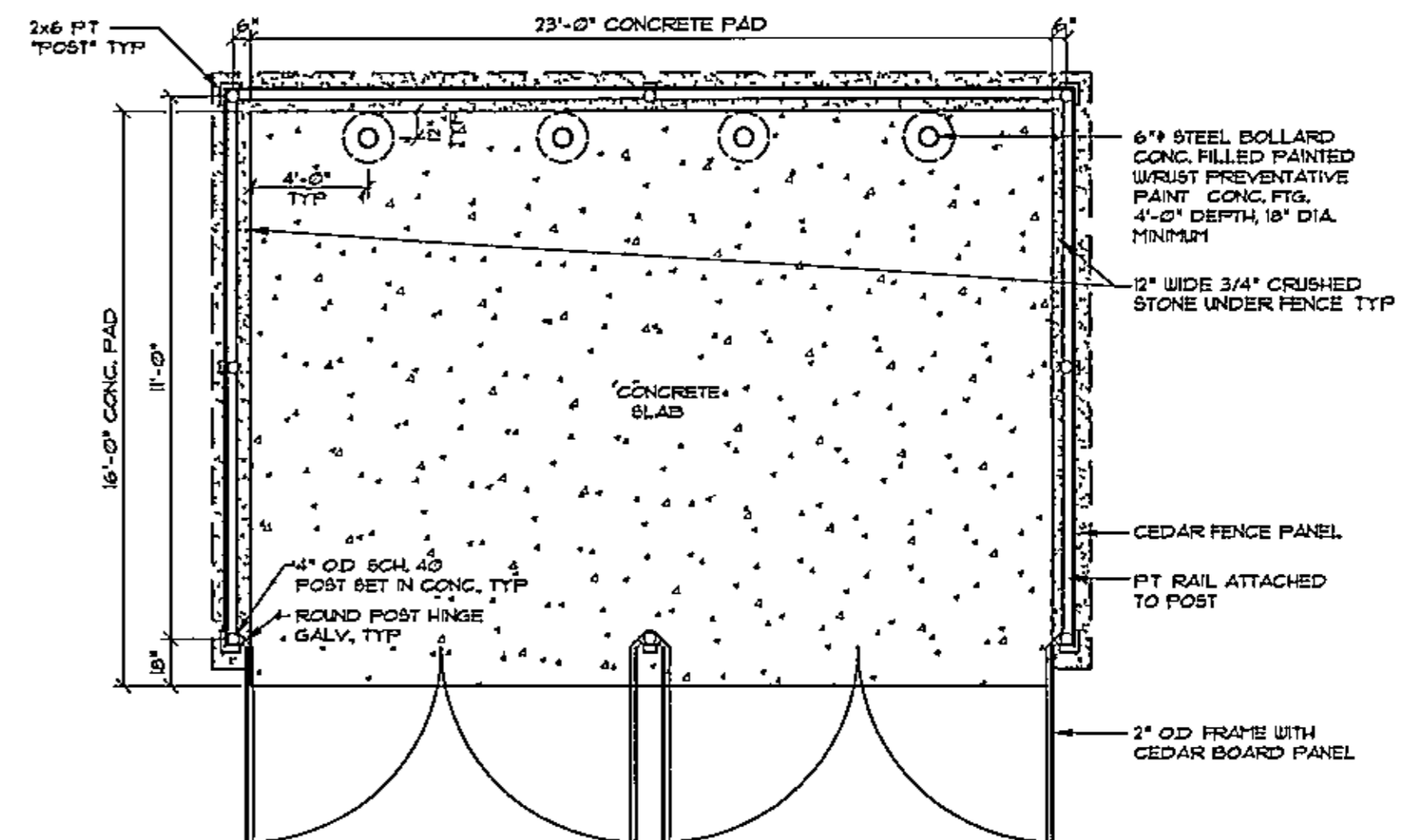
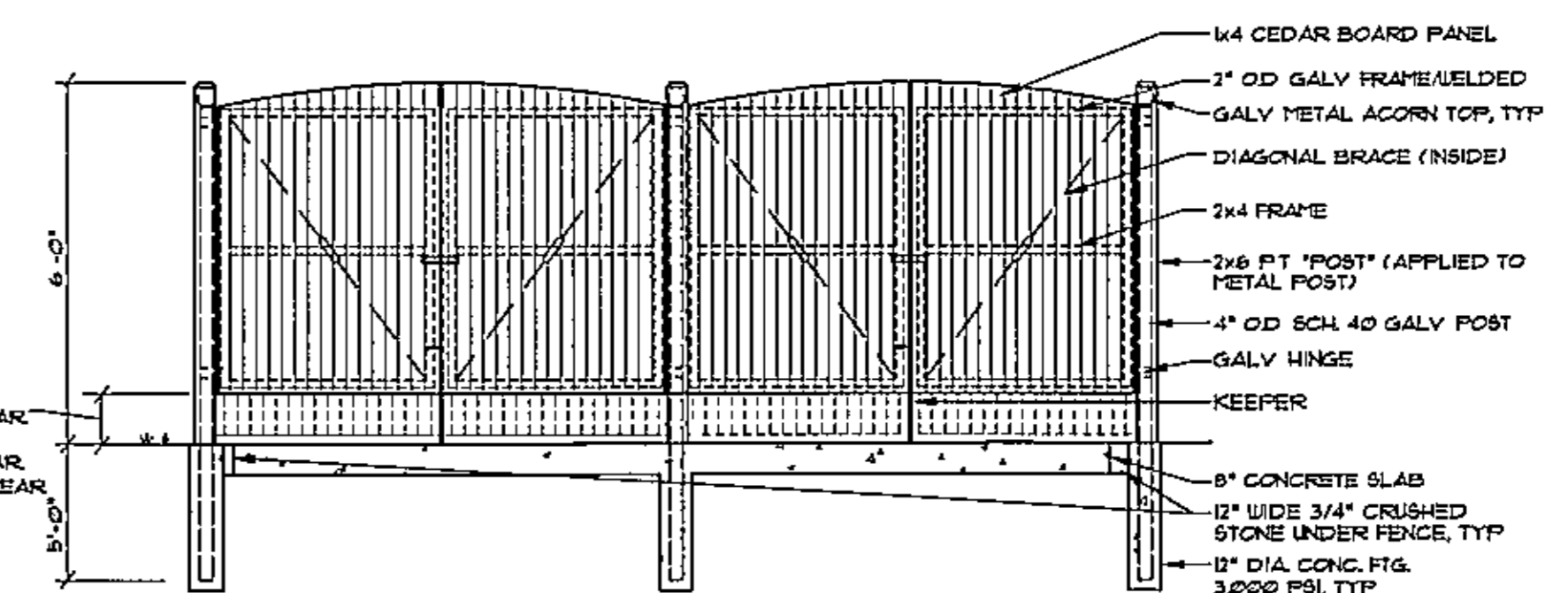
(SEE TYPICAL ROAD SECTION FOR MATERIAL SPECIFICATIONS AND DEPTHS)

**BITUMINOUS CURB SECTION**  
NOT TO SCALE

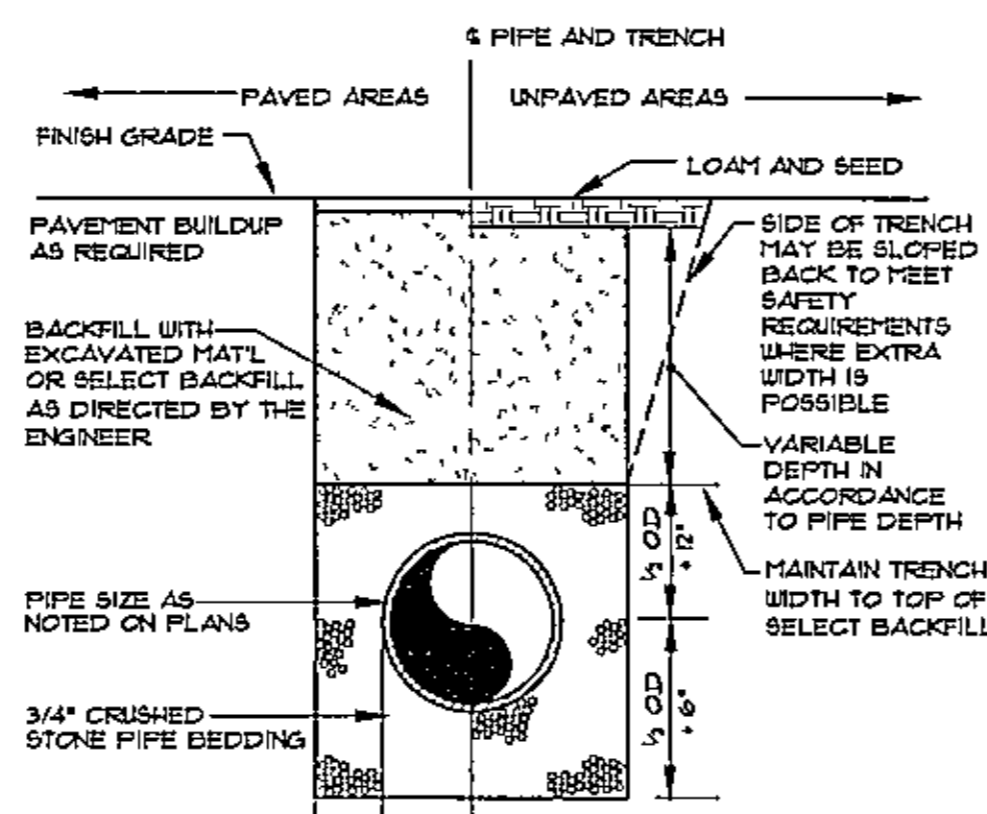


**NOTE:** ALL SEWER PIPE SHALL BE PVC SDR-35. ALL STORM DRAIN TO BE HDPE OR APPROVED EQUAL

**PRIVATE TYPICAL TRENCH SECTION**  
NOT TO SCALE

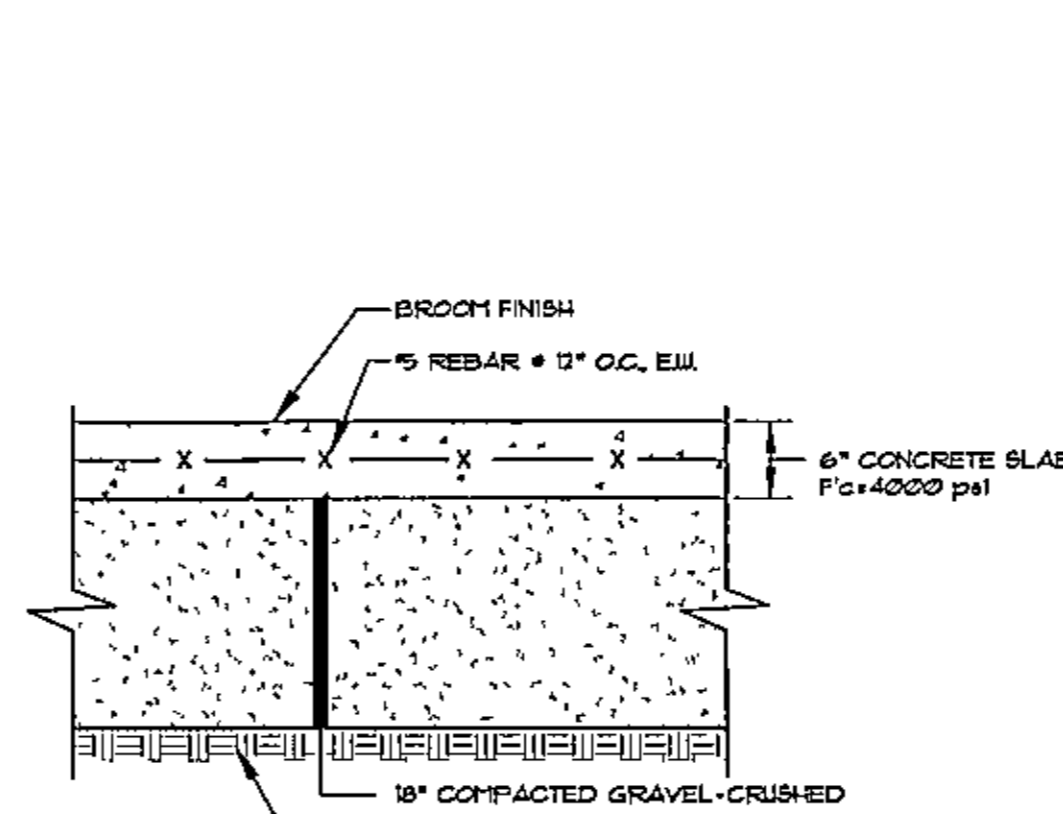


**TYPICAL DUMPSTER ENCLOSURE**  
NOT TO SCALE



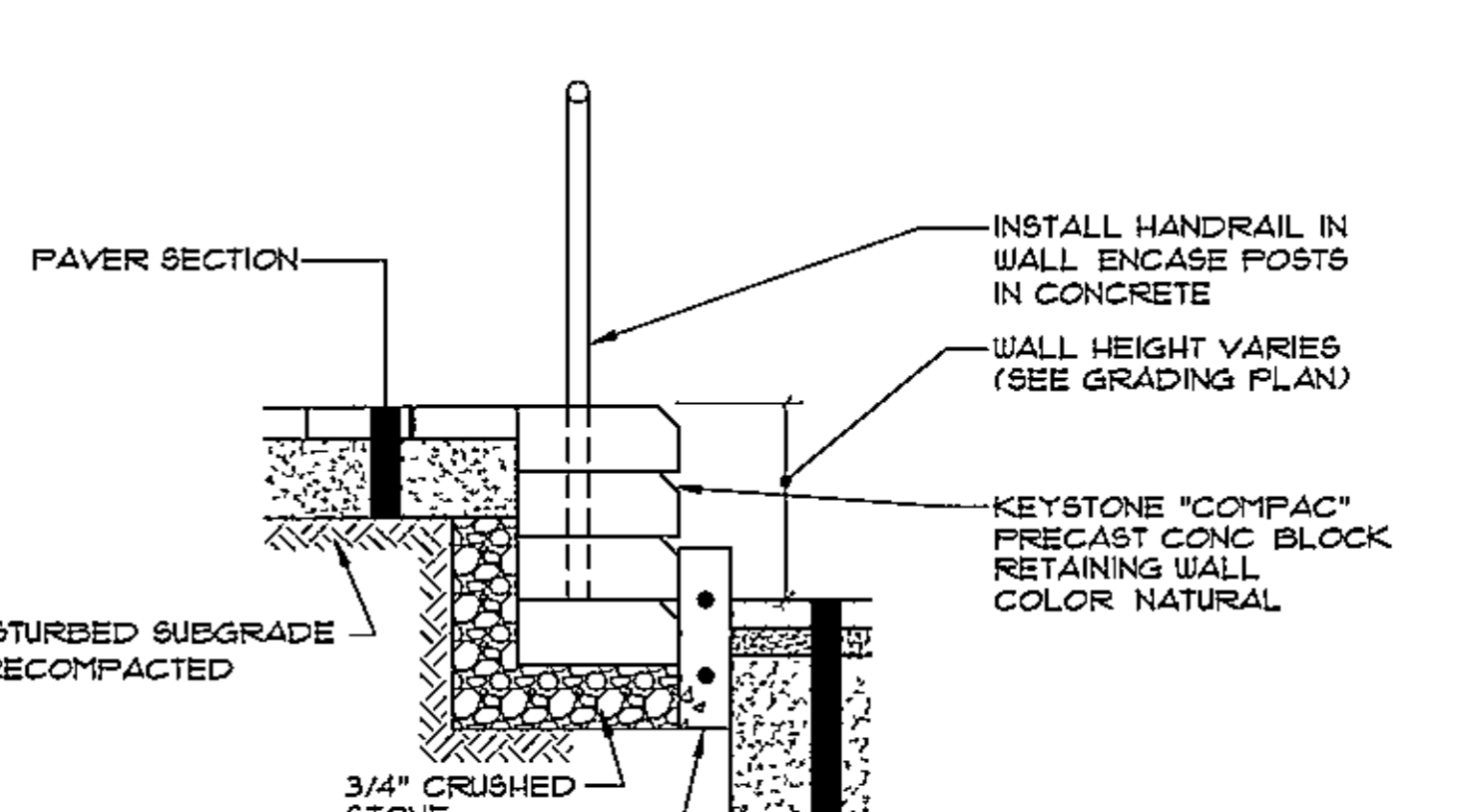
**NOTE:** ALL SEWER PIPE SHALL BE PVC SDR-35. ALL STORM DRAIN TO BE HDPE OR APPROVED EQUAL

**TYPICAL TRENCH SECTION**  
NOT TO SCALE

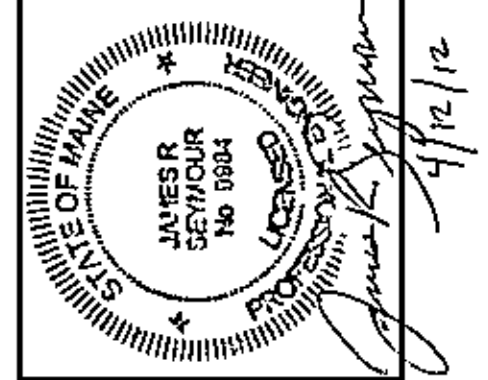


**NOTE:** PROVIDE CONTRACTION CONTROL JOINTS EVERY 6' IN EACH DIRECTION

**TYPICAL CONCRETE SLAB**  
NOT TO SCALE



**CONCRETE BLOCK RETAINING WALL**  
NOT TO SCALE



REV	DATE	BY	STATUS
E	04/12/12	JRS	REVISED SITE PLAN REMOVED COFFEE DRIVE-THRU
D	03/15/12	JRS	REVISED PER FINAL PLAN COMMENTS
C	03/08/12	JRS	SUBMITTED FOR FINAL PLAN REVIEW
B	01/10/12	JRS	SUBMITTED FOR PRELIMINARY REVIEW
A	11/15/11	JRS	SUBMITTED FOR PRELIMINARY REVIEW

**Sebago Technics**  
Engineering. Expertise. You Can Build On.  
One Church Street  
Westbrook, ME 04090-1038  
Tel: (207) 765-6277  
WWW.SEBAGOTECHNICS.COM

PROJECT NO: 11142  
FIELD BOOK: SAG  
DESIGN: CHKO  
DRAWN: JRS/URT  
CHECKED: SAG

**DETAILS OF TRITON FOODMART / GAS STATION**  
1884 FOREST AVE.  
PORTLAND, MAINE  
FOR: JOHN CHAU  
75 ACADIA ST.  
PORTLAND, MAINE 04103