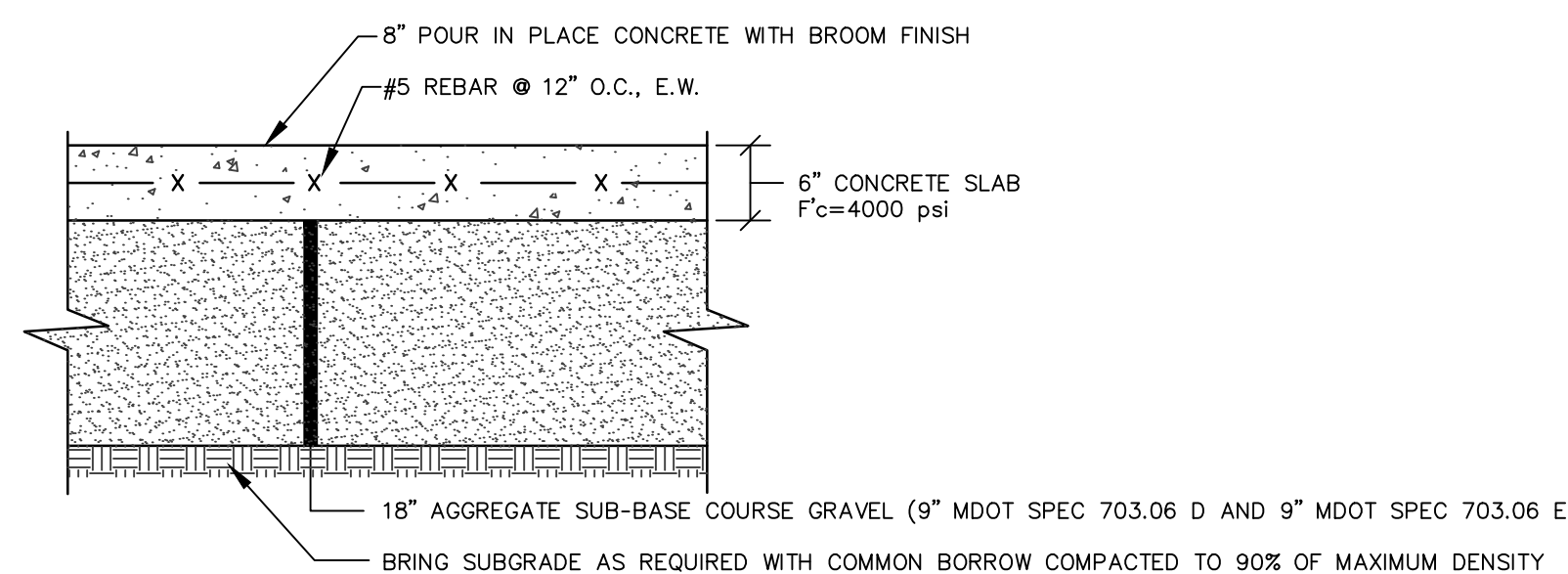


NOTE: PIPE CONNECTIONS SHALL BE WATERTIGHT FLEXIBLE BOOT CONNECTORS PROVIDES LEAKPROOF CONNECTION

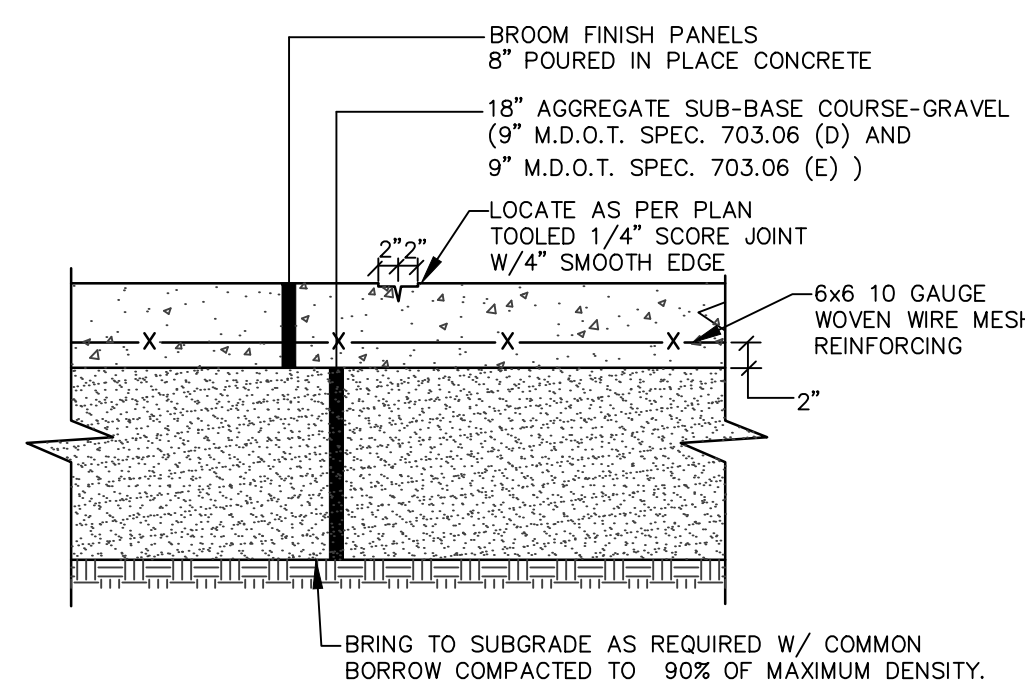
**PRECAST SEWER MANHOLE**  
NOT TO SCALE



NOTE:

1. PROVIDE CONTRACTION CONTROL JOINTS EVERY 6' IN EACH DIRECTION

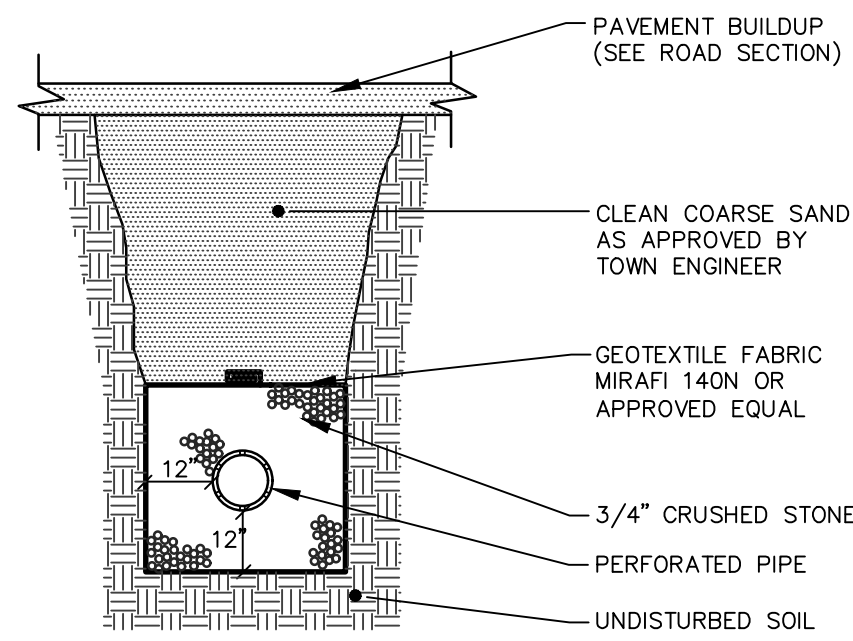
**TYPICAL CONCRETE SLAB**  
NOT TO SCALE



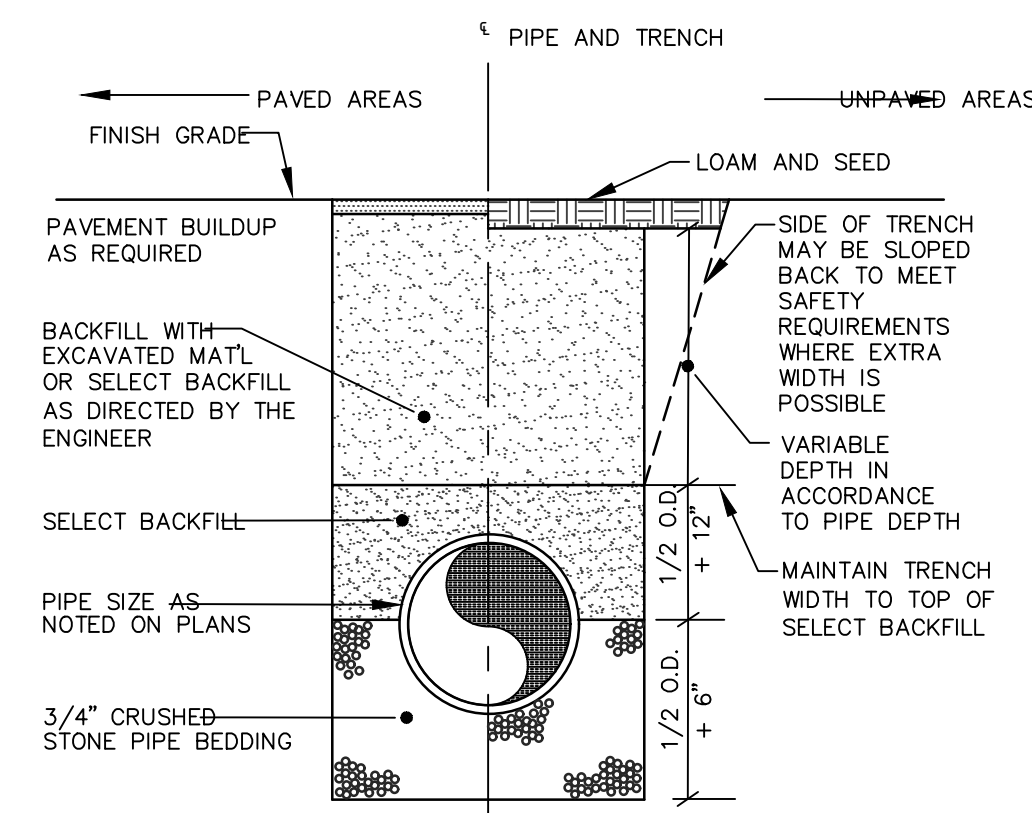
NOTES:

1. COMPACT GRAVEL SUB-BASE, BASE COURSE TO 92% OF MAXIMUM DENSITY USING HEAVY ROLLER COMPACTION.
2. CONTRACTOR SHALL SET GRADE STAKES MARKING SUBBASE AND FINISH GRADE ELEVATIONS FOR CONSTRUCTION REFERENCE.

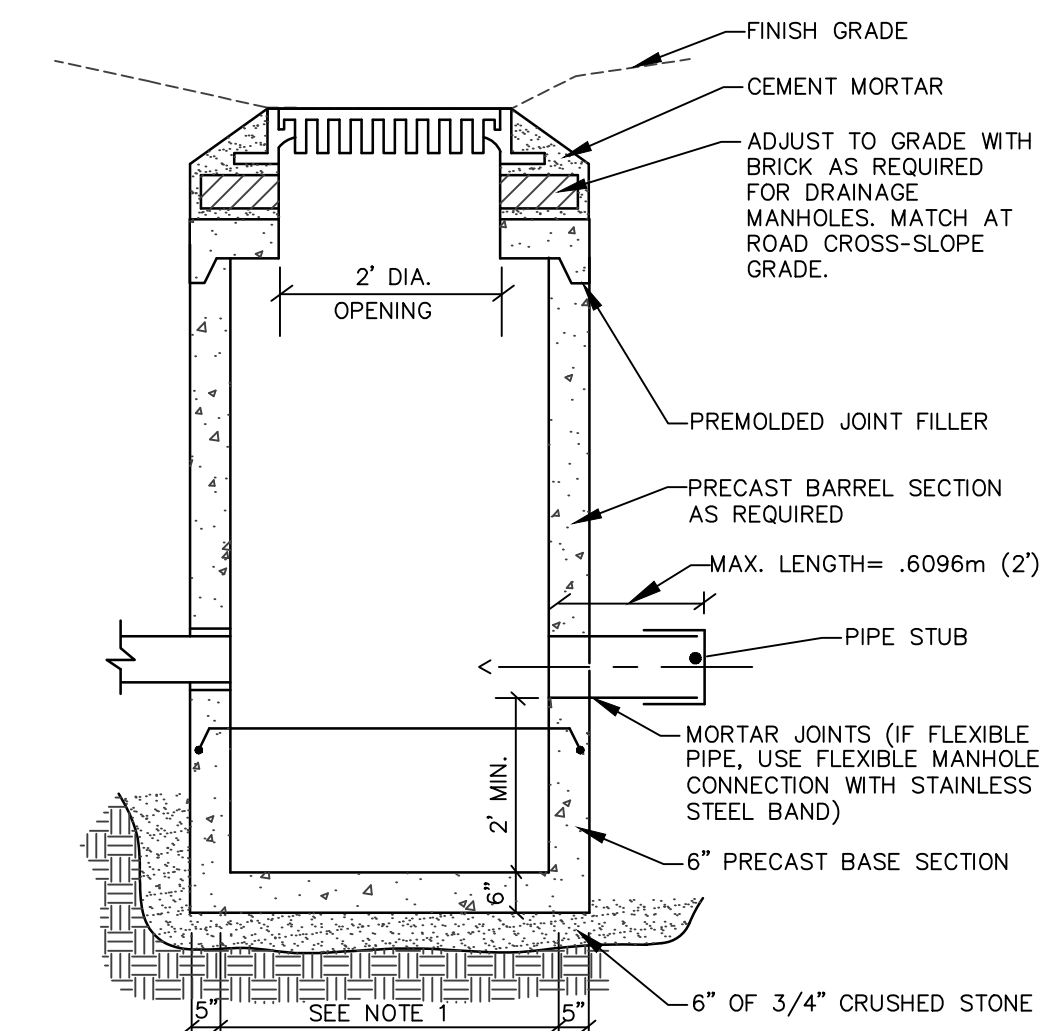
**HEAVY DUTY CONCRETE PAVEMENT**  
NOT TO SCALE



**TYP. PERFORATED UNDERDRAIN TRENCH SECTION**  
NOT TO SCALE



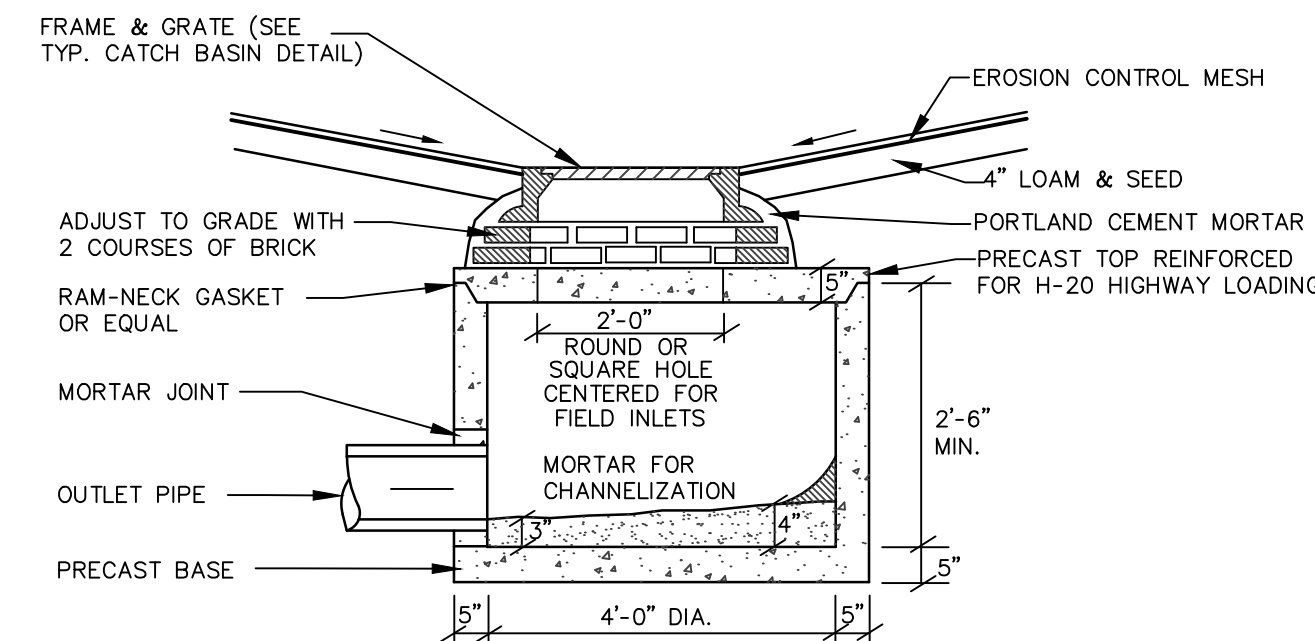
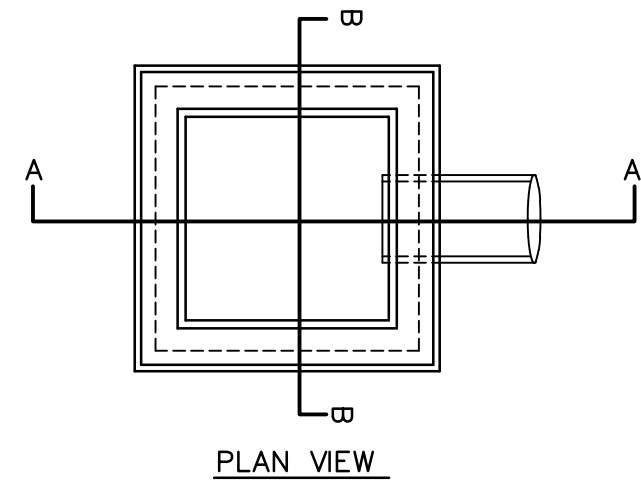
**TYPICAL TRENCH SECTION**  
NOT TO SCALE



NOTES:

1. 4'-0" I.D. TYPICAL. SOME STRUCTURES MAY REQUIRE LARGER I.D. PROVIDE SHOP DRAWINGS.
2. DRAINAGE STRUCTURES TO BE DESIGNED FOR H-20 LOADING.
3. PIPE SIZES AND INVERTS AS NOTED ON PLANS.
4. CATCH BASIN FRAME AND GRATE TO BE ETHERIDGE FOUNDRY E245G AND/OR DRSA (WITH GRANITE STONE) APPROVED EQUAL. LOW PROFILE FRAMES AND COVERS MAY BE USED AS A SUBSTITUTE.
5. DRAINAGE MANHOLE FRAME AND COVER TO BE ETHERIDGE FOUNDRY E245S OR APPROVED EQUAL.

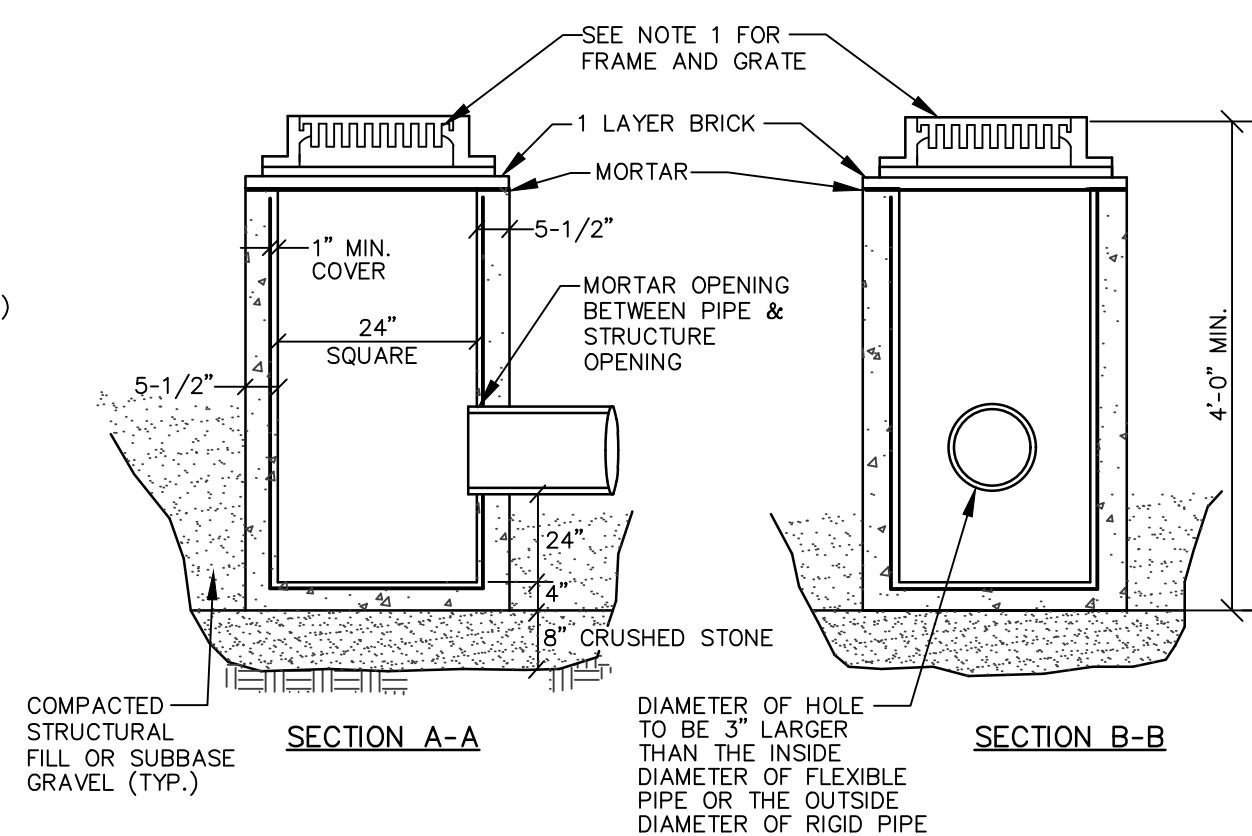
**TYP. DRAINAGE STRUCTURE & CATCH BASIN**  
NOT TO SCALE



NOTES:

1. SUBMIT SHOP DRAWINGS FOR OWNERS APPROVAL.
2. SEE PLAN AND PROFILE FOR INVERT AND RIM ELEVATIONS.

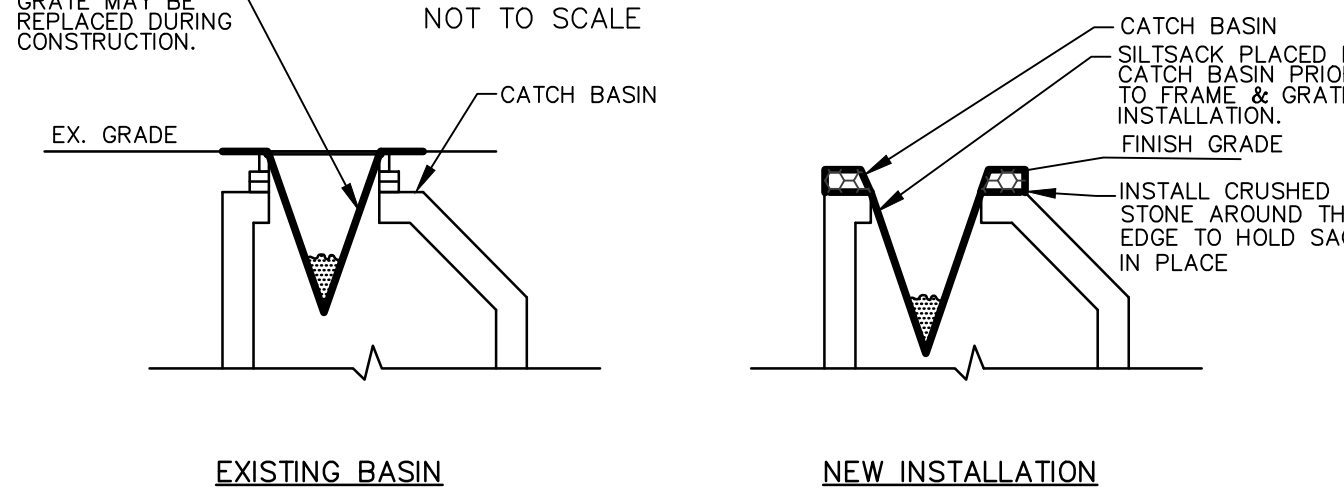
**FIELD INLET CATCH BASIN**  
NOT TO SCALE



NOTES:

1. FRAME SHALL BE FOR 24" SQUARE GRATE, EAST JORDAN FOUNDRY 5250, OR APPROVED EQUAL.
2. ENTIRE CATCH BASIN WITH EXCEPTION OF LEVELING BRICK FRAME AND GRATE TO BE PRECAST AS SINGLE PORTLAND CEMENT CONCRETE UNIT.

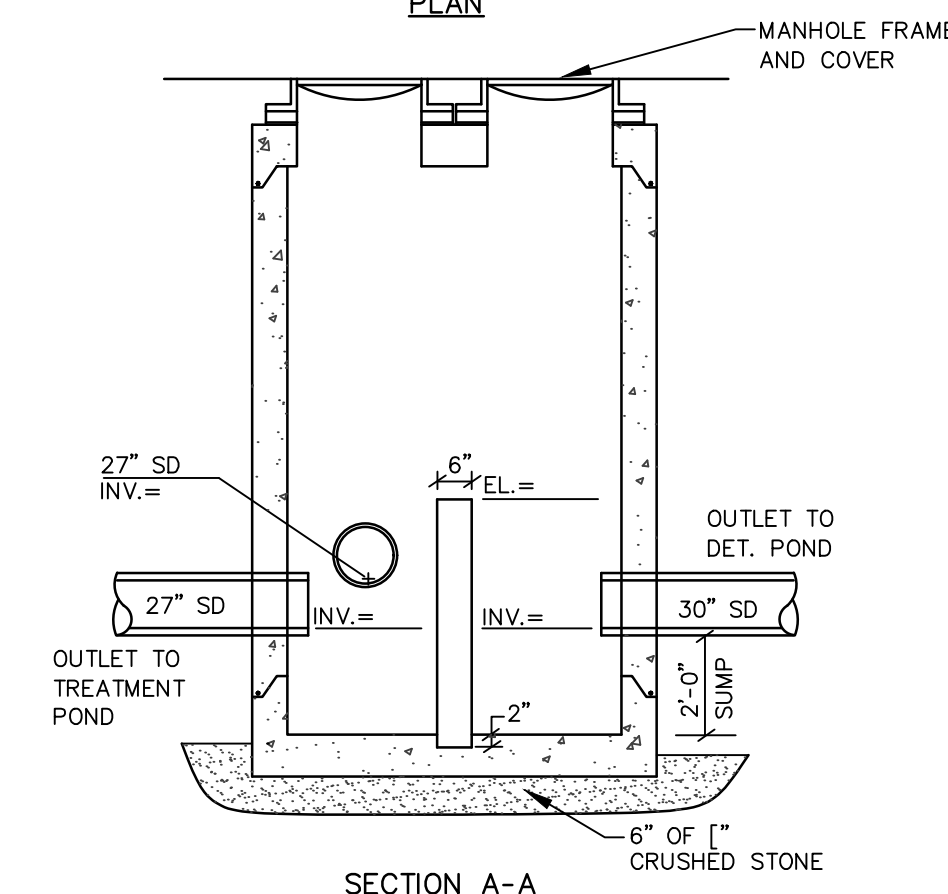
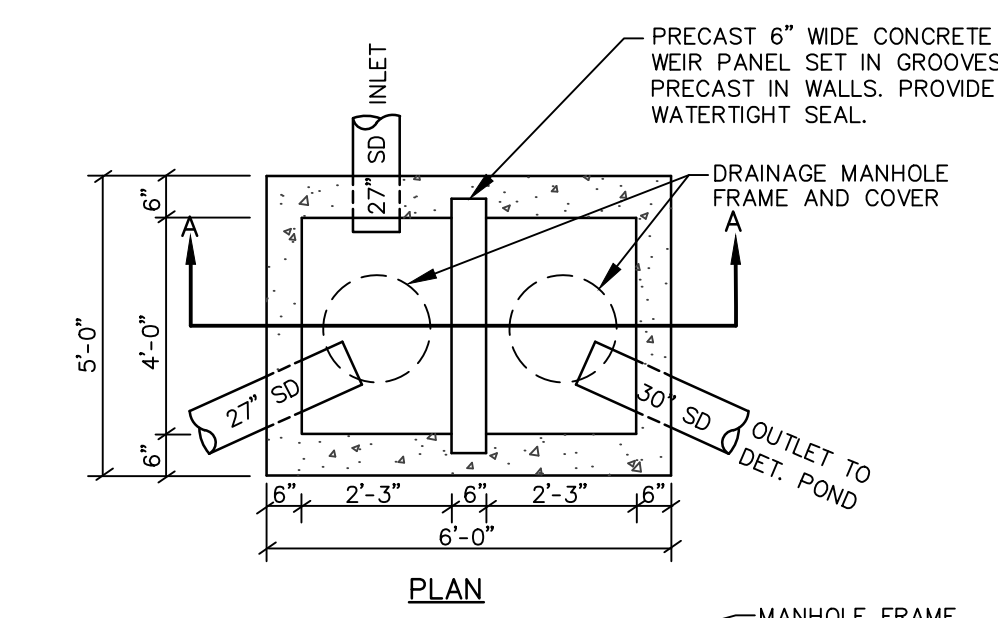
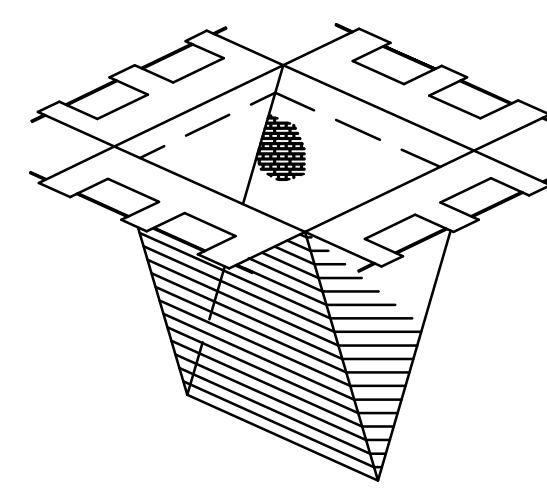
**"TYPE F" CATCH BASIN**  
NOT TO SCALE



NOTES:

- PRIOR TO FINAL GRADING AND PAVING OPERATIONS BEGIN A CATCH BASIN INSERT (SUCH AS A SILT SACK OR A DANDY BAG II) MUST BE INSTALLED IN EACH BASIN PER MANUFACTURERS INSTRUCTIONS. HAY BALES SHOULD BE REMOVED ONCE INSERTS ARE INSTALLED.

**CATCH BASIN PROTECTION DETAIL (FOR PAVED AREAS)**  
NOT TO SCALE



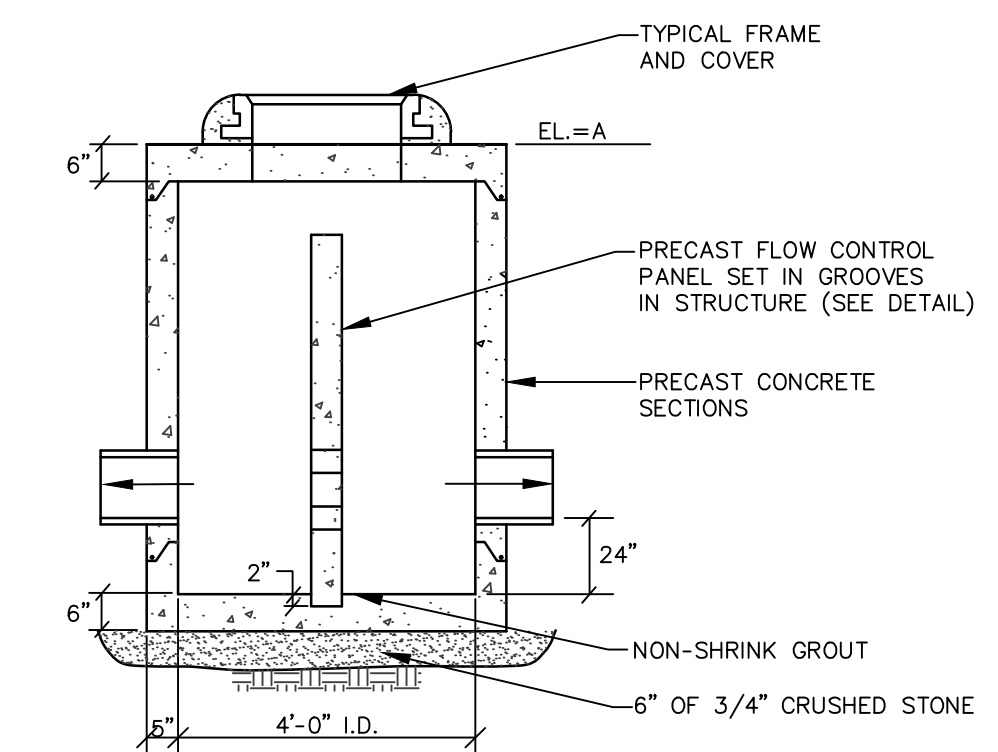
NOTE:

- SUBMIT SHOP DRAWINGS AND STRUCTURE SPECIFICATIONS FOR OWNER/ENGINEER APPROVAL.

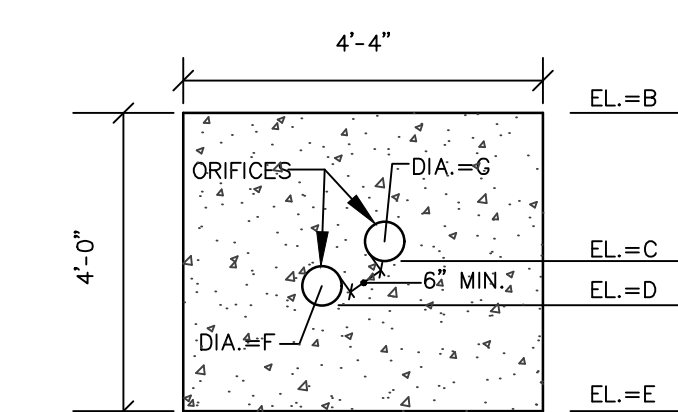
**INLET CONTROL STRUCTURE**  
NOT TO SCALE

**OCS CAP ORIFICE SIZE**

OUTLET CONTROL STRUCTURE	ORIFICE DIAMETER (IN)
OCS 1	0.8
OCS 2	0.8
OCS 3	0.7



**OUTLET STRUCTURE DETAIL**  
NOT TO SCALE



**CONTROL STRUCTURE SCHEDULE**  
NOT TO SCALE

DETENTION BASIN	ELEVATION (FT.)						ORIFICE ~ (IN)
	A	B	C	D	E	F	
I							
II							

JAMES R. SEYMOUR, PE 9894

STATE OF MAINE PROFESSIONAL ENGINEER

DESIGNED: SAH

CHECKED: RLM

DATE: 9/10/18

STATUS: SUBMIT TO CITY OF PORTLAND

REVIEW: [signature]

PREPARED BY: [signature]

AUTHORIZED FOR: [signature]

**SEBAGO** TECHNICS

WWW.SEBAGOTECHNICS.COM

75 John Roberts Rd.  
Suite 4A  
South Portland, ME 04106  
Tel: 207-209-2100

**DETAILS**

OF: PINE STATE FAMILY MART

1884 FOREST AVENUE  
PORTLAND, MAINE 04103

FOR: JOHN CHAU

75 ARCADIA ST.  
PORTLAND, MAINE 04103

PROJECT NO. 11142

SCALE: NTS

SHEET 8 OF 9

11142B.dwg, TAB:03