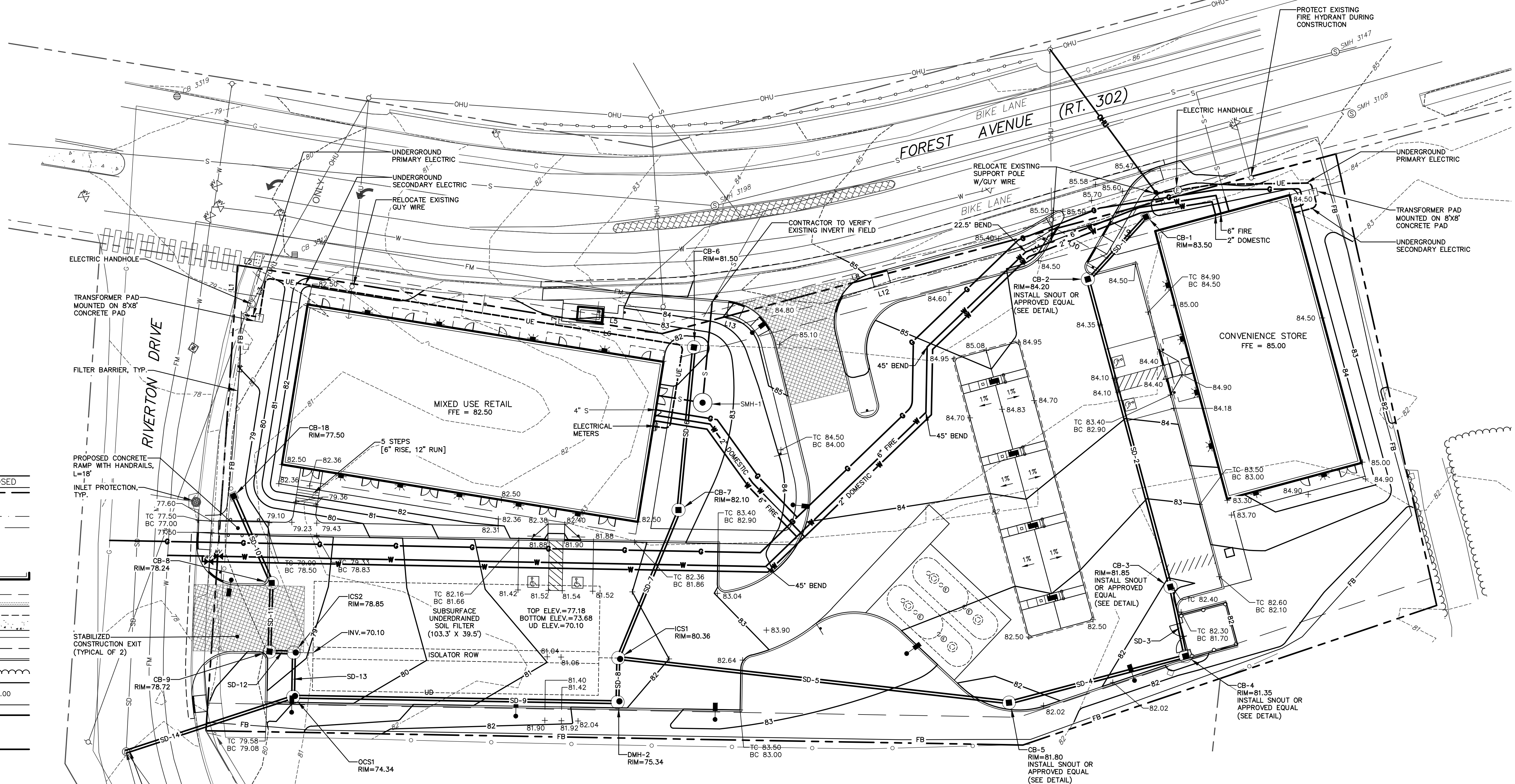
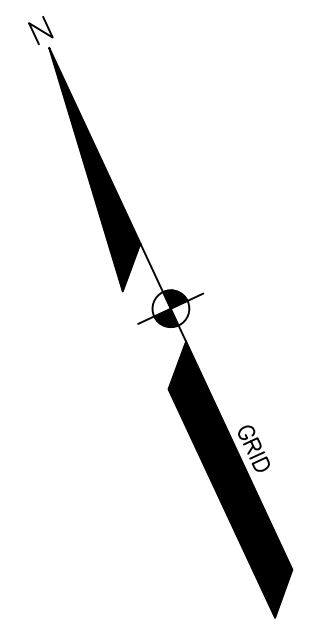


**GRADING & EROSION NOTES**

1. SIDESLOPES SHALL NOT BE STEEPER THAN 3:1 (H:V) EXCEPT AS OTHERWISE IDENTIFIED ON THIS PLAN. ALL SIDESLOPES STEEPER THAN 3:1 (H:V) SHALL BE LINED WITH EROSION CONTROL BLANKET, OR ADDITIONAL MEASURES AS INDICATED.
2. ALL SEDIMENT AND EROSION CONTROL MEASURES SHALL BE INSTALLED IN ACCORDANCE WITH "MAINE EROSION AND SEDIMENT CONTROL BMP'S" MANUAL PUBLISHED BY BUREAU OF LAND AND WATER QUALITY MAINE DEPARTMENT OF ENVIRONMENTAL PROTECTION, MARCH 2003 OR LATEST EDITION. IT SHALL BE THE RESPONSIBILITY OF THE CONTRACTOR TO POSSESS A COPY OF THE EROSION CONTROL PLAN AT ALL TIMES.
3. ALL AREAS DISTURBED DURING CONSTRUCTION AND NOT RESTORED WITH IMPERVIOUS SURFACES (BUILDINGS, PAVEMENT, WALKS, ETC.) SHALL RECEIVE LOAM AND SEED PER DETAIL.



**LEGEND**

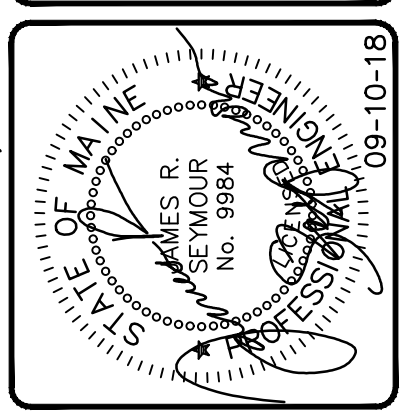
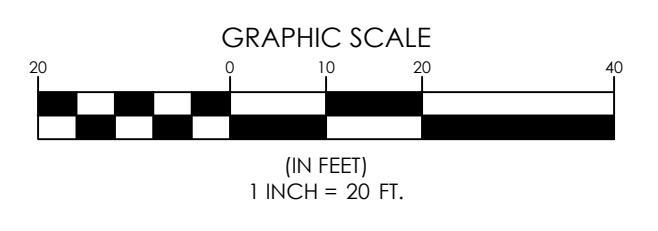
	EXISTING		PROPOSED
	PROPERTY LINE/R.O.W.		ABUTTER LINE/R.O.W.
	EASEMENT		CENTERLINE
	BENCHMARK		BUILDING
	DECK/STEPS/OVERHANG		EDGE PAVEMENT
	PAVEMENT SAWCUT		EDGE CONCRETE
	PAVEMENT PAINT		EDGE GRAVEL
	CURB LINE		TREELINE
	CONTOURS		SPOT GRADE
	CHAIN LINK FENCE		GAS
	GAS GATE VALVE		GAS MANHOLE
	WATER GATE VALVE		WATER SHUT OFF
	HYDRANT		WATER MANHOLE
	WELL		SANITARY SEWER
	FORCE MAIN		SANITARY MANHOLE
	STORM DRAIN		UNDER DRAIN
	DRAINAGE MANHOLE		CATCH BASIN
	OVERHEAD UTILITY		UNDERGROUND UTILITY
	TRANSFORMER PAD		ELECTRICAL MANHOLE
	ELECTRIC METER		TELEPHONE MANHOLE
	LIGHT POLE		UTILITY POLE
	GUY WIRE		EROSION CONTROL BLANKET
	FILTER BARRIER		RIPRAP
	CHECK DAM		INLET PROTECTION

**STORM DRAIN PIPE DATA**

NAME	SIZE	LENGTH	SLOPE
SD-1	12"	28'	0.53%
SD-2	12"	111'	0.49%
SD-3	12"	22'	0.46%
SD-4	12"	62'	0.57%
SD-5	12"	138'	0.51%
SD-6	12"	55'	0.64%
SD-7	12"	54'	0.82%
SD-8	12"	12'	0.63%
SD-9	12"	113'	0.78%
SD-10	12"	31'	0.61%
SD-11	12"	21'	0.58%
SD-12	12"	5'	0.91%
SD-13	12"	12'	0.83%
SD-14	12"	61'	0.98%

**STORM DRAIN STRUCTURE DATA**

STRUCTURE	RIM	INV. IN	INV. OUT	DIAM.
CB-1	83.50	79.45 (SD-1)	79.45 (SD-1)	48"
CB-2	84.20	79.30 (SD-1)	79.20 (SD-2)	48"
CB-3	81.85	78.65 (SD-2)	78.55 (SD-3)	48"
CB-4	81.35	78.45 (SD-3)	78.35 (SD-4)	48"
CB-5	81.80	78.00 (SD-4)	77.90 (SD-5)	48"
CB-6	81.50		78.10 (SD-6)	48"
CB-7	82.10	77.75 (SD-6)	77.65 (SD-7)	48"
CB-8	78.24	73.34 (SD-10)	73.24 (SD-11)	48"
CB-9	78.72	73.12 (SD-11)	73.02 (SD-12)	48"
CB-18	77.50		73.55 (SD-10)	48"
DMH-2	75.34	71.50 (SD-8)	71.40 (SD-9)	48"
ICS1	80.36	77.18 (SD-5)	71.60 (SD-8)	48"
ICS2	78.85	72.98 (SD-12)	70.00 (SD-13)	48"
OCS1	74.34	70.50 (SD-9)	69.80 (SD-14)	48"



DESIGNED	CHECKED
SAH	RLM
DATE: 9-10-18	
SUBMIT TO: CITY OF PORTLAND	
REVIEW BY: [blank]	
STATUS: [blank]	
REVISIONS: [blank]	
NOTES: [blank]	

**SEBAGO TECHNICS**  
 WWW.SEBAGOTECHNICS.COM  
 75 John Roberts Rd.  
 Suite 4A  
 South Portland, ME 04106  
 Tel. 207-209-2100

**GRADING & UTILITY PLAN**  
 OF: PINE STATE FAMILY MART  
 1884 FOREST AVENUE  
 PORTLAND, MAINE 04103  
 FOR: JOHN CHAU  
 75 ARCADIA ST.  
 PORTLAND, MAINE 04103

PROJECT NO.	SCALE
11142	1" = 20'