

# LOT 5 INDUSTRIAL WAY

81 INDUSTRIAL WAY  
PORTLAND, ME 04103

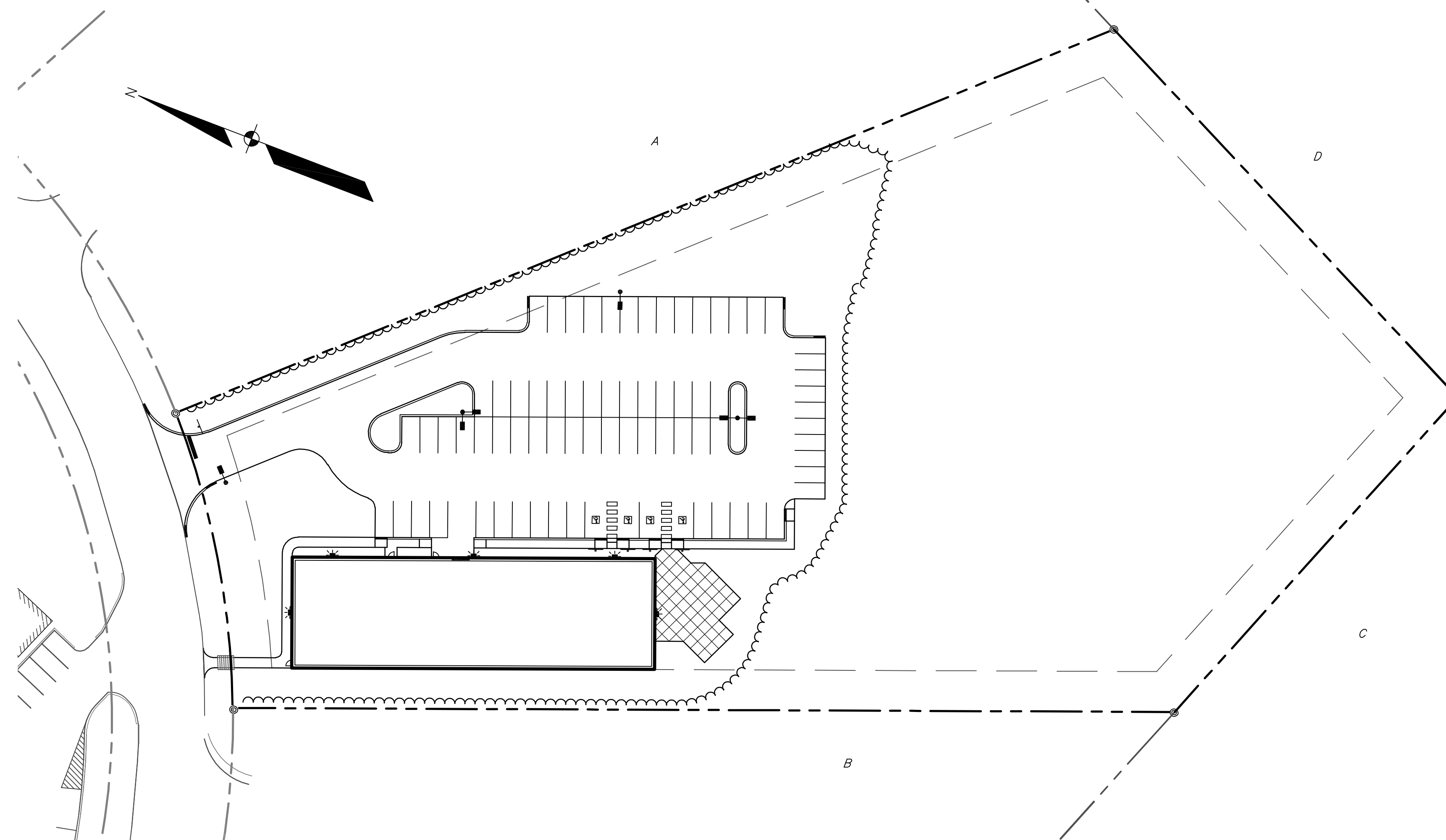
APPLICANT:  
DEERFIELD 91  
INDUSTRIAL, LLC.  
1 CANAL PLAZA  
PORTLAND, ME 04101

ENGINEER/SURVEYOR:

**SEBAGO**  
TECHNICS

WWW.SEBAGOTECHNICS.COM

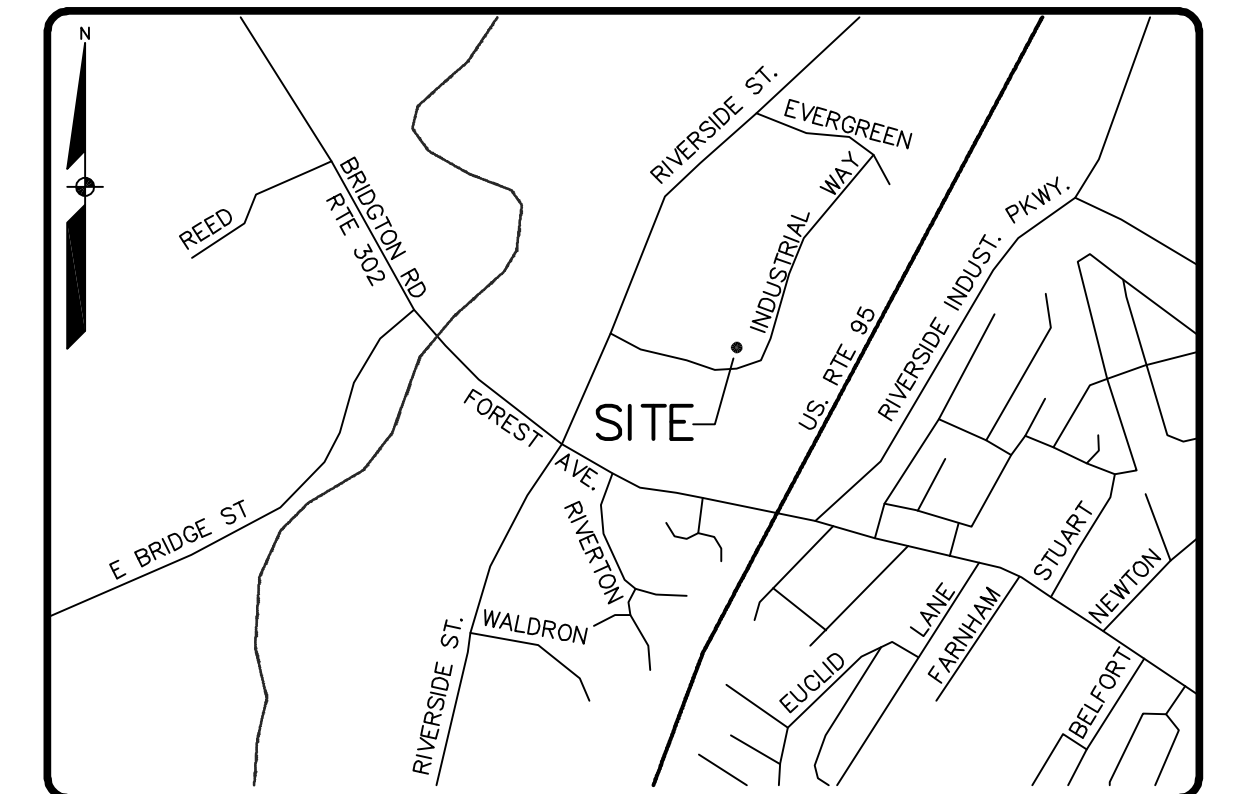
75 John Roberts Rd. Suite 1A 250 Goddard Rd. Suite B  
South Portland, ME 04106 Lewiston, ME 04240  
Tel. 207-200-2100 Tel. 207-783-5656



SCALE: 1" = 40'

LIST OF ABUTTERS:

KEY	ABUTTER	BOOK/PAGE
A	STAG PORTLAND, LLC	17249/278
B	DIRIGO CAPITAL HOLDINGS, LLC	24876/5
C	HANNAFORD BROS. CO.	20702/308
D	MAINE TURNPIKE AUTHORITY	-



LOCATION MAP

NTS

SHEET INDEX

SHEET	TITLE
1	COVER
2	EXISTING CONDITIONS PLAN
3	SITE PLAN
4	GRADING AND UTILITY PLAN
5	LANDSCAPE PLAN
6	DETAILS
7	DETAILS