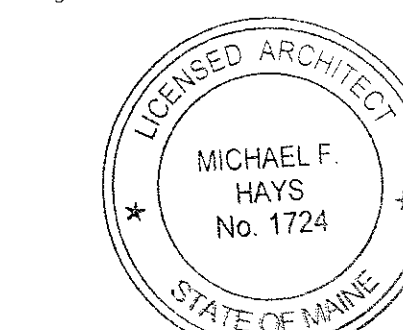


GRANT HAY
ASSOCIATES

ARCHITECTURE & INTERIOR DESIGN
P.O. BOX 6179 FALMOUTH MAINE 04105
207.871.5900 www.granthay.com

SCALE



Michael F. Hays

REV. 10/15

8.26.15
DOORS 101, 102,
103 & 109

DRAWING NAME

TEENANT IMPROVEMENTS
DEERFIELD 91 INDUSTRIAL LLC

PORTLAND, MAINE

81 INDUSTRIAL WAY

1/HEET

CODE
COMPLIANCE
PLAN

DATE
27 JUL '15

SCALE
1/8"=1'-0"

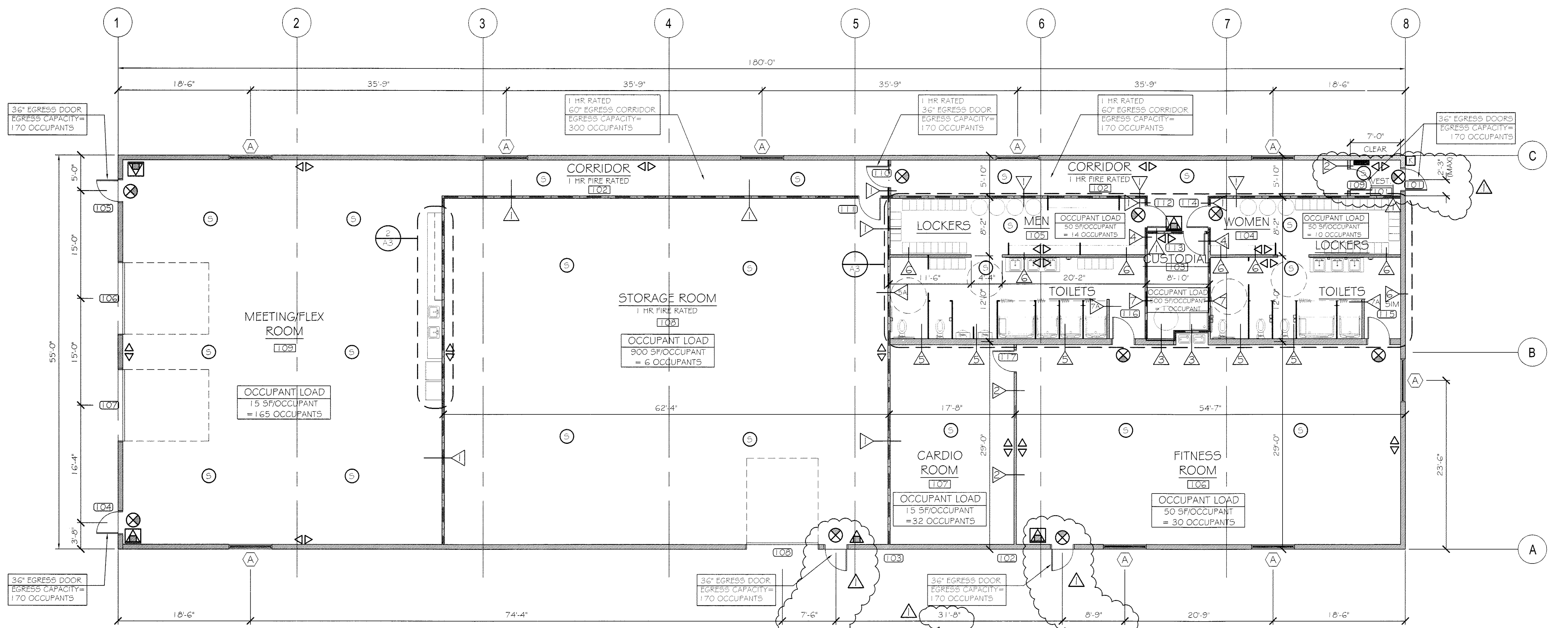
DRAWN
MFH/mgk

JOB NO.
150791

1/HEET

A1

COPYRIGHT
REPRODUCTION OR REV. OF THIS
DOCUMENT WITHOUT WRITTEN
PERMISSION FROM GRANT HAY/
ASSOCIATES IS PROHIBITED.



NFPA LEGEND

- EXIT LIGHT
- FIRE EXTINGUISHER w/ BRACKET
- FIRE EXTINGUISHER w/ SEMI-RECESSED CABINET
- EMERGENCY LIGHT
- SMOKE DETECTOR w/ AUDIBLE BASE
- KNOCK BOX
- ANNUNCIATOR PANEL

OCCUPANT LOADS

NFPA 101 LIFE SAFETY (2012 ED.)	25.5 (BULK AREA)
IBC (2012 ED.)	25.5 (OCC. TABLE) 1004.11

CODE COMPLIANCE PLAN

SCALE: 1/8" = 1'-0"

NOTES:

1. KNOX BOX LOCATION SHALL BE VERIFIED BY THE AHJ.
2. ANNUNCIATION PANEL LOCATION SHALL BE VERIFIED BY THE AHJ.
3. ALARM SYSTEM SHALL BE INTERCONNECTED THROUGHOUT BUILDING.
4. REFER TO SHEET A4 FOR ACCESSIBILITY DETAILS & NOTES.

CODE ANALYSIS

NFPA 101 LIFE SAFETY CODE - 2012 Edition

Building Classification: 9,900 sf Total - Assembly (6,900 sf) & Storage (3,000 sf)
Construction Type: II0000
Hazard Classification: Ordinary Hazard
Occupant Loads:
Meeting/Flex @ 15 sf/occupant = 165
Exercise Room (cardio) @ 15 sf/occupant = 32
Exercise Room (equipment) @ 50 sf/occupant = 30
Lockers @ 50 sf/occupant = 24
Storage/Custodial @ 500 sf/occupant = 6
Total Occupant Load = 258

Separation of Use Rating: 1 hour
Janitor, Mech, Stor Rating: 1 hour if over 100 sf
Minimum Headroom: 7'-6" at occupied areas

Building Uses Assembly/Storage

Max. Allowable Travel Distance: 200'
Max. Allowable Common Path: 75'
Max. Dead End Corridor Length: 20'
Minimum Egress Corridor Width: 44"
Minimum Number of Required Exits: 2
Minimum Exit Access Corridor rating: 1 hr
Separation of exits: 0.5 diagonal distance = 94'
Minimum Egress Door Width: 36"
Exit Lighting: Required
Emergency Lighting: Required
Fire Alarm System: Not Required
Fire Sprinkler System: Not Required
Portable Fire Extinguishers: Required

2009 INTERNATIONAL BUILDING CODE

Use Group Classification: 9,900 sf Total - A-3 @ 6,900 sf / S-2 @ 3,000 sf
Occupant Loads:
Meeting/Flex @ 15 sf/occupant = 165
Exercise Room (cardio) @ 15 sf/occupant = 32
Exercise Room (equipment) @ 50 sf/occupant = 30
Lockers @ 50 sf/occupant = 24
Storage/Custodial @ 500 sf/occupant = 6
Total Occupant Load = 258

Area Use Separation Ratings: 1 hour
Janitor, Mech & Storage Rooms: 1 hour if over 50 sf but under 100 sf

Building Limitations

Construction Type: 2B
Maximum Height: 2 story @ A-3 / 3 story @ S-2
Maximum Area / Floor: 9,500 sf @ A-3 / 26,000 sf @ S-2

Fire Resistance Ratings

Structural Frame: None
Load Bearing Exterior Walls: None
Load Bearing Interior Walls: None
Roof/Floor Structure: None
Exit Corridors: 1 hour

Minimum Number of Exits: 2
Maximum Exit Travel Distance: 200' @ A-3 / 300' @ S-2
Maximum Dead End Corridor Length: 20'
Maximum Common Travel Path: 75'
Minimum Corridor Width: 44"

Fire Alarm/Detection System: Not Required
Fire Sprinkler System: Not Required
Portable Fire Extinguishers: Required
Exit Lights: Required
Emergency Lighting: Required

Building Live Loads
Assembly: 100 psf
Corridors: 80 psf
Light Storage: 125 psf

MUBEC (Maine Uniform Building Energy Code) MINIMUM INSULATION VALUES

Per 2009 IECC; Table 502.1.2, 502.2(1) and 502.3

ZONE GA	R-VALUE	U-FACTOR	SHGC
Exterior wall	20.5	0.049	NA
Roof (above deck)	20.0	0.046	NA
Slab (24" band)	15.0	0.052	NA
Frost Wall	7.5	0.133	NA
Doors - Opaque	2.0	0.50	NA
Doors - Glazed	1.25	0.80	NR
Windows	2.9	0.35	NR
Storefront	2.2	0.45	NR