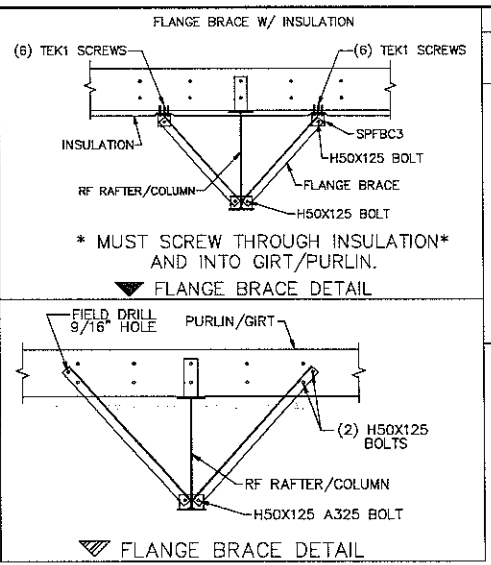
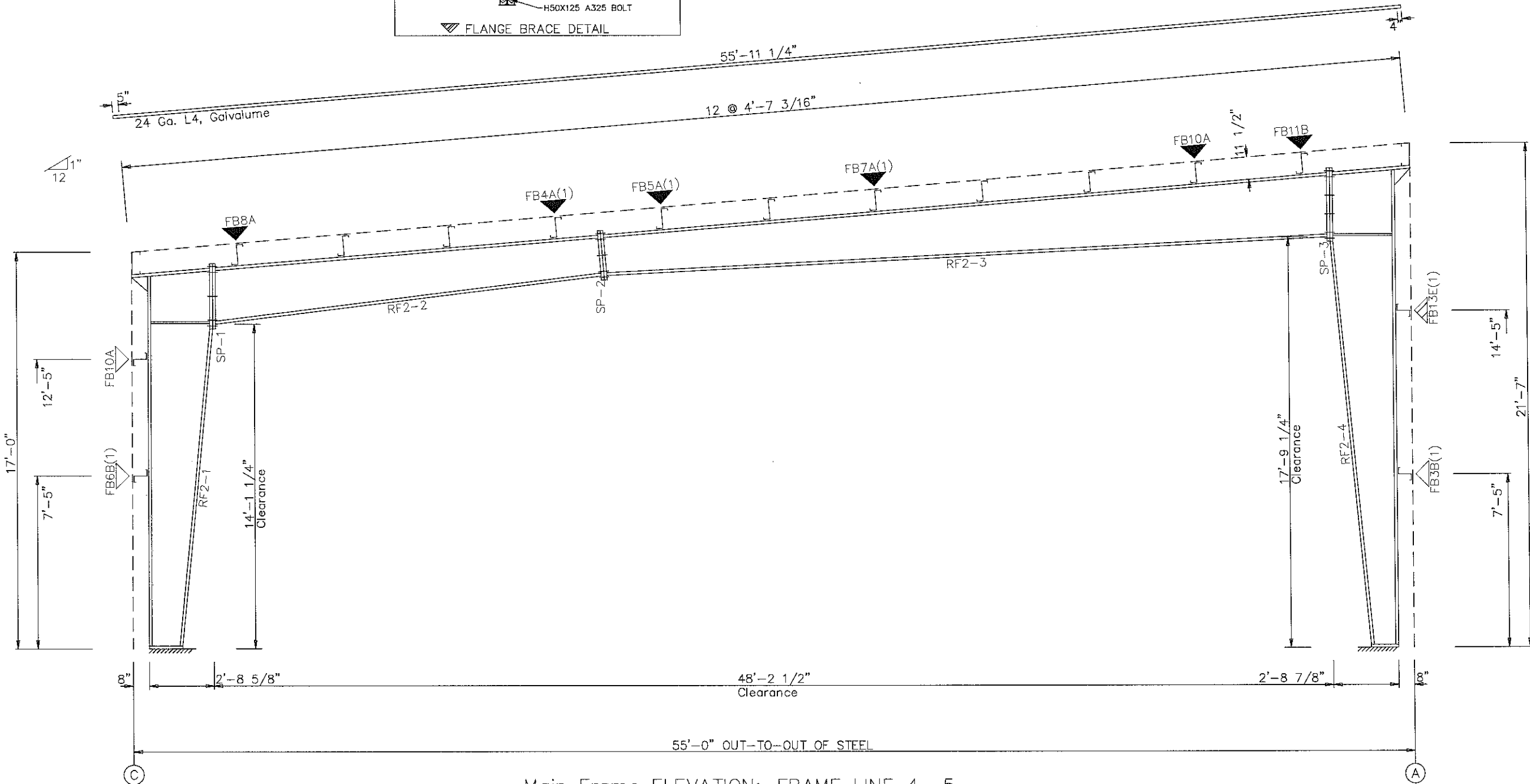


SPLICE BOLT TABLE						
Mark	Qty		Int	Type	Dia	Length
	Top	Bot				
SP-1	4	4	2	A325	1.000	2.75
SP-2	4	4	2	A325	0.750	2.25
SP-3	4	4	4	A325	1.000	2.75

▽ FLANGE BRACES: Both Sides(U.N.)
 FBxB(1)
 B - L20X3/16
 A - L15X1/8
 E - L30X1/4



Mark	Web		Web Plate Length	Outside Flange			Inside Flange		
	Start/End	Thick		W x Thk x Length	W x Thk x Length	W x Thk x Length			
RF2-1	14.0/32.0	0.188	195.1	6 x 1/4" x 192.4	6 x 1/4" x 60.3				
RF2-2	26.0/22.7	0.219	82.9	8 x 1/4" x 40.4	6 x 3/8" x 105.7				
	22.7/18.0	0.188	120.0	6 x 1/4" x 80.7	6 x 3/8" x 83.0				
RF2-3	18.0/21.9	0.149	120.0	6 x 5/16" x 120.0	6 x 1/4" x 120.1				
	21.9/25.7	0.188	120.0	6 x 1/2" x 120.0	6 x 1/4" x 300.1				
	25.7/27.6	0.219	60.0	6 x 5/16" x 120.0	6 x 3/8" x 74.0				
	27.6/30.0	0.250	76.5	6 x 1/4" x 136.5					
RF2-4	32.0/23.0	0.219	126.0	8 x 1/4" x 40.4	6 x 5/8" x 89.6				
	23.0/11.0	0.188	120.0	6 x 1/4" x 246.0	6 x 1/2" x 120.6				



Main Frame ELEVATION: FRAME LINE 4 5

GENERAL NOTES:
 1. See Detail Sheets for Connection Information.
 2. See Shipping List for Flange Brace Lengths.

CORLE
 404 Sarah Furnace Road - Imbler, PA 16655 (814) 276-9611
ALLAGASH BREWING WAREHOUSE
 55'-0" x 180'-0" x 17'-0" x 21'-7"
 DATE: 7/30/15 REVISION: 01
 ENG: AJR DWN: BJC APPD: AJR

F.O. 19026

REV	DESCRIPTION	DATE
01	SEE CO-01	8-12-15

DRAWING STATUS

FOR APPROVAL: THESE DRAWINGS, BEING FOR APPROVAL, ARE BY DEFINITION NOT FINAL, AND ARE FOR CONCEPTUAL REPRESENTATION ONLY. THEIR PURPOSE IS TO CONFIRM PROPER INTERPRETATION OF THE PROJECT DOCUMENTS. ONLY DRAWINGS ISSUED "FOR CONSTRUCTION" CAN BE CONSIDERED AS COMPLETE.

FOR PERMIT: THESE DRAWINGS, BEING FOR PERMIT, ARE BY DEFINITION NOT FINAL. ONLY DRAWINGS ISSUED "FOR CONSTRUCTION" CAN BE CONSIDERED AS COMPLETE.

FOR CONSTRUCTION: FINAL DRAWINGS.

STATE OF MAINE
 DENNIS L. ZONTS
 No. 12885
 LICENSED PROFESSIONAL ENGINEER