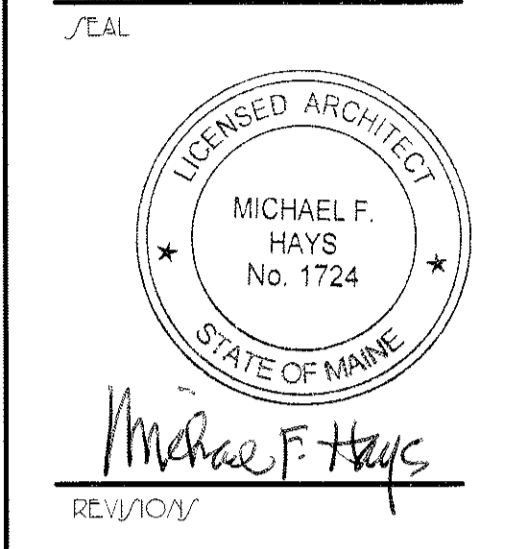


GRANT HAYS
ASSOCIATES

ARCHITECTURE & INTERIOR DESIGN
P.O. BOX 6179 FALMOUTH MAINE 04103
207.871.5900 www.granthays.com



REV:10/15

DRAWING NAME
TENANT IMPROVEMENTS
DEERFIELD 91 INDUSTRIAL LLC
PORTLAND, MAINE
81 INDUSTRIAL WAY

PARTITIONS,
DOORS &
HARDWARE

DATE
27 JUL '15
SCALE
A/ NOTED
DRAWN
MFH/mgk
JOB NO.
150791

JH/ELT
A2

COPYRIGHT
REPRODUCTION OR RELY OF THIS
DOCUMENT WITHOUT WRITTEN
PERMISSION FROM GRANT HAYS
& ASSOCIATES IS PROHIBITED.

ABBREVIATIONS

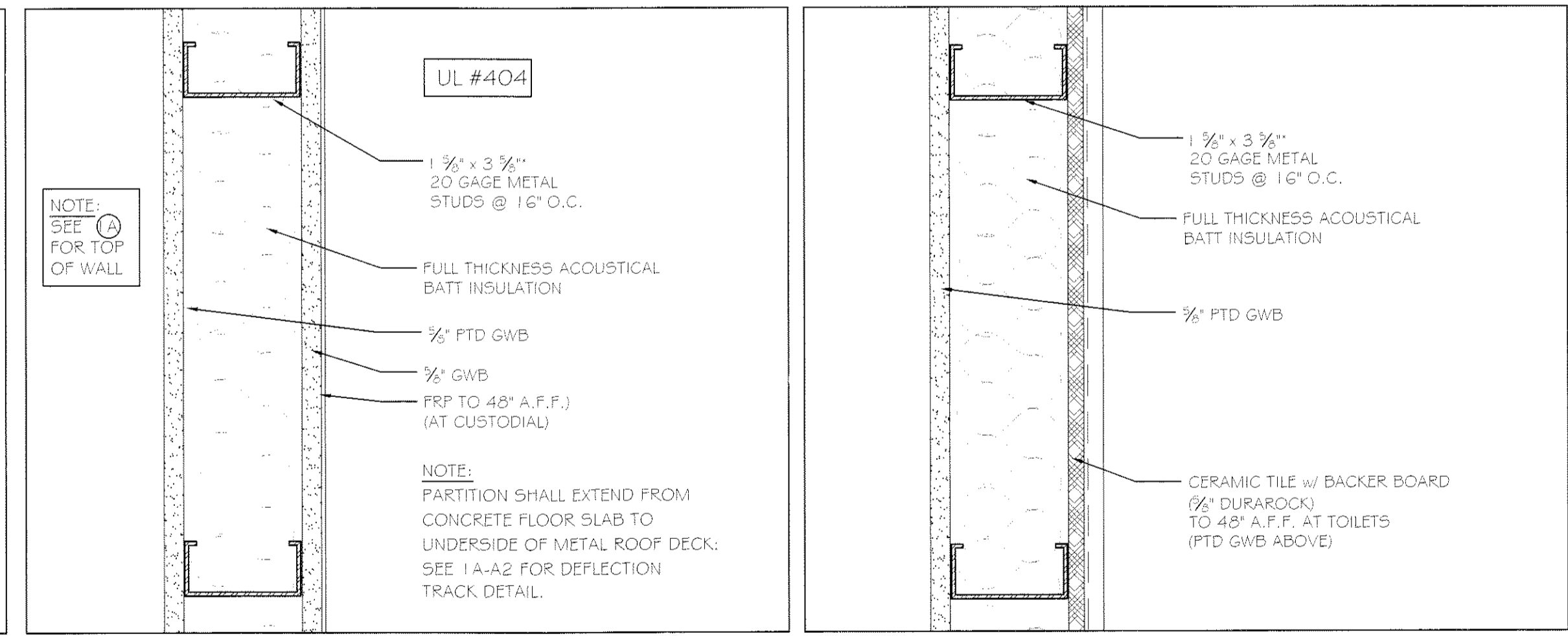
AL	ALUMINUM	HM	HOLLOW METAL	V	VINYL
CM	CONCRETE	INS	INSULATED	W	WIRE
EX	EXISTING	SS	STAINLESS STEEL	WD	WOOD
EM	EMERALD	TS	TEMPERED	W7	WOOD WITH
EMHO	ELECTRO MAGNETIC HOLD-OPENER GLASS	TR	THERMAL BREAK TRANSITION STRIP		
GL	GLASS	TI	THERMAL INSULATED TRANSITION STRIP		

DOOR SCHEDULE

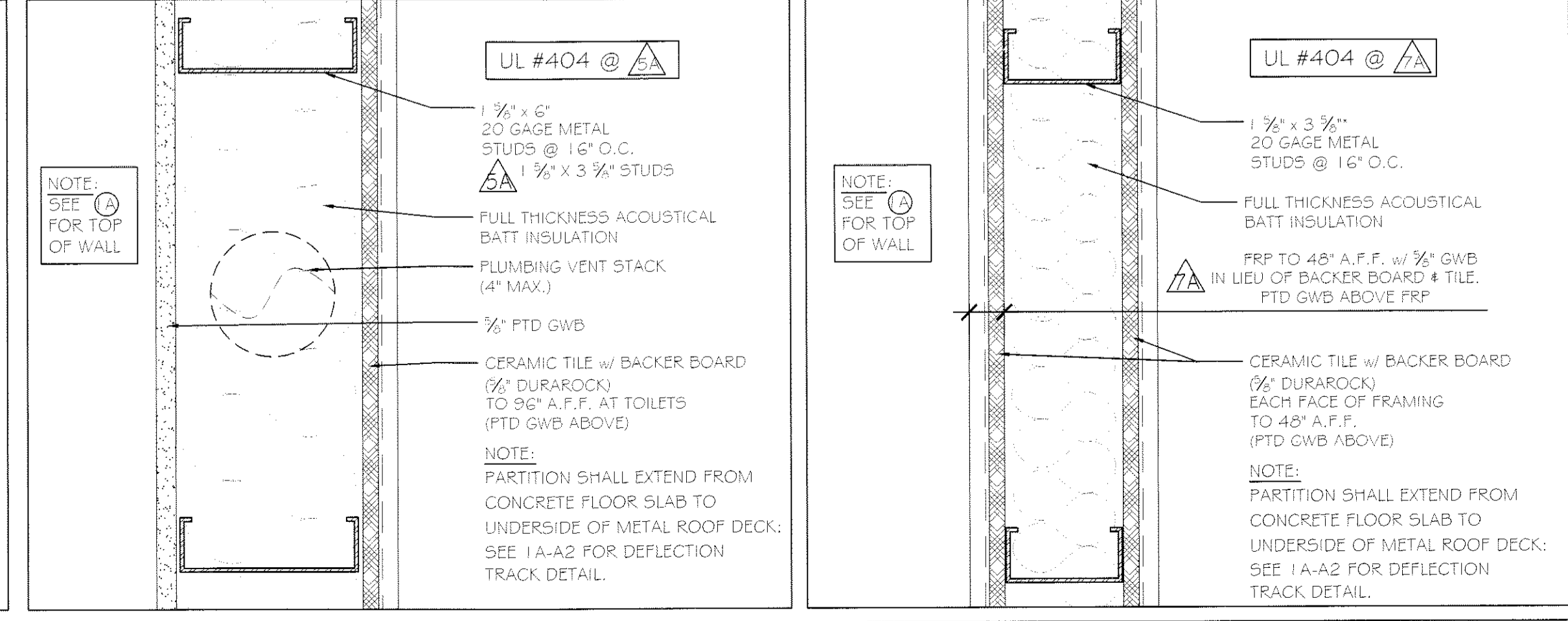
NO.	TYPE	SIZE (w x h)	THK	INSUL	HDWE	FR	GLASS		REMARKS	FRAMES			THRESHOLDS			
							TYPE	SIZE		TYPE	FR	PROFILE	DETAILS HEAD	DETAILS JAMB	MAT'L	DETAILS SILL
101	A	3070	1		HW-1	NO	T/TH	FULL		A	NO	ALUM		ALUM	1/2" x 5"	
102	A	3070	1		HW-1	NO	T/TH	FULL		A	NO	ALUM		ALUM	1/2" x 5"	
103	B	3070	1	R-10	HW-2	NO	NONE	NONE	PRIMER ONLY	B	NO	MAS		ALUM	1/2" x 5"	
104	A	3070	1		HW-1	NO	T/TH	FULL		A	NO	ALUM		ALUM	1/2" x 5"	
105	A	3070	1		HW-1	NO	T/TH	FULL		A	NO	ALUM		ALUM	1/2" x 5"	
106	C	10' x 12'	MFGR	R-10	MFGR	NO	T/TH	FULL		C	NO	MAS		CONC		
107	C	10' x 12'	MFGR	R-10	MFGR	NO	T/TH	FULL		C	NO	MAS		CONC		
108	G	10' x 12'	MFGR	R-10	MFGR	NO	NONE	NONE	PRIMER ONLY	C	NO	MAS		CONC		
109	A	3070	1		HW-3	NO	TEMP	FULL		A	NO	ALUM		ALUM	1/2" x 5"	
110	D	3070	1		HW-4	1 HR	FIRE LITE	24"x36"		D	1 HR	DW		TS		RUBBER
111	E	3070	1		HW-5	1 HR	NONE	NONE		D	1 HR	DW		TS		RUBBER
112	E	3070	1		HW-6	1 HR	NONE	NONE		D	1 HR	DW		TS		RUBBER
113	E	3070	1		HW-5	1 HR	NONE	NONE		D	1 HR	DW		TS		RUBBER
114	E	3070	1		HW-6	1 HR	NONE	NONE		D	1 HR	DW		TS		RUBBER
115	E	3070	1		HW-6	NO	NONE	NONE		D	NO	DW		TS		RUBBER
116	E	3070	1		HW-6	NO	NONE	NONE		D	NO	DW		TS		RUBBER
117	F	3070	1		HW-7	NO	TEMP	24"x36"		D	NO	DW		TS		RUBBER

HW-1 EXTERIOR SINGLE DOOR - STOREFRONT	HW-3 INTERIOR SINGLE DOOR - STOREFRONT	HW-6 INTERIOR WOOD SINGLE DOOR
3 BUTTS	3 BUTTS	3 BUTTS
1 EXIT DEVICE WITH EXTERIOR PULL	1 EXIT DEVICE WITH PULL	1 PUSH PLATE/PULL SET
1 CLOSER - PARALLEL ARM	1 CLOSER - PARALLEL ARM	1 CLOSER - PARALLEL ARM
1 THRESHOLD - ADA	1 DOOR BOTTOM SWEEP	1 KICKPLATE
1 DOOR BOTTOM SWEEP	1 JAMB & HEAD WEATHERSTRIPPING SET	1 DOOR STOP
1 JAMB & HEAD WEATHERSTRIPPING SET		2 FRAME SILENCERS
HW-2 EXTERIOR HM SINGLE DOOR	HW-4 INTERIOR RATED HM SINGLE DOOR	HW-7 INTERIOR WOOD SINGLE DOOR
3 BUTTS	3 BUTTS	3 BUTTS
1 CLOSER - PARALLEL ARM	1 EXIT DEVICE WITH PULL	1 LEVER LATCHSET - PASSAGE FUNCTION
1 LEVER LOCKSET - STORE ROOM FUNCTION	1 CLOSER - PARALLEL ARM	1 CLOSER - PARALLEL ARM
1 THRESHOLD - ADA	1 DOOR STOP	1 DOOR BOTTOM SOUND SEAL
1 DOOR BOTTOM SWEEP	2 FRAME SILENCERS	1 JAMB & HEAD SOUND SEAL
1 JAM & HEAD WEATHERSTRIPPING SET		1 KICKPLATE
1 KICKPLATE		1 DOOR STOP
HW-5 INTERIOR RATED WOOD SINGLE DOOR		
3 BUTTS		
1 LEVER LOCKSET - STORE ROOM FUNCTION		
1 CLOSER - PARALLEL ARM		
1 KICKPLATE		
1 DOOR STOP		

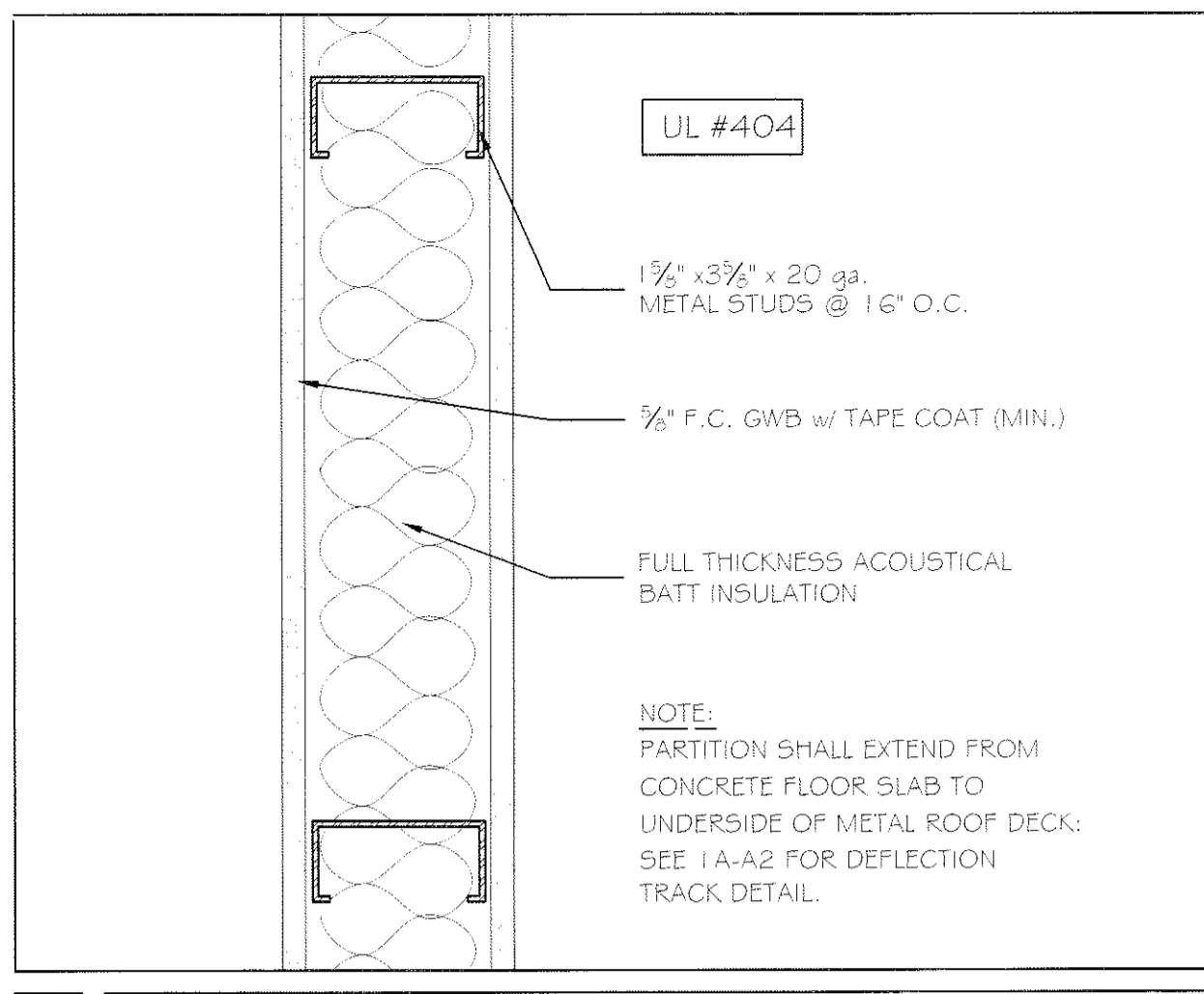
HARDWARE TYPES



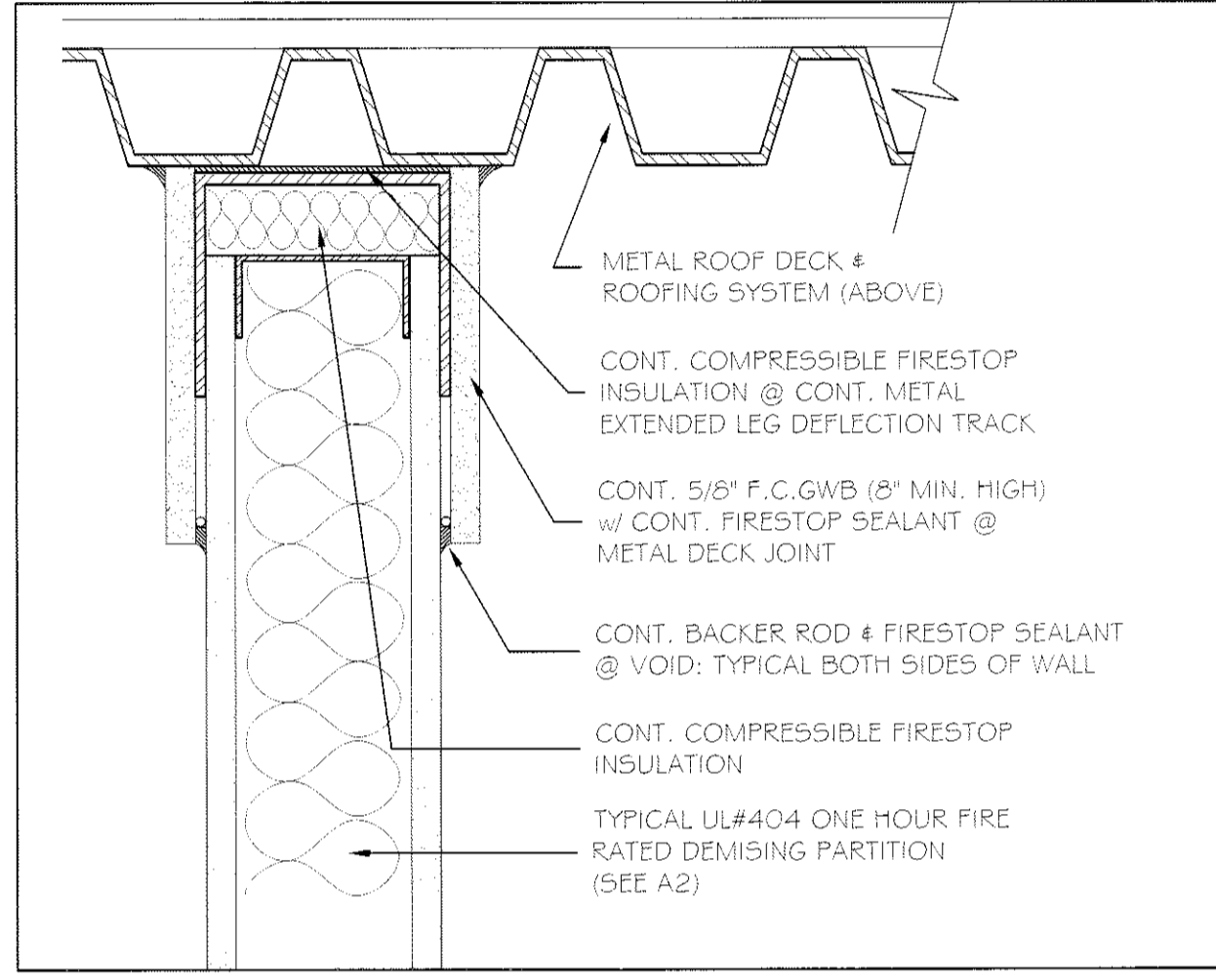
④ TYPICAL PARTITION (1 HR RATED) 3" = 1'-0"



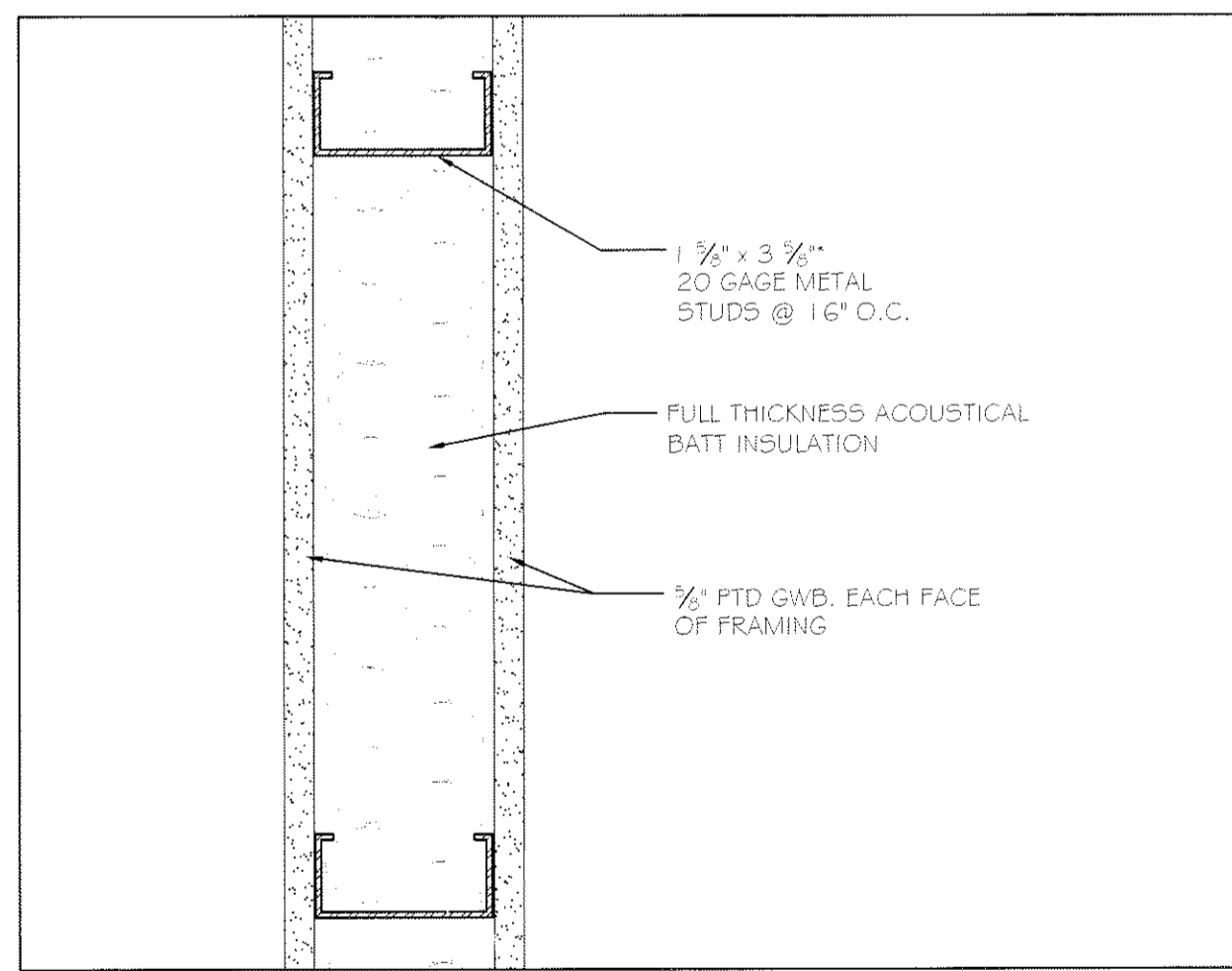
⑤ TYPICAL PARTITION (1 HR RATED) & A (1 HR RATED) 3" = 1'-0"



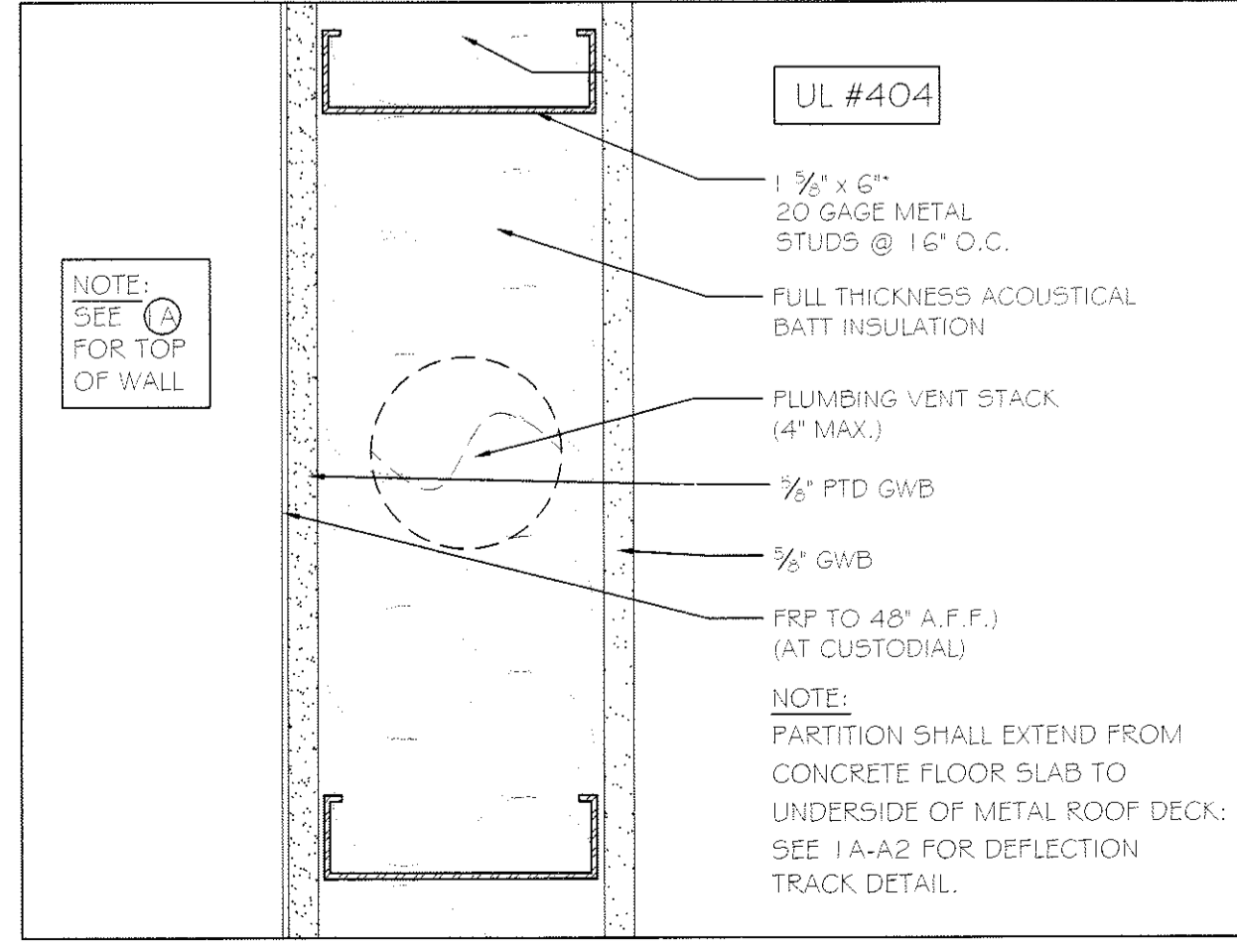
① TYPICAL 1 HR RATED PARTITION 3" = 1'-0"



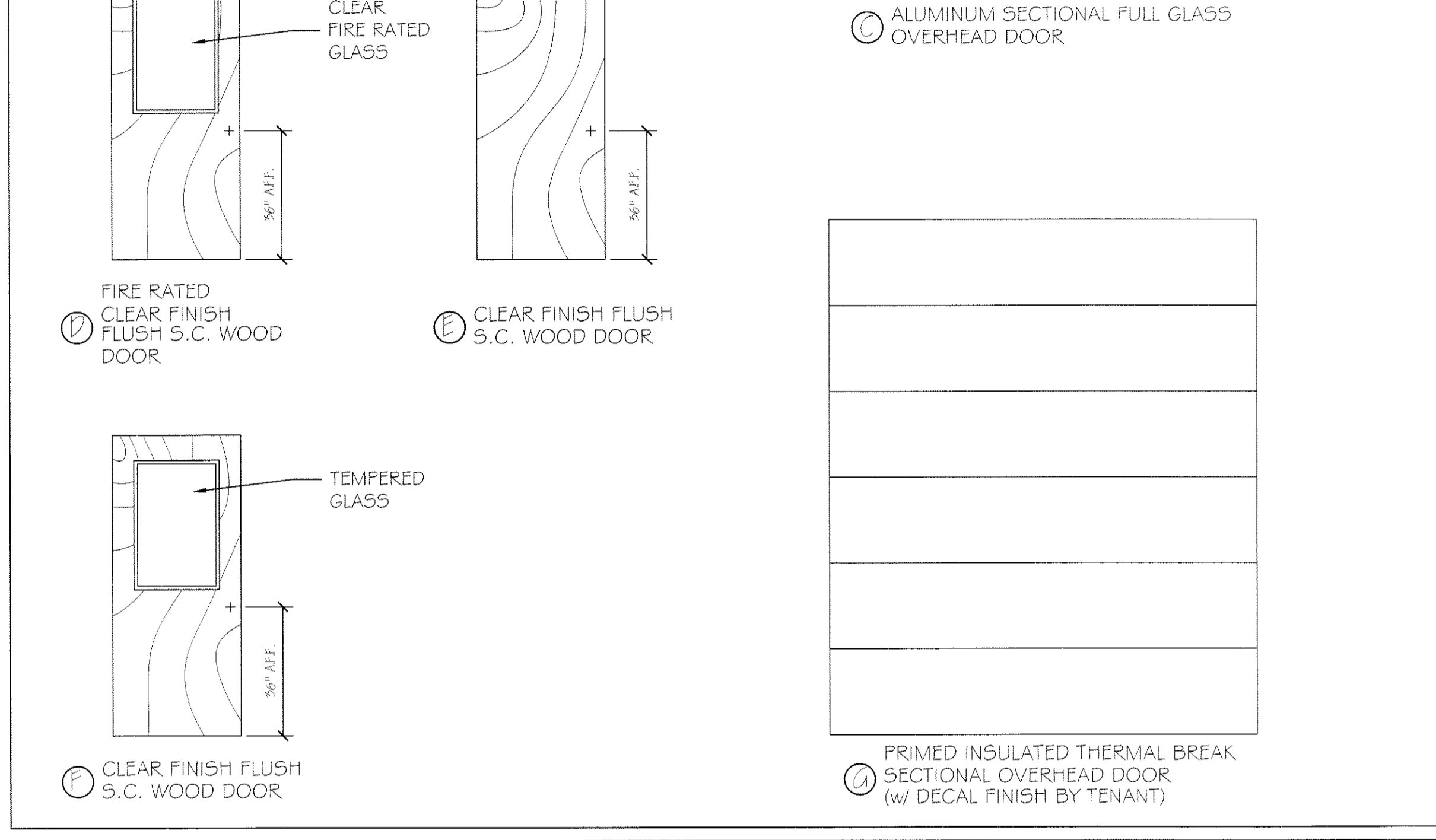
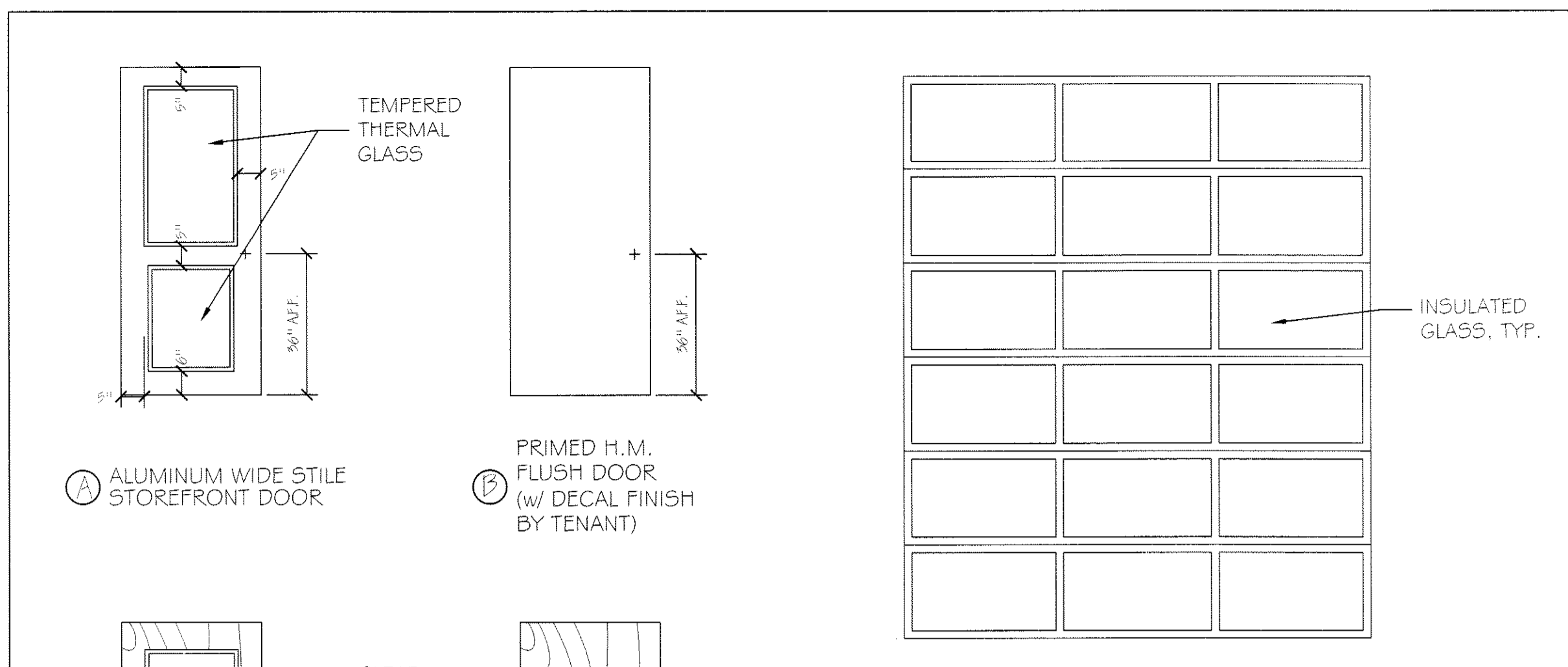
③ TYP. 1 HR RATED PARTITION @ DEFLECTION TRACK 3" = 1'-0"



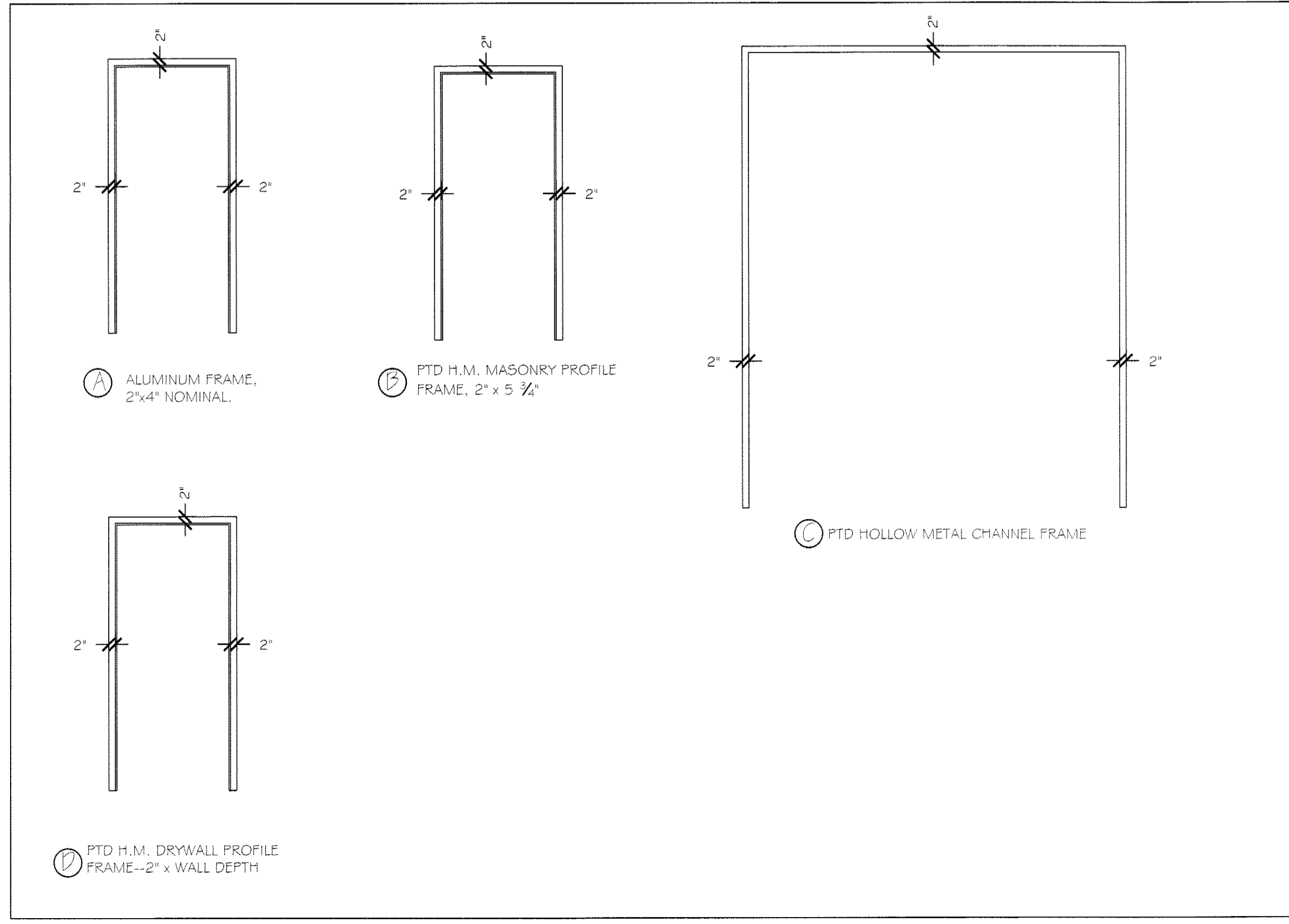
② TYPICAL PARTITION 3" = 1'-0"



③ TYPICAL PARTITION (1 HR RATED) 3" = 1'-0"



DOOR TYPES 3/8" = 1'-0"



FRAME TYPES 3/8" = 1'-0"