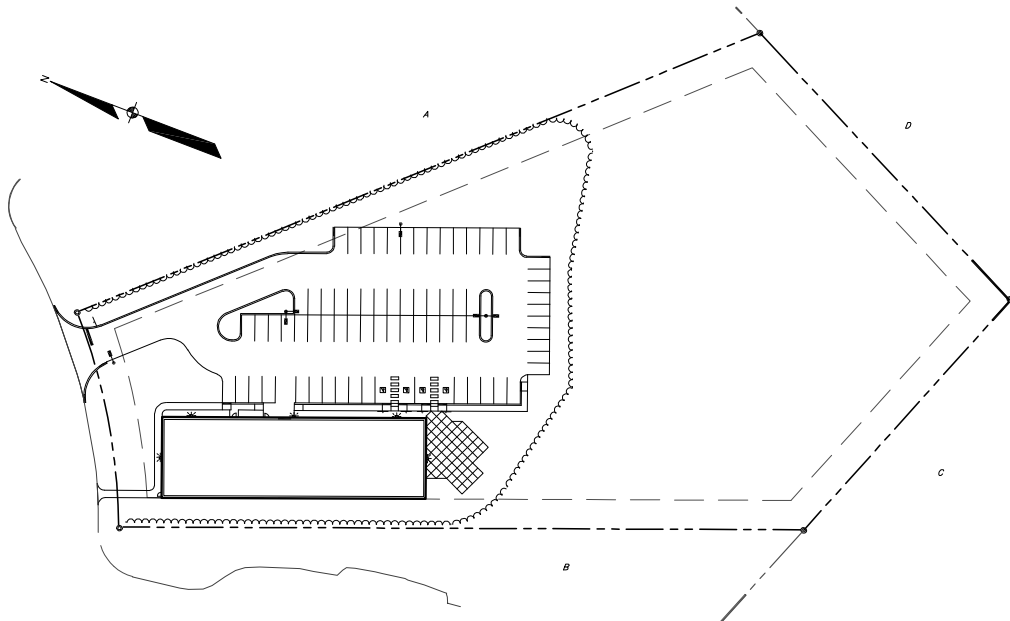
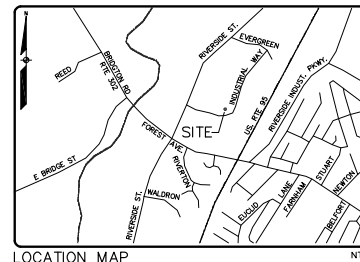


LOT 5 INDUSTRIAL WAY

91 INDUSTRIAL WAY
 PORTLAND, ME 04103

APPLICANT:
 DEERFIELD 91
 INDUSTRIAL, LLC.
 1 CANAL PLAZA
 PORTLAND, ME 04101



SCALE: 1" = 40'

ENGINEER/SURVEYOR:

SEBAGO
 TECHNICS
 WWW.SEBAGOTECHNICS.COM
 75 John Roberts Rd. Suite 1A South Portland, ME 04106 Tel. 207-200-2100
 250 Goddard Rd. Suite B Lewiston, ME 04240 Tel. 207-783-9656

SHEET INDEX

SHEET TITLE
1 COVER
2 EXISTING CONDITIONS PLAN
3 SITE PLAN
4 GRADING AND UTILITY PLAN
5 LANDSCAPE PLAN
6 DETAILS
7 DETAILS

LIST OF ABUTTERS:

KEY ABUTTER	BOOK/PAGE
A STAG PORTLAND, LLC	17249/278
B DIRIGO CAPITAL HOLDINGS, LLC	24876/5
C HANNAFORD BROS. CO.	20702/308
D MAINE TURNPIKE AUTHORITY	-