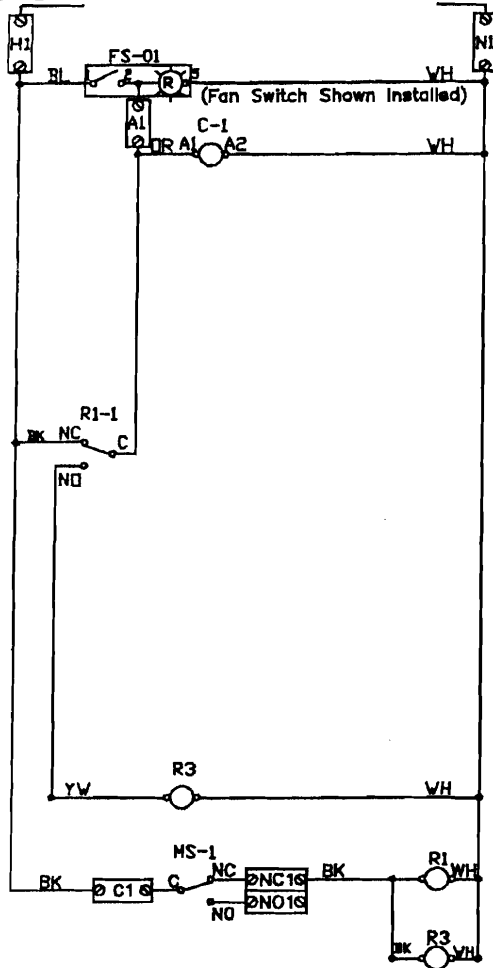


CONTROL INPUT 120VAC H1=LINE, N1=NEUTRAL 15A BKR - DO NOT WIRE TO SHUNT TRIP BREAKER

220V/1Ph, W/ 1 Exhaust Fan, Relay w/ 2 -DPDT On/Off w/ Supply Fan, Exhaust on in fire condition



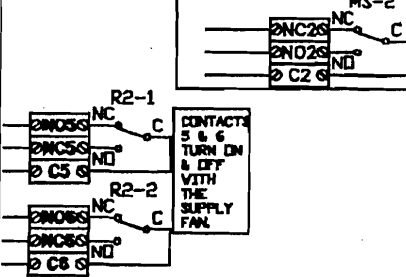
Label	Description
ST	Starter
FS	Fan Switch (Lighted)
MS	MicroSwitch (Ansul/PyroChem)
R1	Relay DPDT
LS	Light Switch (1400W max)
L	Hood Light(s)
GP	General Purpose Relay DPDT
TX	Transformer
C	Contactor
GR	Ground
AF	Air Flow Switch

Spare Relay Contacts	MS-1, MS-2 MicroSwitch
C-RD	Ansul Pyrochem C-RD
NO-BL	NO-BK NO-BK
NC-PR	NC-BR NC-BR

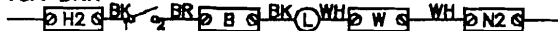
1 NC 3
4 NO 6
7 COM 2
A COM B

SPARE RELAY CONTACTS CAN BE USED TO CONTROL ITEMS REQUIRING SHUT DOWN WHEN THE FIRE SYSTEM DISCHARGES, SUCH AS SHUNT TRIP, SIGNALS, ETC

RELAY SPARE RELAY CONTACTS
TERMINAL FOR FIELD WIRING TO BUILDING FIRE PANEL, DRY CONTACTS FOR SIGNAL ONLY

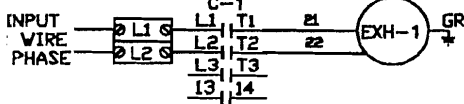


LIGHT INPUT 120VAC H2-H5=LINE, N2-N5=NEUTRAL 15A BKR LS-01



Motor	Type	PH	Volt	HP	FLA	BREAKER
Exh-1	Exh	1	230	1.5	10.2	15 Amp

1 PHASE 230V



NOTES

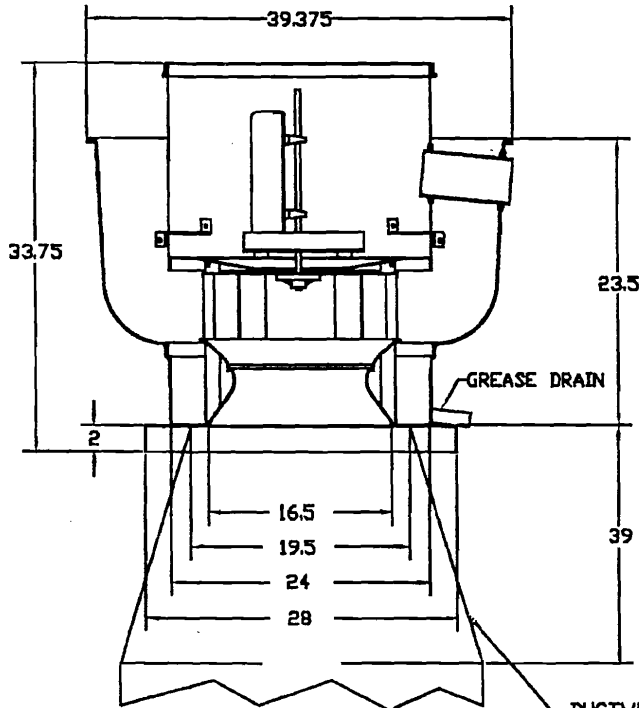
— DENOTES FIELD WIRING
— DENOTES INTERNAL WIRING

WIRE COLOR

BK - BLACK	YV - YELLOW
BL - BLUE	GY - GRAY
BR - BROWN	PR - PURPLE
OR - ORANGE	OR/BL - ORANGE/BLUE (STRIPE)
RD - RED	BL/RD - BLUE/RED (STRIPE)
VH - WHITE	RD/GN - RED/GREEN (STRIPE)

DRAWING SHOWN DE-ENERGIZED
NOTE: IF WALL MOUNT PREWIRE, OR FIELD INSTALLED FIRE SYSTEM MICROSWITCH, THE TERMINALS SHOWING FACTORY WIRING MUST BE FIELD WIRED.

Centrifugal Upblast Belt (Fan #1 NCA16FA)



FEATURES:

- ROOF MOUNTED FANS
- RESTAURANT MODEL
- UL762
- AMCA SOUND AND AIR CERTIFIED
- WIRING FROM MOTOR TO DISCONNECT SWITCH
- WEATHERPROOF DISCONNECT
- HIGH HEAT OPERATION 300°F (149°C)
- GREASE CLASSIFICATION TESTING

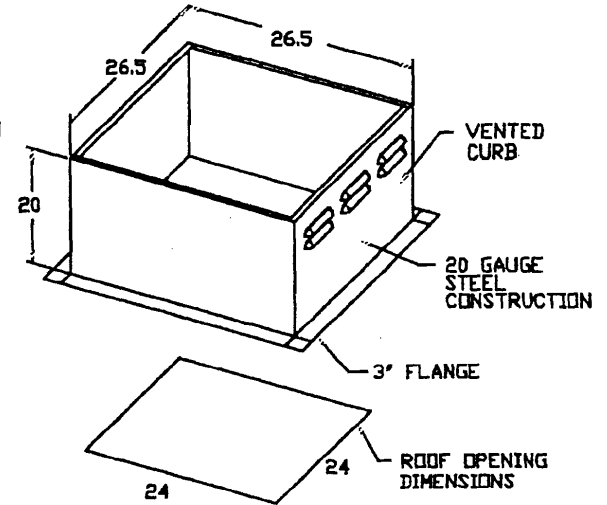
NORMAL TEMPERATURE TEST
EXHAUST FAN MUST OPERATE CONTINUOUSLY WHILE EXHAUSTING AIR AT 300°F (149°C) UNTIL ALL FAN PARTS HAVE REACHED THERMAL EQUILIBRIUM, AND WITHOUT ANY DETERIORATING EFFECTS TO THE FAN WHICH WOULD CAUSE UNSAFE OPERATION.

ABNORMAL FLARE-UP TEST
EXHAUST FAN MUST OPERATE CONTINUOUSLY WHILE EXHAUSTING BURNING GREASE VAPORS AT 600°F (316°C) FOR A PERIOD OF 15 MINUTES WITHOUT THE FAN BECOMING DAMAGED TO ANY EXTENT THAT COULD CAUSE AN UNSAFE CONDITION.

OPTIONS:

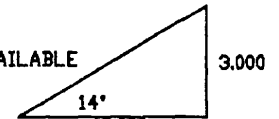
- GREASE BOX
- HINGED FAN
- PITCHED CURB

DUCTWORK BETWEEN EXHAUST RISER ON HOOD AND FAN (BY OTHERS)



PITCHED CURBS ARE AVAILABLE FOR PITCHED ROOFS.

SPECIFY PITCH:
EXAMPLE: 7/12 PITCH = 30° SLOPE



FAN INFORMATION

FAN UNIT NO.	MODEL	TAG	EXHAUST CFM	SUPPLY CFM	SP.	RPM	HP.	PHASE	VOLY	FLA	WEIGHT LB	SHAFT DIA.	SONES
1	NCA16FA		3250	0	1.250	1175	1.500	1	230	10.2	164.54	0.750	14.8



CUSTOMER APPROVAL TO MANUFACTURE:

- Approved as Noted
- Approved with NO Exception Taken
- Revise and Resubmit

SIGNATURE _____

Your Title _____ Date _____



JOB Ricetta's

LOCATION

DATE 2/11/2008

JOB # 671858

DWG # Ricetta's

DRAWN BY BFC

FAN INFORMATION

FAN UNIT NO.	FAN UNIT MODEL #	EXHAUST FAN									SUPPLY FAN									
		MODEL	TAG	CFM	S.P.	RPM	H.P.	Ø	VOLT	FLA	BLOWER	HOUSING	TAG	CFM	S.P.	RPM	H.P.	Ø	VOLT	FLA
1	NCA16FA	NCA16FA		3250	- 1.250"	1175	1.500	1	230	10.2										
2	NCA14FA	NCA14FA		1600	- 0.750"	1034	0.500	1	115	8.0										

FAN OPTIONS

FAN NO.	OPTION (Qty. - Descr.)
1	1 - Grease Box
2	1 - I 19-BDD Damper

CURB ASSEMBLIES

NO.	ON FAN	ITEM	SIZE
1	# 1	Curb	26.5"W x 26.5"L x 20.0"H Pitched (SPECIFY) Vented Hinged
2	# 2	Curb	23.0"W x 23.0"L x 20.0"H Pitched (SPECIFY) Vented

ROOF PITCH FOR CURB(S) MUST BE SPECIFIED PRIOR TO RELEASING ORDER
Flat Roof ___:12

CUSTOMER APPROVAL TO MANUFACTURE:

Approved as Noted

Approved with NO Exception Taken

Revise and Resubmit

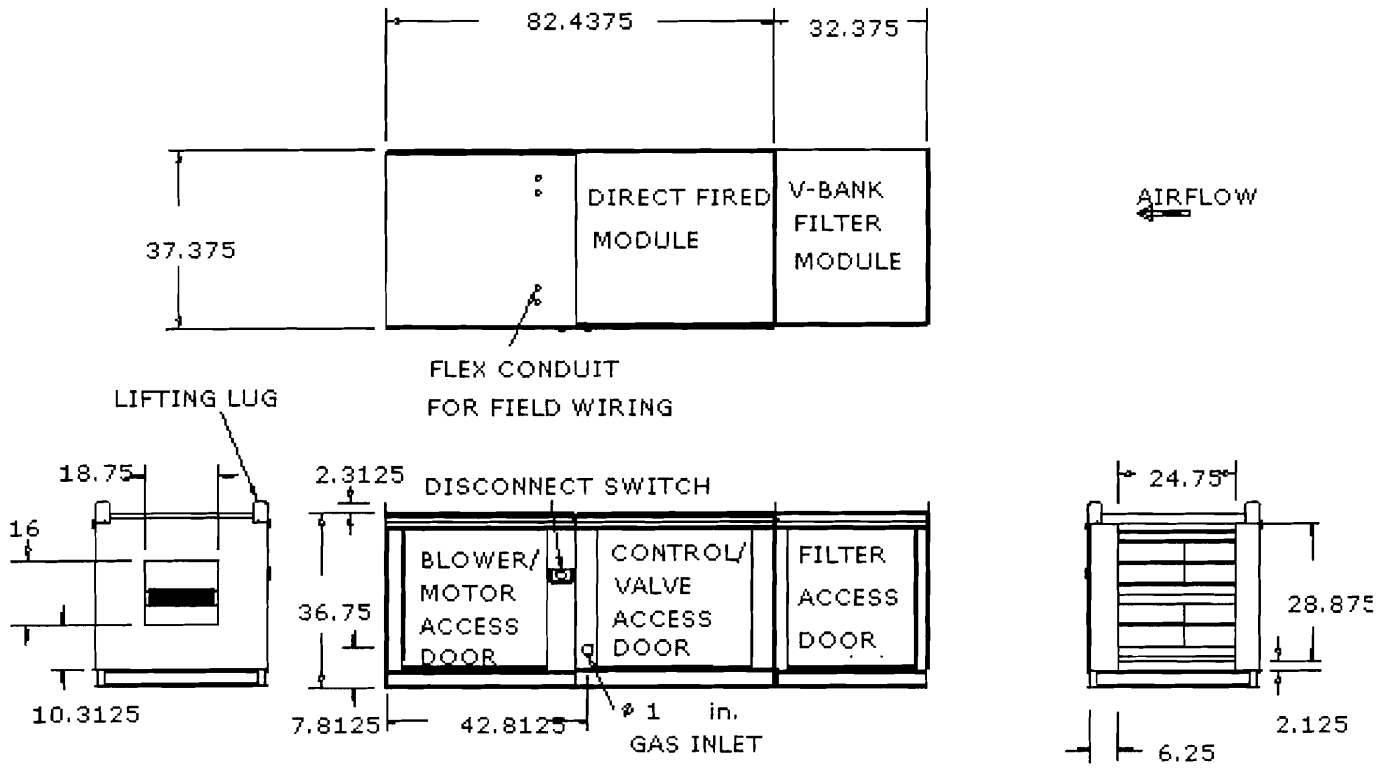
SIGNATURE _____

Your Title _____ Date _____

CAPTIVE AIR	JOB Ricetta's	
	LOCATION	
	DATE 2/11/2008	JOB # 671858
	DWG # Ricetta's	DRAWN BY BFC

Fired Heaters w/Extended Shaft, Standard Galvanized Construction, 3/4" Rear Flange, LF120S Actuator Included

- "Insulation" for V-bank Intake Option.





Order # 763090 - Ricetta's MAU

Close



Fan #1 A2-D.500-G15 (920 lbs.)

Direct Gas Fired Heated Make Up Air Unit with 15" Blower

Supply Motor:

Model 003180S1C184T, 3 HP, 1 Phs, 230 V, 17.0 FLA, ODP (Open Drip Proof)

Supply Motor Pulleys:

Part Type	Qty	Browning #	Turns Out
Belt	2	BX51	
Blower Pulley	1	2BK65H	
Bushing	1	H-1	
Motor Pulley	1	2VP42 x 1 1/8	3

Burner:

Min Output BTU: 18,333 BTU/Hr
 Max Output BTU: 550,000 BTU/Hr
 Size: 12" long
 Gas Type: Natural

Supply Performance:

Volume: 4200 cfm RPM: 987 TS: 3876 ft/min
 Max. Recommended RPM: 1400
 SP: 0.783" w.g.
 (0.500" Ext. + 0.2449" Int. + 0.038" Opt.)
 BHP: 2.59
 Altitude: 0' Winter Temp: 0°F
 BTU: 354816 Temp Rise: 80°F

Installation Information:

Gas Inlet Pressure: 7 in. w.c. - 14 in. w.c.
 Max Unit Ampacity: 22.29 amps
 Unit Voltage: 1 phs 230 V

Construction Features:

Construction Features

Housing constructed of heavy duty G90 galvanized steel • Forward curved centrifugal blower wheel • Vibration isolation • Adjustable drive assemblies • Adjustable motor mount • Ball bearing motors • Heavy duty, pre-lubricated bearings rated for 200,000 hours of operation • Static resistant belts • Service doors on both sides • Horizontal & down discharge • Large intake area ensures low pressure drop across unit • Spring loaded profile plates automatically adjust for any airflow - no manual setting required! • Weatherproof safety disconnect switch • Modular design provides design flexibility • Fully insulated casing

Blower:

15" forward curved, centrifugal blower. Permanently lubricated ball bearings. Galvanized finish. 1" x 25" Shaft. 2000-7500 CFM. 1800 max. RPM. Used in heated and non-heated supply fans.

Temp Control:

Maxitrol 14 • 40-80°F Discharge Temp Control • Remote Panel • Room Override

Intake:

V-Bank for Size # 2 Modular Heater with Foam EZ Klean Filters. For indoor installation.

Filters:

8x EZ Klean Non-Woven Polyester Metal Mesh Filter. 16"x 20"x 2" Used for heater and supply fan intakes. 23 layers of expanded aluminum and one layer of non-woven polyester. (3422)

Selected Options:

- Gas Pressure Gauge, 0-35", 2.5" Diameter, 1/4" Thread Size
- Gas Pressure Gauge, -5 to +15 Inches Wc., 2.5" Diameter, 1/4" Thread Size
- Indoor Hanging Cradle For The Size 2 Direct Fired Unit
- Clogged Filter Switch with Light on Remote Panel
- Motorized Back Draft Damper 22.75" X 24" for Size 2 Standard & Modular Direct