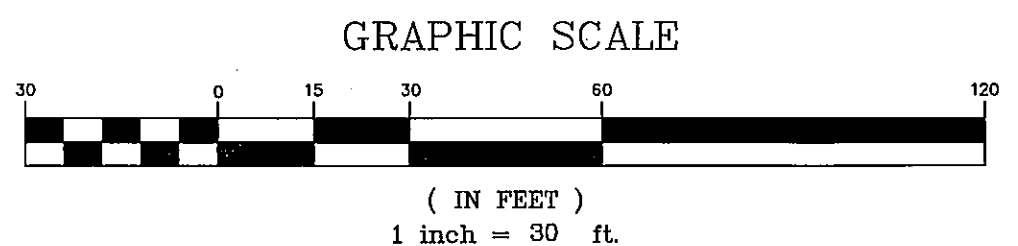
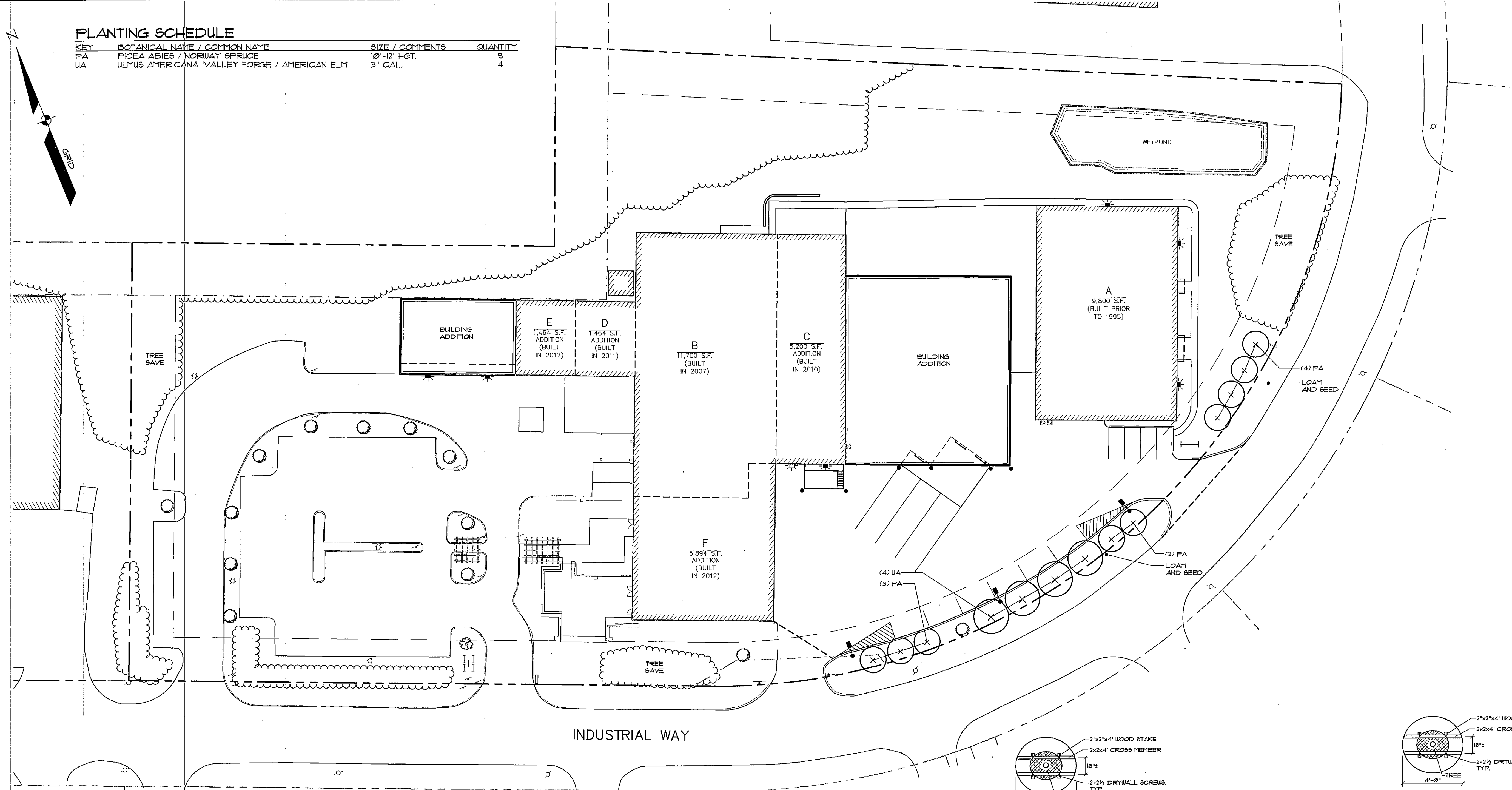
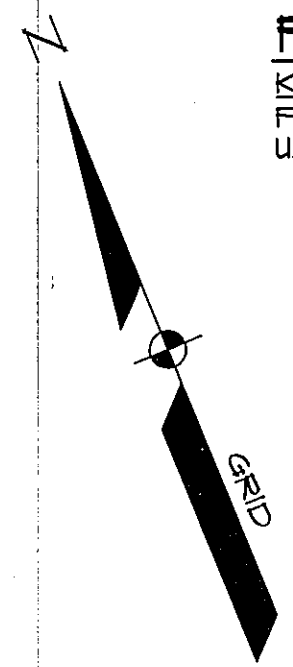


PLANTING SCHEDULE

KEY	BOTANICAL NAME / COMMON NAME	SIZE / COMMENTS	QUANTITY
FA	FICIA ABIES / NORWAY SPRUCE	10'-12' HGT.	3
UA	ULMUS AMERICANA / VALLEY FORGE / AMERICAN ELM	3' CAL.	4



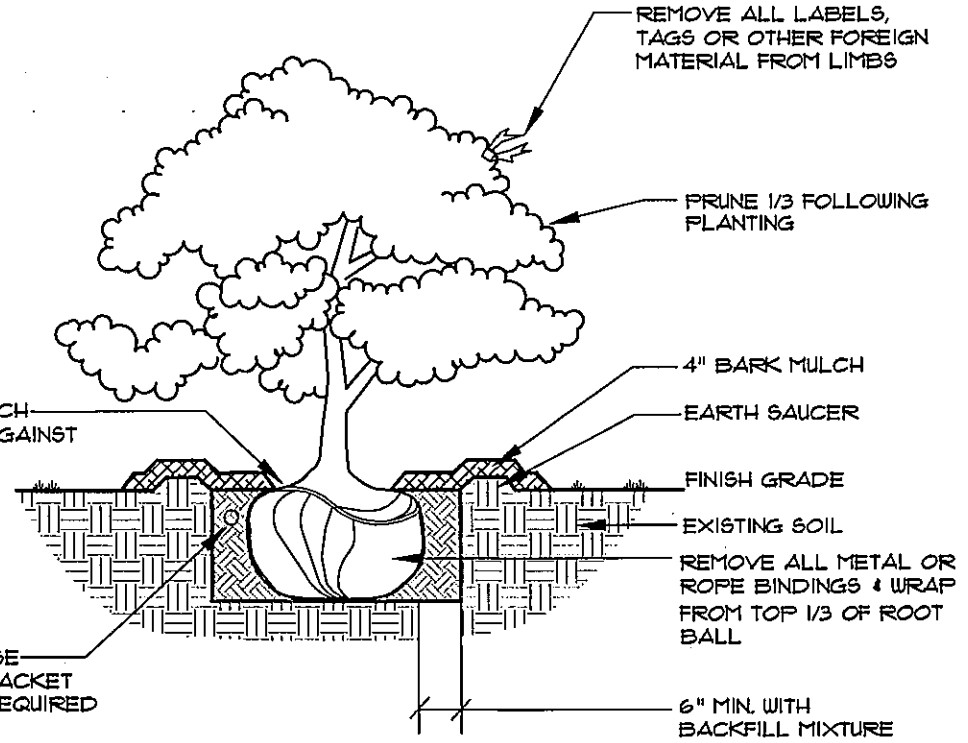
- NOTES:**
- ALL TREE SAVE AREAS MUST BE IDENTIFIED IN THE FIELD PRIOR TO SITE WORK
 - PROTECTIVE MEASURES WILL BE REQUIRED IN TREE SAVE AREAS IN ORDER TO PREVENT THE STORAGE OF MATERIALS AND EQUIPMENT.
 - IN THE CASE THAT TREE SAVE AREAS ARE AFFECTED DURING CONSTRUCTION, ADDITIONAL TREES/SHRUBS MAY BE NEEDED.

LIGHTING LEGEND

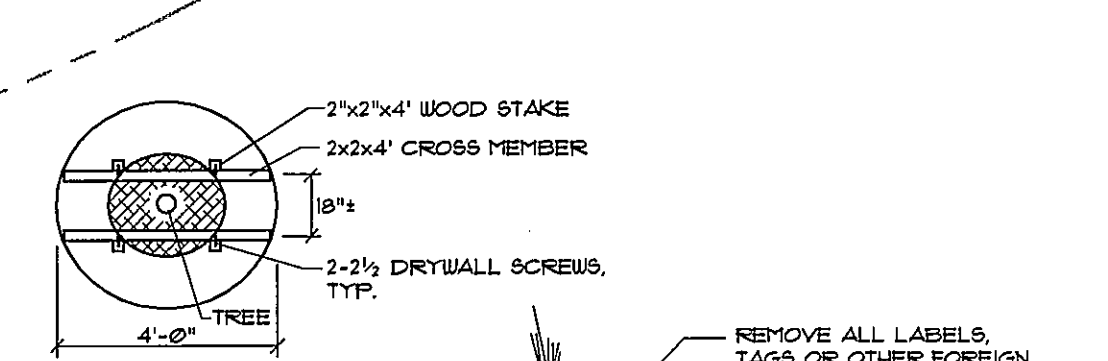
●	KIM LIGHTING - IA/EKG-401-4/200HP3020/DB-F/H8/SQ_POLE
★	RAAB

LEGEND

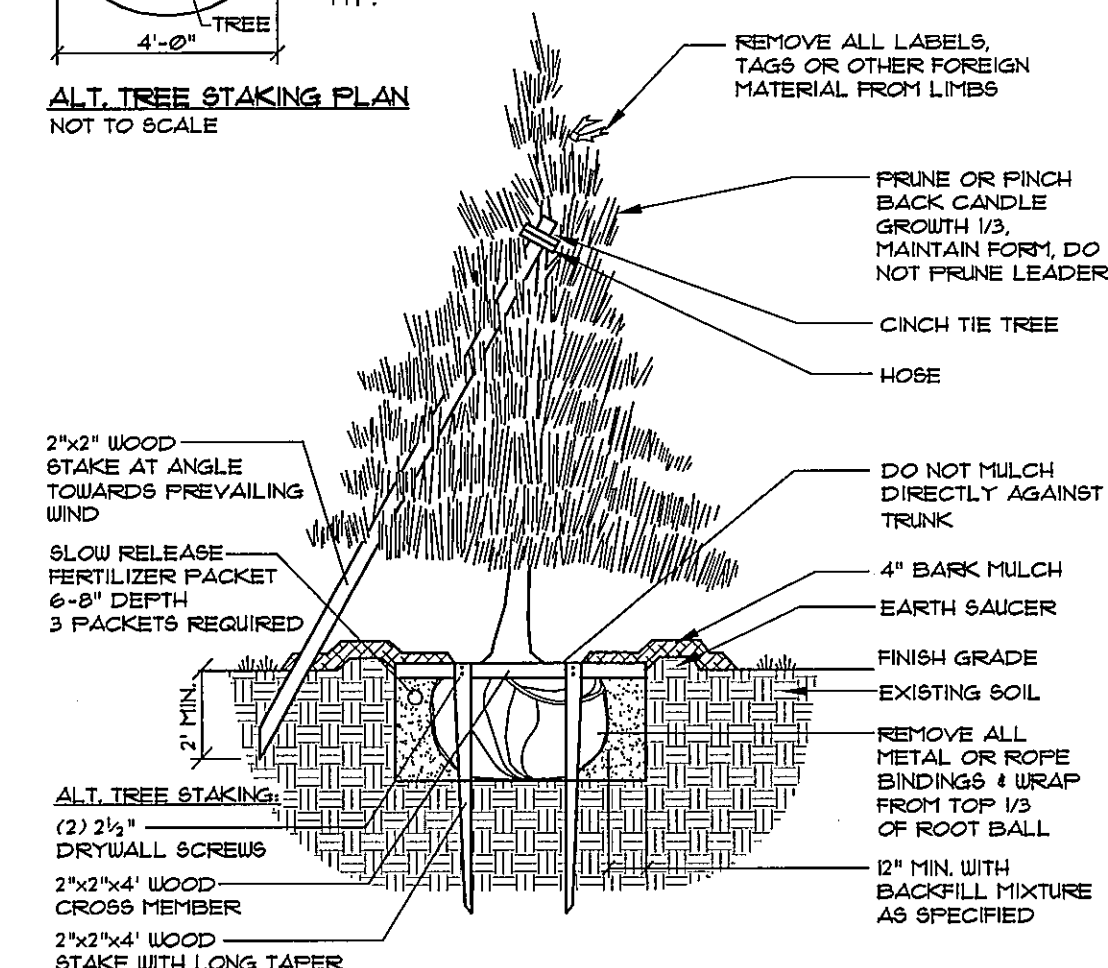
EXISTING	DESCRIPTION	PROPOSED
---	BOUNDARY LINE/ROW	---
---	ABUTTER LINE/ROW	---
---	SETBACK	---
---	EASEMENT	---
---	BUILDING	---
---	SIGN	---
---	EDGE PAVEMENT	---
---	EDGE CONCRETE	---
---	CURBLINE	---
---	TREELINE	---
○	DECIDUOUS TREE	○
⊗	CONIFEROUS TREE	⊗
---	MULCH LINE	---
---	SCREENING FENCE	---
○	BOLLARD	○
○	LIGHT POLE/WALL	○
○	UTILITY POLE	○



DECIDUOUS & EVERGREEN SHRUB
NOT TO SCALE



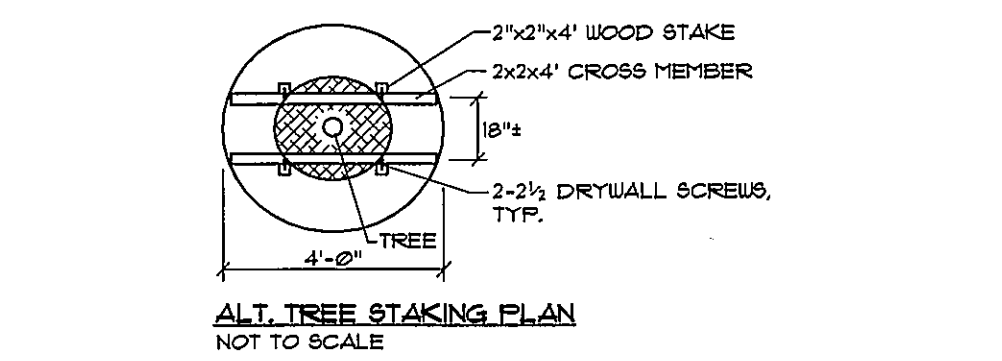
ALT. TREE STAKING PLAN
NOT TO SCALE



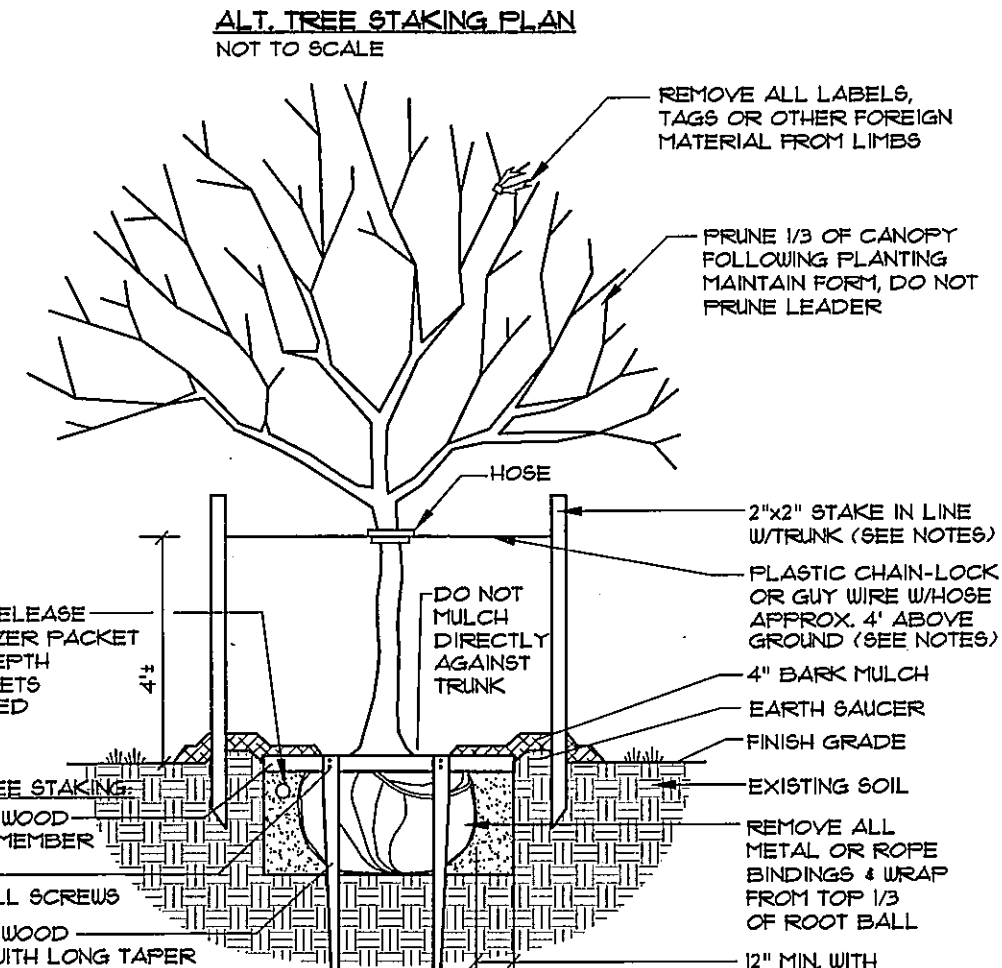
DECIDUOUS TREES UNDER 2\"/>

EVERGREEN TREES 1'-0\"/>

NOT TO SCALE



ALT. TREE STAKING PLAN
NOT TO SCALE



DECIDUOUS TREES 2\"/>

NOT TO SCALE

SEBAGO TECHNICALS
WWW.SEBAGOTECHNICALS.COM
75 John Roberts Rd. - Suite 1A - South Portland, ME 04106
Tel: 207-282-2100 Fax: 207-282-8888

PROJECT NO. 022491 **FIELD BOOK 847** **DESIGN WTC** **CHKD WTC** **DRAWN MAL**

LANDSCAPE AND LIGHTING PLAN - PHASE 1
OF:
ALLAGASH BREWING COMPANY
INDUSTRIAL WAY
PORTLAND, MAINE
FOR:
50 INDUSTRIAL WAY
PORTLAND, MAINE 04103

DATE 05-20-14 **SCALE** 1" = 30'
SHEET C7.1

022491-PHASE 1.dwg TAB: L-PH1

REV.	BY	DATE	STATUS
A	RLM	07-11-14	FINAL SITE PLAN SUBMISSION TO CITY
B	RLM	08-03-14	SITE PLAN SUBMISSION TO CITY