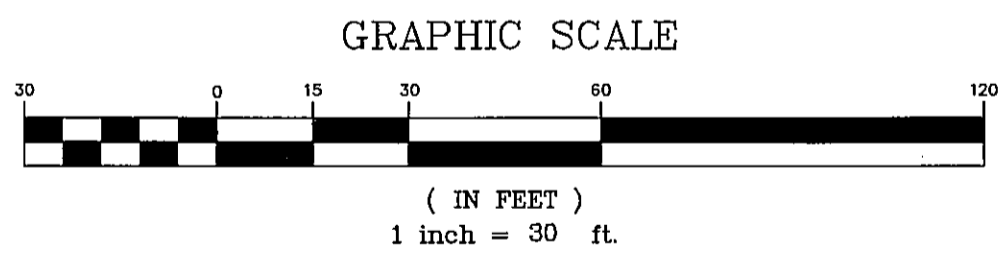
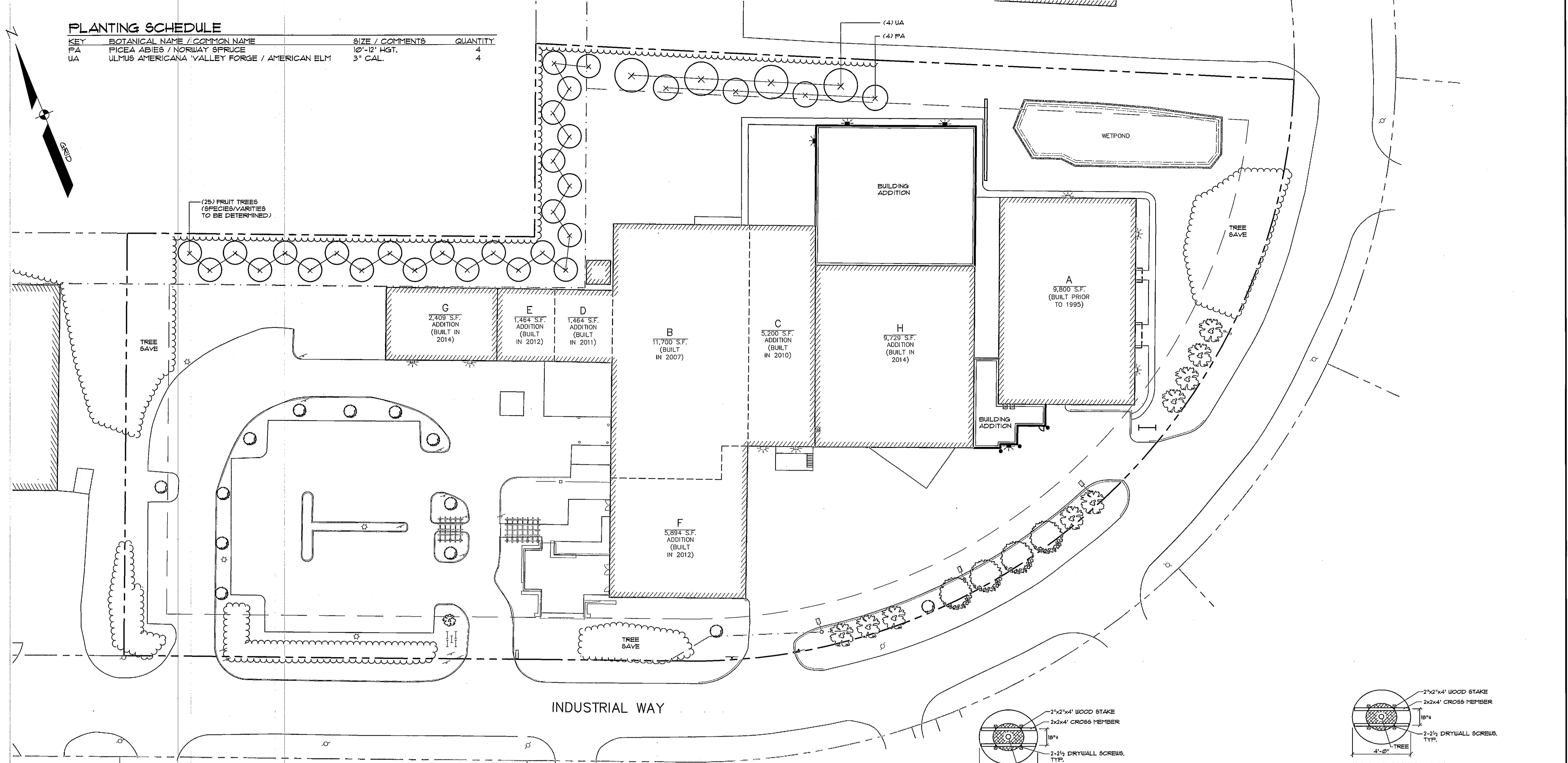
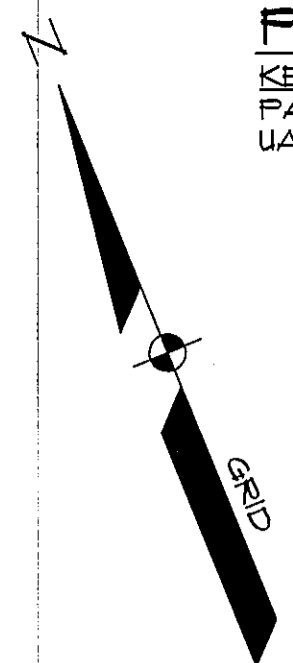


PLANTING SCHEDULE

KEY	BOTANICAL NAME / COMMON NAME	SIZE / COMMENTS	QUANTITY
PA	FICEA ABIES / NORWAY SPRUCE	10'-12' HGT.	4
UA	ULMUS AMERICANA 'VALLEY FORGE' / AMERICAN ELM	3" CAL.	4



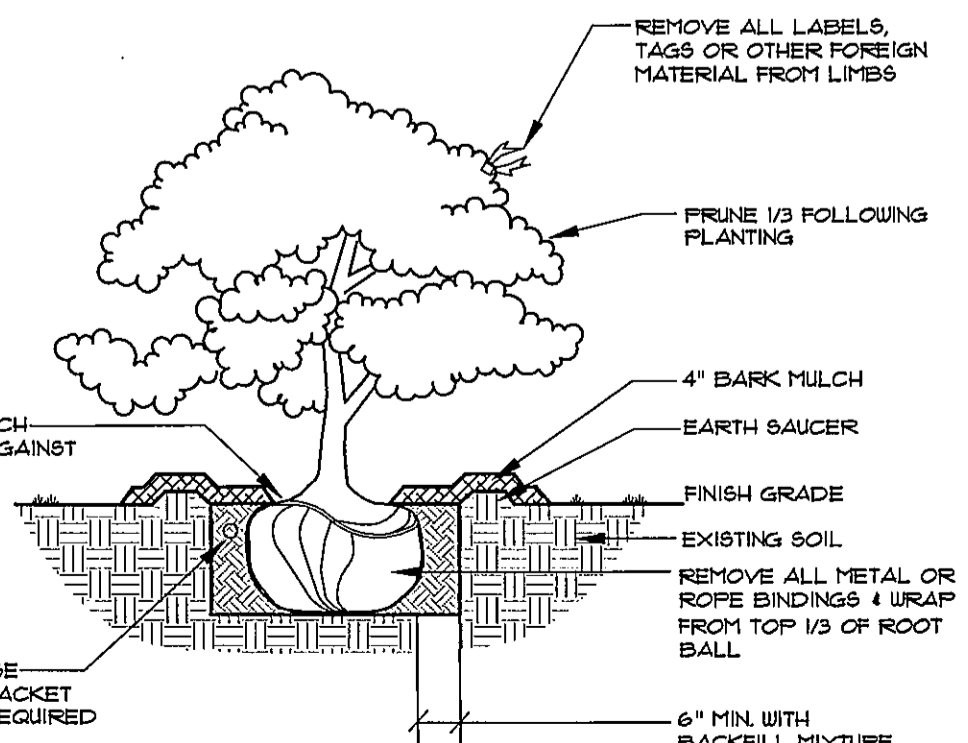
- NOTES:**
- ALL TREE SAVE AREAS MUST BE IDENTIFIED IN THE FIELD PRIOR TO SITE WORK.
 - PROTECTIVE MEASURES WILL BE REQUIRED IN TREE SAVE AREAS IN ORDER TO PREVENT THE STORAGE OF MATERIALS AND EQUIPMENT.
 - IN THE CASE THAT TREE SAVE AREAS ARE AFFECTED DURING CONSTRUCTION, ADDITIONAL TREES/SHRUBS MAY BE NEEDED.

LEGEND

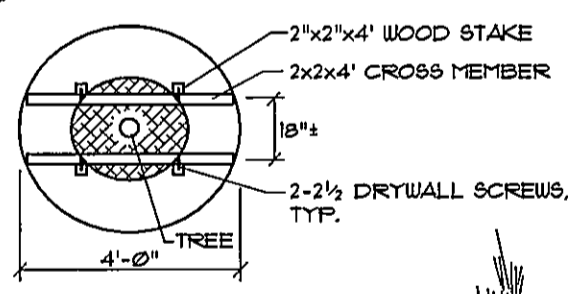
EXISTING	DESCRIPTION	PROPOSED
---	BOUNDARY LINE/ROW	---
---	ABUTTER LINE/ROW	---
---	SETBACK	---
---	EASEMENT	---
---	BUILDING SIGN	---
---	EDGE PAVEMENT	---
---	EDGE CONCRETE	---
---	CURBLINE	---
---	TREELINE	---
○	DECIDUOUS TREE	○
⊗	CONIFEROUS TREE	⊗
---	MULCH LINE	---
---	SCREENING FENCE	---
---	BOLLARD	---
○	LIGHT POLE/WALL	○
○	UTILITY POLE	○

LIGHTING LEGEND

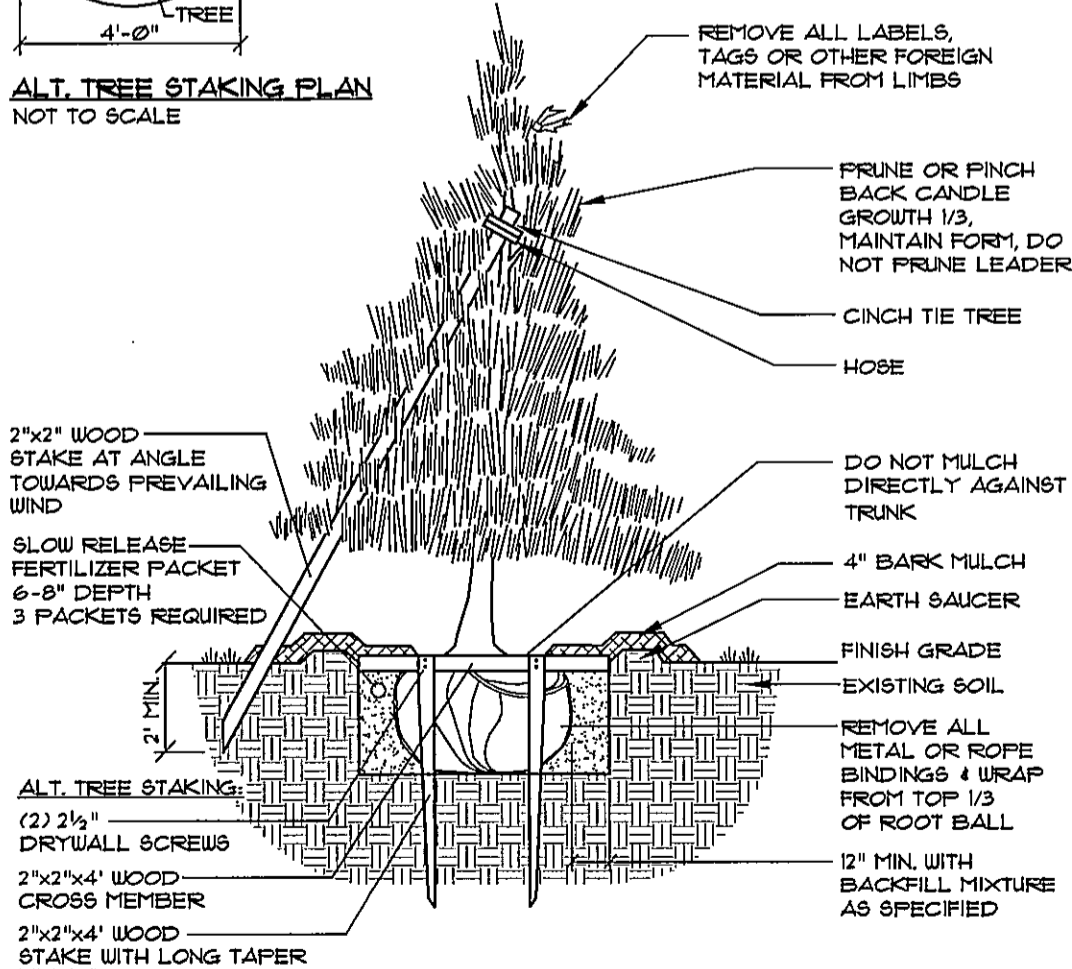
RAAB



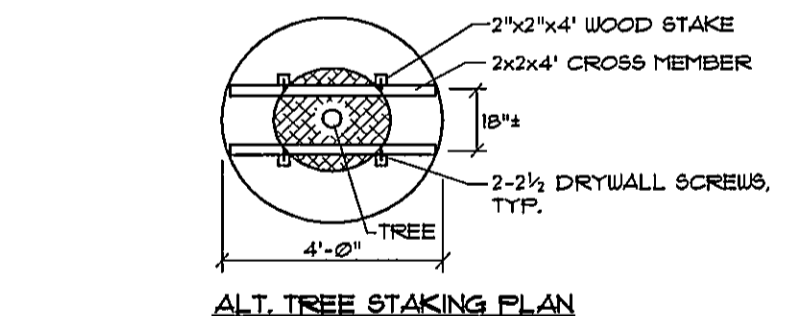
DECIDUOUS & EVERGREEN SHRUB
NOT TO SCALE



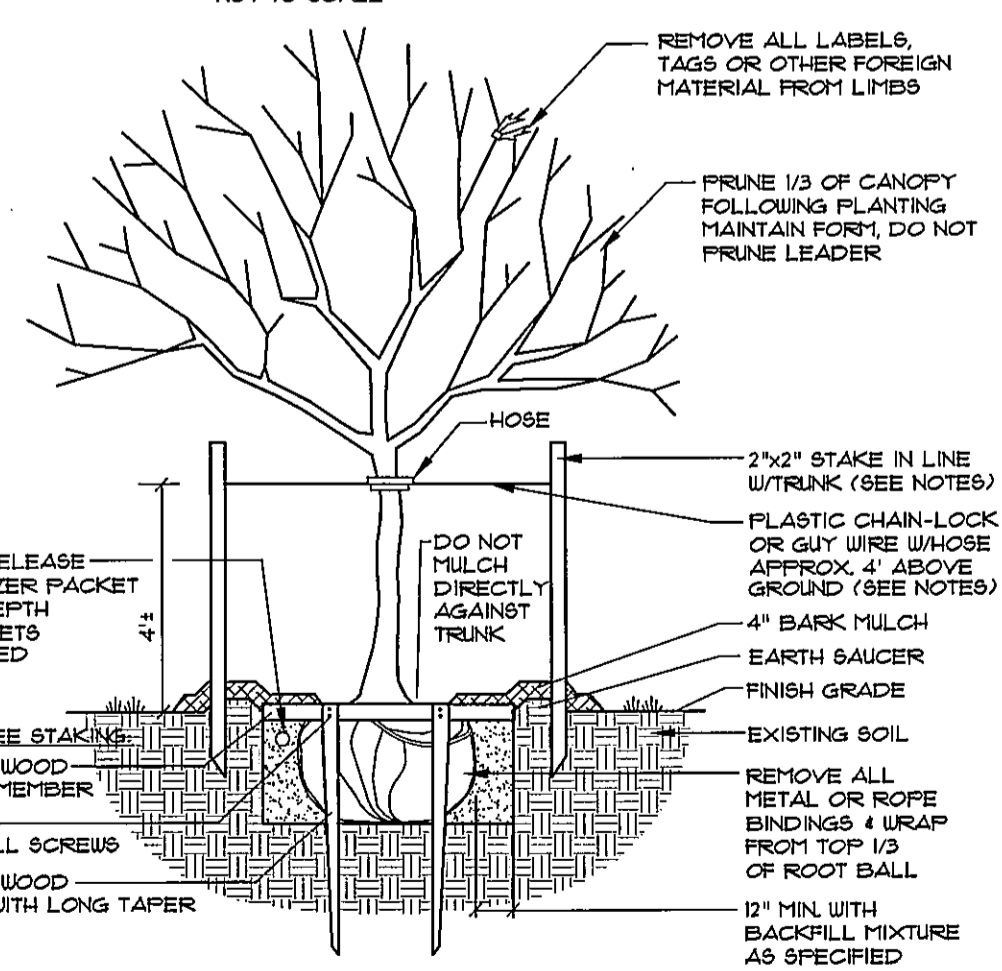
ALT. TREE STAKING PLAN
NOT TO SCALE



DECIDUOUS TREES UNDER 2" CALIFER OR UNDER 8' IN HEIGHT
EVERGREEN TREES 1"-2" IN HEIGHT & UNDER
NOT TO SCALE



ALT. TREE STAKING PLAN
NOT TO SCALE



DECIDUOUS TREES 2" TO 4" CALIFER
NOT TO SCALE

SEBAGO TECHNICALS
75 John Roberts Rd., Suite 1A
Lewiston, ME 04240
Tel: 207-753-5550
Fax: 207-250-0106

LANDSCAPE AND LIGHTING PLAN - PHASE 2
OF:
ALLAGASH BREWING COMPANY
INDUSTRIAL WAY
PORTLAND, MAINE
FOR:
50 INDUSTRIAL WAY, LLC
50 INDUSTRIAL WAY
PORTLAND, MAINE 04103

PROJECT NO: 02249
FIELD BOOK: 847
DESIGN: WTC
CHKD: WTC
DRAWN: MAL
MATERIALS: WTC

DATE: 05-20-14
SCALE: 1" = 30'
SHEET: C7.2

FINAL SITE PLAN SUBMISSION TO CITY: 07-11-14
SITE PLAN SUBMISSION TO CITY: 06-03-14
REV. BY: RLM
DATE: 06-03-14
STATUS: A
THIS PLAN SHALL NOT BE MODIFIED WITHOUT WRITTEN PERMISSION FROM SEBAGO TECHNICALS, INC. ANY ALTERATIONS AUTHORIZED OR OTHERWISE, SHALL BE AT THE USER'S SOLE RISK AND WITHOUT LIABILITY TO SEBAGO TECHNICALS, INC.