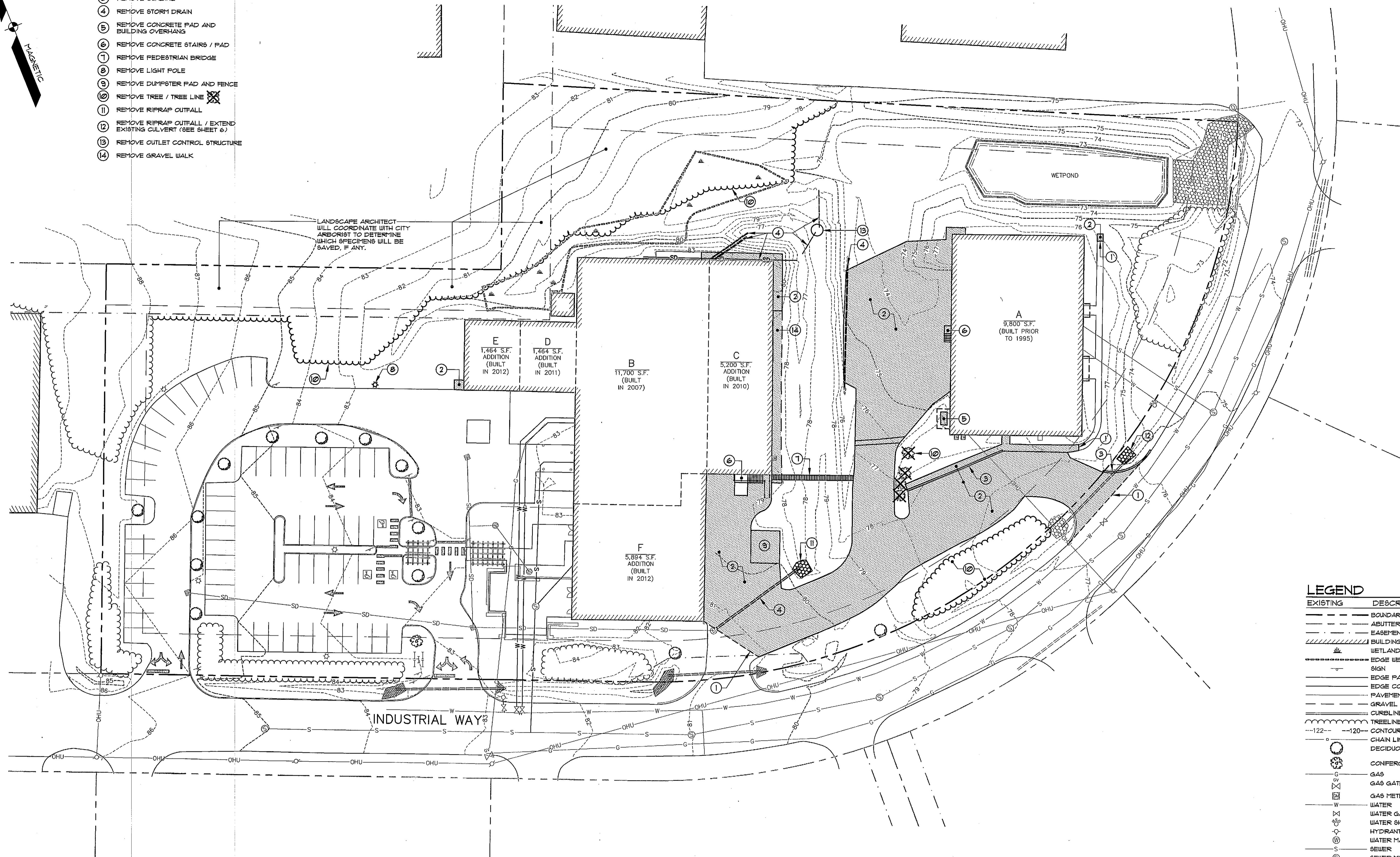


SITE DEMOLITION INDEX

- ① SAW CUT PAVEMENT
- ② REMOVE PAVEMENT / SIDEWALK
- ③ REMOVE CURBING
- ④ REMOVE STORM DRAIN
- ⑤ REMOVE CONCRETE PAD AND BUILDING OVERHANG
- ⑥ REMOVE CONCRETE STAIRS / PAD
- ⑦ REMOVE PEDESTRIAN BRIDGE
- ⑧ REMOVE LIGHT POLE
- ⑨ REMOVE DUMPSTER PAD AND FENCE
- ⑩ REMOVE TREE / TREE LINE
- ⑪ REMOVE RIPRAP OUTFALL
- ⑫ REMOVE RIPRAP OUTFALL / EXISTING EXISTING CULVERT (SEE SHEET 6)
- ⑬ REMOVE OUTLET CONTROL STRUCTURE
- ⑭ REMOVE GRAVEL WALK



LANDSCAPE ARCHITECT WILL COORDINATE WITH CITY ARBORIST TO DETERMINE WHICH SPECIMENS WILL BE SAVED, IF ANY.

INDUSTRIAL WAY

A
9,800 S.F.
(BUILT PRIOR TO 1995)

B
11,700 S.F.
(BUILT IN 2007)

C
5,200 S.F.
(BUILT IN 2010)

D
1,464 S.F.
(BUILT IN 2011)

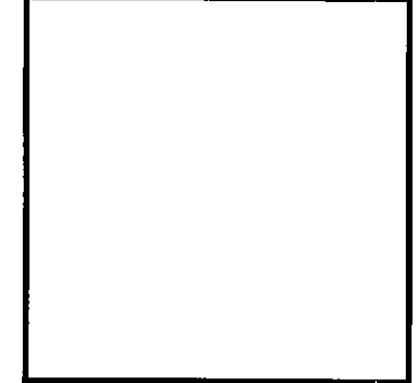
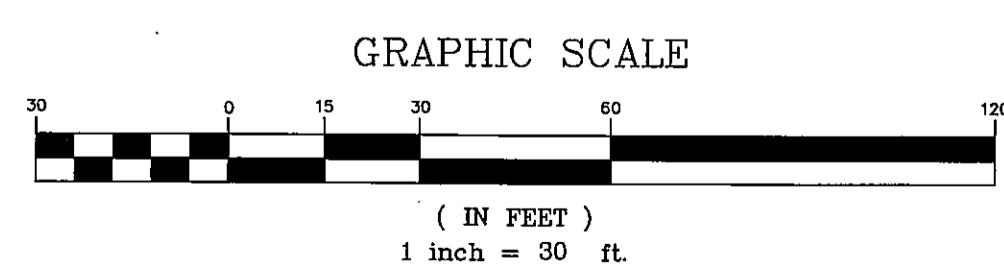
E
1,464 S.F.
(BUILT IN 2012)

F
5,894 S.F.
(BUILT IN 2012)

WETPOND

LEGEND

EXISTING	DESCRIPTION
---	BOUNDARY LINE/ROW
---	ABUTTER LINE/ROW
---	EASEMENT
---	BUILDING
---	WETLANDS
---	EDGE WETLAND SIGN
---	EDGE PAVEMENT
---	EDGE CONCRETE
---	PAVEMENT PAINT
---	GRAVEL ROAD
---	CURBLINE
---	TREELINE
---	CONTOURS
---	CHAIN LINK FENCE
---	DECIDUOUS TREE
---	CONIFEROUS TREE
---	GAS
---	GAS GATE VALVE
---	GAS METER
---	WATER
---	WATER GATE VALVE
---	WATER SHUT OFF
---	HYDRANT
---	WATER MANHOLE
---	SEWER
---	SEWER MH
---	STORM DRAIN
---	UNDERDRAIN
---	CATCH BASIN
---	DRAINAGE MH
---	CULVERT
---	OVERHEAD UTILITY
---	UNDERGROUND UTILITY
---	TRANSFORMER PAD
---	LIGHT POLE/WALL
---	UTILITY POLE
---	GUY
---	RIPRAP



REV:	A	DATE:	05-03-14	STATUS:	SITE PLAN SUBMISSION TO CITY
BY:	RLM				

SEBAGO TECHNICALS
 WWW.SEAGOTECHNICALS.COM
 75 John Roberts Rd., Suite 1A, 250 Gardner Rd., Suite B
 South Portland, ME 04106
 Tel. 207-282-2100

PROJECT NO. 1 FIELD BOOK 02249
 DESIGN RLM
 CHECK RLM
 DRAWN JAR

DEMOLITION PLAN
 OF:
ALLAGASH BREWING COMPANY
 INDUSTRIAL WAY
 PORTLAND, MAINE

FOR:
50 INDUSTRIAL WAY, LLC
 50 INDUSTRIAL WAY
 PORTLAND, MAINE 04103

DATE	SCALE
05-20-14	1" = 30'