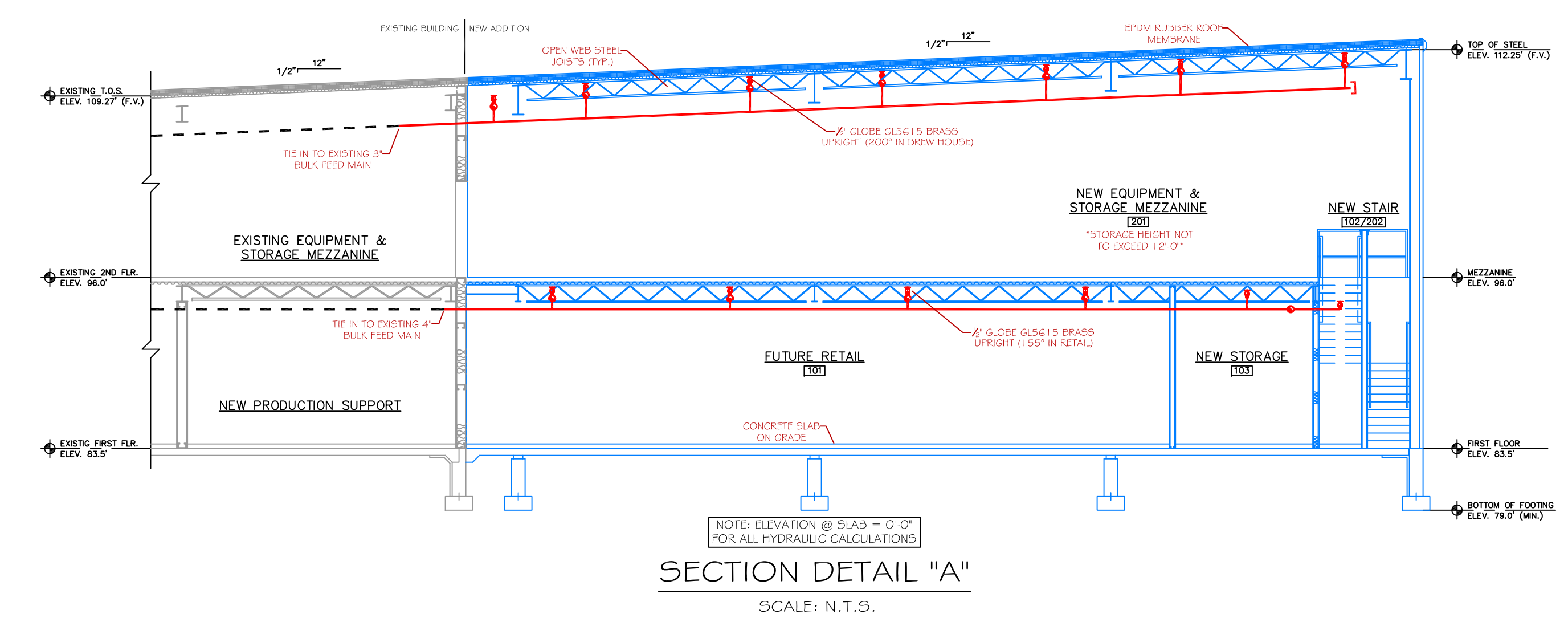
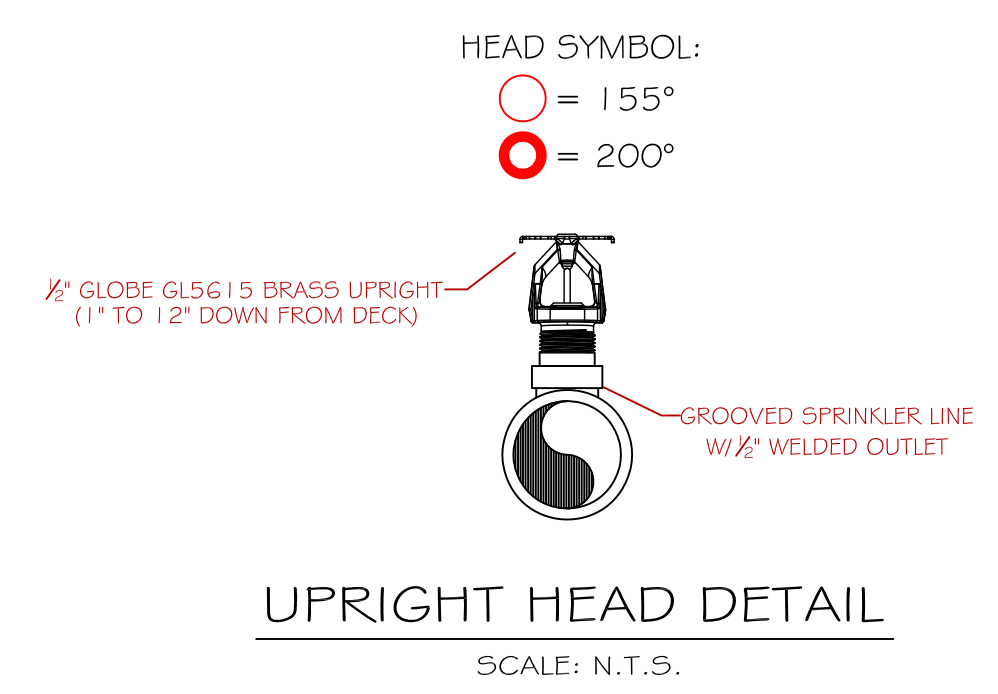


PROJECT DESCRIPTION

BUILDING CONST: THE NEW ADDITION AND EXISTING BUILDING ARE CONSTRUCTED OF TYPE II NON COMBUSTIBLE CONSTRUCTION. THE ADDITION IS TWO LEVELS AND CONTAINS STEEL I-BEAM AND JOIST FRAMING THROUGHOUT. THE ROOF IS CONSTRUCTED WITH OPEN WEB STEEL JOISTS, A METAL ROOF DECK, AND A RUBBER ROOF MEMBRANE. THE SECOND FLOOR IS CONSTRUCTED WITH OPEN WEB STEEL JOISTS COVERED WITH A STEEL DECK AND CONCRETE SLAB. THE EXISTING BUILDING IS OF TYPE II CONSTRUCTION.

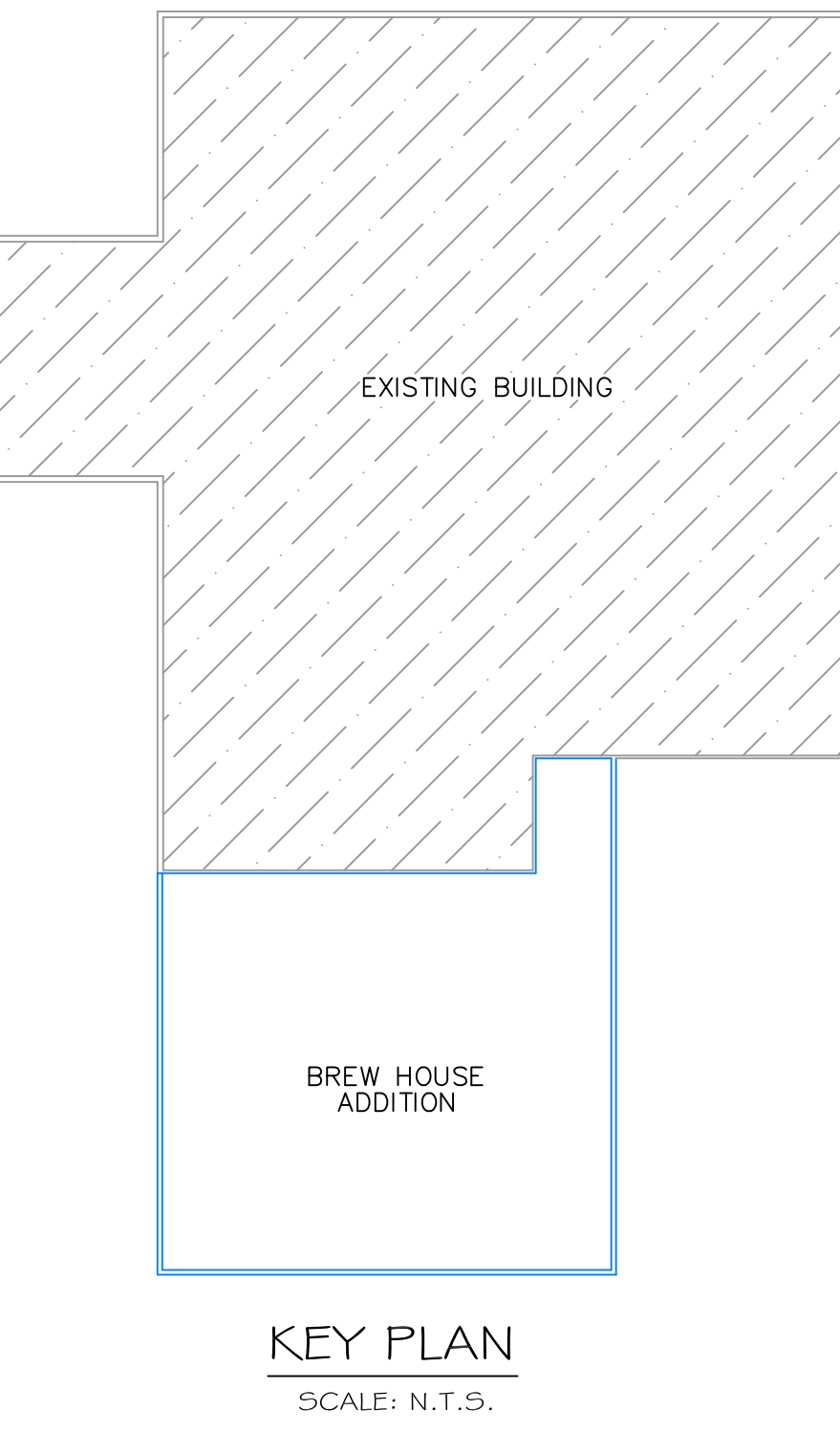
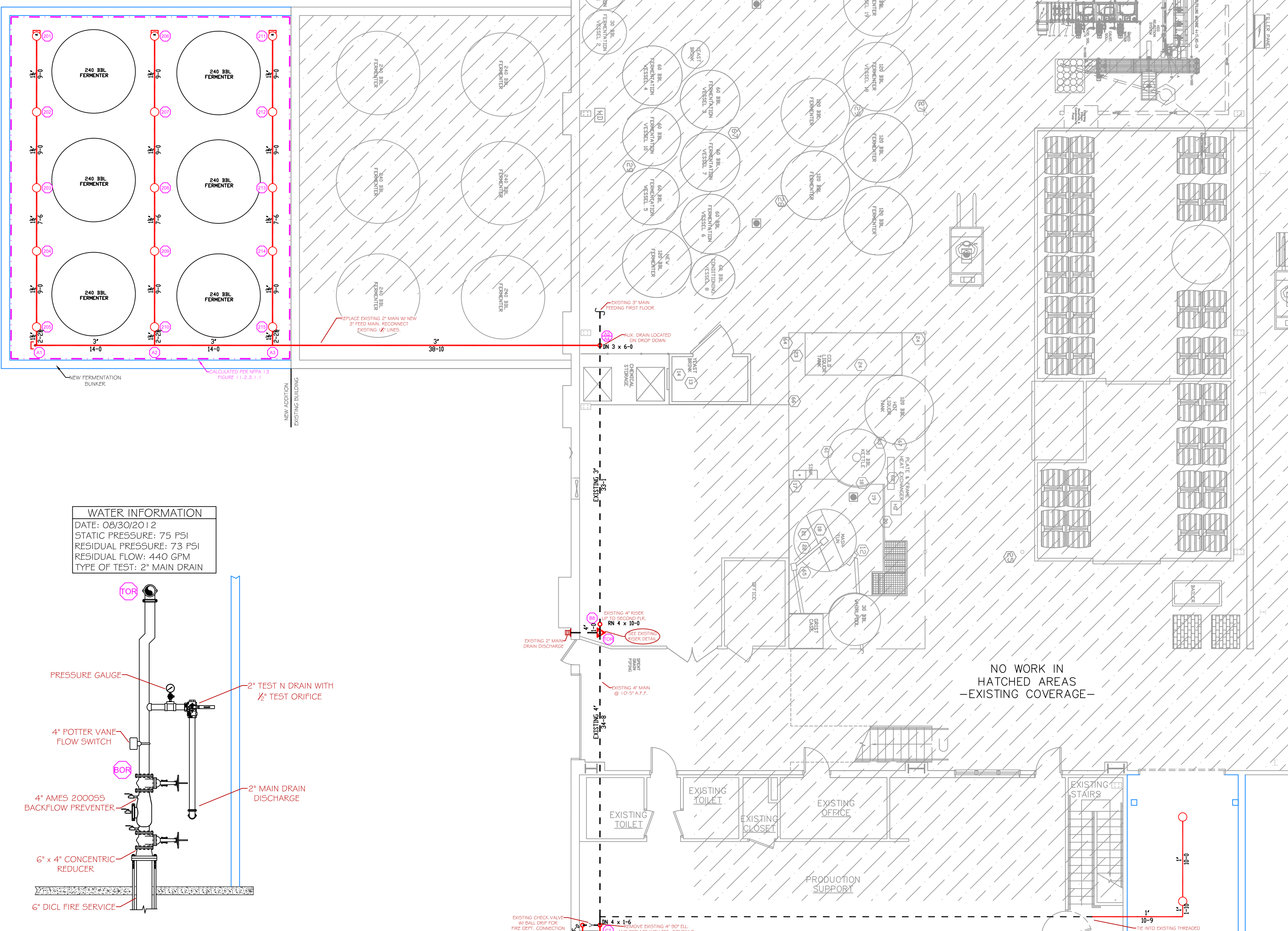
BUILDING OCCUP: THE BUILDING IS USED THROUGHOUT AS A BREWERY. THERE ARE SMALL OFFICE, RETAIL, AND EQUIPMENT AREAS SCATTERED THROUGHOUT.

SPRINKLER DESIGN: THE SPRINKLER SYSTEM HAS BEEN DESIGNED USING AN ORDINARY HAZARD GROUP II CLASSIFICATION THROUGHOUT. THE SCOPE OF NEW SPRINKLER WORK INVOLVES CONNECTING TO THE EXISTING SYSTEM TO FEED THE NEW BUILDING ADDITION AND FERMENTATION BUNKER. THE EXISTING PIPE CONFIGURATION HAS BEEN CONFIRMED ON SITE IN ORDER TO PROVIDE ACCURATE HYDRAULIC CALCULATIONS.
 *THE SPRINKLER SYSTEM HAS BEEN DESIGNED TO MEET ALL APPLICABLE STANDARDS REGARDING AN NFPA 13 2010 ed. SPRINKLER SYSTEM.



FERMENTATION BUNKER CALC STICKER
HYD. DESIGN CRITERIA
 (NFPA 13 2010 ed. - WET)

LOCATION: NEW FERMENTATION BUNKER
 HAZARD CLASSIFICATION: ORDINARY GROUP II
 DENSITY= .2 GPM/SQ.FT.
 AREA OF OPERATION= 1340 SQ. FT.
 HOSE DEMAND= 250 GPM
 NO. OF SPRINKLERS= 15
 SYSTEM DEMAND (INCLUDING HOSE) @
 BASE OF RISER= 657-GPM @ 52-PSI
 SAFETY MARGIN= 15-FSI



RETAIL AREA CALC STICKER
HYD. DESIGN CRITERIA
 (NFPA 13 2010 ed. - WET)

LOCATION: NEW RETAIL SPACE (101)
 HAZARD CLASSIFICATION: ORDINARY GROUP II
 DENSITY= .2 GPM/SQ.FT.
 AREA OF OPERATION= 900 SQ. FT.
 HOSE DEMAND= 250 GPM
 NO. OF SPRINKLERS= 8
 SYSTEM DEMAND (INCLUDING HOSE) @
 BASE OF RISER= 488-GPM @ 57-PSI
 SAFETY MARGIN= 15-FSI

FIRST FLOOR PLAN
 SCALE: 1/8" = 1'-0"
 NEW PROTECTED AREA: 3,371 SQ. FT.

BREW HOUSE CALC STICKER
HYD. DESIGN CRITERIA
 (NFPA 13 2010 ed. - WET)

LOCATION: NEW BREW HOUSE (106)
 HAZARD CLASSIFICATION: ORDINARY GROUP II
 DENSITY= .2 GPM/SQ.FT.
 AREA OF OPERATION= 1500 SQ. FT.
 HOSE DEMAND= 250 GPM
 NO. OF SPRINKLERS= 14
 SYSTEM DEMAND (INCLUDING HOSE) @
 BASE OF RISER= 626-GPM @ 57-PSI
 SAFETY MARGIN= 14-FSI

