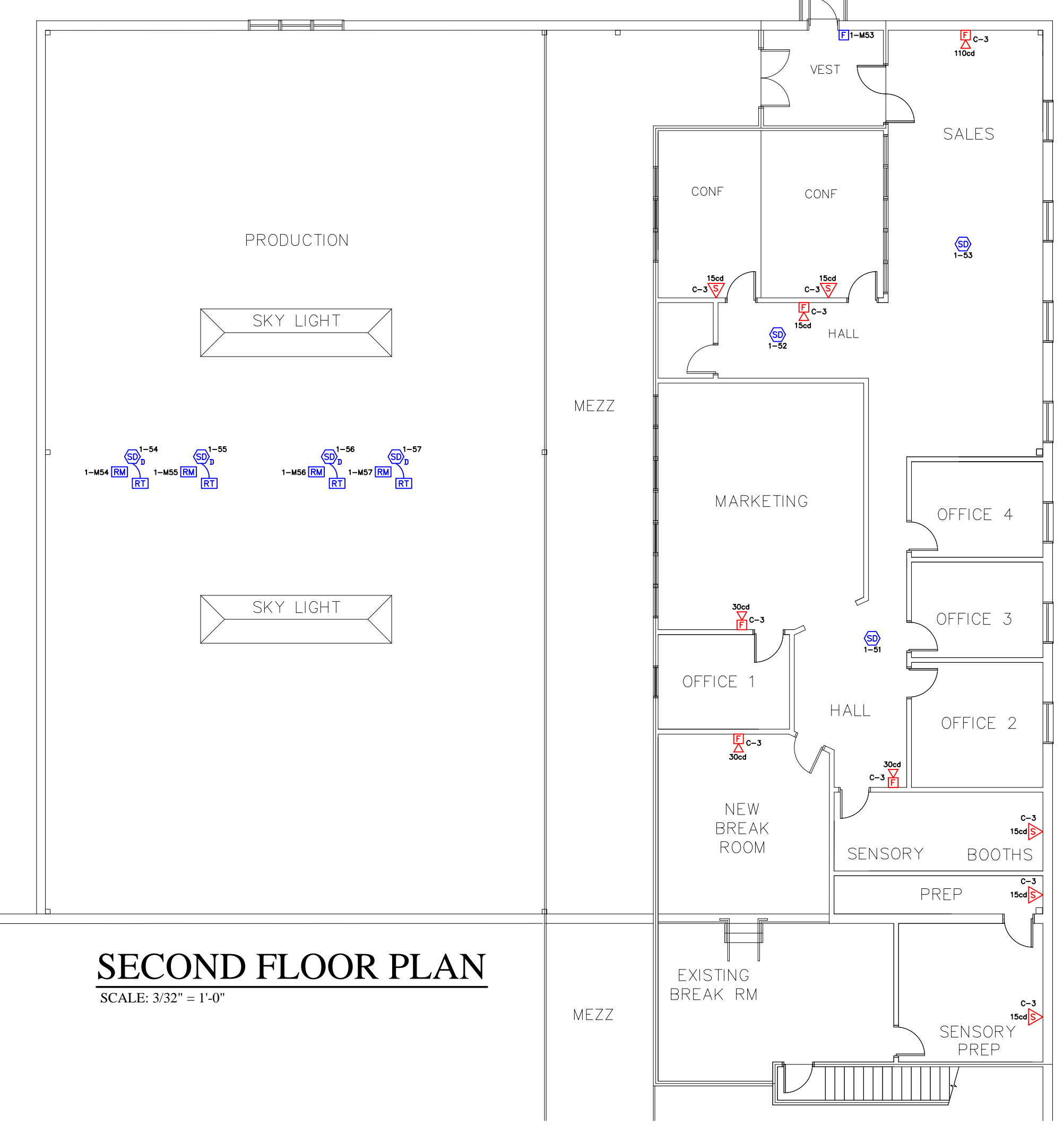
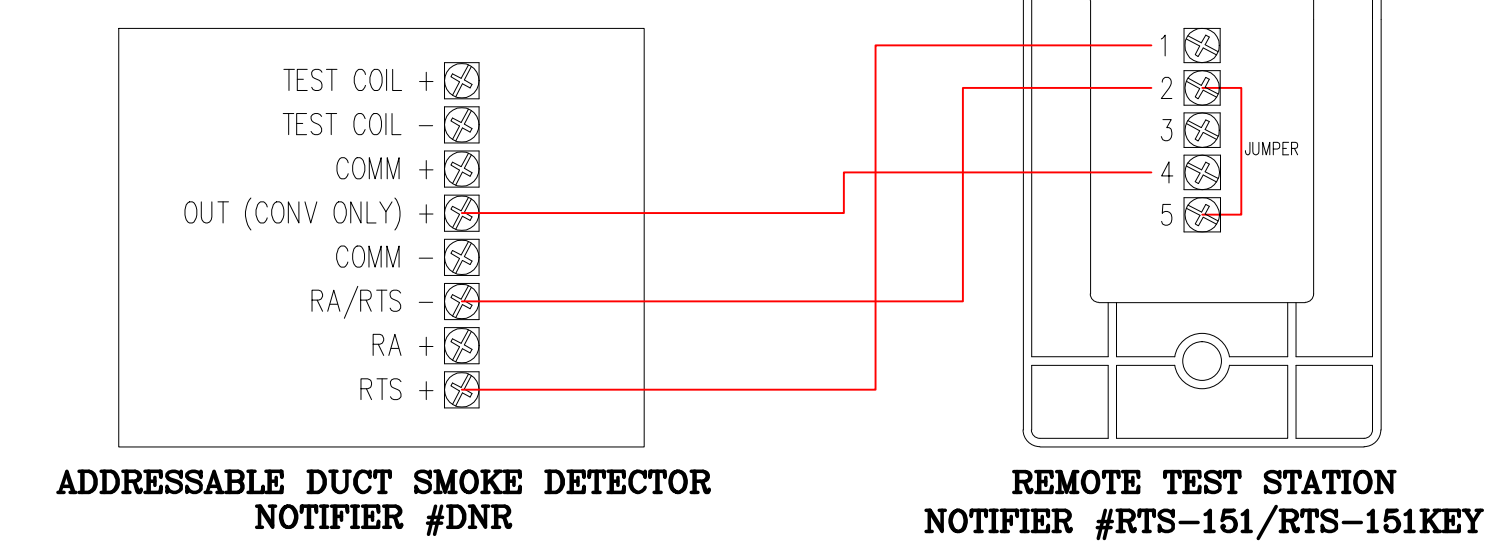


FIRST FLOOR PLAN
SCALE: 3/32" = 1'-0"



SECOND FLOOR PLAN
SCALE: 3/32" = 1'-0"



INTERCONNECTION WIRING DIAGRAM FOR DNR ADDRESSABLE DUCT SMOKE DETECTOR WITH RTS-151/RTS-151KEY REMOTE TEST STATION

CLASS A WIRING PER NFPA 72 2010 EDITION:

23.4.2.2.2 ALL STYLES OF CLASS A AND CLASS X CIRCUITS USING PHYSICAL CONDUCTORS (E.G., METALLIC, OPTICAL FIBER) SHALL BE INSTALLED SUCH THAT THE OUTGOING AND RETURN CONDUCTORS, EXITING FROM AND RETURNING TO THE CONTROL UNIT, RESPECTIVELY, ARE ROUTED SEPARATELY. THE OUTGOING AND RETURN (REDUNDANT) CIRCUIT CONDUCTORS SHALL NOT BE RUN IN THE SAME CABLE ASSEMBLY (I.E., MULTI-CONDUCTOR CABLE), ENCLOSURE, OR RACEWAY ONLY UNDER THE FOLLOWING CONDITIONS:

(1) FOR A DISTANCE NOT TO EXCEED 3 M (10 FT) WHERE THE OUTGOING AND RETURN CONDUCTORS ENTER OR EXIT THE INITIATING DEVICE, NOTIFICATION APPLIANCE, OR CONTROL UNIT ENCLOSURES

(2) SINGLE CONDUIT/RACEWAY DROPS TO INDIVIDUAL DEVICES OR APPLIANCES

(3) SINGLE CONDUIT/RACEWAY DROPS TO MULTIPLE DEVICES OR APPLIANCES INSTALLED WITHIN A SINGLE ROOM NOT EXCEEDING 92.9 M² (1000 FT²) IN AREA.

A.23.4.2.2 A GOAL OF 23.4.2.2 IS TO PROVIDE ADEQUATE SEPARATION BETWEEN THE OUTGOING AND RETURN CABLES. THIS SEPARATION IS REQUIRED TO HELP ENSURE PROTECTION OF THE CABLES FROM PHYSICAL DAMAGE. THE RECOMMENDED MINIMUM SEPARATION TO PREVENT PHYSICAL DAMAGE IS 12 IN. (300MM) WHERE THE CABLE IS INSTALLED VERTICALLY AND 48 IN. (1.22M) WHERE THE CABLE IS INSTALLED HORIZONTALLY.

- FIRE ALARM NOTES:**
- 24VDC STROBE AND HORN/STROBE CIRCUITS ARE INDICATED ON RISER DIAGRAM AND SYSTEM DESIGN DRAWINGS BY SUB-SCRIPT C-1, 2, 3, ETC.; PLEASE ENSURE THAT CIRCUITS ARE INSTALLED PER THESE DIRECTIONS. REFER TO RISER AND SYSTEM LAYOUT DRAWINGS FOR LOCATION OF DEVICES.
 - THE SIGNAL CIRCUITS ARE TO BE WIRED AND INSTALLED WITH NO DEVIATION TO THE FIRE ALARM SYSTEM RISER DIAGRAM AND LAYOUT DRAWINGS DUE TO CIRCUIT AMPERAGE RESTRICTIONS WITHOUT FIRST DISCUSSING WITH AND OBTAINING APPROVAL FROM BK SYSTEMS, INC.
 - THE LOCATIONS OF INTERIOR AND EXTERIOR AUDIO/VISUAL DEVICES SHOWN ON THE DRAWINGS HAVE BEEN LOCATED IN ACCORDANCE WITH NFPA 72. UNDER NO CIRCUMSTANCES SHALL THE ELECTRICAL CONTRACTOR CHANGE THE LOCATIONS OF ANY OF THESE DEVICES WITHOUT FIRST DISCUSSING WITH AND OBTAINING APPROVAL FROM BK SYSTEMS, INC. IF THE ELECTRICAL CONTRACTOR INSTALLS ANY OF THESE DEVICES IN LOCATIONS OTHER THAN AS SHOWN ON THE CONTRACT DOCUMENTS, THE ELECTRICAL CONTRACTOR WILL BE RESPONSIBLE FOR ALL COSTS ASSOCIATED WITH RELOCATING, PATCHING AND PAINTING WHERE DEVICES HAD BEEN IMPROPERLY INSTALLED.
 - THE END-OF-LINE DEVICES MUST BE LOCATED IN A COMMON AREA ONLY.
 - NO "T" TAPPING ALLOWED ON ANY CIRCUITS.
 - NO WIRING OR CONDUITS TO ENTER OR EXIT FROM TOP LEFT CORNER OF THE FIRE ALARM CONTROL PANEL DUE TO LOCATIONS OF POWER SUPPLIES. NO WIRING OR CONDUITS TO ENTER OR EXIT THROUGH THE BOTTOM OF THE FIRE ALARM CONTROL PANEL EXCEPT FOR BATTERY BOX CONNECTIONS. ALL CONDUITS THAT ENTER THE CONTROL PANEL SHALL BE NO LARGER THAN ONE (1) INCH.
 - ALL SMOKE AND HEAT DETECTORS SHALL BE LOCATED A MINIMUM OF 3'-0" AWAY FROM ALL SUPPLY AIR DIFFUSERS.

ANTICIPATED AMBIENT SOUND LEVELS	
BUSINESS OCCUPANCY	55DB
EDUCATIONAL OCCUPANCY	45DB
INSTITUTIONAL OCCUPANCY	50DB
MECHANICAL ROOMS	85DB
ASSEMBLY OCCUPANCY	55DB
RESIDENTIAL OCCUPANCY	35DB

FIRE ALARM LEGEND

- FACP** EXISTING FIRE ALARM CONTROL PANEL (FIRE WARDEN #NFW2-100R)
- FSPS** FIRE CONTROL POWER SUPPLY WITH BATTERY BACKUP (HONEYWELL #HPFFB)
- F** ADDRESSABLE DUAL ACTION MANUAL PULL STATION (FIRE WARDEN #NOT-BG12LX)
- SD** ADDRESSABLE SMOKE DETECTOR (FIRE WARDEN #NP-100 W/ #B210LP BASE)
- SD** ADDRESSABLE DUCT SMOKE DETECTOR (NOTIFIER #DNR WITH NP-100R AND #ST-3 SAMPLING TUBE)
- MM** ADDRESSABLE MINI MONITOR MODULE (FIRE WARDEN #NMM-100P)
- RM** ADDRESSABLE RELAY MODULE (FIRE WARDEN #NC-100R)
- RT** REMOTE TEST STATION (NOTIFIER #RTS151)
- EA** 24VDC SYNCHRONIZED MULTI-CANDELA HORN/STROBE (SYSTEM SENSOR #P2R)
- EA** 24VDC SYNCHRONIZED MULTI-CANDELA STROBE (SYSTEM SENSOR #SR)

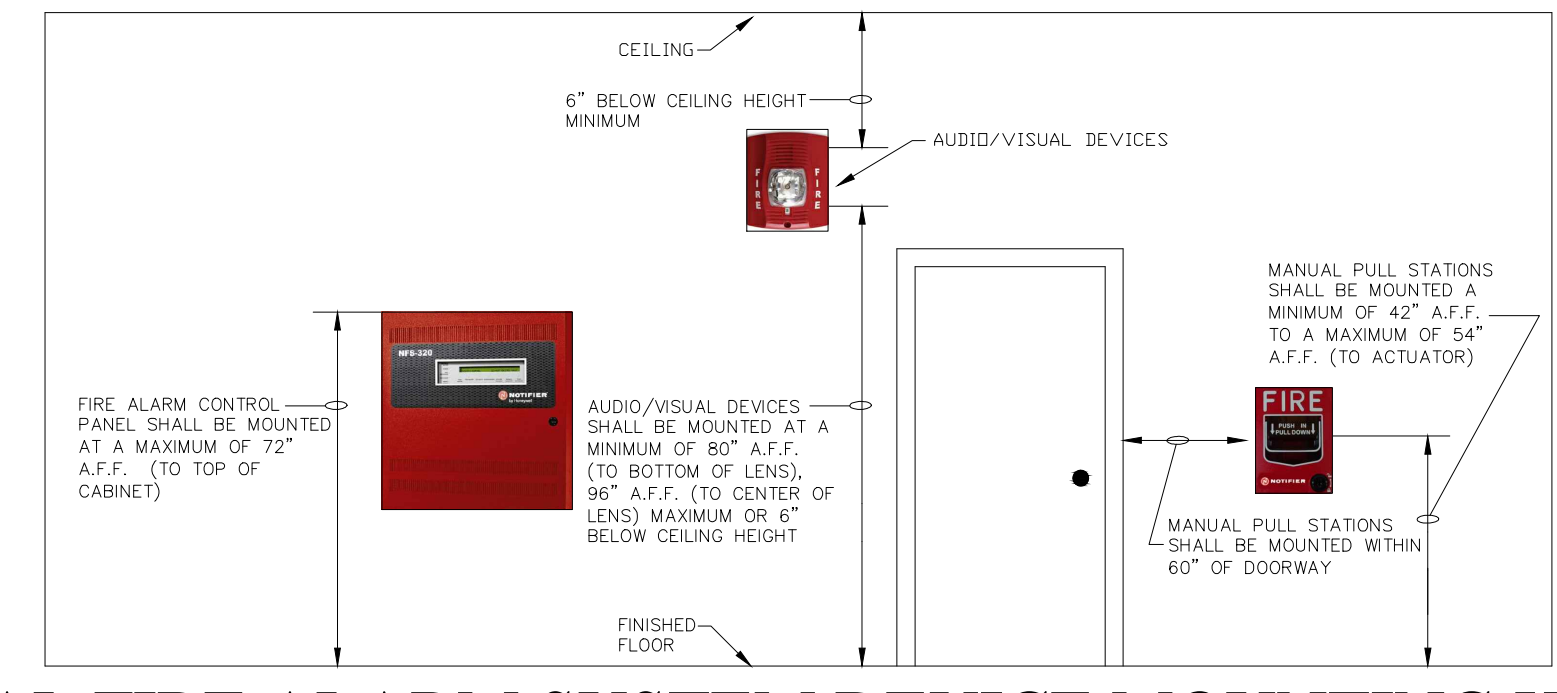
NOTE: SET CANDELA RATING OF ALL HORN/STROBES AND STROBES AS SHOWN ON SYSTEM DESIGN DRAWINGS.

--- TICKS DENOTES NUMBER OF #14 FPLR FIRE ALARM RATED CONDUCTORS

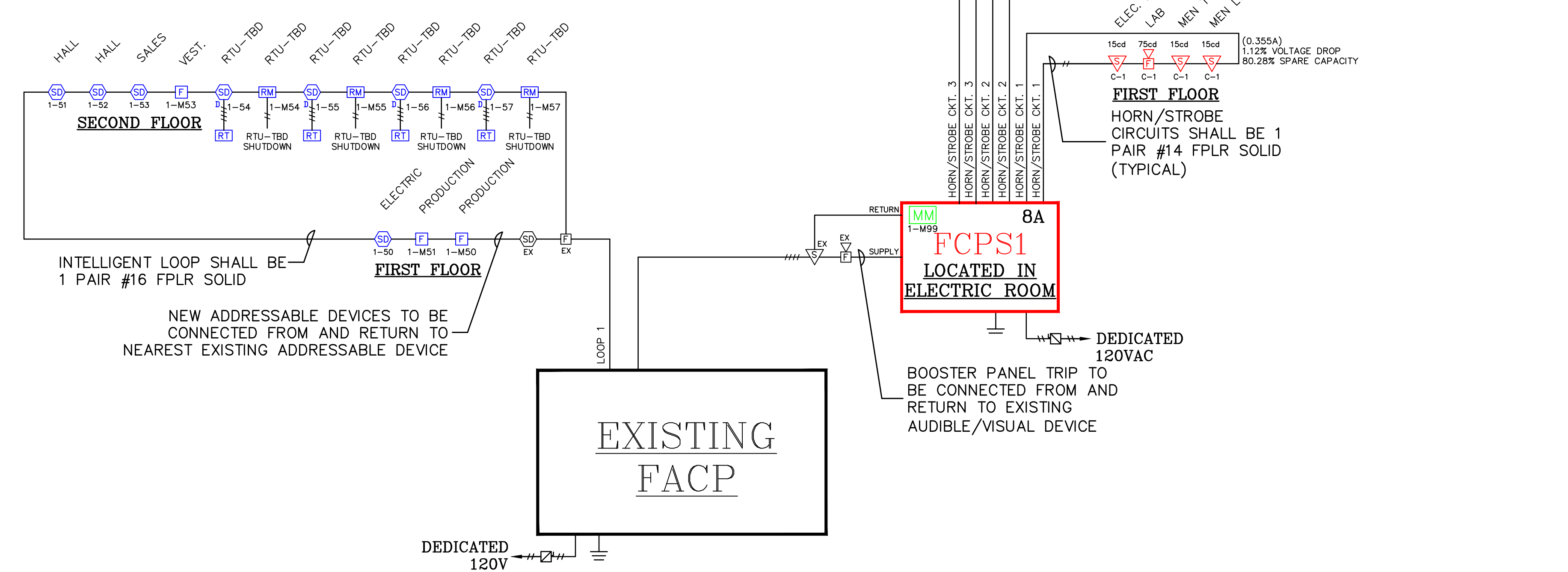
NOTE: THE SPECIFIED FIRE ALARM SYSTEM AND PERIPHERAL DEVICES SHALL BE NOTIFIER AS FURNISHED BY:
BK SYSTEMS, INC.
4 COTE AVENUE
GOFFSTOWN, NH 03045
TELEPHONE: 603-647-8775
FAX: 603-647-4806
EMAIL: DEREKS@BKSYSTEMSINC.COM

FD APPROVAL STAMP

ENGINEER STAMP



TYPICAL FIRE ALARM SYSTEM DEVICE MOUNTING HEIGHTS



FIRE ALARM SYSTEM RISER DIAGRAM

This drawing and the information and design application herein contained is the property of BK Systems, Inc.; all information herein contained shall be treated as proprietary and confidential; no reproduction of this drawing or part thereof shall be made without the written consent of BK Systems, Inc.

BK SYSTEMS
"BUILDING SYSTEMS SPECIALISTS"
BK SYSTEMS, INC.
4 COTE AVENUE - GOFFSTOWN, NH 03045
TEL: (603) 647-8775 / FAX: (603) 647-4806
www.bksystemsinc.com

REVISIONS	DATE

Project No.: 14-103
Date: 08/14/14
Scale: AS NOTED
Drawn By: D.SMALL
Checked By: N.WEBSTER
Approved By: K.KLARDIE

ALLAGASH BREWING ADDITION
PORTLAND, ME
FIRE ALARM RISER DIAGRAM, FIRE ALARM FLOOR PLANS
PREPARED FOR:
TRT ELECTRIC
65 WASHINGTON STREET
AUGUSTA, ME 04101