

FIRE SPRINKLER PLAN - FIRST LEVEL PLAN

- TYCO MODEL "DS-1" (Symbol: 200/2)
 - TYCO MODEL "TY-FRB" (Symbol: 200/6)
 - TYCO MODEL "TY-B" (Symbol: 200/39)
 - TYCO MODEL "TY-B" (Symbol: 200/4)
- WHITE RECESSED DRY PENDENT K-FACTOR= 5.6 SIN# TY3255 SYMBOL= (ON DROP)
- WHITE RECESSED PENDENT K-FACTOR= 5.6 SIN# TY323 SYMBOL= (Symbol)
- BRASS UPRIGHT K-FACTOR= 5.6 SIN# TY3151 SYMBOLS: ON LINE= (Symbol) ON SPRIG= (Symbol)
- BRASS HORIZONTAL SIDEWALL K-FACTOR= 5.6 SIN# TY3351 SYMBOL= (Symbol)

SCALE: 1/8"=1'
 AREA PROTECTED: 5,616 SQ.FT.
 FINISH FLOOR ELEVATION : 83.5'
 COLOR CODE: WHITE

NOTE (A): EXISTING SPRINKLER HEADS AND LINES TO BE REWORKED TO MEET NEW WALL LAYOUT.

NOTE: AREA PROTECTED AND HEAD COUNT FOR ADDITION AND RENOVATED AREA ONLY TO LIMIT OF WORK LINE.

HYDRAULIC-SYSTEM
 THIS BUILDING IS PROTECTED BY A HYDRAULICALLY DESIGNED AUTOMATIC SPRINKLER SYSTEM.

AREA #2
 LOCATION: PRODUCTION AREA

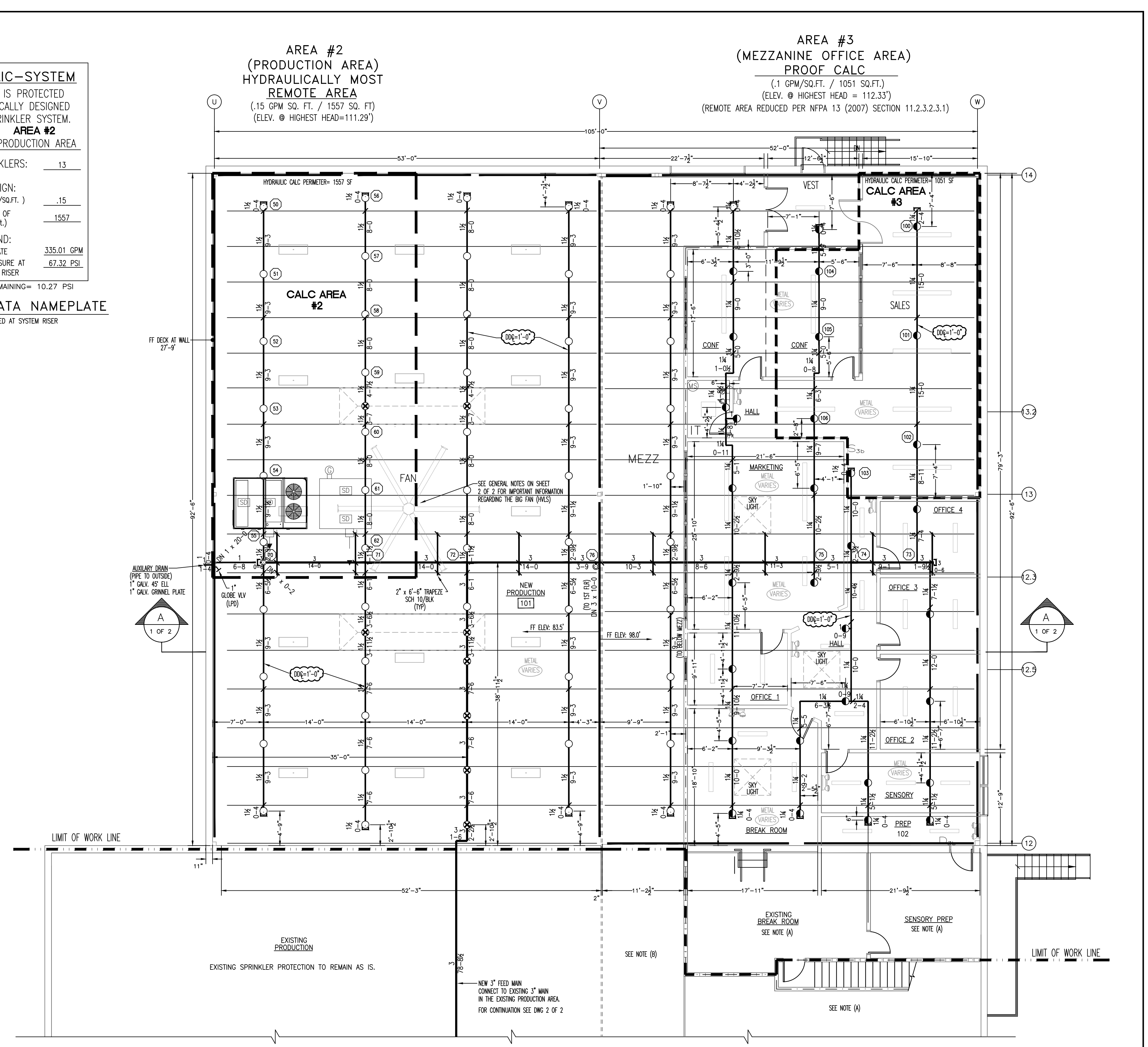
No. OF SPRINKLERS: 13 (CALCULATED)

BASIS OF DESIGN:
 1. DENSITY (GPM/SQ.FT.) : .15
 2. DESIGNED AREA OF DISCHARGE (SQ.FT.) : 1562

SYSTEM DEMAND:
 1. WATER FLOW RATE : 335.01 GPM
 2. RESIDUAL PRESSURE AT THE BASE OF THE RISER : 67.32 PSI

PRESSURE REMAINING= 10.27 PSI

HYDRAULIC DATA NAMEPLATE
 TO BE MOUNTED AT SYSTEM RISER



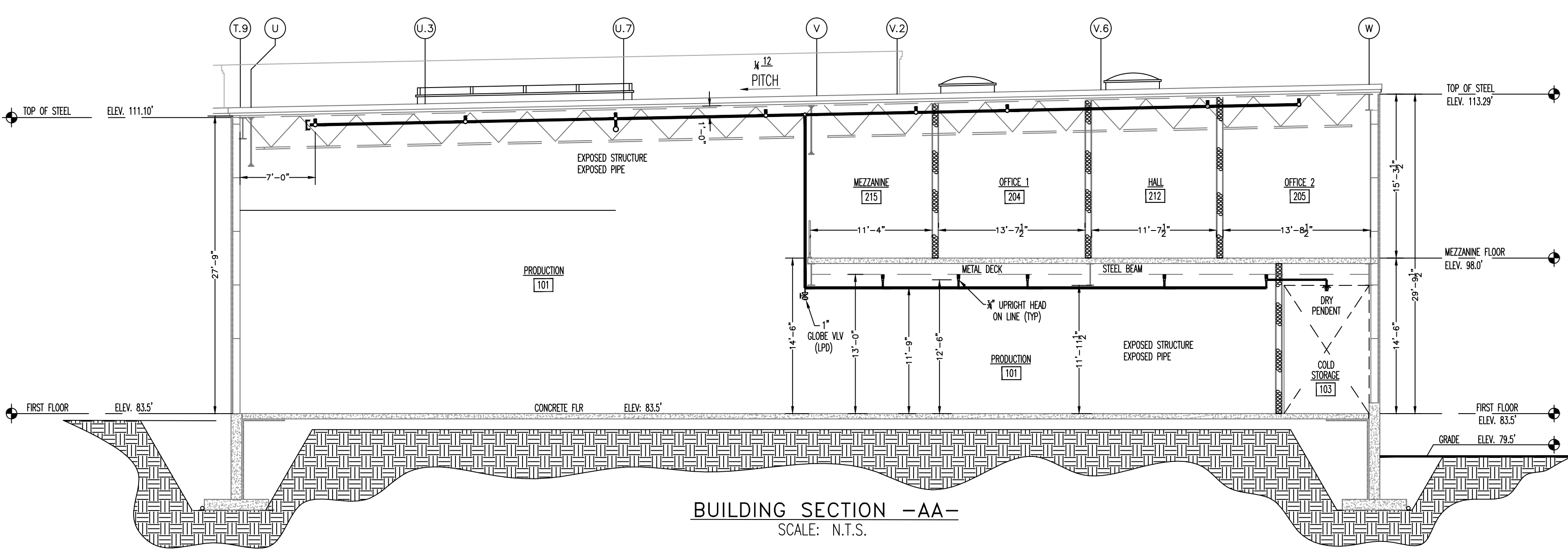
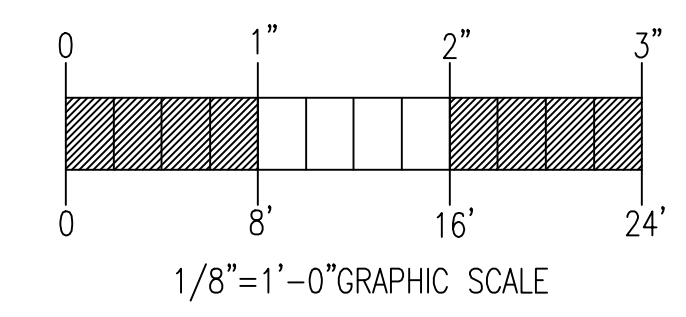
FIRE SPRINKLER PLAN - MEZZANINE/ROOF DECK FLOOR PLAN

- TYCO MODEL "TY-FRB" (Symbol: 200/31)
 - TYCO MODEL "TY-B" (Symbol: 200/59)
- BRASS UPRIGHT K-FACTOR= 5.6 SIN# TY313 SYMBOL= (Symbol) (ON LINE)
- BRASS UPRIGHT K-FACTOR= 5.6 SIN# TY3151 SYMBOLS: ON LINE= (Symbol) ON SPRIG= (Symbol)

SCALE: 1/8"=1'
 AREA PROTECTED: 9,766 SQ.FT.
 FINISH FLOOR ELEVATION : 98.0'
 COLOR CODE: WHITE

NOTE (A): EXISTING SPRINKLER HEADS AND LINES TO BE REWORKED TO MEET NEW WALL LAYOUT.

NOTE: AREA PROTECTED AND HEAD COUNT FOR ADDITION AND RENOVATED AREA ONLY TO LIMIT OF WORK LINE.



BUILDING SECTION - AA-
 SCALE: N.T.S.

GENERAL NOTES	DATE	REVISIONS	REQUIRED APPROVALS	OWNER	FIRE SPRINKLER PLANS & DETAILS
NEW SPRINKLER SYSTEM INSTALLATION TO COMPLY WITH NFPA 13 PAMPHLET (2007 EDITION).			OWNER	STATE FIRE MARSHAL	DWG. NO. 1 OF 2
NEW BRANCH LINE PIPING (1") TO BE BLACK SCHEDULE 40 JOINED BY THREADED DUCTILE IRON FITTINGS.			STATE FIRE MARSHAL	PORTLAND FIRE DEPARTMENT	JOB NUMBER AU-5227-14
NEW BRANCH LINE PIPING (1 1/2"-2") TO BE BLACK SCHEDULE 10 WITH WELDED OUTLETS & GROOVED ENDS JOINED BY MECH COUP.			DRAWN BY: TTPP		SCALE AS SHOWN
NEW MAIN PIPING (2 1/2" & 3") TO BE BLACK SCHEDULE 10 WITH WELDED OUTLETS & GROOVED ENDS JOINED BY MECH COUP.			NICET LEVEL: IIIIIII	CERT.# 100854	DATE 12/1/14
OWNER TO PROVIDE SUFFICIENT HEAT THROUGHOUT NEW ADDITIONS TO PREVENT FREEZING OF WATER FILLED SPRINKLER PIPING AND EQUIPMENT. (MIN. 40' F)			CHECKED BY: WAF	CERT.# 095574	
			CONTRACTOR LICENSE # 101		
			CONTRACTOR RMS # 368		

"SHOP DRAWING"

ALLAGASH BREWING COMPANY
 (2014 FERMENTATION & PRODUCTION ADDITIONS)
 50 INDUSTRIAL WAY
 PORTLAND, ME. 04103

CONTRACT WITH: LANDRY-FRENCH CONSTRUCTION

EASTERN FIRE PROTECTION
 AUBURN/LEWISTON INDUSTRIAL AIRPARK, AUBURN, MAINE 04210