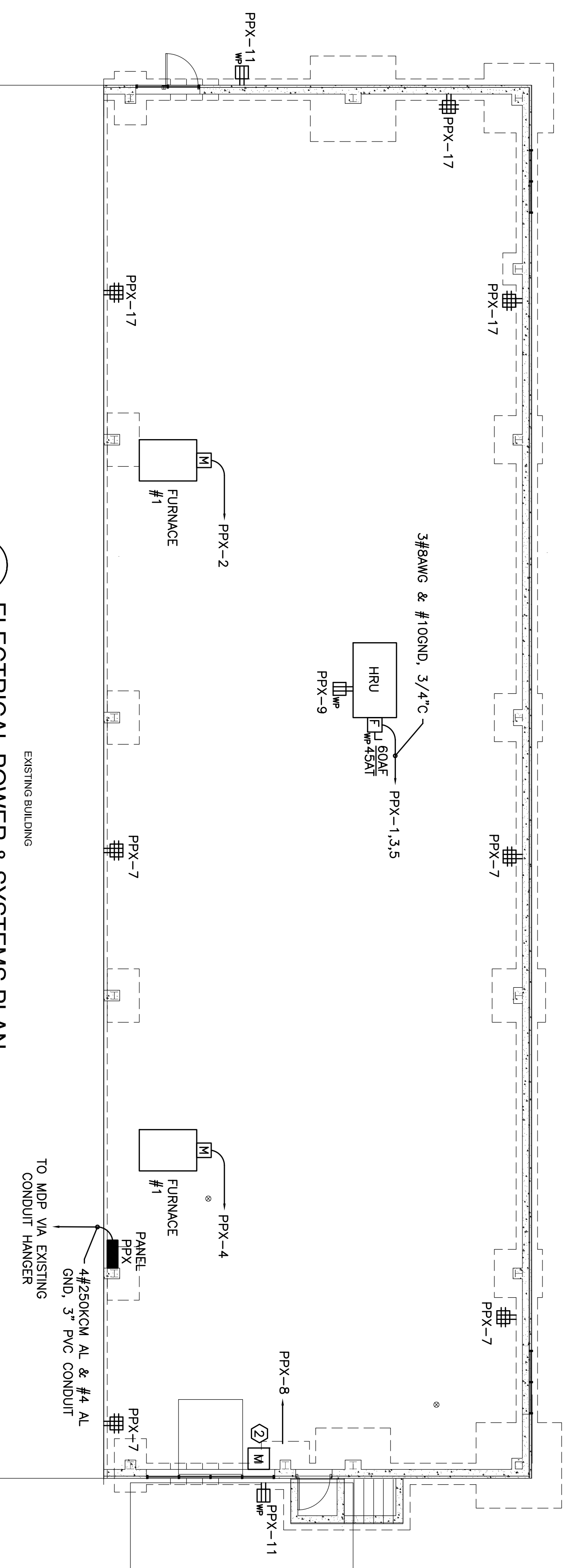


2 ELECTRICAL POWER & SYSTEMS PLAN
SCALE: 1/8" = 1'-0"



1 ELECTRICAL POWER & SYSTEMS PLAN
SCALE: 1/8" = 1'-0"

TYPE	DESCRIPTION	MANUFACTURER/ CATALOG NO.	LAMPS	MOUNTING	NOTES
A	4' FLUORESCENT HIGH BAY FIXTURE WITH (1) 4-LAMP BALLAST & (1) 2-LAMP BALLAST.	COLUMBIA VESSELYN MODEL: LHV4-654-GW	(6)-54W T5HO	CHAIN HUNG AT BOTTOM OF JOISTS	MATCH LAMP COLOR TO EXISTING LAMPS IN ADJACENT AREA.
B	EXTERIOR HID WALL PACK WITH DARK BRONZE FINISH & INTEGRAL PHOTOCELL FOR CONTROL.	HUBBELL LARDED MODEL: LMC250P81PC1	(1)-250W MH	WALL SURFACE	SEE ARCHITECTURAL PLANS FOR MOUNTING HEIGHTS
C	DOCK LIGHT.	N/A	150W INCD	WALL SWING BRACKET	
	EMERGENCY LIGHT W/ INTEGRAL BATTERY & CHARGER.	DUAL LITE MODEL: LZ12 OR 20	5W HALOGEN	WALL SURFACE	PROVIDE W/ ADDITIONAL CAPACITY FOR REMOTE HEADS AS NOTED.
	EMERGENCY EXIT SIGN, RED LETTERING W/ WHITE FINISH.	DUAL LITE MODEL: LXJRW	LED	UNIVERSAL	
WP	WEATHERPROOF REMOTE OUTDOOR REMOTE LIGHTING HEAD, DARK BRONZE FINISH.	DUAL LITE MODEL: OOR-S20605	5W HALOGEN	WALL SURFACE	

LIGHT FIXTURE SCHEDULE

KEYED NOTES:

- 1 ADJUSTABLE DOCK LIGHT.
- 2 DOCK LEVELER.
- 3 DAILIGHTING SENSOR, LOCATE IN FIELD.
- 4 CIRCUIT "a" - 4-LAMP BALLAST
CIRCUIT "b" - 2-LAMP BALLAST
- 5 FURNISH HOME RUN BACK TO EXISTING PANEL, MDP. FURNISH NEW 200A BREAKER IN PANEL MDP - 65 YAC, SQUARE D MODEL OGA32200.

POWER SYMBOLS

- 20 AMPERE, 120 VOLT DUPLEX GFCI RECEPTACLE, +18" AFF
- 20 AMPERE, 120 VOLT QUAD GFCI RECEPTACLE, +18" AFF
- JUNCTION BOX
- MANUAL TOGGLE-TYPE MOTOR STARTER
- PANELBOARD
- FUSED SAFETY SWITCH, RATING AS NOTED, FRAMESIZE FUSE/TRIP NEMA RATING

LIGHTING SYMBOLS

- FLUORESCENT LIGHT FIXTURE
- EXTERIOR FULL-CUTOFF HID WALL PACK
- FIXTURE MOUNTED ULTRASONIC/INFRARED OCCUPANCY SENSOR
- DAILIGHT HARVESTING PHOTOCELL DEVICE

FIRE ALARM SYMBOLS

- PULL STATION
- FIRE ALARM AUDIBLE/VISIBLE NOTIFICATION APPLIANCE (GENERAL EVACUATION)

ABBREVIATIONS

- WP WEATHERPROOF

NOTES:

1. ALL WORK SHALL BE IN COMPLIANCE WITH NFPA-70, NATIONAL ELECTRICAL CODE.
2. ALL MOTOR SAFETY SWITCHES, DISCONNECTS AND MOTOR STARTERS ARE FURNISHED BY DIVISION 1600 UNLESS NOTED AS FURNISHED WITH EQUIPMENT (FWE).
3. UNLESS OTHERWISE NOTED, CONVENIENCE RECEPTACLES SHALL BE MOUNTED 24 INCHES AFF AND LIGHTING TOGGLE SWITCHES 48 INCHES AFF.
4. ALL PENETRATIONS THROUGH FLOORS, RATED WALLS AND PARTITIONS SHALL BE SEALED WITH A UL APPROVED FIRE SEALANT MATERIAL TO MAINTAIN THE RATING OF THE SEPARATION.
5. LIGHTING TOGGLE SWITCHES SHALL BE COMMERCIAL SPECIFICATION GRADE, 120 VOLT, SIDE WIRED AS MANUFACTURED BY LEYTON, PASS & SEMOUR, OR APPROVED EQUAL, SHOWN OTHERWISE. GROUNDING TYPE, NEMA 5-20R, SIDE WIRED, AS MANUFACTURED BY LEYTON, PASS & SEMOUR, OR APPROVED EQUAL.
6. DEVICE COVERPLATES SHALL BE BRUSHED STAINLESS STEEL.
7. UNLESS OTHERWISE NOTED ALL HOMERUNS FOR 15 OR 20A CIRCUITS SHALL BE #12 (RANG & #12 GND, HOMERUNS FED FROM 20A, 1P CIRCUITS IN EXCESS OF 100 FEET FOR 120V CIRCUITS) SHALL BE #10AWG, ALL WIRING SHALL BE COPPER.
8. CONDUIT SYSTEMS, EXPOSED INTERIOR CONDUITS SHALL BE PVC, 3/4" MINIMUM, PROPERLY SUPPORTED VIA CABLE WHIPS MAY BE USED FOR CONNECTIONS TO LIGHTING AND VIBRATING EQUIPMENT MOUNTED INDOORS. LIQUIDTIGHT SHALL BE USED FOR CONNECTION TO ALL EQUIPMENT LOCATED OUTDOORS OR IN WET LOCATIONS.
9. LIGHTING CONTROL INTENT:
 - FIXTURES SHALL BE SWITCHED ON BY SWITCH, OFF BY SWITCH OR OCCUPANCY SENSOR.
 - DAILIGHT SENSOR SHALL BE LOCATED IN FIELD, PLACED SUCH THAT WHEN LIGHT LEVEL IN THE SPACE EXCEEDS 50 FC, LAMPS PER FURNITURE ARE SWITCHED OFF, WHEN LIGHTING DIMS BELOW 30 FC IN SPACE LIGHTS TURN BACK ON.
10. COORDINATE ALL FIRE ALARM SYSTEM DEVICES AND WIRING WITH NORRIS, INC. ALL DEVICES SHALL BE COMPLIANT FOR USE WITH THE EXISTING NOTIFIER SFP-1024 FIRE ALARM CONTROL PANEL. PROVIDE ALL EQUIPMENT, WIRING, CONDUIT AND PROGRAMMING FOR A COMPLETE INSTALLATION.

DIRECTORY	KVA LOAD			#	BKR AMPS	PHASE	KVA LOAD			DIRECTORY
	A	B	C				A	B	C	
HRV (NEW)	4.3			1	45	A	20	2	1.3	FURNACE #1
AREA RECEPTACLES		4.3		3		B	20	4	1.3	FURNACE #2
ROOFTOP RECEPTACLE	1.5			7	20	A	20	8	1.2	DOCK LEVELER
EXTERIOR RECEPTACLES	0.2			9	20	B	20	10	1.1	DOCK LEVELER
SPARE			0.4	11	20	C	12	12	1.1	LIGHTING "a"
SPARE			1.3	20	A	20	14	0.6		LIGHTING "b"
SPARE			15	20	B	20	16	0.6		LIGHTING "c"
AREA RECEPTACLES			1.1	17	20	C	20	18	0.6	EXTERIOR LIGHTS
SPARE				19	20	A	20	20	*	SPARE
SPARE				21	20	B	20	22	*	SPARE
SPARE				23	20	C	20	24	*	SPARE
SPARE				25	20	A	26	*	*	SPARE
SPARE				27	20	B	28	*	*	SPARE
SPARE				29	20	C	30	*	*	SPARE
SPARE				31	20	A	32	*	*	SPARE
SPARE				33	20	B	34	*	*	SPARE
SPARE				35	20	C	36	*	*	SPARE
SPARE				37	20	A	38	*	*	SPARE
SPARE				39	20	B	40	*	*	SPARE
SPARE				41	20	C	42	*	*	SPARE
SUBTOTAL	5.8	4.5	5.8				3.1	3.0	1.9	SUBTOTAL

VOLTAGE: 208V/120V	PHASE: 3	POLES: 4	TOTAL KVA A-PHASE	8.9	PANEL	PPX
MAIN BREAKER: 200A			TOTAL KVA B-PHASE	7.5		
MOUNTING: SURFACE			TOTAL KVA C-PHASE	7.7		
SHORT CIRCUIT RATING: 18000			TOTAL KVA	24.1	LOCATION	NEW ADDITION

ISSUED FOR CONSTRUCTION	DATE	STATUS
KLM	10/29/10	ISSUED FOR CONSTRUCTION

ALLGASH BREWERY
50 INDUSTRIAL WAY PORTLAND, MAINE
ELECTRICAL POWER & SYSTEMS PLAN

E.S. BOULOS CO.
ELECTRICAL CONTRACTORS
45 BRADLEY DRIVE
WESTBROOK, ME 04092
TEL: (207) 464-3706
FAX: (207) 464-1833

SWIFTCURRENT
Engineering Services
273 Main Street
Yarmouth, ME 04096
Tel: (207) 847-9280

Approved:

Design By: TDM
Drawn By: KLM
Date: 10-29-2010
Job #: 10041
Scale: AS NOTED
E1.0