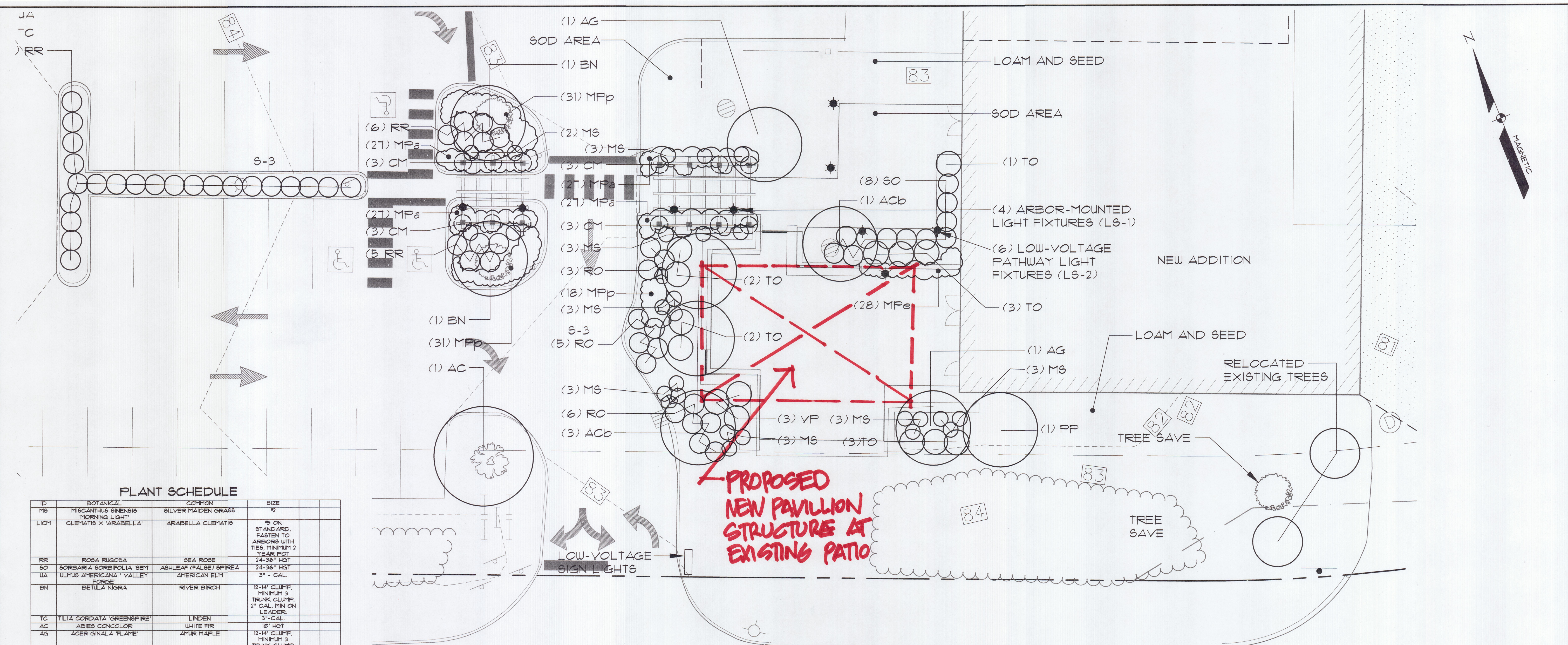


C2



PLANT SCHEDULE

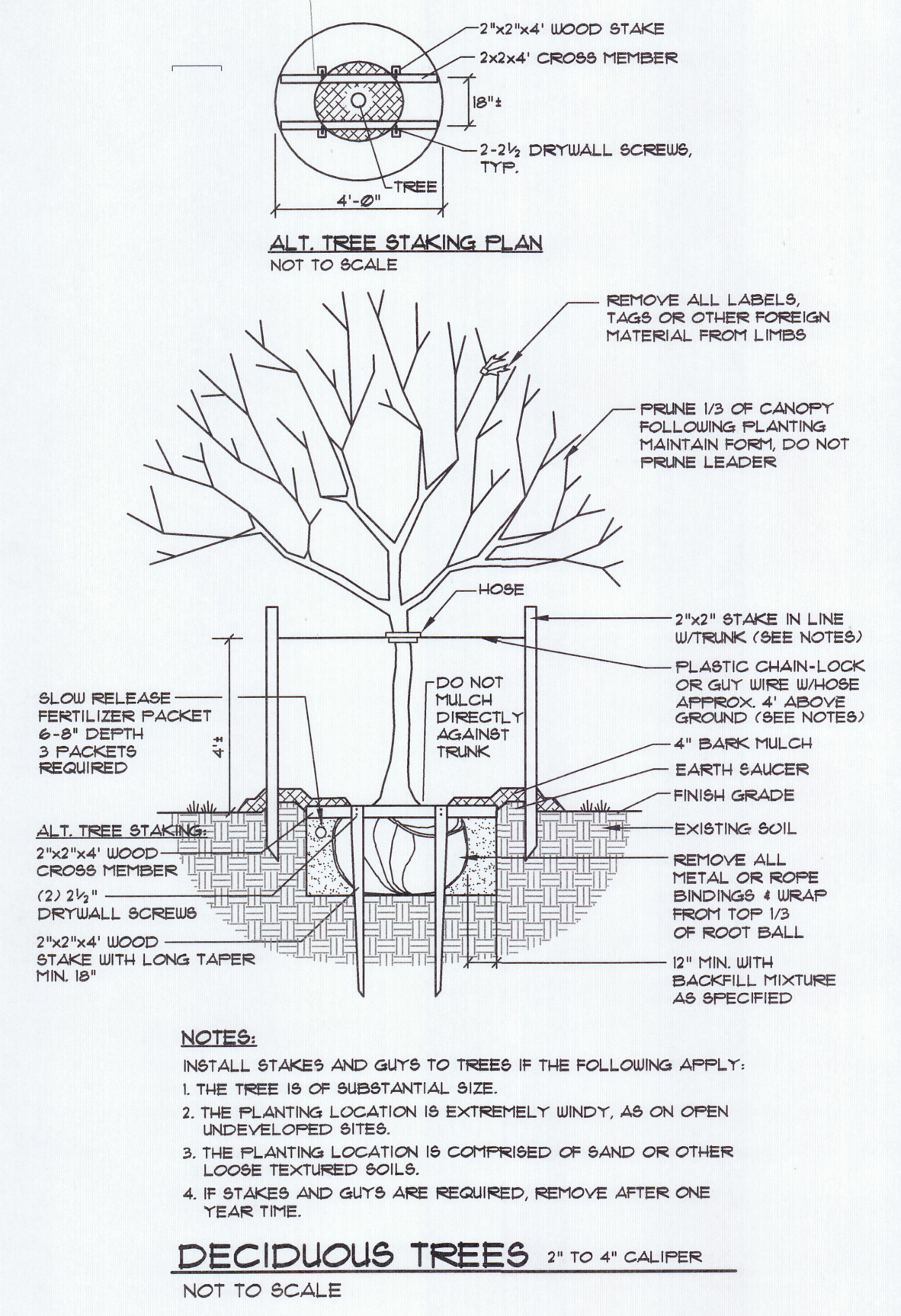
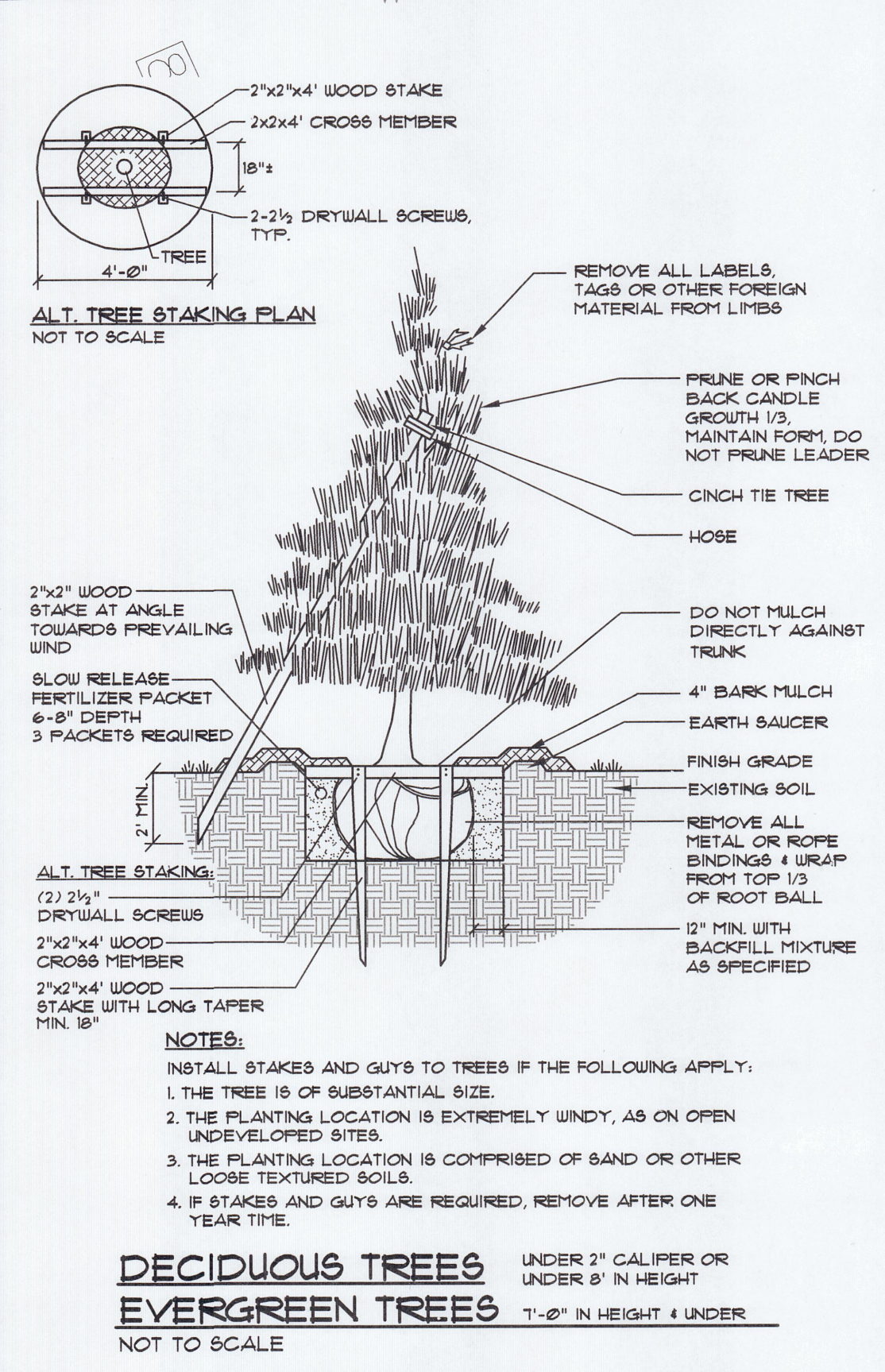
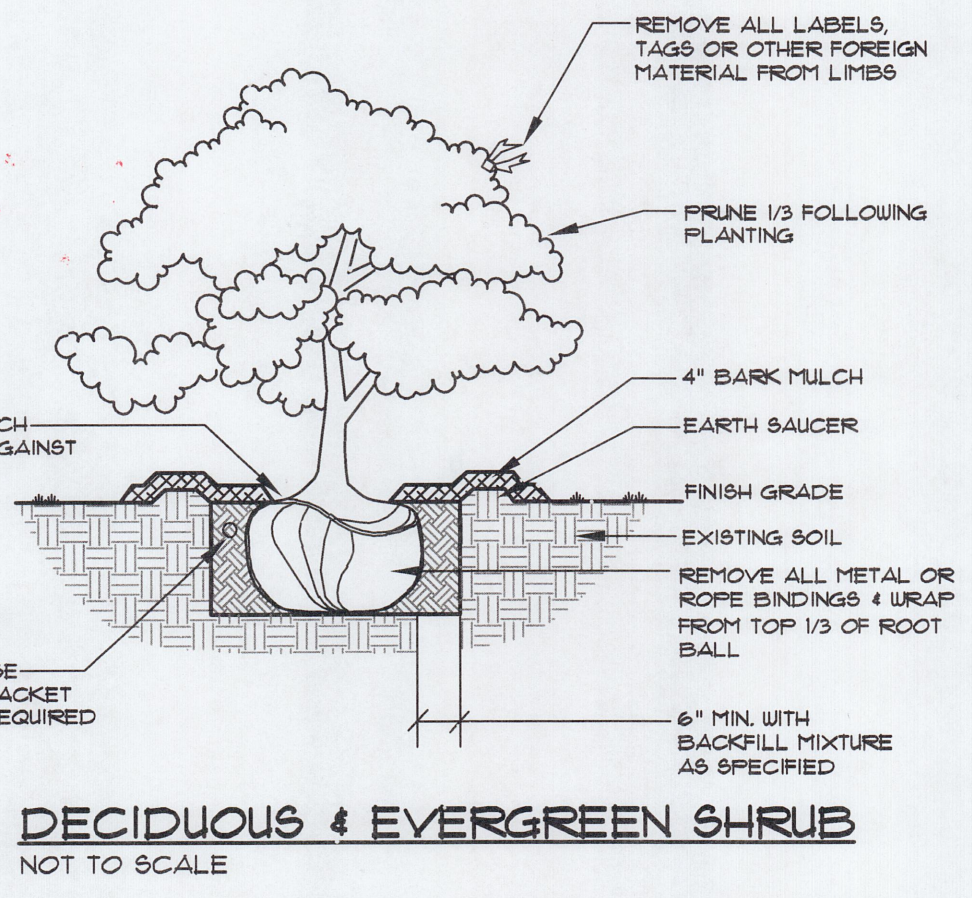
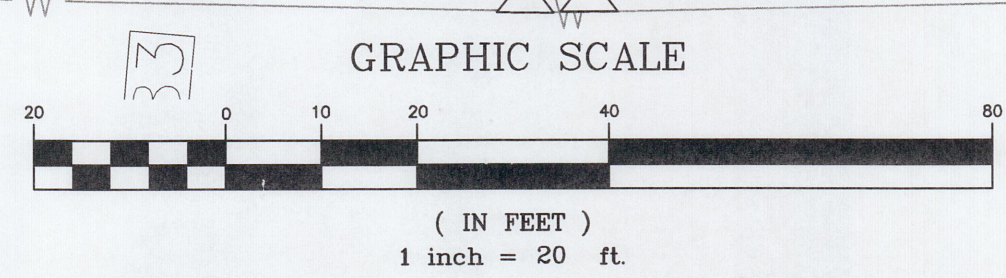
ID	BOTANICAL	COMMON	SIZE	
MS	MISCANTHUS SINENSIS 'MORNING LIGHT'	SILVER MAIDEN GRASS	2'	
LICH	CLEMATIS X 'ARABELLA'	ARABELLA CLEMATIS	5' ON STANDARD, FASTEN TO ARBORS WITH TIES, MINIMUM 2 YEAR POT	
RR	ROSA RUGOSA	SEA ROSE	24-36" HGT	
SO	SORBARIA SORBIFOLIA 'SEY'	ASHLEAF (PALSE) SPIREA	24-36" HGT	
UA	ULMUS AMERICANA 'VALLEY FORGE'	AMERICAN ELM	3" - CAL.	
BN	BETULA NIGRA	RIVER BIRCH	8-14' CLUMP, MINIMUM 3 TRUNK CLUMP, 2" CAL. MIN ON LEADER	
TC	TILIA CORDATA 'GREENSPIRE'	LINDEN	3" - CAL.	
AC	ABIES CONCOLOR	WHITE FIR	10' HGT	
AG	ACER GINALE 'FLAME'	AMUR MAPLE	8-14' CLUMP, MINIMUM 3 TRUNK CLUMP, 2" CAL. MIN ON LEADER	
FC	PYRUS CALLERYANA 'CLEVELAND SELECT'	CLEVELAND SELECT PEAR	3" - CAL.	
RO	ROSA RUGOSA 'KNOCK OUT'	KNOCK OUT ROSE	6'	
FP	PICEA RUGOSA 'FAT ALBERT'	FAT ALBERT SPRUCE	6-8' HGT	
WF	WEIGELA FLORIDA 'CARLTON'	GHOST WEIGELA	24-36" HGT	
HA	HYDRANGEA ARBORESCENS 'ANNABELLE'	ANNABELLE HYDRANGEA	3-4' HGT	
FQ	PARTHENOCISSUS QUINQUEFOLIA	VIRGINIA CREEPER	5' ON STANDARD, FASTEN TO ARBORS WITH TIES, MINIMUM 2 YEAR POT	
VP	VIBURNUM FLICATUM 'TOMENTOSUM 'SHASTA'	DOUBLEFILE VIBURNUM	4-5' HGT	
MIX ID	TITLE	BOTANICAL	COMMON	SIZE
MPP	PARKING LOT MIX	CALLIRHOE INVOLUCRATA NERFETA FAASSENI 'WALKER'S LOW' RUDBECKIA FULGIDA	POPPY MALLOW CATMINT BLACK EYED SUSAN	" " "
MFA	ARBOR MIX	HOSTA 'TRUE BLUE' STACHYS BYZANTINA 'SILVER CARPET' DIANTHUS GRATIOPOLITANUS 'TINY RUBIES' HEMEROCALLIS FULVA 'RUBY STELLA'	HOSTA LAMB'S EARS PINKS DAYLILY	" " 4" CELL "
MFS	SIGN MIX	HEMEROCALLIS FULVA 'STELLA D'ORO' PEROVSKIA ATRIFLORICIFOLIA 'LITTLE SPIRE' SEDUM SPECTABILE 'AUTUMN JOY' RUDBECKIA FULGIDA	DAYLILY RUSSIAN SAGE SEDUM BLACK EYED SUSAN	" 1/4" RATIO " "
MFB	BREAK MIX	HOSTA 'ORANGE MARSHALDE' HEUCHERA WICKSTANTHA 'PALACE PURPLE' GERANIUM 'ROZANNE'	HOSTA CORAL BELLS GERANIUM	" " "
MFE	ENTRY MIX	HEMEROCALLIS FULVA 'STELLA D'ORO' CALLIRHOE INVOLUCRATA IRIS SIBERICA 'CAESAR'S BROTHER' SALVIA SUPERBA 'FIAT NIGHT' STACHYS BYZANTINA 'SILVER CARPET'	DAYLILY POPPY MALLOW SIBERIAN IRIS MAY NIGHT SALVIA LAMB'S EARS	" " " " "
MFP	PERENNIAL MIX	LEUCANTHEMUM SUPERBUM 'BECKY' VERONICA AUSTRACA 'CRATNE LAKE BLUE' IRIS SIBERICA 'CAESAR'S BROTHER' MONARDA DIDYMA 'FIREBALL' CENOTHERA MISSOURIENSIS	SHASTA DAISY SPEEDWELL SIBERIAN IRIS BEE BALM OZARK SUNDROP	" " " " "

LEGEND

EXISTING	DESCRIPTION	PROPOSED
---	BOUNDARY LINE/ROW	---
---	ABUTTER LINE/ROW	---
---	SETBACK	---
---	EASEMENT	---
---	BUILDING	---
---	WETLANDS	---
---	EDGE WETLAND	---
---	SIGN	---
---	EDGE PAVEMENT	---
---	EDGE CONCRETE	---
---	CURBLINE	---
---	TREELINE	---
○	DECIDUOUS TREE	○
●	CANIFEROUS TREE	●
---	MULCH LINE	---
---	SCREENING FENCE	---
○	BOLLARD	○
○	LIGHT POLE/WALL	○
○	UTILITY POLE	○

LIGHTING LEGEND

L6-1	UNIQUE LIGHTING SYSTEMS: COMET - B25-20-UB-6B-16-100-20
L6-2	UNIQUE LIGHTING SYSTEMS: GALAXY - F28-C25-39-EK-APOLLCOPT
●	KIM LIGHTING: S-3 - EKG401-3/200HP8-E18 (20' MOUNTING HEIGHT) S-3S - EKG401-3/200HP8-E18H8 (20' MOUNTING HEIGHT) S-4S - EKG401-4/250HP8-E18H8 (20' MOUNTING HEIGHT)



REV.	BY:	DATE:	STATUS:
A	RLM	07/06/12	PRELIMINARY SITE PLAN SUBMISSION TO CITY

SEBAGO TECHNICALS
 WWW.SEBAGO TECHNICALS.COM
 150 Main Street, Suite B
 South Portland, ME 04106
 Tel: 207-200-2100 Fax: 207-783-8666

PROJECT NO. 02249
 FIELD BOOK DESIGN CHKD DRAWN JAR
 KSM KSM 847

LANDSCAPE AND LIGHTING PLAN
 OF:
 TURNPIKE INDUSTRIAL PARK-LOTS 17, 18 & 19
 INDUSTRIAL WAY
 PORTLAND, MAINE
 FOR:
 ALLAGASH BREWING
 50 INDUSTRIAL WAY NE 04103
 PORTLAND, MAINE 04103

DATE: 06/19/12 SCALE: 1" = 20'
 SHEET 6 OF 8

THIS PLAN SHALL NOT BE MODIFIED WITHOUT WRITTEN PERMISSION FROM SEBAGO TECHNICALS, INC. ANY ALTERATIONS, AUTHORIZED OR OTHERWISE, SHALL BE AT THE USER'S SOLE RISK AND WITHOUT LIABILITY TO SEBAGO TECHNICALS, INC.

02249L.dwg; TAB: 02249L-10 scale