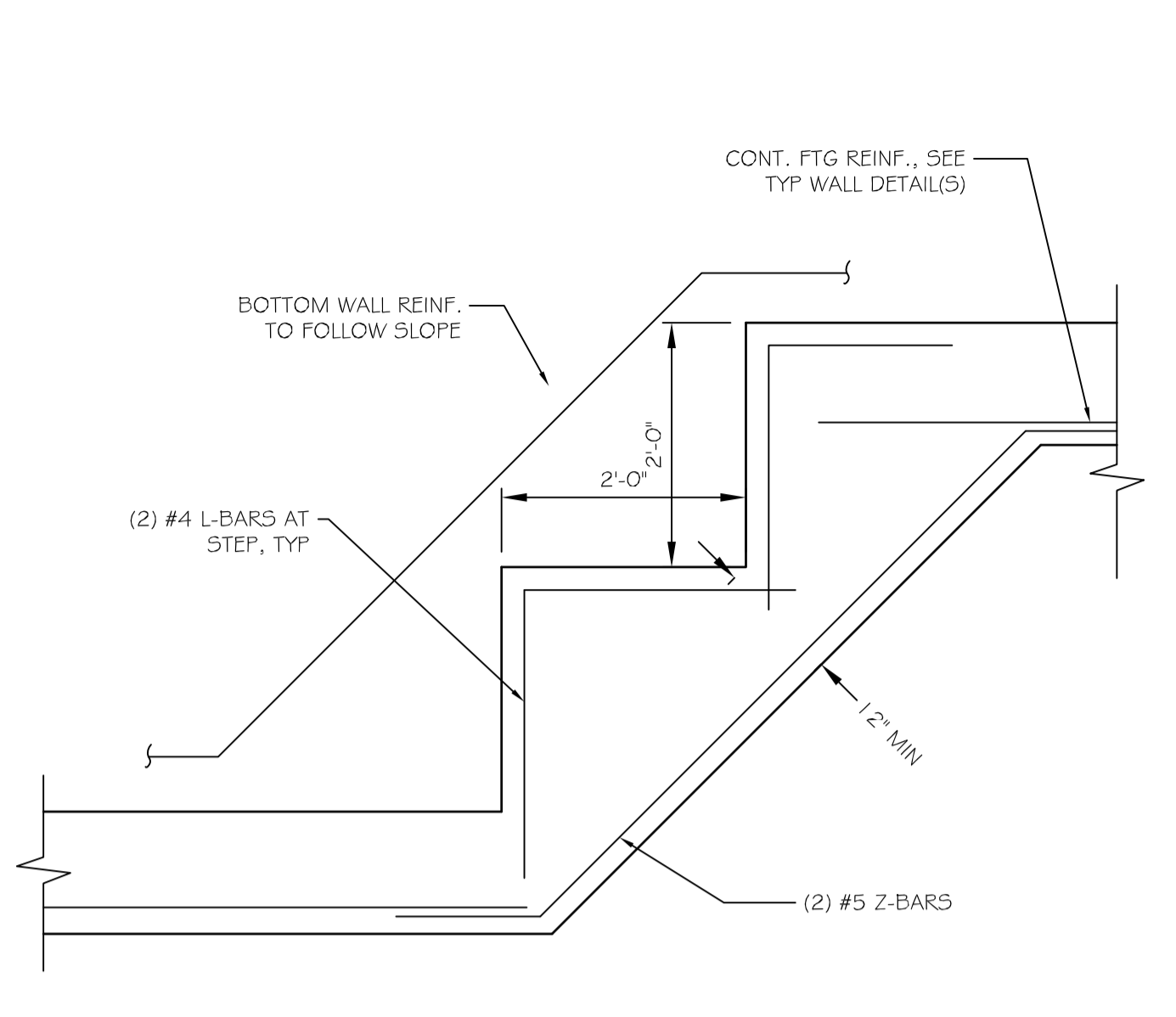
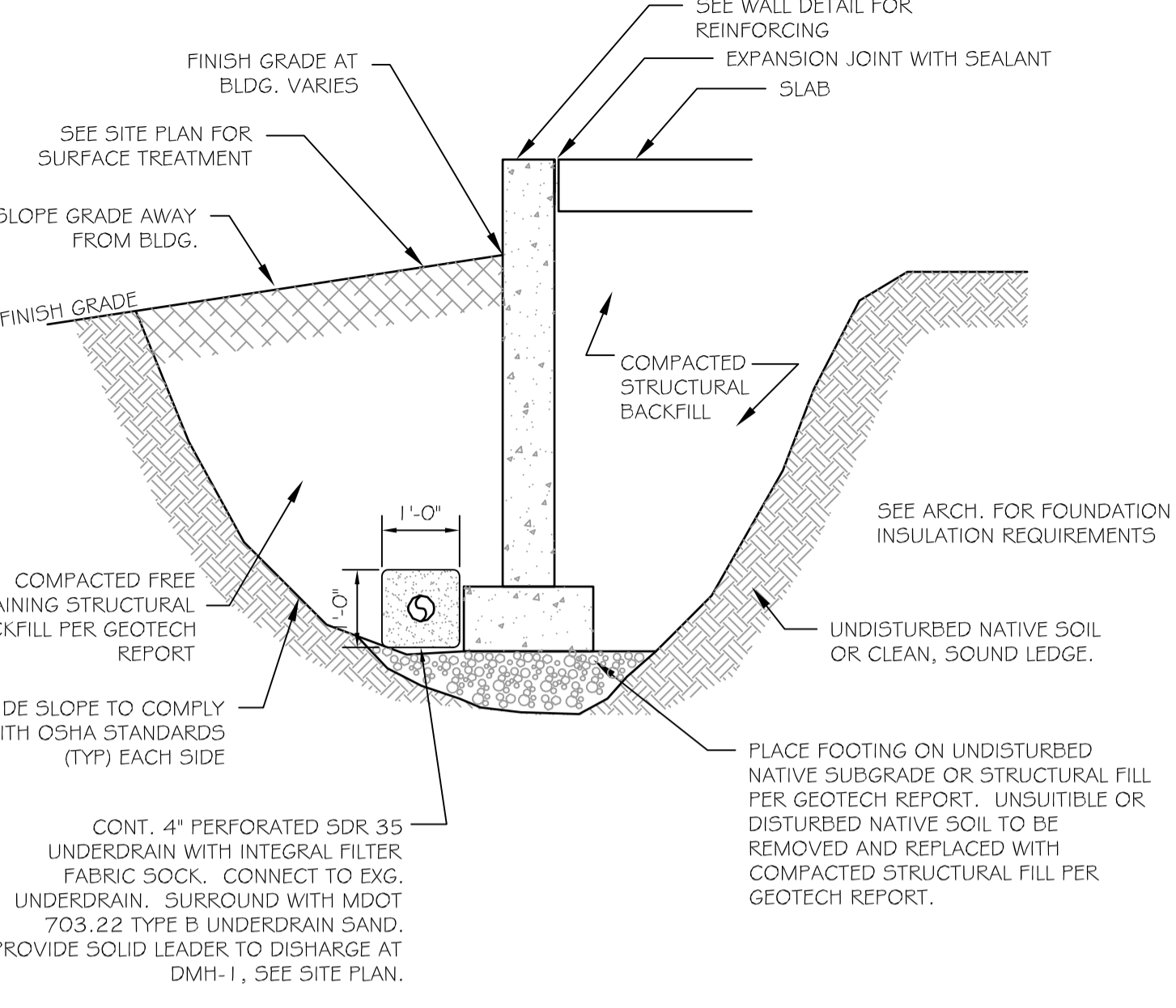
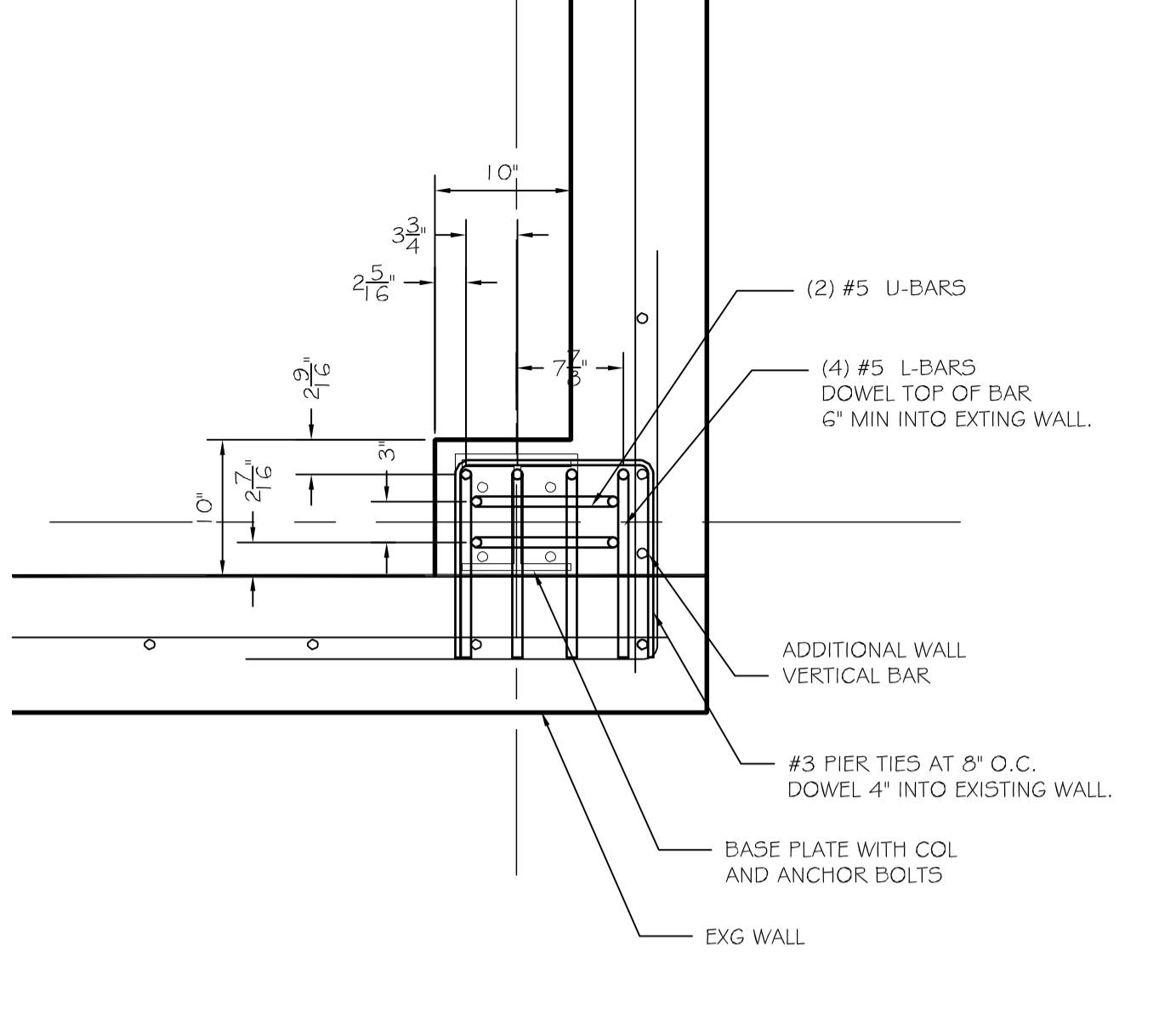
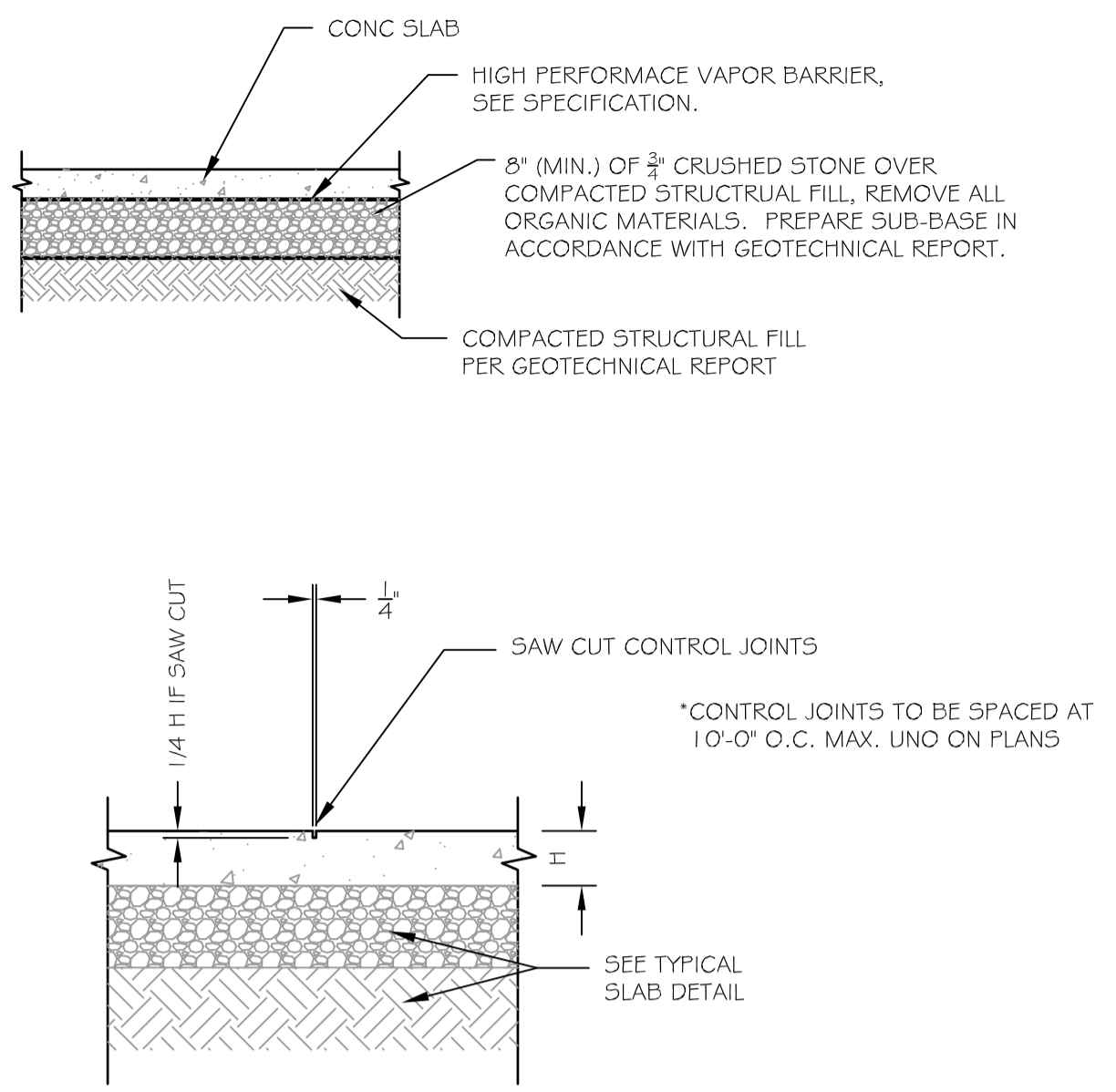




Reviewed for Code Compliance
Inspection Division
Approved with Conditions
Date: 09/15/14

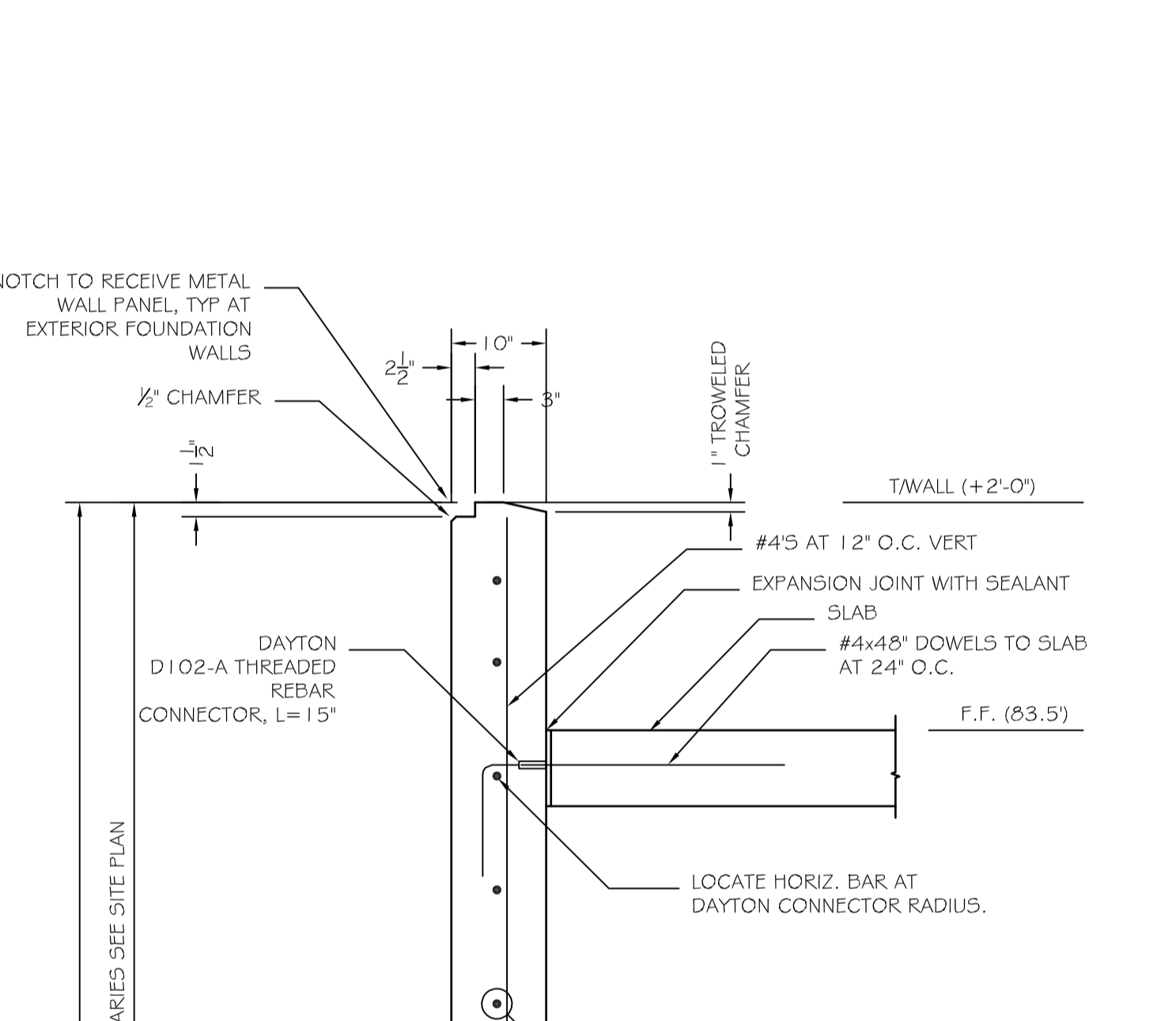
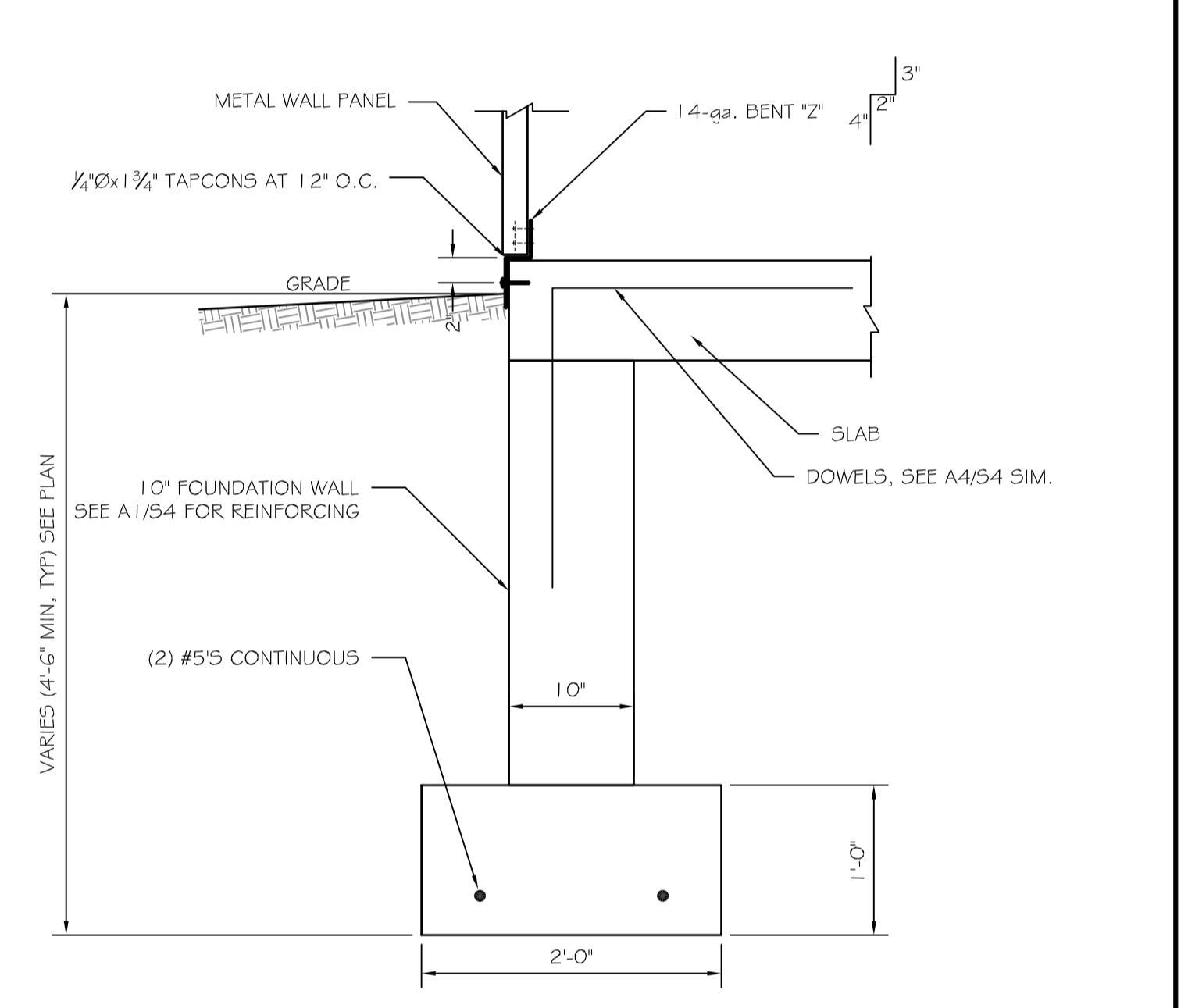
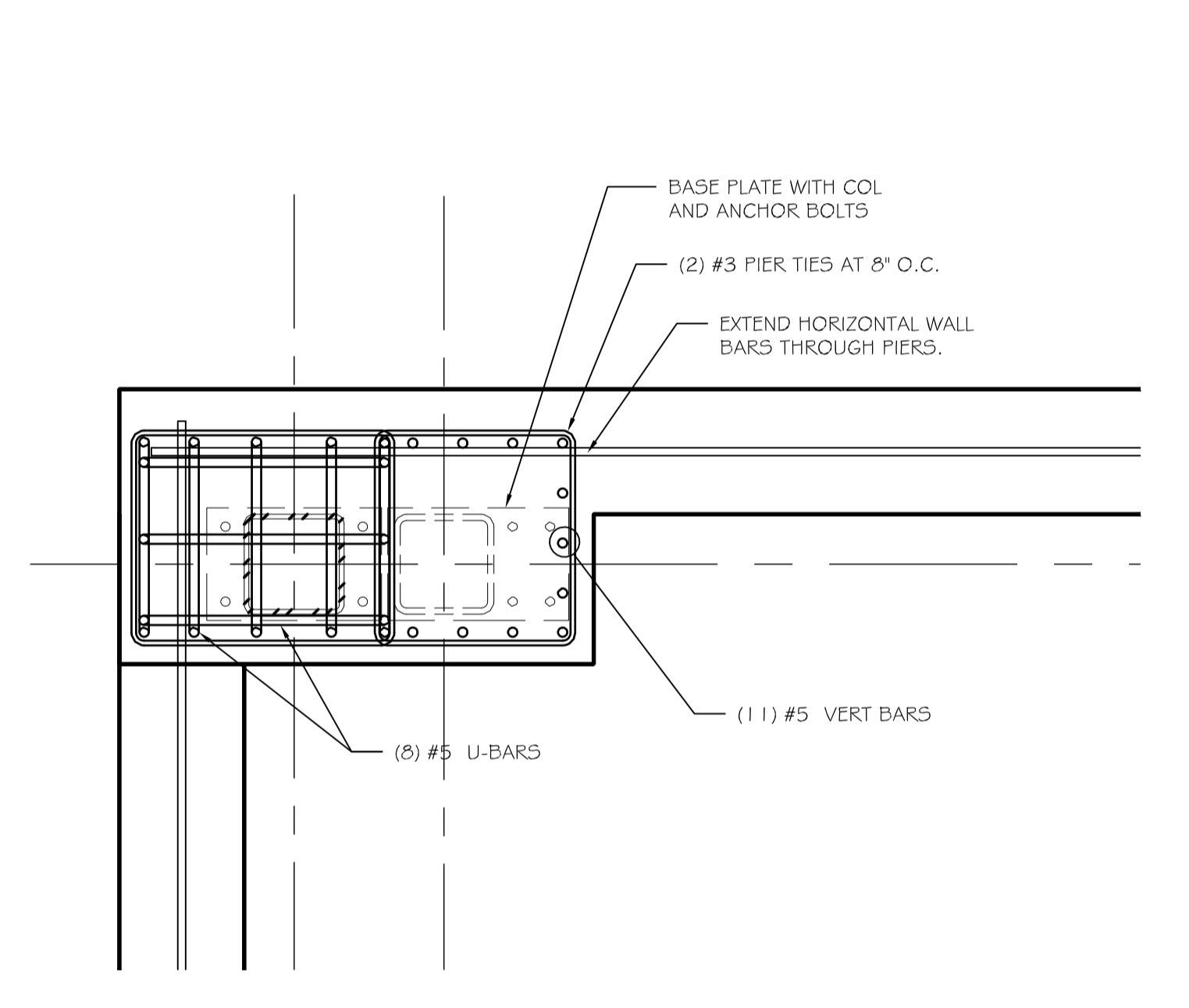
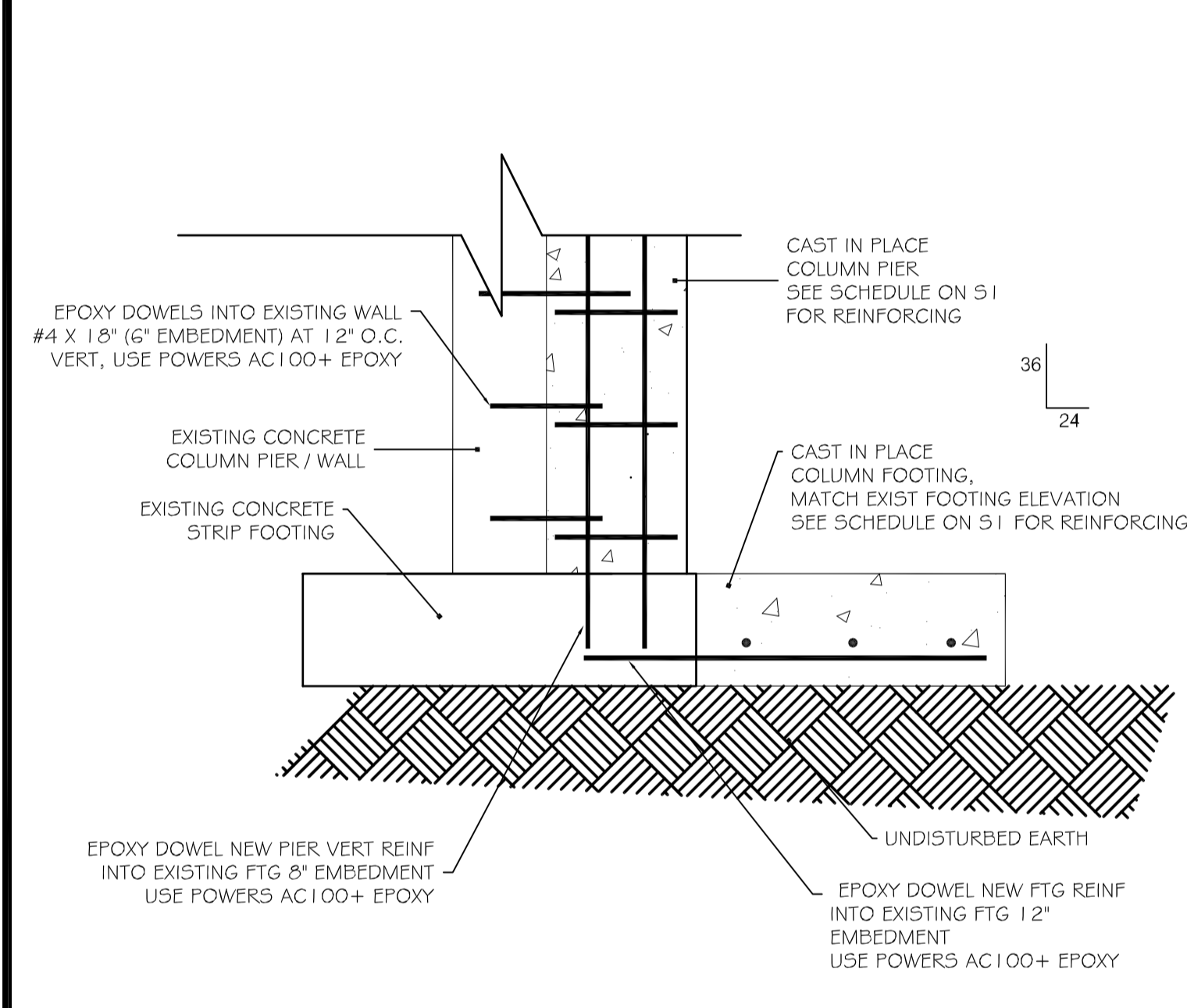


C4 TYPICAL SLAB DETAILS
SCALE: NO SCALE

C3 PIER P3 AT CORNER
SCALE: 1/2" = 1'-0"

C2 TYPICAL EARTHWORK DETAIL
SCALE: NO SCALE

C1 FOOTING STEP DETAIL
SCALE: NO SCALE

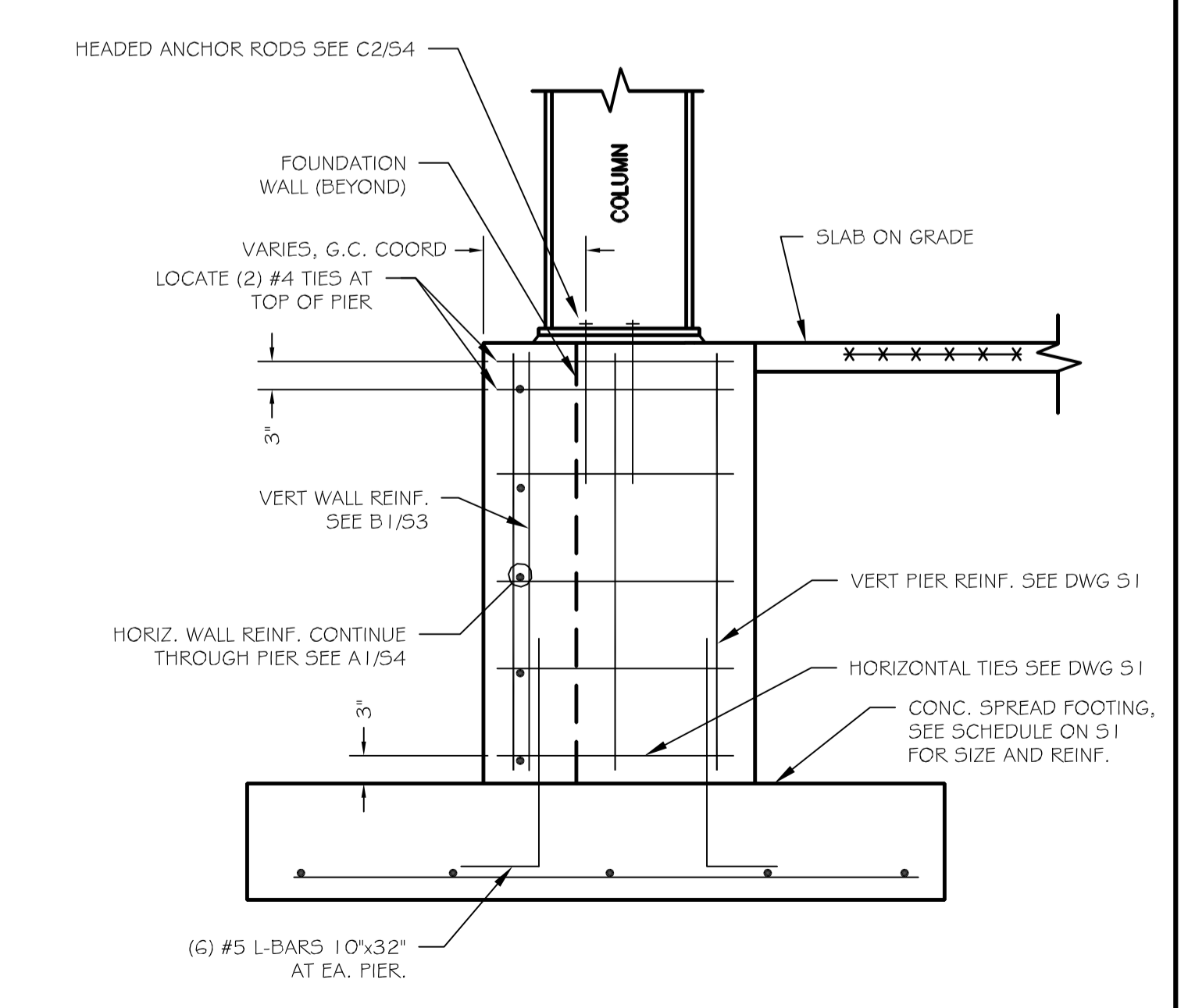
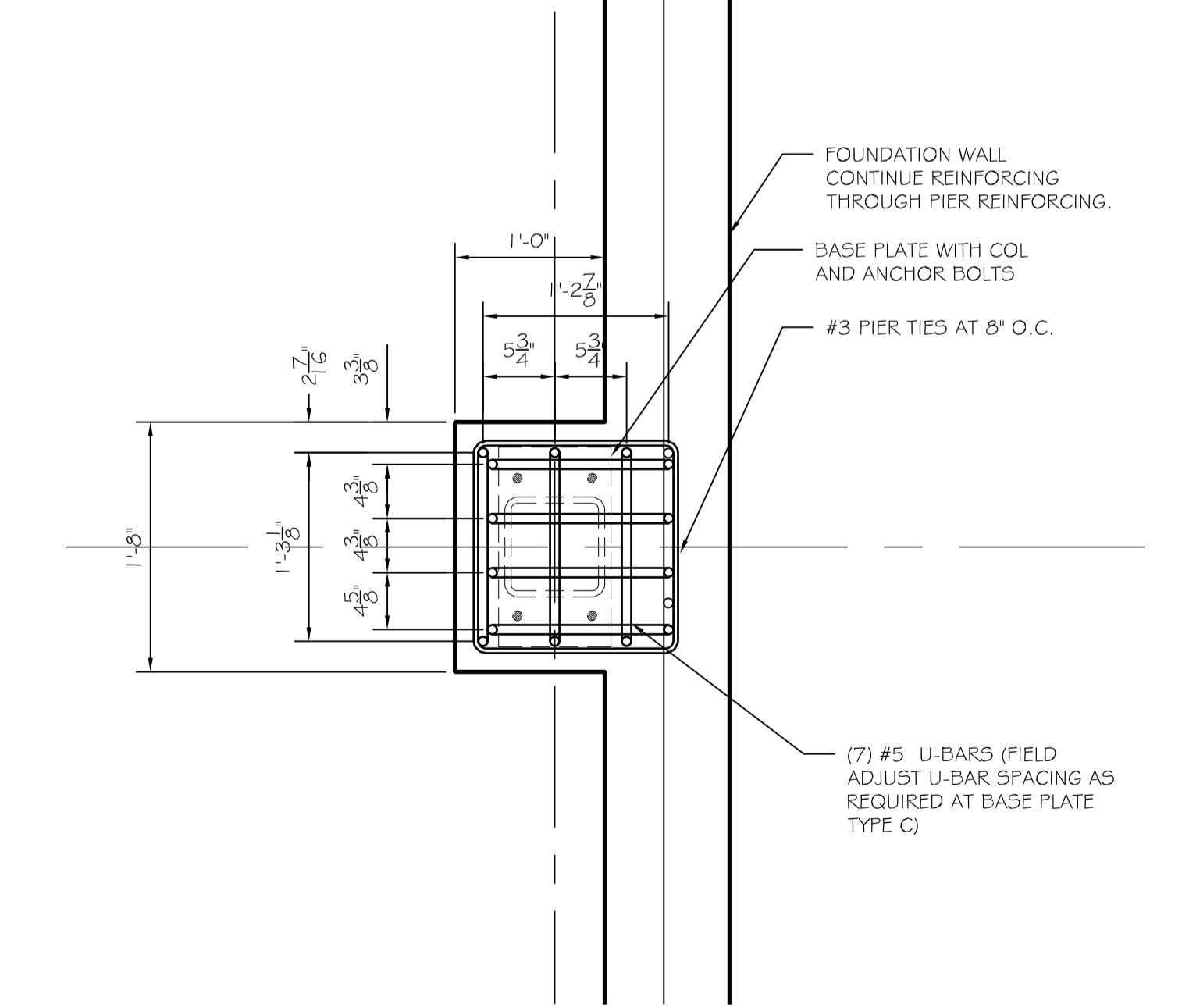
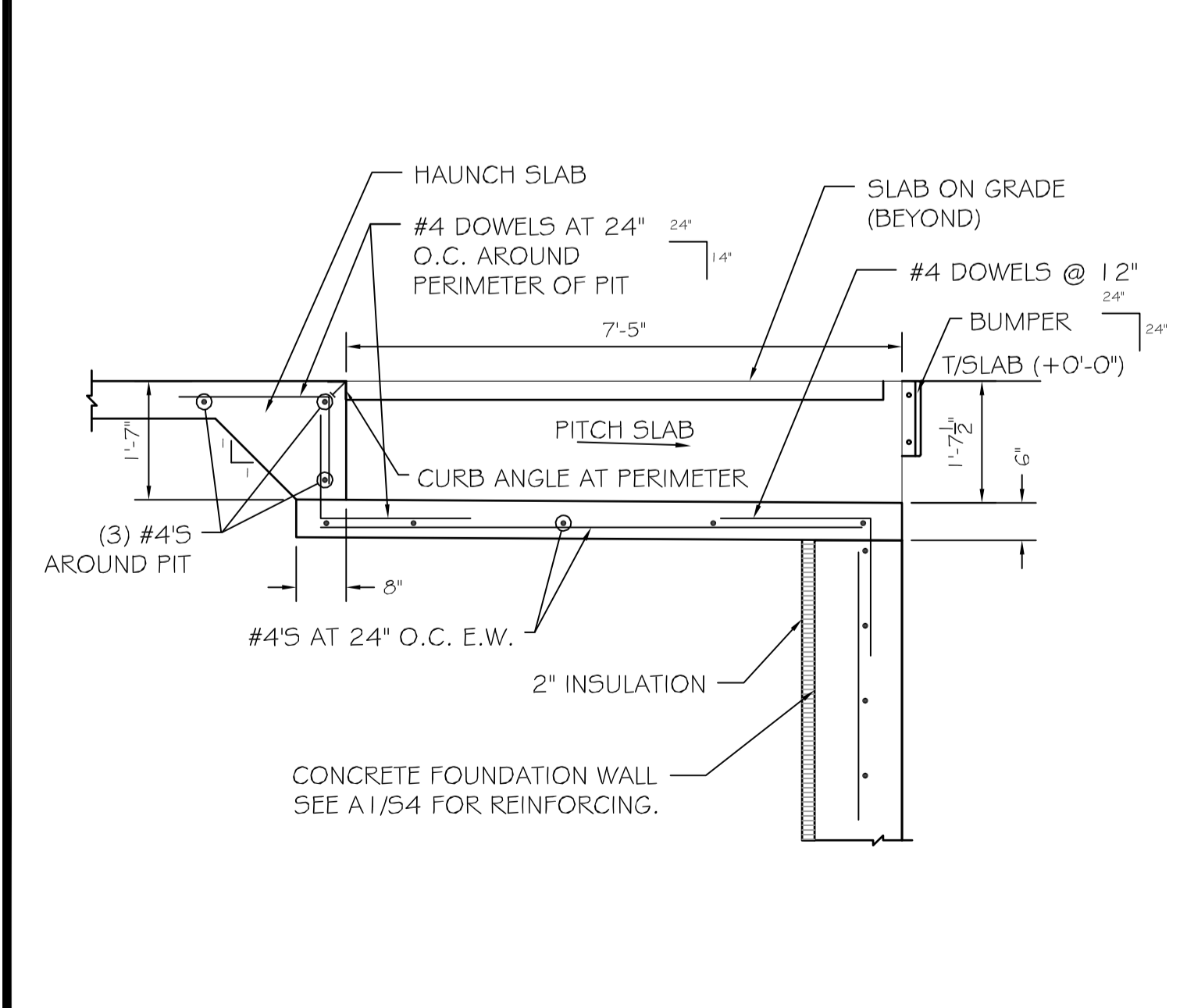


B4 COLUMN AND FOOTING AT EXG. WALL
SCALE: NO SCALE

B3 PIER P4
SCALE: 1/2" = 1'-0"

B2 FOUNDATION DETAIL
SCALE: 1" = 1'-0"

A1 1 0" FOUNDATION WALL AT TWALL +2'-0"
SCALE: 3/4" = 1'-0"



A4 DOCK LEVELLER PIT
SCALE: NO SCALE

A3 TYP. PIER / FOOTING SECTION AT EXTERIOR WALL
SCALE: NO SCALE

A2 TYP. PIER / FOOTING SECTION AT EXTERIOR WALL
SCALE: NO SCALE

A1 1 0" FOUNDATION WALL AT TWALL +2'-0"
SCALE: 3/4" = 1'-0"

ASSOCIATED DESIGN PARTNERS INC.
Office: (207) 878-1751
Fax: (207) 878-1788
E-Mail: adp@adpengineering.com
80 Leighton Road
Falmouth, Maine 04105

THIS DRAWING, DESIGN AND ELECTRONIC FILE ARE THE PROPERTY OF ASSOCIATED DESIGN PARTNERS, INC. THE REPRODUCTION, COPYING OR ANY OTHER USE OF THIS DOCUMENT WITHOUT WRITTEN CONSENT IS PROHIBITED.

PROJECT: **ALLAGASH 2015 EXPANSION**
100 INDUSTRIAL WAY, PORTLAND ME
FOR: ALLAGASH BREWING CO.
SHEET TITLE: **FOUNDATION DETAILS**
ISSUED FOR PERMITTING

REVISIONS	DATE	DESCRIPTION
No.	BY	
1		
2		
3		
4		

DATE : 7/25/14
SCALE : AS NOTED
DESIGN BY: ASW
DRAWN BY: RSC
FILE #:
PROJECT NUMBER:
14064
SHEET NO:
64