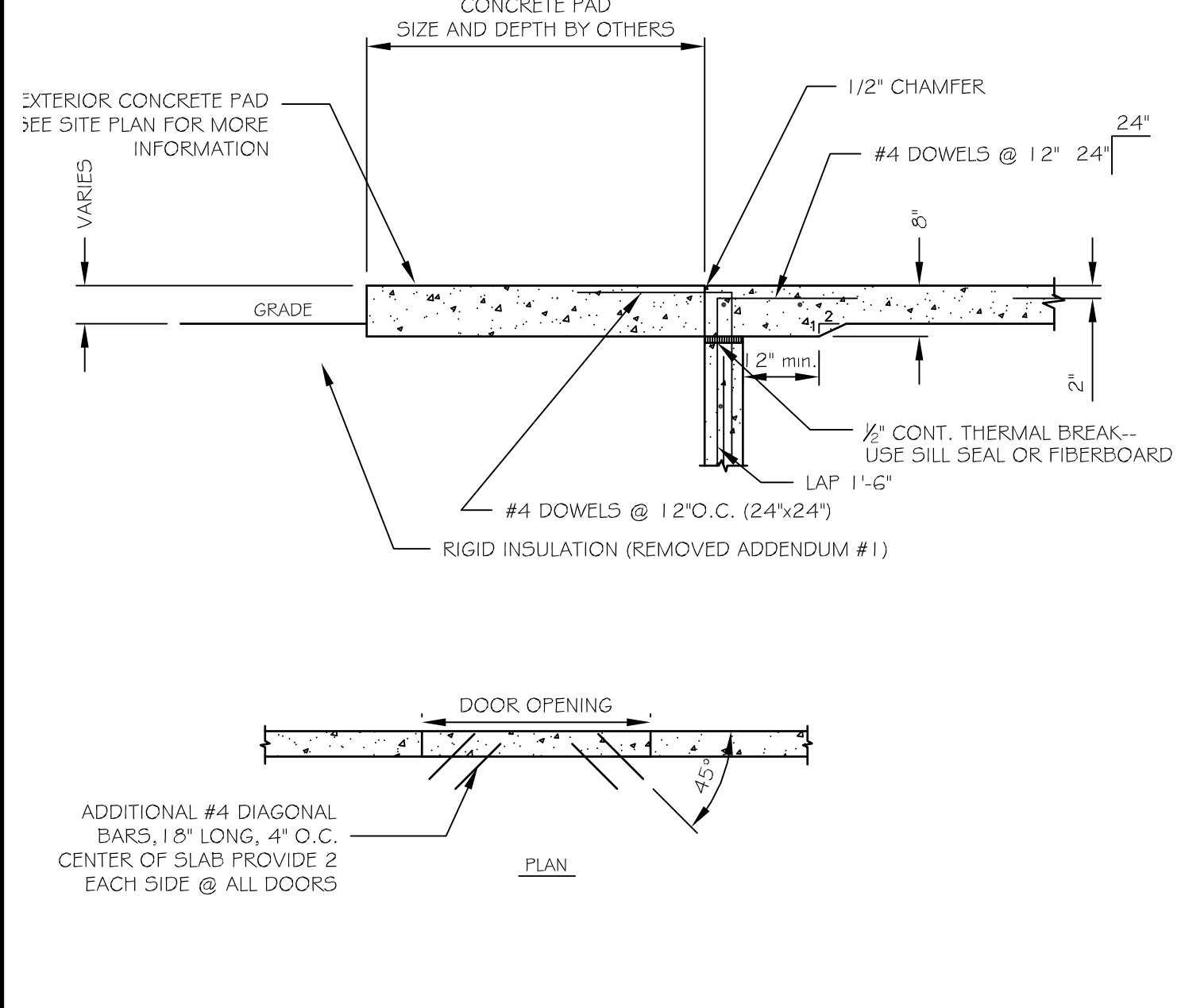
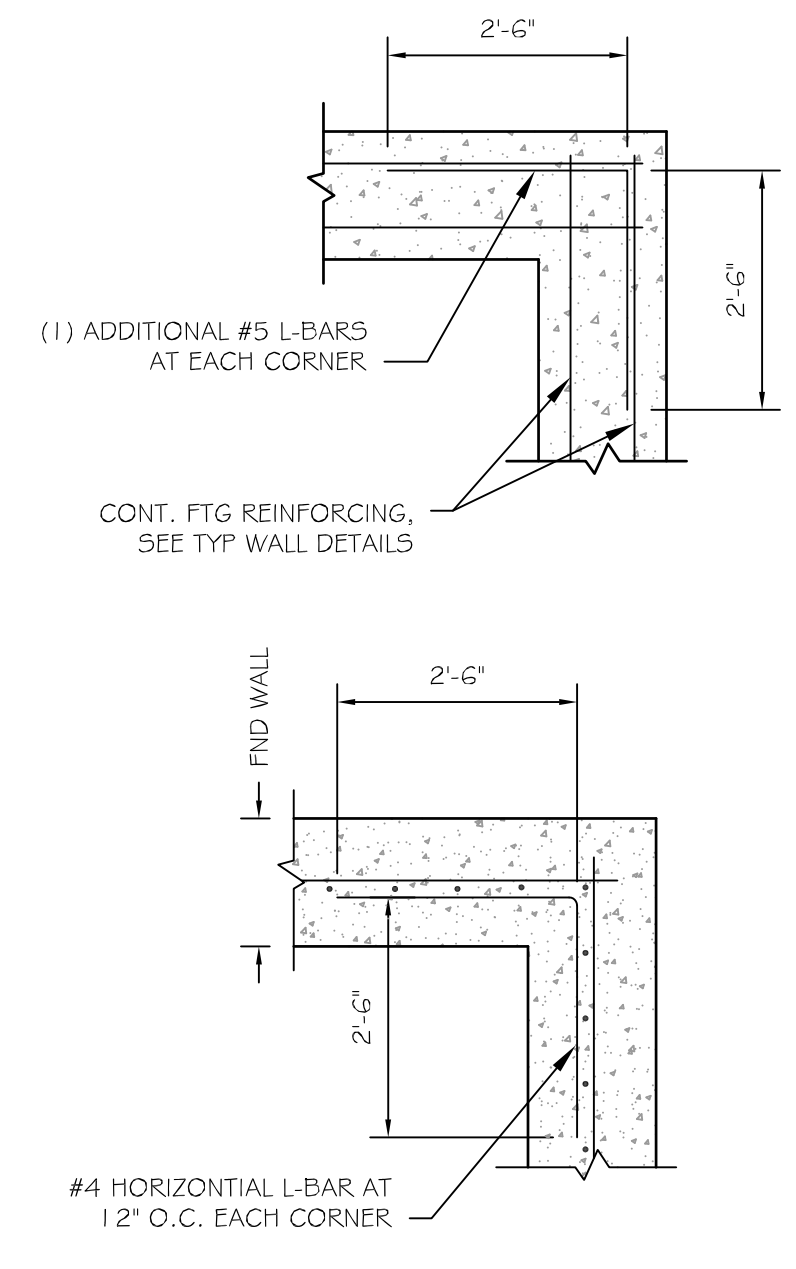
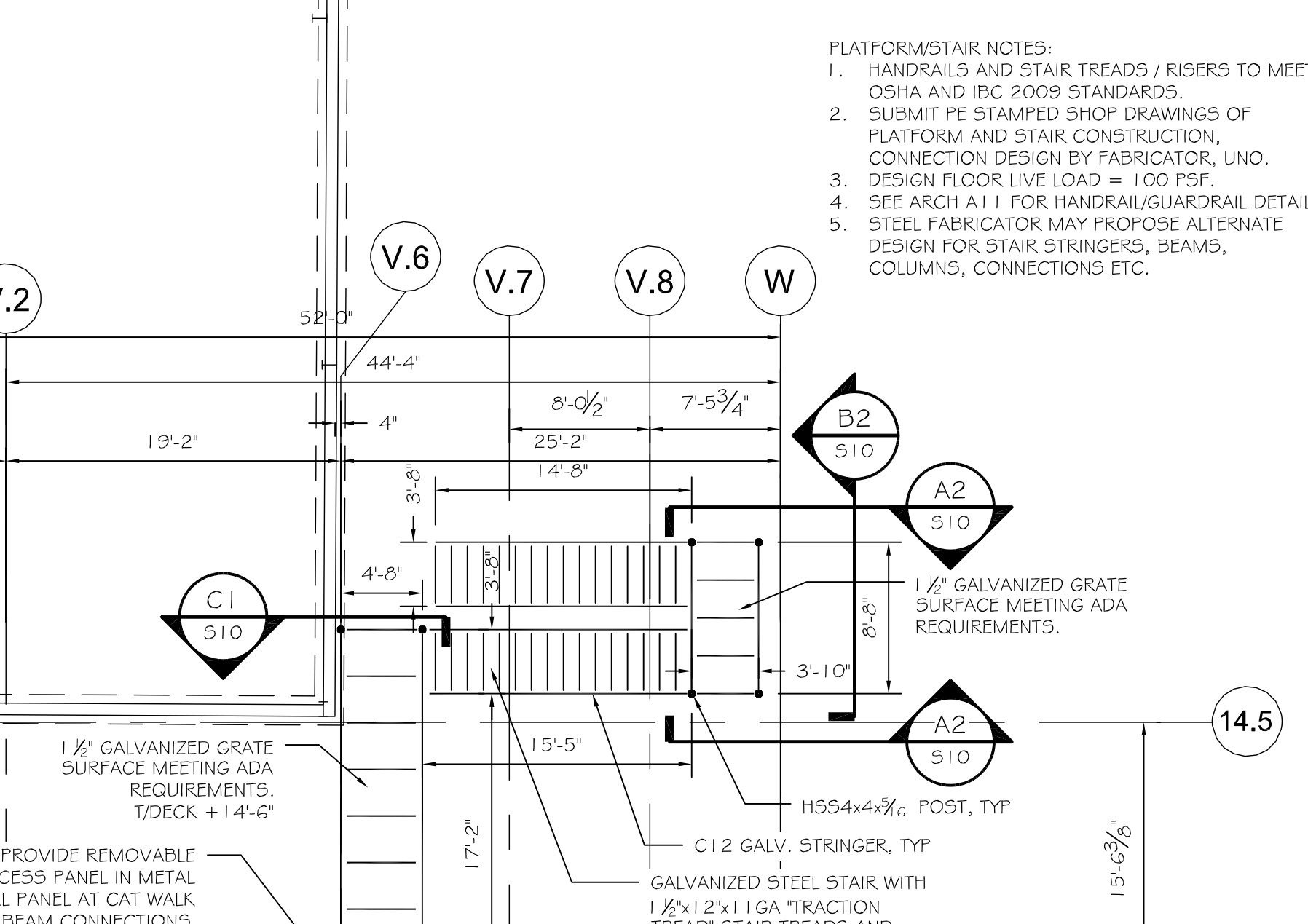




Date: 09/15/14

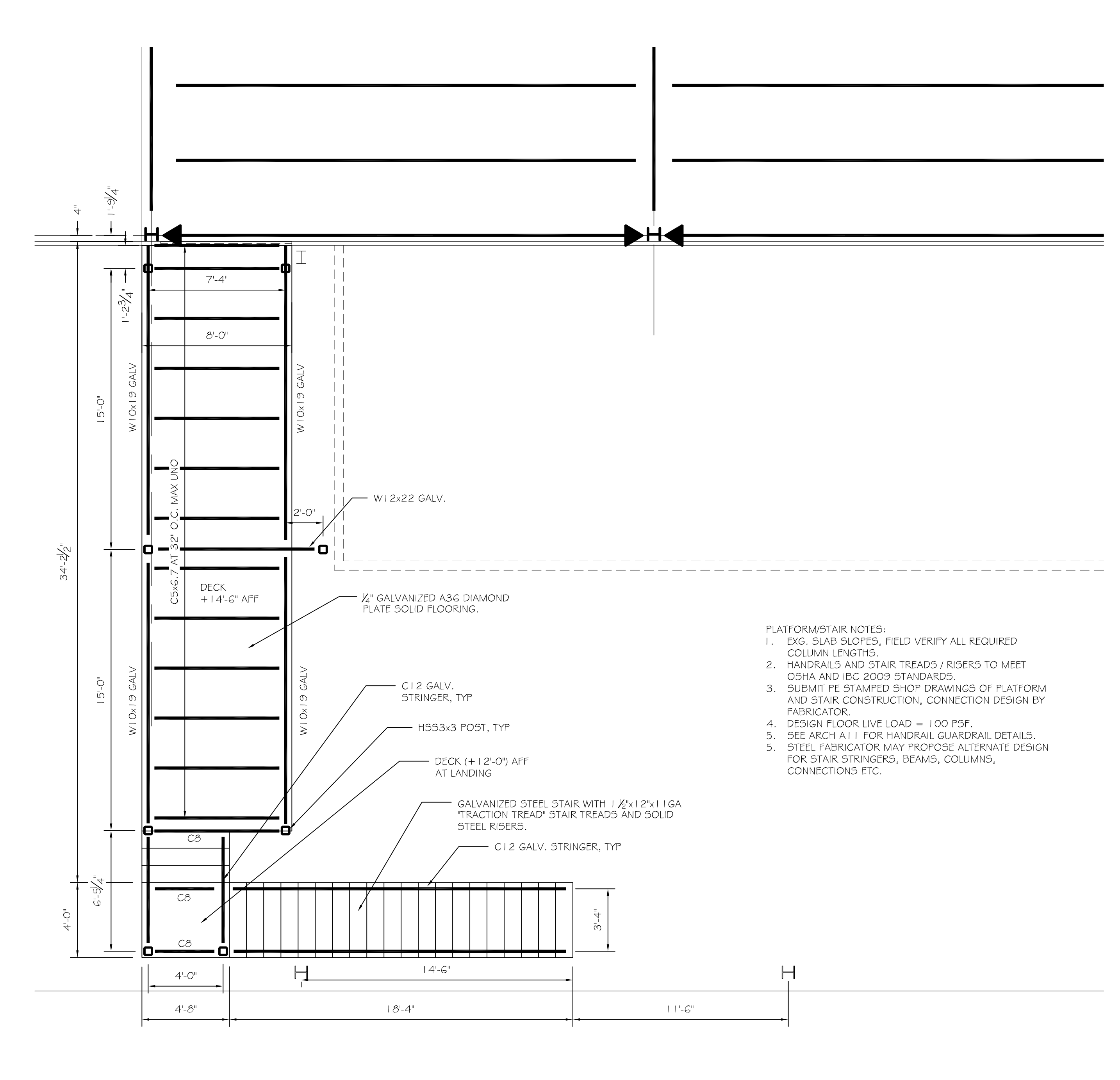


- FRAMING NOTES:
- INDICATES SPAN DIRECTION OF 1/2" - 20GA VLI COMPOSITE FLOOR DECK FOR 5" CONCRETE SLAB (TOTAL SLAB DEPTH = 5"). HILTI X-ENF-19 PINS IN 3/4" PATTERN, (3) #10 TEK SIDELAP SCREW PER SPAN. SLAB REINFORCING TO BE 6X6 W1.4W1.4 WWF. FINISHED TOP OF SLAB (+14'-6" VIF - MATCH EXISTING). PRIME AND PAINT UNDERSIDE OF DECK.
 - MEZZ TOS (+14'-1") INDICATES TOP OF BEARING STEEL REFERENCED FROM FIN. FIRST FLOOR ELEVATION 0'-0" = (63.5'). TOP OF BEARING STEEL DESIGNATED AT COLUMN CENTERLINE TYPICAL UNLESS NOTED OTHERWISE (UNO). CONTRACTOR VERIFY T/SLAB AT EXISTING MEZZANINE - T/SLAB AT NEW MEZZANINE IS TO MATCH EXISTING. NOTIFY ENGINEER AND ADJUST TOP OF MEZZANINE STEEL IF NECESSARY.
 - EDGE OF DECK TO BE EXTERIOR EDGE OF PERIMETER BEAM FLANGE, TYP UNO.
 - INDICATES BEAM TO COLUMN MOMENT CONNECTION, SEE DET. B4/S4.
 - "UNO" INDICATES "UNLESS NOTED OTHERWISE"
 - ALL WOOD IN CONTACT WITH CONCRETE TO BE PRESSURE TREATED.
 - ALL FASTENERS IN PT LUMBER TO BE HOT DIPPED G90 GALVANIZED.
 - ALL STRUCTURAL STEEL TO BE PRIMED (GREY) AND PREPPED FOR PAINT. SEE SPECS FOR PAINTING REQUIREMENTS.



B3 CORNER REINFORCING IN FOOTING AND WALL
SCALE: 1" = 1'-0"

A4 SLAB AT EXTERIOR DOORS
SCALE: NO SCALE

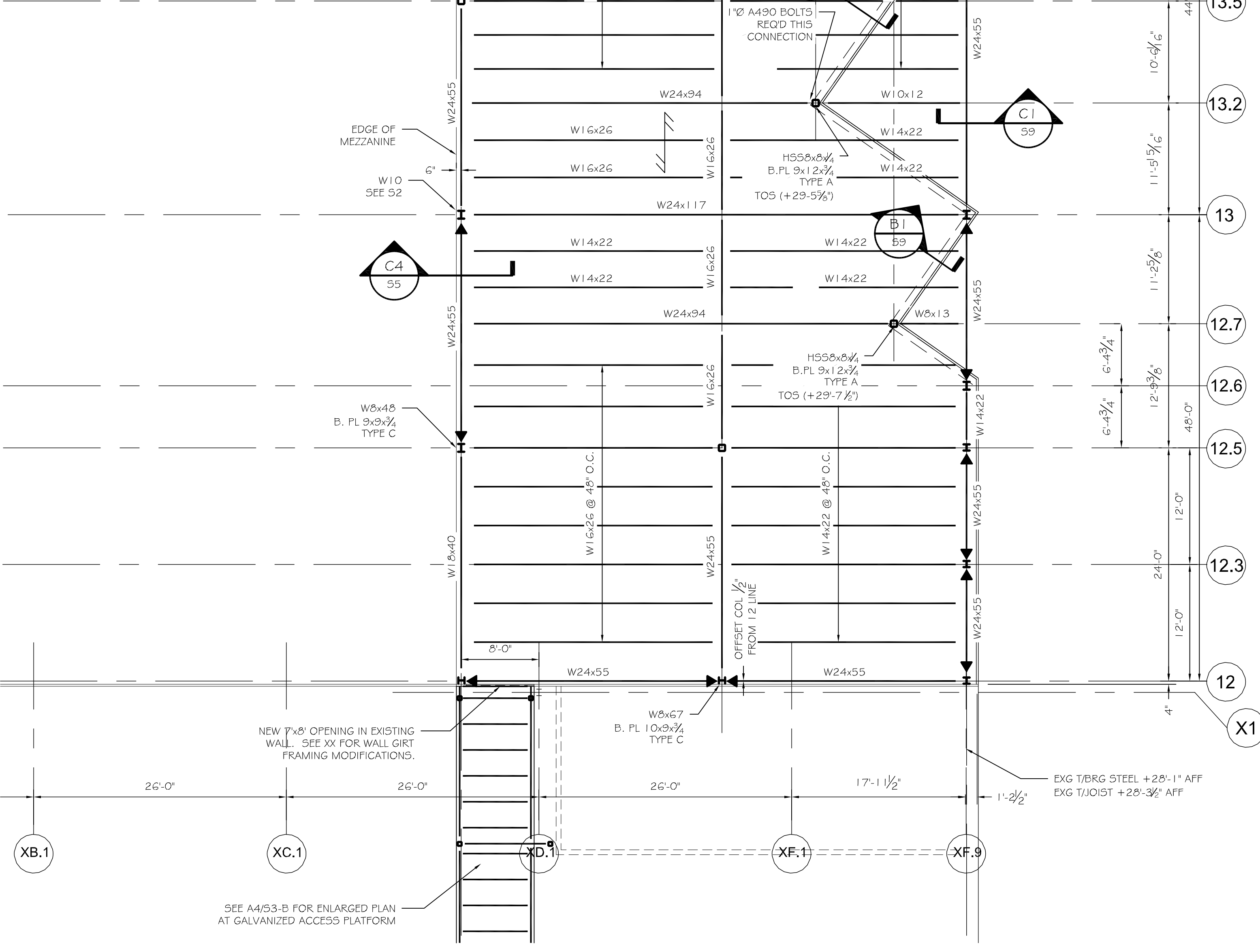


A4 GALVANIZED ACCESS PLATFORM
SCALE: 1/4" = 1'-0"

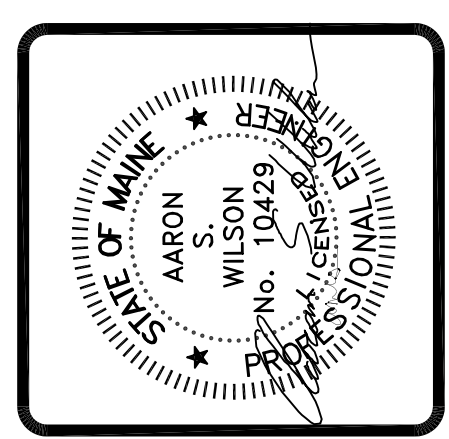
W-BEAM CONNECTION SCHEDULE

W-BEAM	3/4" A325N BOLTS	LENGTH OF 1/2" PL	ALLOWABLE REACTION w/1/2" FILLET-WELD
W24	n=7	L=21	P=56.4k
W21	n=6	L=18	P=46.3k
W18	n=5	L=15	P=36.3k
W16	n=4	L=12	P=26.1k
W14, W12	n=3	L=9	P=16.3k
W10, W8	n=2	L=6	P=8.2k

SINGLE PL SHEAR CONN. IN ACCORDANCE W/ AISC 9th ED, TABLE X



A2 MEZZANINE FRAMING PLAN
SCALE: 1/8" = 1'-0"



ASSOCIATED DESIGN PARTNERS INC.
Office: (207) 878-1751
80 Leighton Road Falmouth, Maine 04105
Fax: (207) 878-1788
E-Mail: adp@adpengineering.com

THIS DRAWING, DESIGN AND ELECTRONIC FILE ARE THE PROPERTY OF ASSOCIATED DESIGN PARTNERS, INC. THE REPRODUCTION, COPYING OR ANY OTHER USE OF THIS DOCUMENT WITHOUT WRITTEN CONSENT IS PROHIBITED.

PROJECT: **ALLAGASH 2015 EXPANSION**
100 INDUSTRIAL WAY, PORTLAND, MAINE
FOR: ALLAGASH BREWING CO.
SHEET TITLE: **MEZZANINE FRAMING PLAN**
ISSUED FOR PERMITTING

REVISIONS	DESCRIPTION	DATE
No.	BY	

DATE: 7/25/14
SCALE: AS NOTED
DESIGN BY: ASW
DRAWN BY: RSC
FILE #: 12160-S1
PROJECT NUMBER:
12160
SHEET NO:
63